



# ChargePoint Home Installation Training

## Site Readiness

Verify Equipment

Assemble Station

Station Activation

Validate Installation

## Lesson Plan:

- + Review the key steps to inspect the site and confirm site readiness for ChargePoint Home station installation

# Site Survey, Planning and Preparation

Site Survey	• WiFi coverage validation	
	• Identify location	
	• Mounting and Model Selection	
Site Plan	• Document station model and location to be installed	
	• Document electrical and construction work to be performed	
Site Preparation	• Electrical Work (Plug Version) – panel, breakers, wire pulls, outlet, station install (optional)	
	• Electrical Work (Hardwired) – panels, breakers, wire pulls, station install	

# Site Survey

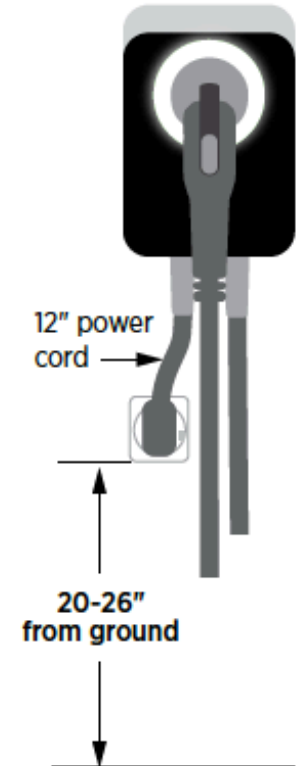
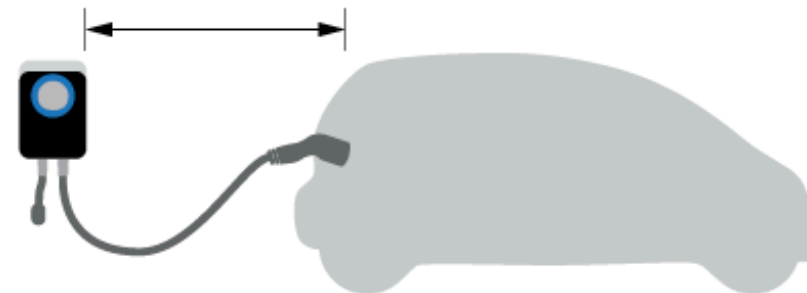
- + Every installation requires a site survey to be completed
- + Information gathered from the site survey is used to determine best location for installation.
- + Determines if a WiFi extender is needed at the site.

The NEMA outlet should be located **20-26"** from the ground.

The power cord is only 12" long (as per National Electric Code (NEC) for EV chargers) so make sure the installation location of the station is close enough for the cord to reach down and plug into the NEMA outlet (the cord will not bend to allow for the station to be installed next to it). Refer to the **Installation Template** included with the station.

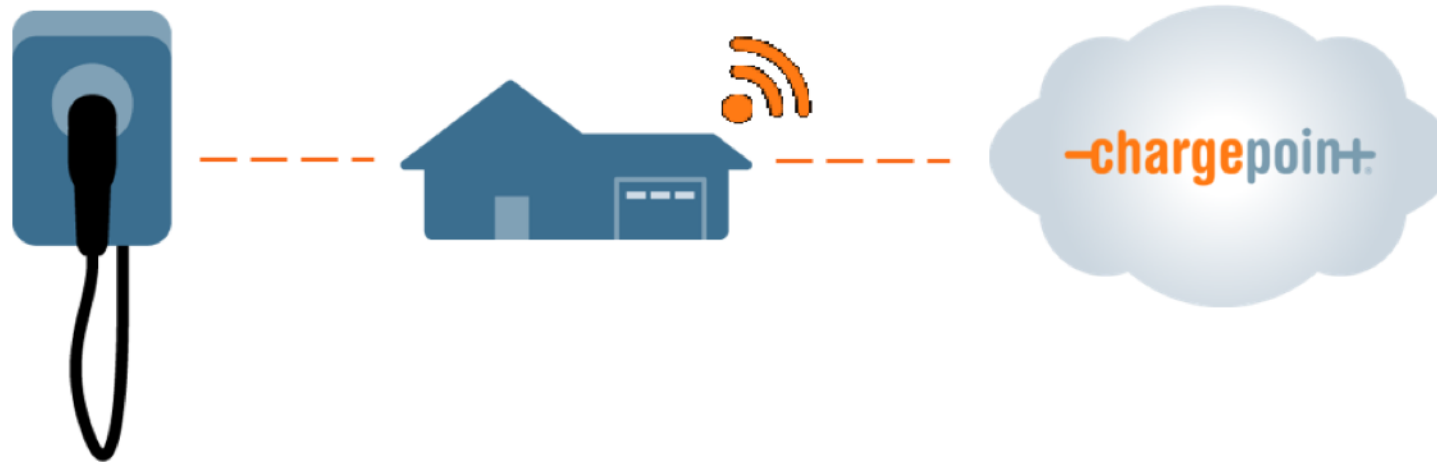
Make sure the homeowner has chosen an installation location that allows the length of charging cable to reach their car while still providing some slack.

*Charging cable reaches car without any tautness*



# When should a WiFi Survey be performed?

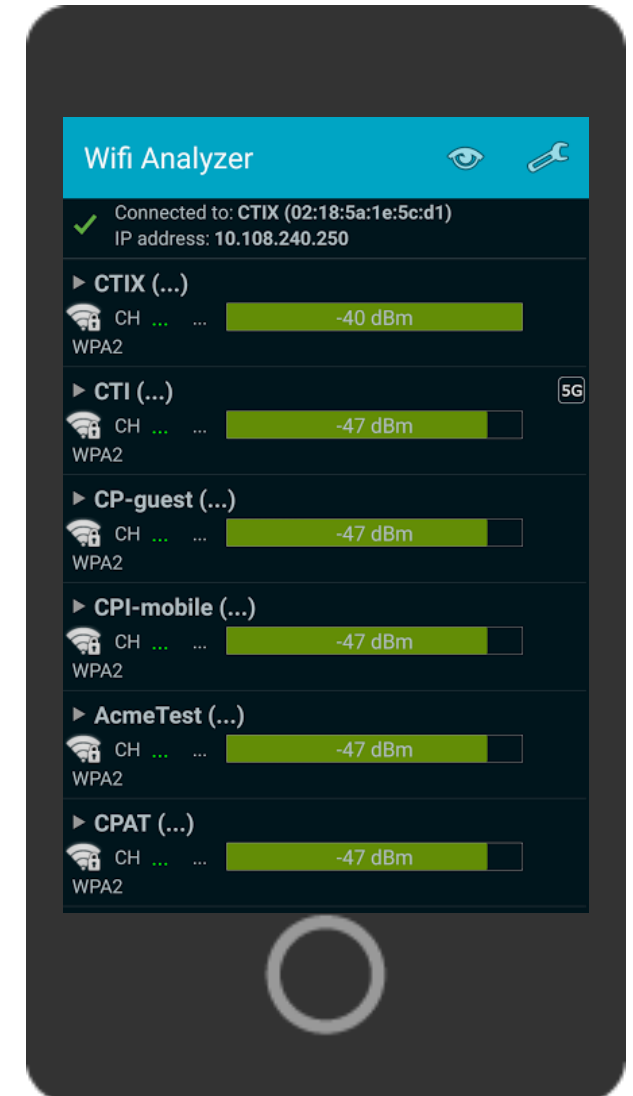
- + WiFi Surveys are not optional!
- + Performed prior to installation after preferred location has been chosen



- + Remedial work or corrective action may be required if WiFi survey is not conducted as recommended by ChargePoint
- + The installer is responsible for any remedial work resulting from WiFi survey not performed as recommended

# How to verify WiFi coverage

- + To check WiFi coverage in the installation location, download App from iTunes or Play Store that measures dBm strength (i.e. Wifi Analyzer).
- + Locate Network name
- + Ideal signal strength: -85 dBm or higher
- + If signal strength is -85 dBm or lower, a WiFi Extender is recommended.



# Recommended WiFi Extenders



NETGEAR  
N300



NETGEAR  
AC750



TP-LINK  
RE200

+ All routers are 802.11bgn and AC compatible

# Site Plan

+ Varies from location to location but always will include:



	Site Plan
1.	Determine optimal location of charging station installation
2.	Service and Panel upgrades based on existing infrastructure
3.	Breaker layout, wire sizing, and run plan



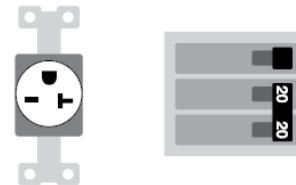
# Site Preparation for Installation

- + Must be completed before actual station installation
- + The installation site must be prepared:
  - Conduit runs
  - Service upgrades
  - Panel upgrades
  - Power wire pulls
  - Outlet install
- + All work must meet local and national codes

## ChargePoint Home 12: 16A Station

Panel needs **240V 20A** service.

NEMA 6-20 outlet installed ground facing up.



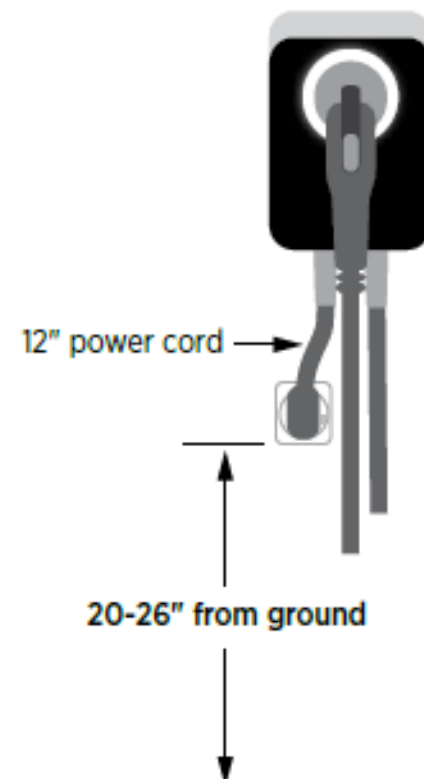
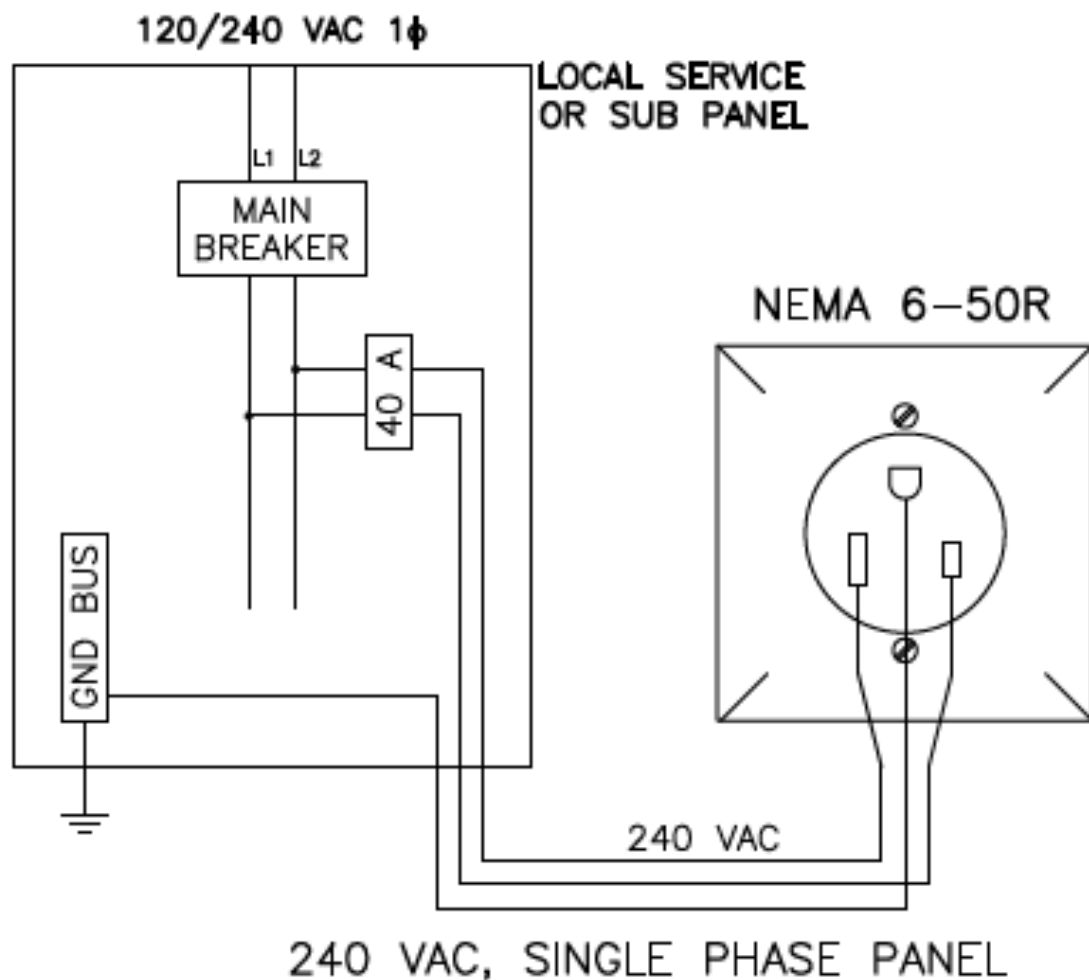
## ChargePoint Home 25: 32A Station

Panel needs **240V 40A** service.

NEMA 6-50 outlet installed ground facing up.

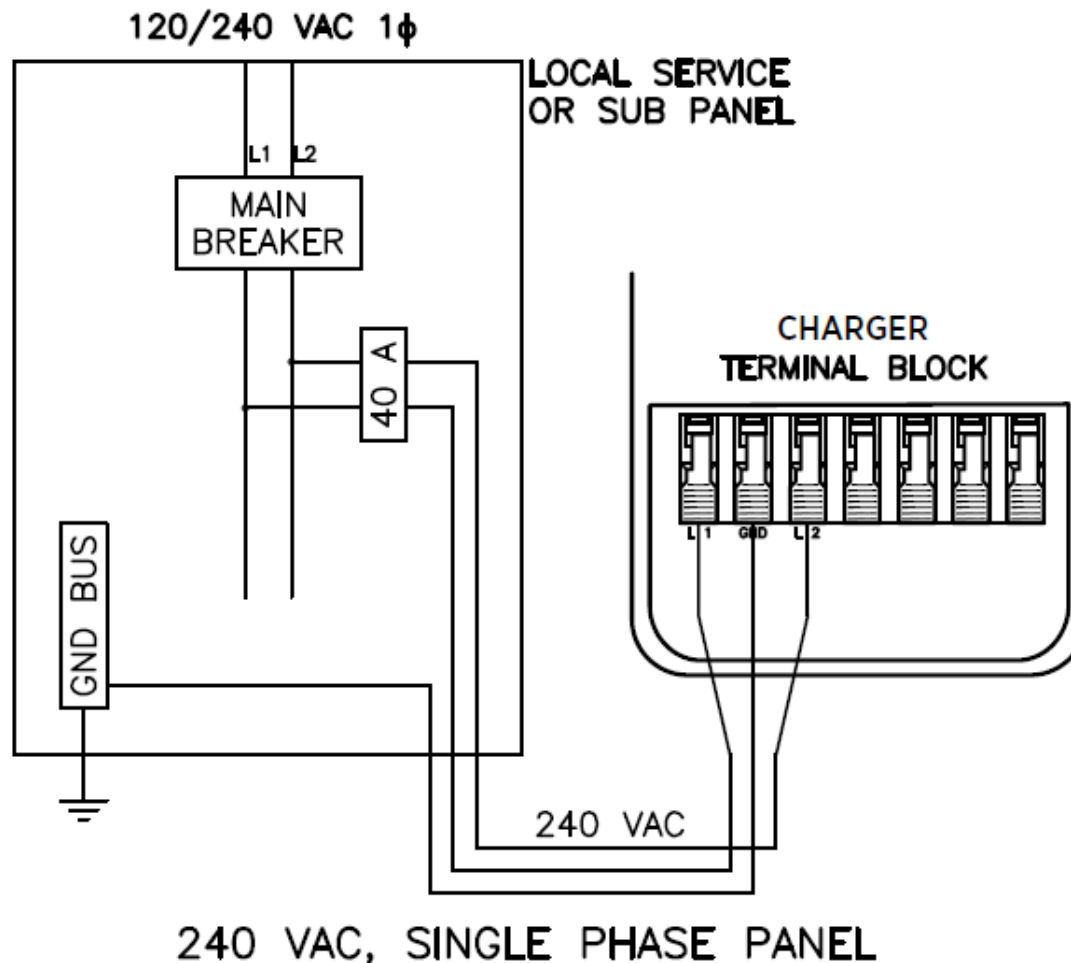


# Station Wiring – Plug Version



- ❑ Neutral is not required at the outlet
- ❑ Install outlet with ground facing up

# Station Wiring – Hard Wired Version



- Use ¾" conduit
- Use appropriate fittings for connection
- Strip wire ends to ½"
- Insert wires fully into charger terminal block

Site Readiness

**Verify Equipment**

Assemble Station

Station Activation

Validate Installation

### **Lesson Plan:**

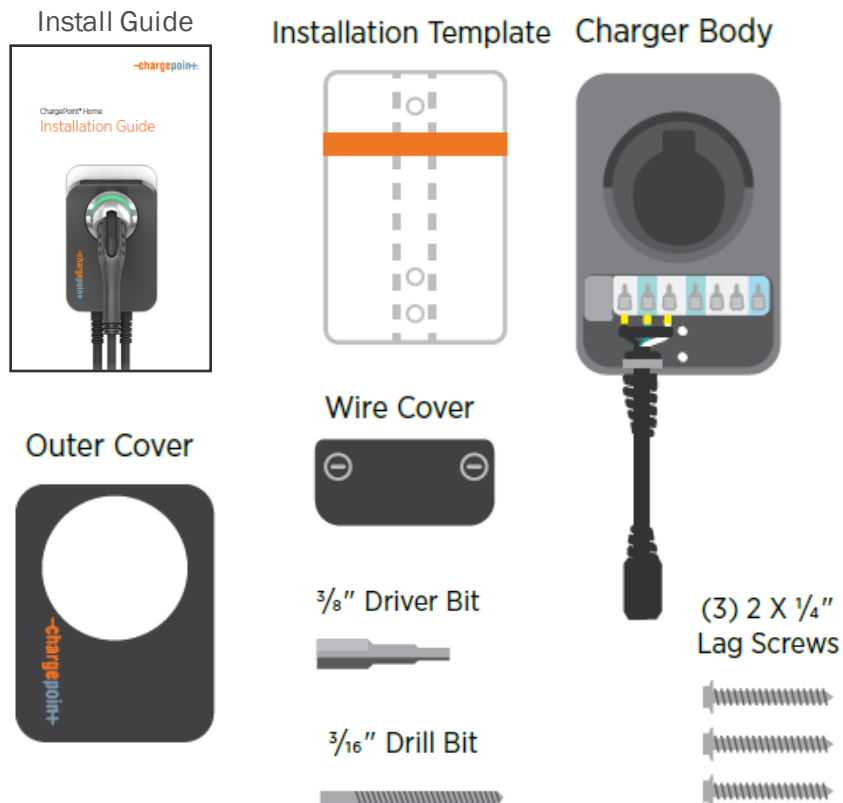
- + Review the content of each box and other items needed for installation.

# What's in the box

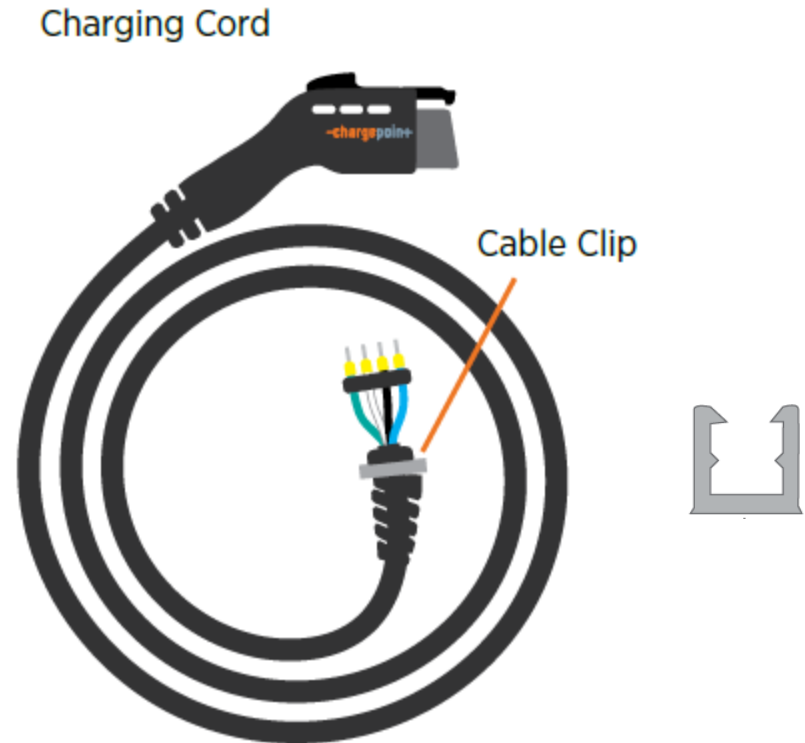


- + Product will ship with 2 boxes (Charging Station and Cable box)
- + Note: Input cable will not be included for Hard Wired stations

## Charging Station Box:



## Charging Cord Box:



# Other items you will need

For Plug version:  
NEMA 6-20 or 6-50  
240V outlet, installed  
ground facing up



Tape



Stud Finder



Level



Drill



ChargePoint  
Mobile App



Pencil



Coin



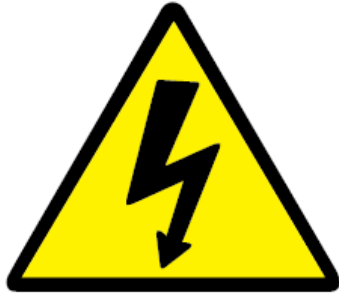
# Requirements to activate the Home Station

- + WiFi and Bluetooth
- + iOS or Android Phone
- + ChargePoint mobile app (free)
- + ChargePoint Account (free)

ChargePoint  
Mobile App



# Safety



## **DANGER: RISK OF SHOCK**

**Turn off circuit breaker to 240V outlet.** Do not restore power to the outlet until installation is complete. Failure to follow these instructions could result in shock or electrocution.

---



Site Readiness

Verify Equipment

**Assemble Station**

Station Activation

Validate Installation

## Lesson Plan:

- + Watch video on how to install ChargePoint Home station

# Video – CP Home Installation

ChargePoint Home Installation Video

Site Readiness

Verify Equipment

Assemble Station

**Station Activation**

Validate Installation

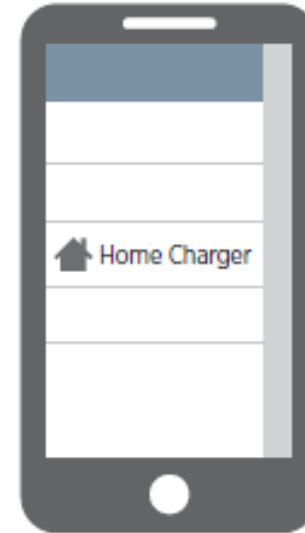
## Lesson Plan:

- + Learn why it is important activate the ChargePoint Home station
- + Review the key steps to activating the station using your smart phone

# After Installation Overview

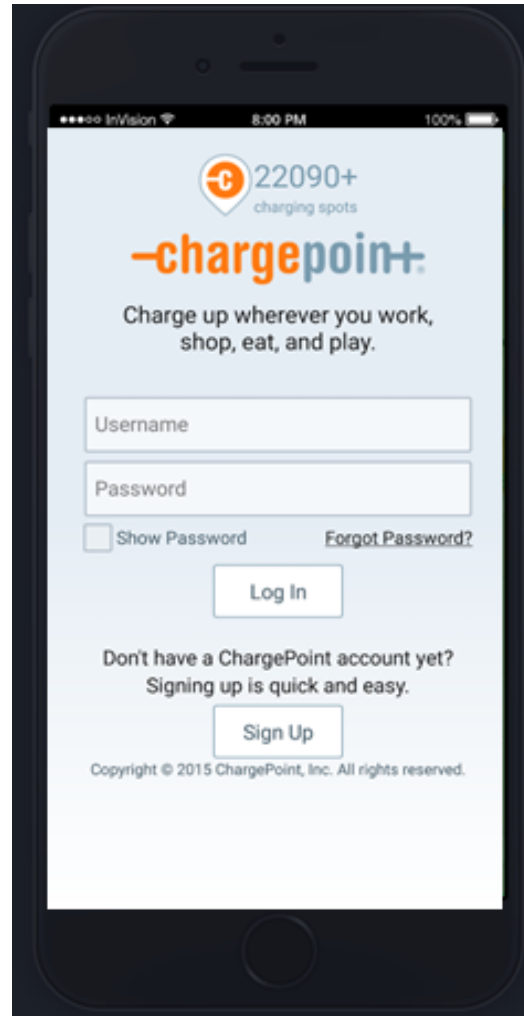
## Activate your station

- + Turn on Bluetooth and WiFi
- + Open the ChargePoint app. On the main menu, click **Home Charger**
- + Select “Set Up Home Charger”
- + Select “Activate” and follow the instructions



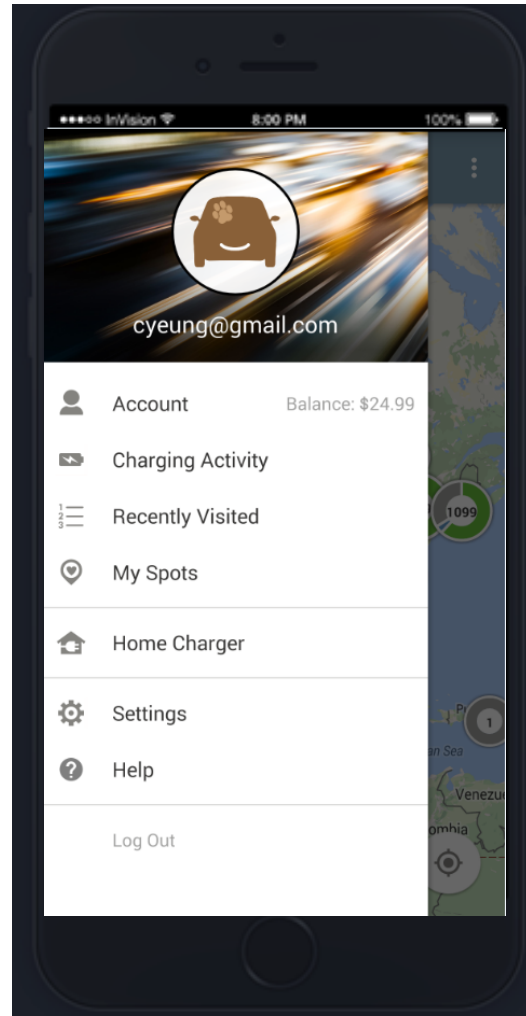
Activation of Home will allow you to schedule charging, start sessions remotely and set reminders so you never forget to charge. You'll be able to view and track all your residential, public and workplace charging in one place including energy usage and how many miles you've added during a charging session depending on your car. Plus, Home works with Nest to help you save on energy costs.

# Home Station Activation – Mobile App



1. Sign in to ChargePoint Account on Mobile App

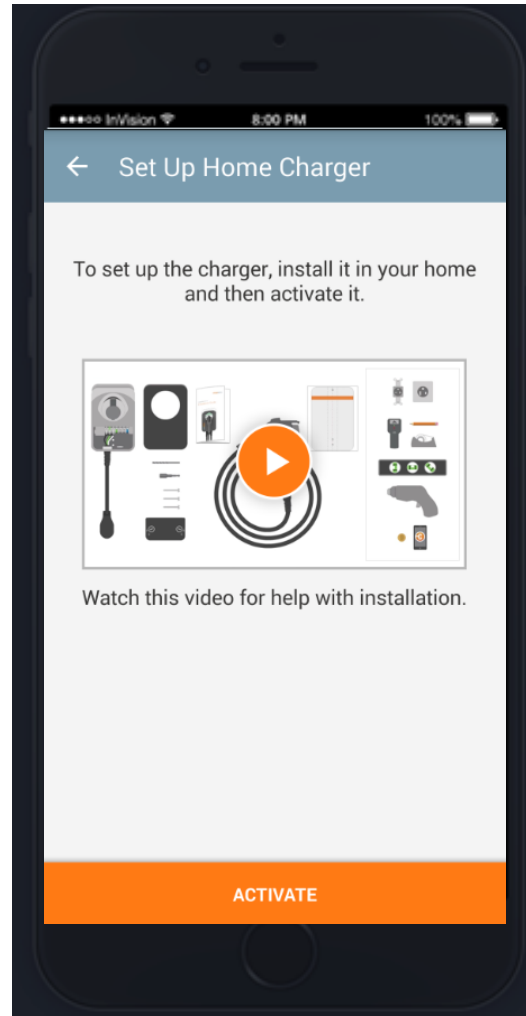
# Home Station Activation – Select Home Charger



1. Sign in to ChargePoint Account

2. Select Home Charger

# Home Station Activation - Activate

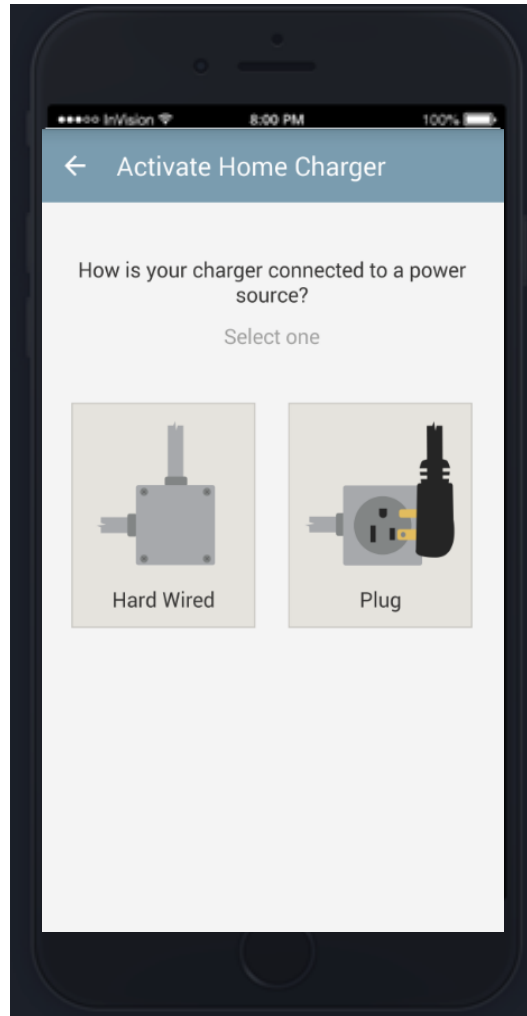


1. Sign in to ChargePoint Account

2. Select Home Charger

3. Click Activate

# Home Station Activation – Select Power Source



1. Sign in to ChargePoint Account

2. Select Home Charger

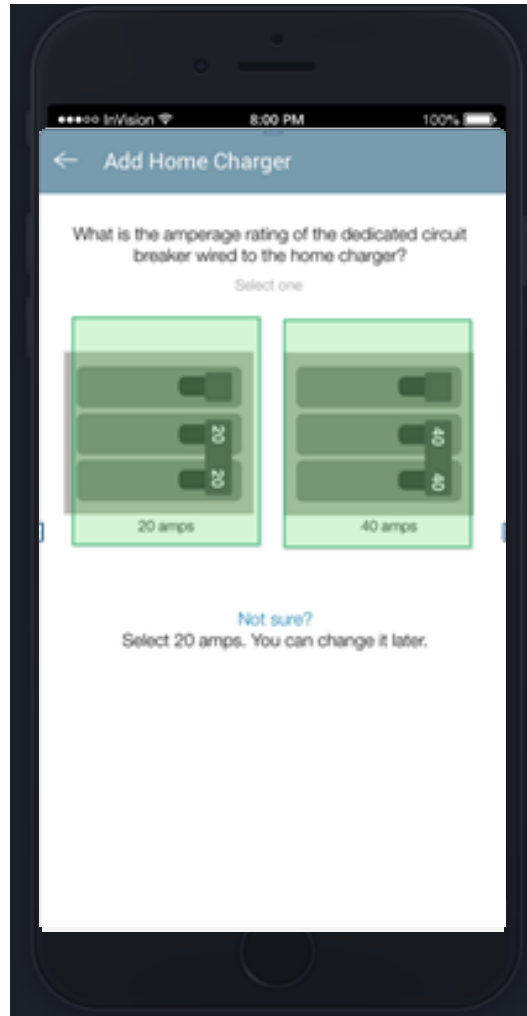
3. Click Activate

4. Select the power source: Hard wired or Plug

**It is important to be accurate for this step. Choosing the wrong value might impact the power output of the station.**



# Home Station Activation – Select Amperage



1. Sign in to ChargePoint Account

2. Select Home Charger

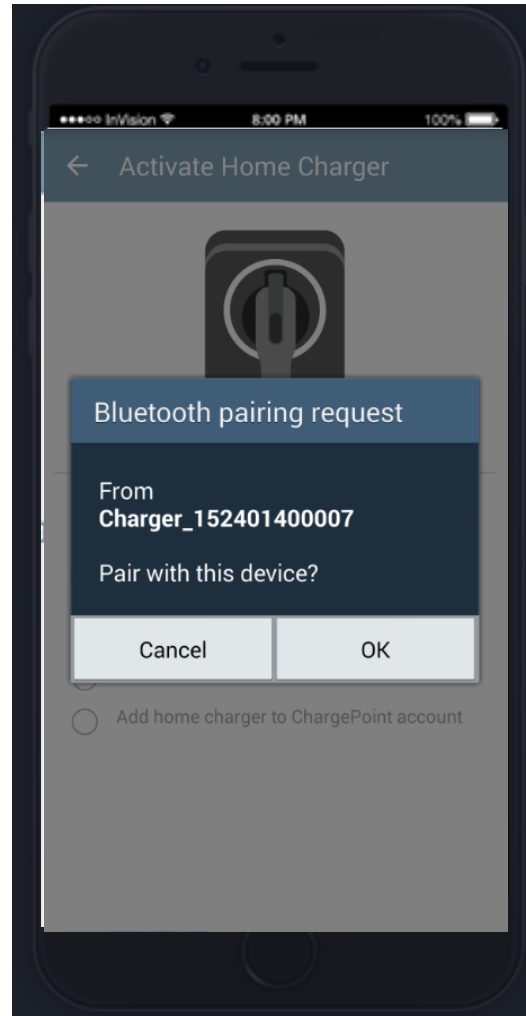
3. Click Activate

4. Select the power source: Hard wired or Plug

5. Select Amperage rating of the dedicated circuit (if Hard Wired)

**It is important to be accurate for this step. Choosing the wrong value might impact the power output of the station.**

# Home Station Activation – BT pairing



1. Sign in to ChargePoint Account

2. Select Home Charger

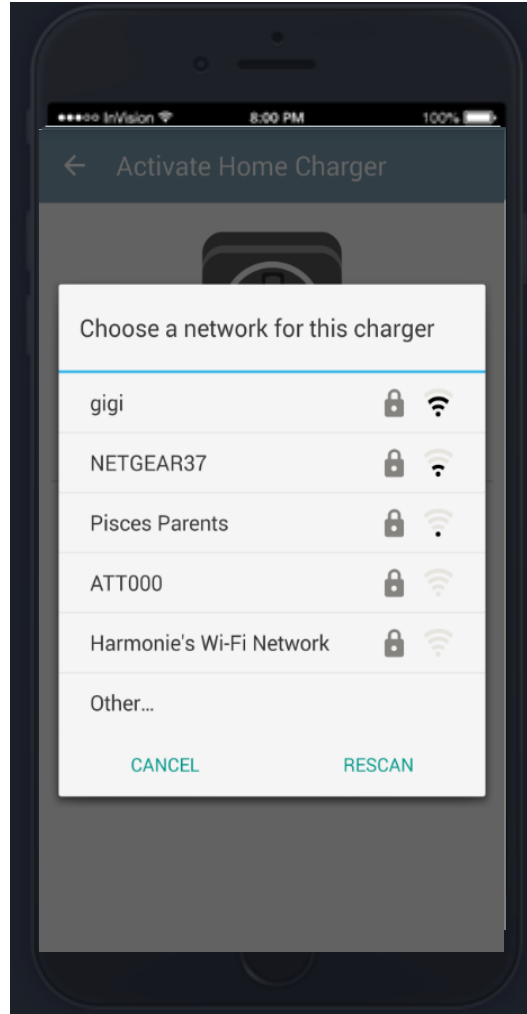
3. Click Activate

4. Select the power source: Hard wired or Plug

5. Select Amperage rating of the dedicated circuit (if Hard Wired)

6. Confirm Bluetooth pairing request

# Home Station Activation – Choose Network



1. Sign in to ChargePoint Account

2. Select Home Charger

3. Click Activate

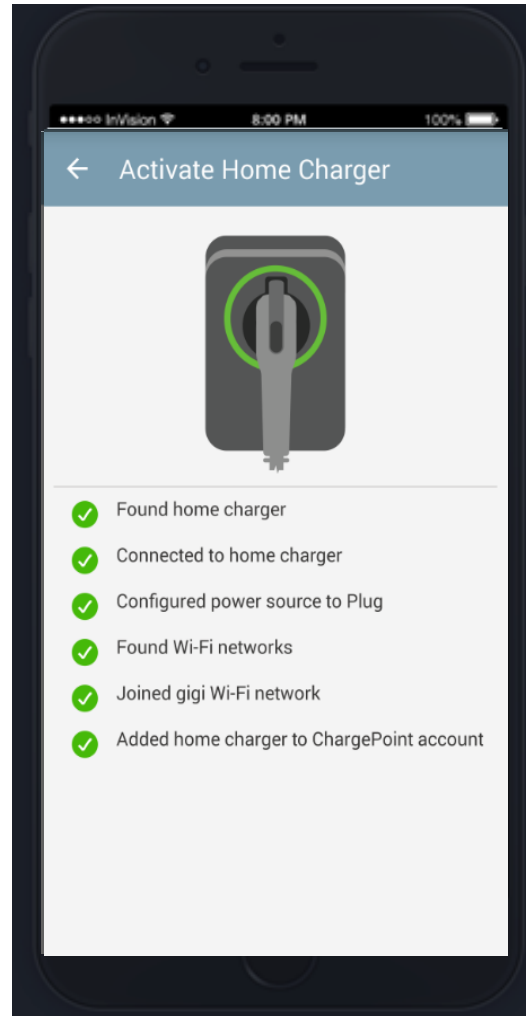
4. Select the power source: Hard wired or Plug

5. Select Amperage rating of the dedicated circuit (if Hard Wired)

6. Confirm Bluetooth pairing request

7. Choosing a Network for the charger and enter password

# Home Station Activation - Confirmation



1. Sign in to ChargePoint Account

2. Select Home Charger

3. Click Activate

4. Select the power source: Hard wired or Plug

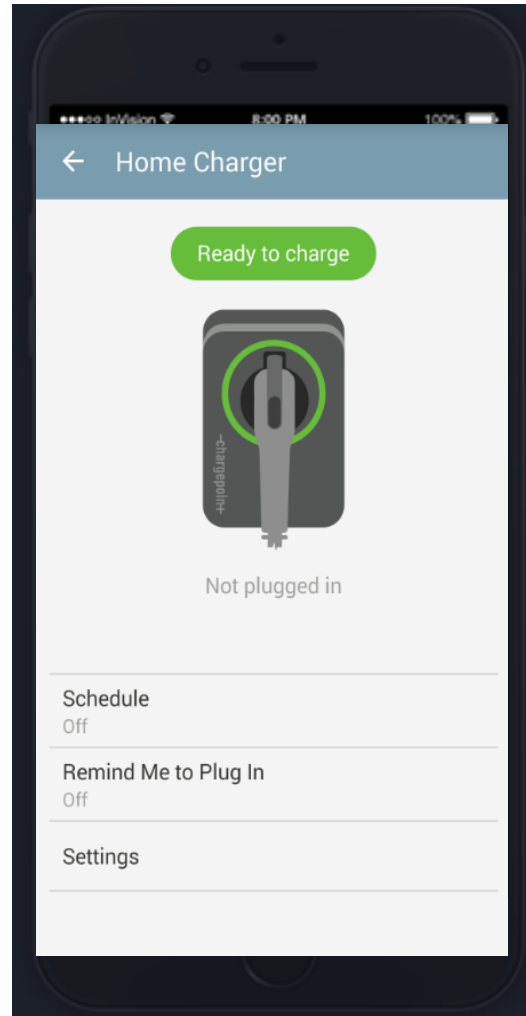
5. Select Amperage rating of the dedicated circuit (if Hard Wired)

6. Confirm Bluetooth pairing request

7. Choosing a Network for the charger and enter password

8. Station activation status screen will confirm successful completion of each step

# Home Station Activation - Completion



1. Sign in to ChargePoint Account

2. Select Home Charger

3. Click Activate

4. Select the power source: Hard wired or Plug

5. Select Amperage rating of the dedicated circuit (if Hard Wired)

6. Confirm Bluetooth pairing request

7. Choosing a Network for the charger and enter password

8. Station activation status screen will confirm successful completion of each step

9. Activation Completed

Site Readiness

Verify Equipment

Assemble Station

Station Activation

**Validate Installation**

## Lesson Plan:

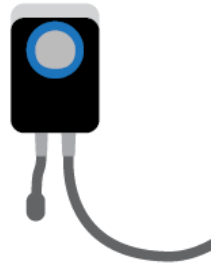
- + Review the key steps to validate the installation
  - Verifying station operation
  - Completing Installation Checklist
  - Basic Troubleshooting
  - Contacting ChargePoint Support

# Verify Station Operation

ChargePoint® Home

## Status Key

### Not Connected to Internet



Ready to charge



White

Charging



Pulsing blue

Fault



Red

### Connected to Internet

Ready to charge



Green

Schedule set



Blinking green

Plugged in



Blue

Charging



Pulsing blue

Fault

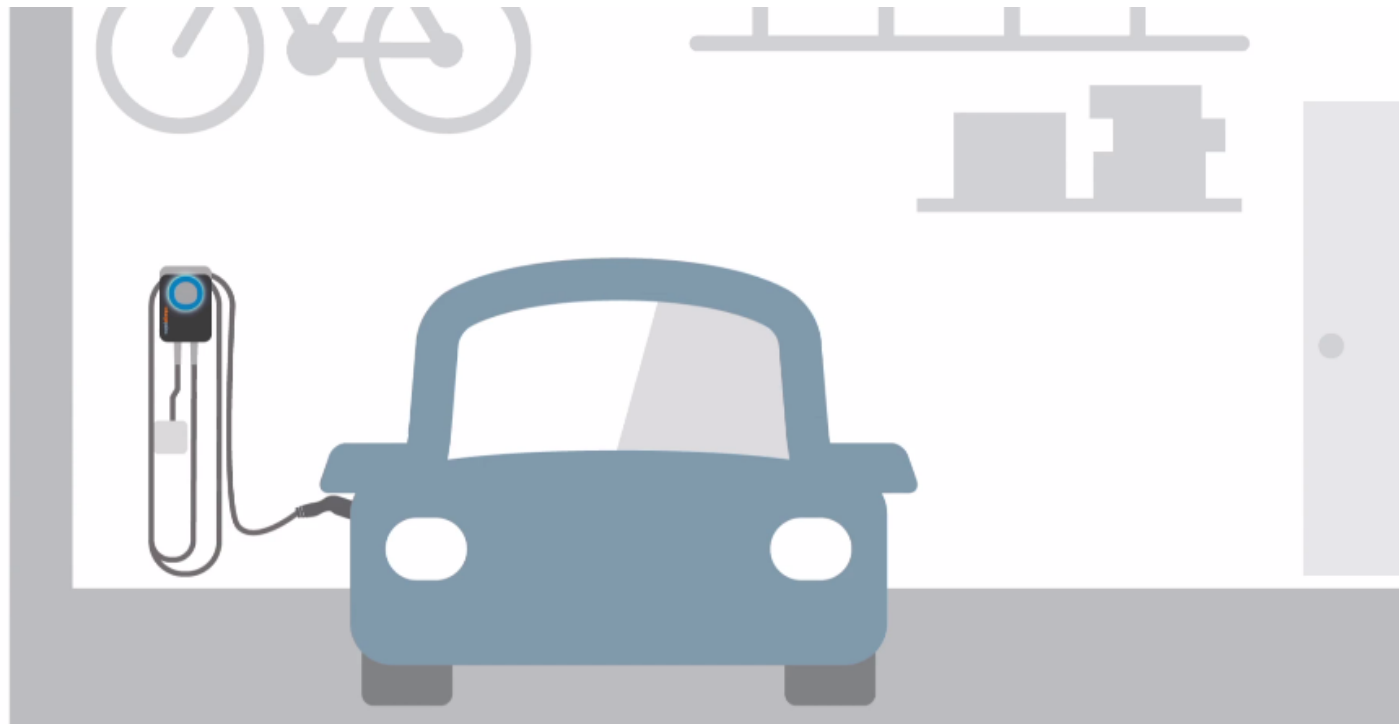


Red



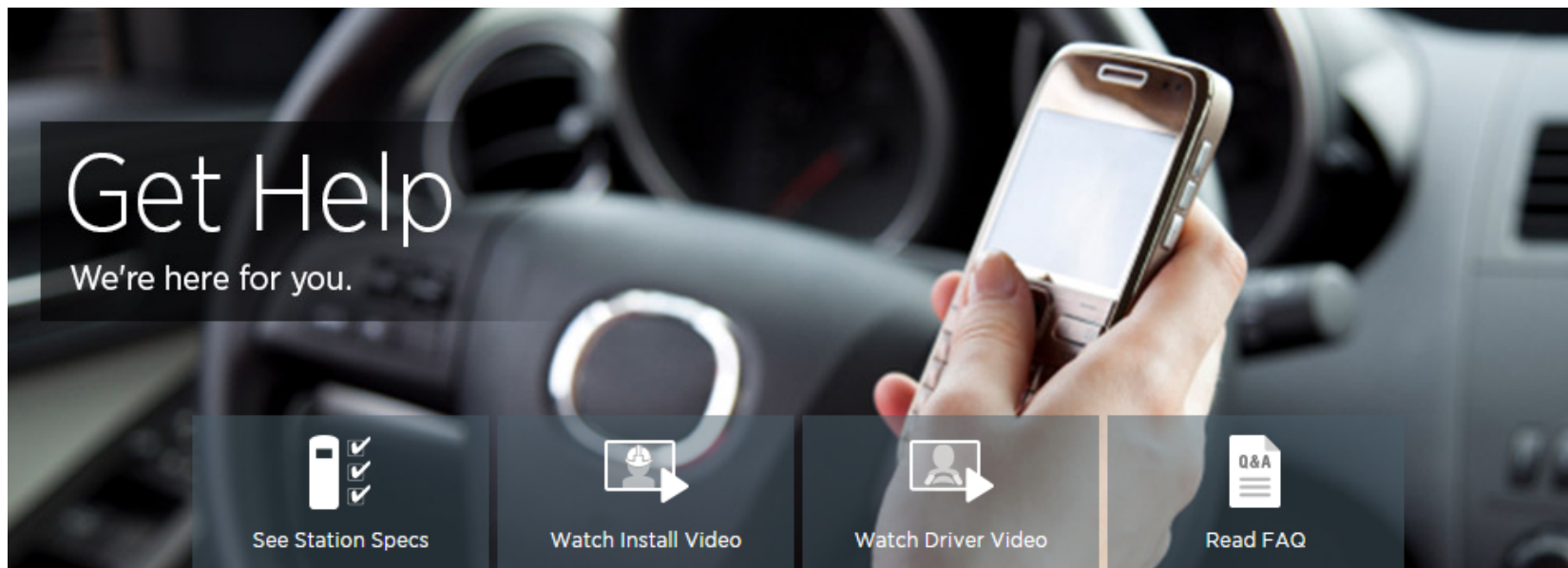
# Clean Up

- + Before leaving the site ensure that the station is ready for use by drivers and follow the principle of “No Trace Left Behind”
  - Boxes and packaging material
  - Wire clippings
  - Dust-off station, cables, and connectors





# Questions?



ChargePoint Support at 1-888-758-4389



[support@chargepoint.com](mailto:support@chargepoint.com)



**Thank you !**