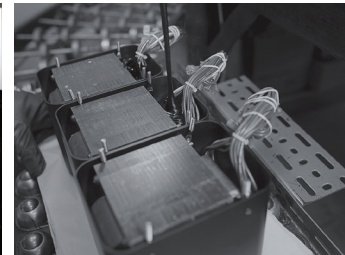


MC1.2kW power amplifier

- McIntosh's MC1.2kW amplifier combines staggering power with finesse and musicality.
- Quad Balancing, a feature unique to McIntosh, brings noise and distortion levels down to the point of virtual non-existence. Now you can enjoy the full dynamic color of your most demanding music, painted on a background of silence.
- A giant hand-built Watt meter, glowing behind the 1/2-inch glass panel, provides more than the iconic McIntosh aesthetic. It allows you to accurately monitor the output power of the amplifier and stay within your speaker's power limits.
- McIntosh's patented Power Guard circuit stands guard to prevent speaker-damaging amplifier "clipping" during unexpectedly high musical peaks.
- With the MC1.2kW, you always get all the power you paid for. The exclusive Output Autoformer allows the amplifier to deliver 1200 Watts of power into any speaker, regardless of whether it is 2, 4, or 8-Ohm impedance.
- In true McIntosh fashion, the MC1.2kW will provide high-performance, trouble-free musical enjoyment that can be passed down to the next generation.



Delivering powerful, dynamic music.

McIntosh[®]

LEGENDARY PERFORMANCE™

www.mcintoshlabs.com

MC1.2kW power amplifier

General Specifications

Power Output:

1200 watts into an 8, 4 or 2 ohm load is the minimum sine wave continuous average power output

Output Load Impedance:

Terminals for 8, 4 and 2 ohms

Rated Power Band:

20Hz to 20kHz

Total Harmonic Distortion:

0.005% maximum harmonic distortion at any power level from 250 milliwatts to rated power output

Dynamic Headroom:

2dB

Frequency Response:

+0, -0.25dB from 20Hz to 20kHz
+0, -3.0dB from 10Hz to 100kHz

Input Sensitivity (For rated output):

2.5V Unbalanced
5V Balanced

Signal-To-Noise Ratio (A-Weighted):

120 below rated output, Unbalanced
124dB below rated output, Balanced

Intermodulation Distortion:

0.005% maximum if instantaneous peak power output does not exceed twice the rated output, for any combination of frequencies from 20Hz to 20kHz

Wide Band Damping Factor:

Greater than 40

Input Impedance:

10,000 ohms

Power Guard:

Less than 2% THD
with 14dB overdrive at 1,000Hz

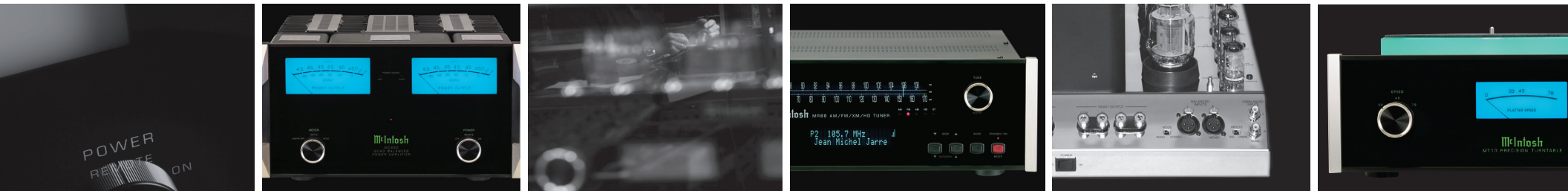
Power Requirements:

100 volts, 50/60Hz, 13 amps
110/120 volts, 50/60Hz, 12.5/12 amps
220 volts, 50/60Hz, 7.5 amps
230/240 volts, 50/60Hz, 6.5 amps



For the Consumer's Protection:

In order to ensure the highest level of customer satisfaction, "new" McIntosh products may only be purchased over-the-counter or delivered and installed by an Authorized McIntosh Dealer. McIntosh products that are purchased over the Internet, by phone or mail order are presumed to be "used" and do not qualify for any McIntosh Warranty. McIntosh does not warrant, in any way, products that are purchased from anyone who is not an Authorized Dealer or products that have had their serial number altered or defaced.



Companion Products

The McIntosh C500 Preamplifier, MCD1100 SACD/CD Player, MR88 AM/FM/XM/HD Tuner, MEN220 Room Correction System, MPC1500 Power Controller and the XRT1K Loudspeaker are logical companions to the MC1.2K Power Amplifier. Your Authorized Dealer can provide additional information.

To learn more, please call us at 1.800.538.6576.

McIntosh®

LEGENDARY PERFORMANCE™

www.mcintoshlabs.com