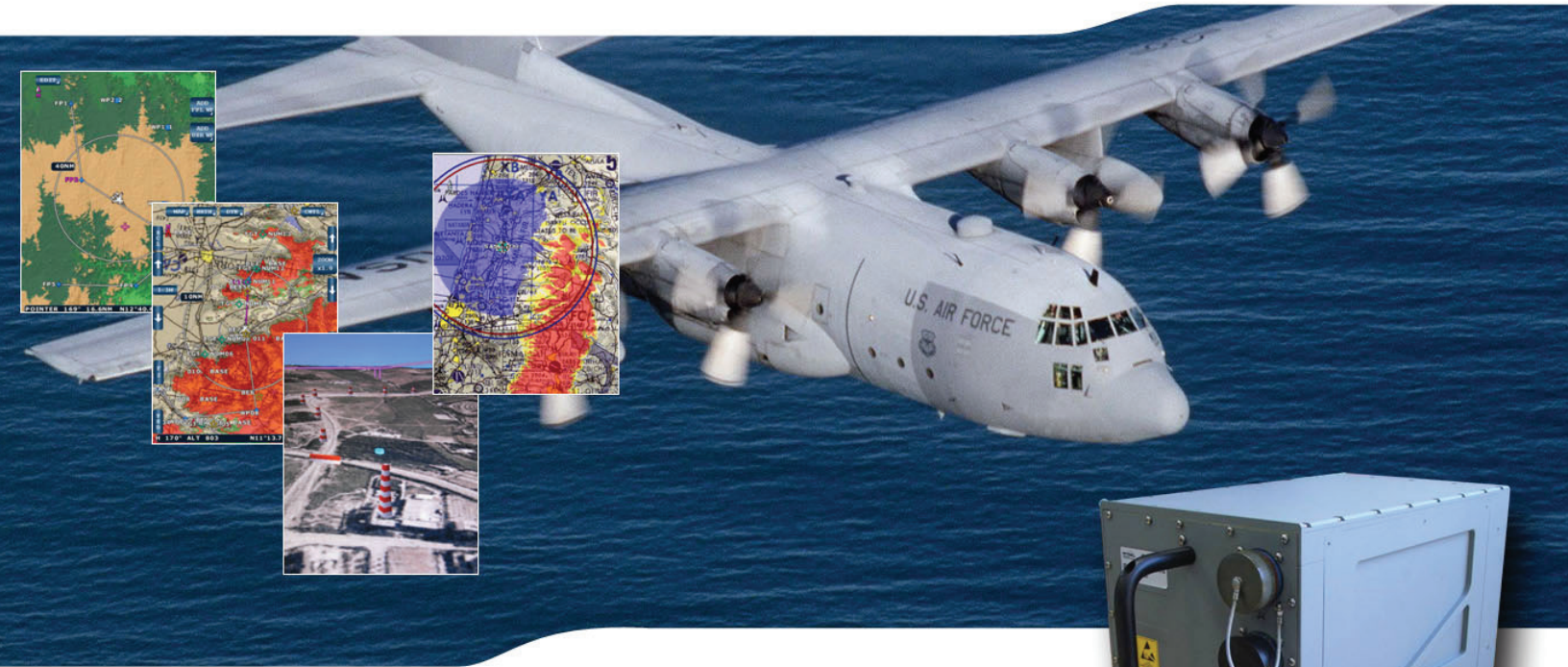


# GDMU

## Global Digital Mapping Unit



Elbit Systems of America's Global Digital Map Unit is built on a proven design that accommodates multiple data formats and provides unmatched situational awareness to aircrews. The GDMU displays detailed map, flight plan and threats information to the aircrew, performs interactive functions with the mission computers and generates digital video map for head down displays.

### More Features

- Flight certified and in production map engine that fully complies with and exceeds C-130J map performance on a single card
- 100% Form, Fit & Interface to existing C-130J mounting provisions and connectors
- Open architecture design for easy adaptability to other aircraft platforms
- Expansion capacity

# GDMU

## Global Digital Mapping Unit

### Technical Specifications

#### Digital Map Features

##### Display:

- One or two independent maps
- True color
- Anti-aliasing
- Real-time update in 30Hz
- 2D and 3D perspective view

##### Overlays:

- Aeronautical charts
- Sun Angle Shading
- Vertical profile
- Height Above Terrain
- Topographic
- Vector maps
- Aeronautical data
- Threat Intervisibility
- Navigational data
- Tactical data

##### Map Standards:

- CADRG
- ECHUM
- Jeppesen and DAFIF
- DTED, RDTED
- CIB
- VMAP0, VMAP1
- JPEG, BMP

#### GDMU Specifications

##### Electrical Characteristics:

- Input 115 VAC 400 Hz (MIL-STD-704A)
- Consumption: < 40 watts

##### Interfaces:

- MIL-STD 1553
- TAXI video
- SCSI-2 disk interfaces
- Ethernet

##### Dimensions:

- Height: 7.618" (200 mm)
- Width: 7.626" (165 mm)
- Depth: 12.658" (380 mm)

##### Weight:

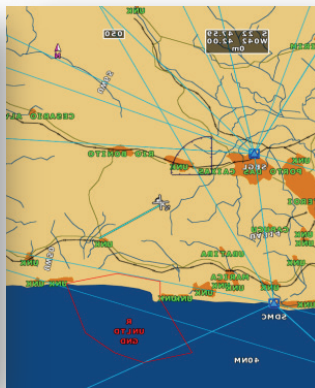
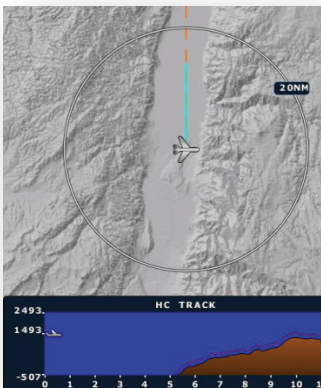
- Weight: 20.4 lbs

##### Environmental Conditions:

- Operation: -40°C to 71°C
- Storage: -55°C to 95°C
- Environment: MIL-STD 810-E
- EMI: MIL-STD-461C

##### Growth:

- Pre-wired circuit boards for growth
- Internal mass memory storage



**Elbit Systems of America, LLC**  
4700 Marine Creek Parkway, Fort Worth, Texas 76179 USA  
[www.elbitsystems-us.com](http://www.elbitsystems-us.com)