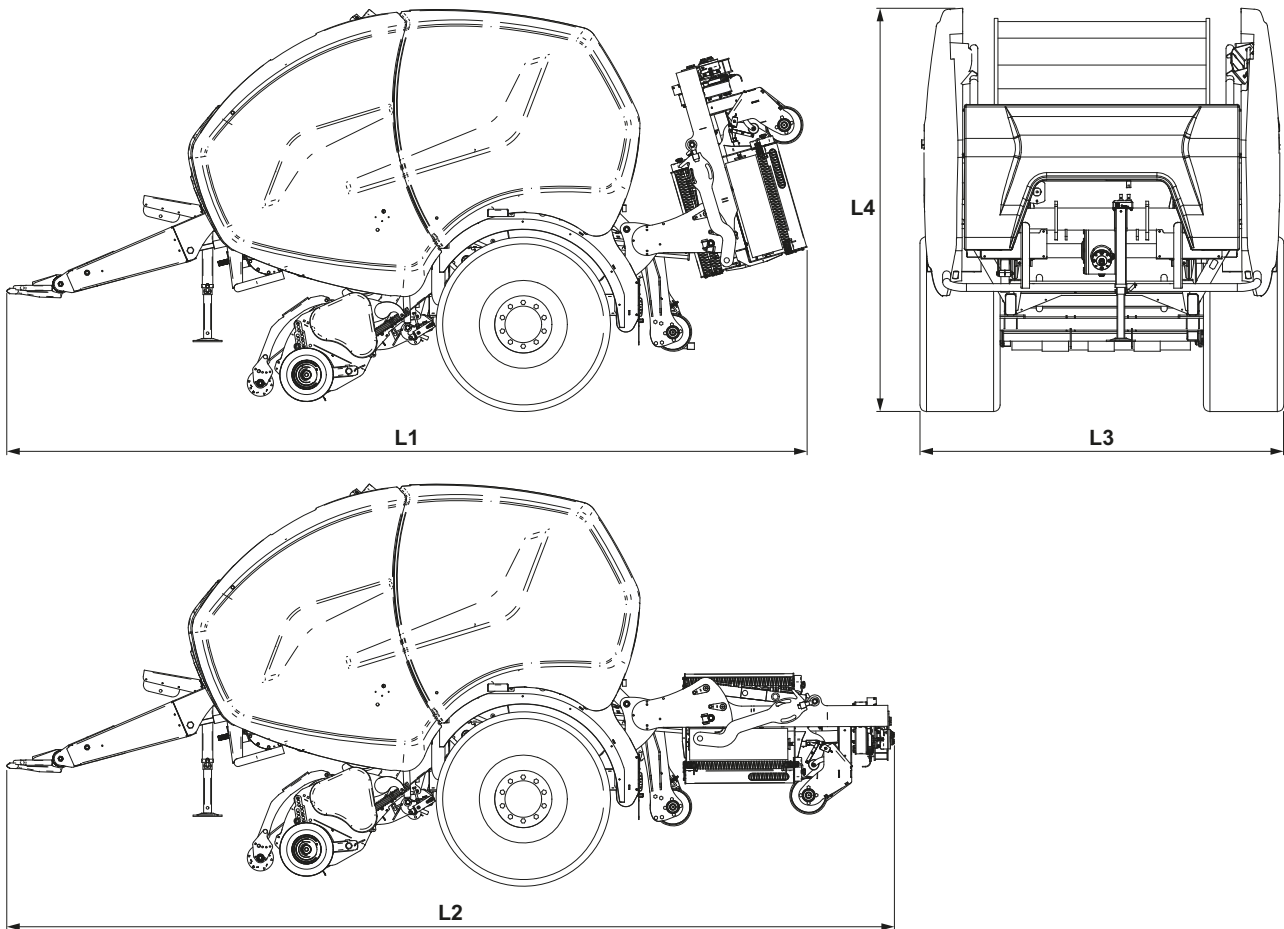


Machine technical data



Description	Unit of measure	Model	
		FastBale	FastBale Combi
Machine characteristics			
Total machine length during transport (L1)	mm (in)	4415 (174")	6120 (241")
Total machine length while in use (L2)	mm (in)	4415 (174")	6790 (267")
Total machine width (L3)	mm (in)		2760 (109")
Total machine width with optional tyres (L3)	mm (in)		3000 (118")
Total height of the machine (L4)	mm (in)		3100 (122")
Weight	kg (lb)	6650 (14660)	8000 (17637)
Maximum vertical stress on the eyelet	kg (lb)	See identification plate	

Technical data

Description	Unit of measure	Model	
		FastBale	FastBale Combi
Tyre characteristics			
Dimensions of the machine tyres			600/55 R26.5
Dimensions of the machine's tyres (optional)			710/50 R26.5
Inflation pressure	bar (psi)		3.5 (51)
Dimensions of pick-up wheel tyres			16x6,50-8 6 PR
Inflation pressure	bar (psi)		1.5 (22)
Tightening torque for machine wheel columns	Nm (lbs*ft)		310 (228)
Lubrication system			
Tank capacity	lt (pints)		4 (8.5)
Lubrication type			Automatic
Baling chamber characteristics			
Pre-chamber rollers	n.		14
Main chamber rollers	n.		17
Feeding unit			
Type			Rotor intake
Net binding unit			
Type			Electronic binding unit
Film binding unit			
Type			Electronic binding unit
Net reel characteristics			
Maximum diameter of the reel	mm (in)		320 (12.5")
Maximum width of the reel	mm (in)		1600 (63")
Net type	gr/m (lb/ft)		14-18 (0.010-0.013)
Film reel characteristics			
Maximum diameter of the reel	mm (in)		-
Maximum width of the reel	mm (in)		-
Type of film	m/kg (ft/lb)		-
Bale characteristics			
Diameter	mm (in)		1200 (47")
Width	mm (in)		1200 (47")

Technical data

Description	Unit of measure	Model	
		FastBale	FastBale Combi
Max volume	m ³ (cuft)	1.36 (48)	
Pick-up unit			
Type		"Extra-wide" pick-up	
Maximum pick-up width	mm (in)	2200 (87") 2070 (82") Norma DIN	
Tines bars	n.	5	
Pick-up tines (for each bar)	n.	32	
Distance between pick-up tines	mm (in)	60 (2" 3/8)	
Pawl-type torque limiter		-	
Lubrication type		Centralised lubrication system	
Tractor requirements			
Minimum power to the PTO	HP -kW	150 (110)	
Recommended power to the PTO	HP - kW	-	
PTO rotation rate	rpm	1000	
Splined PTO shaft profile		1"3/8 z=6	
Tow bar		Rotating, with "U" hook	
Diameter of the tractor's towing coupling pin	mm (in)	40 (1.6")	
Hydraulic system		2 single-acting control valves	
Quick-release couplings for hydraulic system		ISO 7241-1 series "A", size 08 1/2; max pressure 180 bar (2610 psi)	
Electrical system		1 electric socket 3-pin 12V 1 electric socket 7-pin 12V	
Noise level			
Sound level detected at driver's seat	db(A)	89	
PTO shaft			
Shear bolt		-	
Torque limiter	Nm (lbs*ft)	1600 (1180)	
Wrapping unit			
Roller diameter	mm (in)	-	273 (11)
Roller centre distance	mm (in)	-	1036 (41)
Number of film layers	no.	-	-
Bale loading method		-	Automatic

Technical data

Description	Unit of measure	Model	
		FastBale	FastBale Combi
Bale unloading method		-	Automatic
Maximum satellite rotation speed	rpm	-	42
Wrapping film reel characteristics			
Maximum diameter of the reel	mm (in)	-	280 (11)
Height of the reel	mm (in)	-	750 (30)
Film thickness	microns (mil)	-	25 - 35 (1 - 1.4)
Film pre-tensioning		-	75%
Overlap		-	50%

Technical data of the electronic control panel

Description	Unit of measure	Value	
		Tellus GO	Tellus
Display			
Type		Wide Colour LCD display	Colour LCD display
Size	mm (inch)	7"	12.1"
Display resolution	pixels	800x480	1024x768
Data transmission			
Serial type		D-SUB Female 9p. RS232	
USB		2* USB 2.0	4* USB 2.0
ISOBUS		ISOBUS In-Cab	
Kverneland Specific		Power/CAN connector (see options for cables)	
		D SUB Male 15p. Interface: ISO11786 J1939 Kverneland Input Interface	
Camera		Kverneland Camera Interface	RCA Camera Interface
Technical specifications			
Size	mm (inch)	259x157x65 (10.1"x6.1"x2.6")	297x284x76 (11.7x11.1x3)
Weight	kg (lb)	1.11 (2.09)	2.76 (6.08)
Supply voltage	V	8-28 Vdc	
Absorbed power	W	14	28
Protection rating (front)		IP54	
Working temperature	°C (F)	-10 / +50 (14 / 122)	
Humidity (without condensate)		10-90%	