

# safePATH ™

## Your Complete Legionella Control and Water Management Resource

SafePath188, brought to you by the water safety experts at HOH, gives you practical, step-by-step guidance in the planning, documentation, and implementation of a facility-wide risk management program. As your technical advisory partner, the HOH pros will help you take the guesswork and hassle out of your Legionella control practices, bringing your facility into full compliance with industry standards such as ASHRAE Standard 188.

## WATER MANAGEMENT MADE SIMPLE



### Get expert guidance and practical implementation tailored to your needs.

- **Eliminate compliance headaches**

HOH has intimate knowledge of industry standards, and stays current with the ever evolving maze of regulations. With our local expertise, we also know your state and municipal codes. What you get is the simplest, most efficient path to achieve compliance and assure the safety of your building occupants.

- **Simplify your planning and documentation process**

An HOH technician will help you draw up your water system's flow diagram, identify key vulnerabilities and risk levels, determine control points, draft an ongoing testing and mitigation plan, and then help you pull all the documentation together in the required format.

- **Implement turnkey testing and treatment**

HOH has been executing water safety solutions for more than 50 years. We don't just spout armchair advice. We give you the daily peace-of-mind that comes with a full-service partner, someone who knows how to turn from plan to practical, cost-effective action.

- **Get lightning fast emergency response**

Our local coverage means that an HOH technician is located nearby, giving you reliable access to our expertise. Draw a positive test result? We'll be there in short order to resolve the issue.

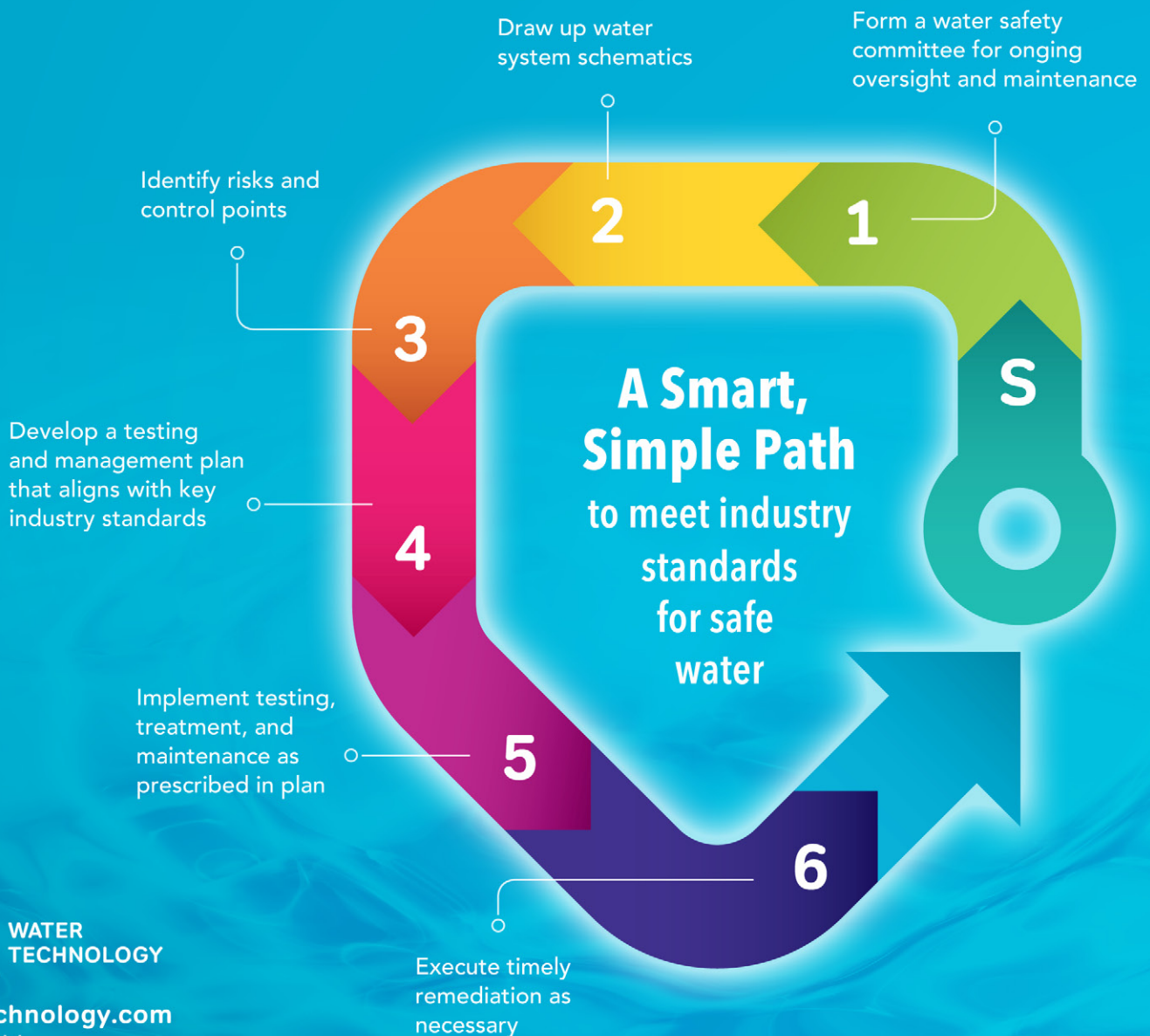
**Erase your water worries. Contact HOH today to learn more about SafePath188.**



# Get Smart On Legionella

Legionella, the bacteria that causes Legionnaires' disease, lives in water and can grow and spread through your facility's water system, placing the health of your occupants at serious risk. What type of conditions promote the bacteria? What are the critical steps to prevent its growth? What is your required duty of care as defined by industry standards? By law? These are a few of the questions that the water safety experts at HOH can help you answer. We then help you map out and follow a simple, cost-effective path to safety and compliance.

**safePATH** 



**HOH** WATER TECHNOLOGY

[hohwatertechnology.com](http://hohwatertechnology.com)  
(800) 577-2211

