



# 2019-2020

## ATHLETIC TRAINING ROOM EQUIPMENT CATALOG

800.743.7738 [TEAMEDGEATHLETICS.COM](http://TEAMEDGEATHLETICS.COM)

# TABLE OF CONTENTS



The Aluma Elite Series . . . . . 4



Hi-Lo Treatment Tables . . . . . 12



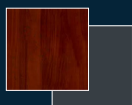
Wood/Laminate Products . . . . 16



Sideline Solutions . . . . . 38



Shop Our Other Brands . . . . . 44



Custom Branding/Colors . . . . 46

## WHY CHOOSE THE ATHLETIC EDGE?

In a short amount of time, we have proven to be one of the top brands for athletic training room furniture. We are constantly moving forward to deliver unmatched value to our customers in both product and service.

### INNOVATE.

We aim to stand out and foster innovative thinking to solve problems and push the creative barriers of product selection, custom branding, performance and price.

### EDUCATE.

We like to educate our employees, vendors, dealers, and customers on the benefits our products have to offer. The industry is always changing and we think it is important to keep everyone current with our latest developments.

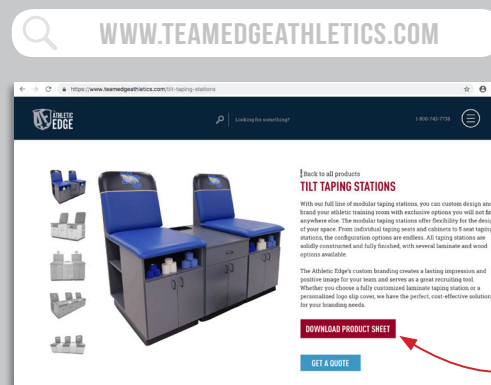
### DOMINATE.

We have a relentless desire to compete and win. We strive to exceed expectations and aren't satisfied until our customers, dealers, vendors, and employees are satisfied.

## DID YOU KNOW...

**Go to our website**

and find the product you'd like to learn more about...



...all of our product pages have **data sheets** available for you to download?

### What is a data sheet?

A data sheet is a document that provides all the specifications, details and options for each of our products.

If you are ready to order, or just want to learn more about this product, download the data sheet.



### INTERESTED IN THIS PRODUCT?

Simply fill out the data sheet and upload it using the form at the bottom of the product page.

800.743.7738 **TEAMEDGEATHLETICS.COM**

# WHAT'S NEW



**Aluma Elite  
Treatment Cabinet**

A6000 shown with elevation  
and options



**Stor-Edge Multi-Purpose  
Carts**

SR-011 & SR-015



**Hip & Knee Flexion  
Treatment Table PT9080**

**Aluma Elite Basic  
Treatment Table**

A4327LB shown  
with options



**Aluma Elite  
Treatment Table  
with Enclosed  
Cabinet**

A4201 shown  
with A4725 and options



**Hip & Knee Flexion  
Treatment Cabinets**

PT9081 & PT9082

## NEW PRODUCTS IN 2019





# THE ALUMA ELITE SERIES

- Taping Stations
- Taping Tables
- Treatment Tables
- Treatment Cabinets
- Mat Tables
- Modality Carts
- XL Recovery Carts
- Portable Workstations
- PRO Portable Workstations
- Stationary Cabinets
- Whirlpool Tables
- Lockers

## NEW PRODUCT

A6000 Aluma Elite  
Treatment Cabinet



 **ALUMA ELITE**  
by The Athletic Edge

The athletic training room is the focal point for your team's treatment and recovery. The Aluma Elite product line exemplifies top-of-the-line quality and craftsmanship. Such quality results in a line of aluminum equipment that can withstand everyday use and harsh environments.



**COMING SOON  
ENCLOSED TAPING  
STATIONS &  
CABINETS!**

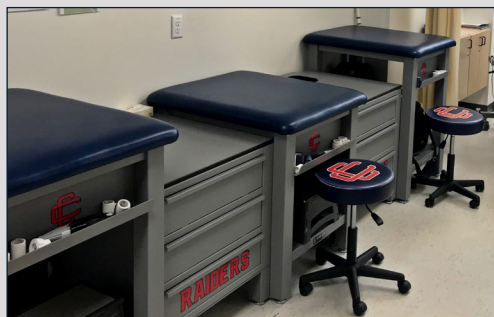
3 Seat Aluma Elite Taping Station with options

## ALUMA ELITE TAPING STATIONS

Our Aluma Elite Taping Stations are made from durable aluminum and come with standard tape holders and shelves on each taping seat. The standard center cabinet comes with three 5.5"H drawers, rugged phenolic top with waste bin cutout and garbage can. Taping seats can be ordered in 36" or 42" heights and can accommodate depths of 36", 42", or 48". Taping stations can be extended by adding additional cabinets and additional seats.

### FEATURES

- 84.5"W x 36", 42" or 48"D x 36" or 42" H
- Load Capacity: 500 lbs.
- Durable aluminum construction
- Tough powder coat finish
- Cabinet with 3 drawer lockable storage and phenolic top
- Tape holder and shelf on each taping seat
- Waste bin cutout in center cabinet, garbage can supplied
- 2" Semi-firm foam cushion
- Rounded corners
- Graphics Package: includes (1) school logo/name decal on each taping seat tape holder and on (1) cabinet drawer
- Ships as modular units (some assembly required)



## ALUMA ELITE TAPING TABLES



A4200

### FEATURES

- 30"W x 48"D x 36"H
- Load Capacity: 500 lbs.
- Durable aluminum construction
- Tough powder coat finish

- Tape holder and shelf on each end
- Graphics Package: includes (1) school logo/name decal on each tape holder (1 on each end)
- 2" Semi-firm foam cushion
- Rounded corners

## ALUMA ELITE MAT TABLES

**NOW AVAILABLE WITH  
ELEVATION**



A4495

### FEATURES

- A4495 - 4'W x 7'L (4 legs)
- A4520 - 5'W x 7'L (6 legs)
- A4525 - 6'W x 8'L (6 legs)
- Load Capacity: 4'x7' - 800 lbs.  
5'x7' & 6'x8' - 1,200 lbs.

- 18" H
- Durable aluminum construction
- Tough powder coat finish
- Tape holder on each end
- Leveling feet
- 1.5" Semi-firm foam cushion
- Rounded corners
- Graphics package: includes (1) school logo/name decal on each tape holder (1 on each end)

# ALUMA ELITE TREATMENT TABLES

## FEATURES

- 30"W x 78"L x 31"H
- Load Capacity: 750 lbs.
- Durable aluminum construction
- Tough powder coat finish
- Tape holder on each end
- Bottom shelf
- Graphics package: includes (1) school logo/name decal on each tape holder and (1) on bottom shelf
- 2" Semi-firm foam cushion
- Rounded corners

The dependable Aluma Elite Treatment Table is the perfect centerpiece for athletic training facilities. The extraordinary load capacity of 750 lbs., the standard 2 tape holders and aluminum shelf for storage make the Aluma Elite tables perfect for athletic trainers and athletes alike. Customize your treatment table to meet your needs with multiple cabinet options that provide ample storage, or the 70° manual Lift Back and 45° Split Leg cushion options.



A4201  
with options

A4201  
with options

## NEW! ENCLOSED CABINET

with Sliding Doors on Both Sides (A4725)



A4201  
with options

# ALUMA ELITE PRO TREATMENT TABLES

## FEATURES

- 30"W x 88"L x 31"H
- Load Capacity: 750 lbs.
- Durable aluminum construction
- Tough powder coat finish
- Tape holder on each end
- Bottom shelf
- Graphics Package: includes (1) school logo/name decal on each tape holder and (1) on bottom shelf
- 2" Semi-firm foam cushion
- Rounded corners



A4201-PRO  
with options



**Aluma Elite Treatment Cabinet**  
A6000 (available with or without elevation)

## ALUMA ELITE TREATMENT CABINETS

The Aluma Elite Treatment Cabinet is the perfect centerpiece for your athletic training facility.

### FEATURES

- 30"W x 78"L x 31"H
- Load Capacity: 750 lbs.
- Durable aluminum construction
- Tough powder coat finish
- (1) USB/120V outlet on each side
- Graphics Package: includes (1) large logo decal on foot end
- 2" Semi-firm foam cushion
- Rounded corners
- Stationary or hi-lo elevation option

## NEW PRODUCTS IN 2019



**Aluma Elite Basic  
Treatment Table**  
shown with options

## ALUMA ELITE BASIC TREATMENT TABLE

Custom build your aluminum treatment table to meet the specific needs of your athletic training room. The load capacity of 650 lbs and the welded aluminum frame make the Aluma Elite Basic Treatment Table the perfect fit for athletic trainers and athletes. Make it your own by adding length or width, laminate shelves or a cabinet that can be mounted on either end. Patient-friendly customizations include a nose hole and 70" manual lift back.

### FEATURES

- Configurations available:
  - 27" or 30"W
  - 72" or 78"L
  - 31"H
- Load Capacity: 650 lbs.
- Welded aluminum frame
- H-brace construction
- 2" high density foam cushion
- Rounded corners
- Tough powder coat finish



See our website for more product information  
**TEAMEDGEATHLETICS.COM**

# ALUMA ELITE MODALITY CARTS

Aluma Elite Modality Carts are constructed of durable aluminum and are offered in multiple configurations to suit your storage needs.

## FEATURES

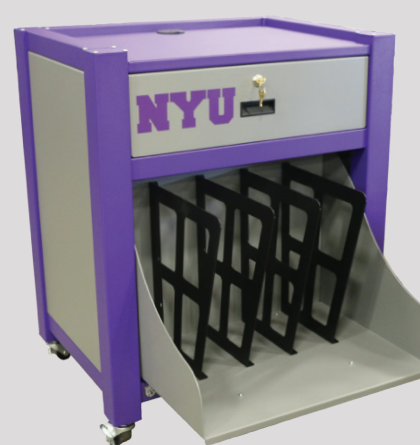
- 31"W x 23"D x 38"H
- Load Capacity: 500 lbs.
- Durable aluminum construction
- Tough powder coat finish
- Aluminum top with electrical grommet for easy cord routing
- 5.5" drawer(s)
- Drawer/door key locks
- 2" Non-marking casters with brakes
- Graphics package: includes (1) custom graphic on one door or drawer



A4203



A4204



A4383



A4510

# ALUMA ELITE XL RECOVERY CARTS

## FEATURES

- 49"W x 32"D x 43"H
- Load Capacity: 500 lbs.
- Durable aluminum construction
- Tough powder coat finish
- (1) Slide out boot rack, holds 2 pairs of NormaTec boots
- (2) Drawers (20.5"W x 17.5"D x 12"H)
- 2" Non-marking casters with brakes
- Built-in medical grade power strip with 6' cord
- Pop-up power with 3 outlets and 2 USB ports
- Graphics Package: includes (2) custom graphics on 2 front drawers



The XL Recovery Cart features mobility and storage for the NormaTec Leg Recovery System. Custom graphics are included on the front drawers of the cart. NormaTec Recovery System not included.



A5010

# WE HAVE THE EDGE.

## ALUMA ELITE PORTABLE WORKSTATION

The Aluma Elite Portable Workstation, with industry leading mobility features, is The Athletic Edge's latest solution for sideline treatment and care. Made from aluminum, and complimented with a rugged, textured, powder coat finish, this workstation offers an affordable and convenient solution for treating your athletes. The Aluma Elite Portable Workstation also features a stow-away handle, lockable storage cabinet that is accessible from both sides, marine grade plastic top and graphics package including two logo panels on top.



### ALL INCLUDED at no extra charge:

- Choose up to 2 of our 14 available powder coat colors for frame and accent
- Branding included and applied before shipping

### FEATURES

- 24"W x 73"L x 32"H
- Load Capacity: 750 lbs.
- Durable aluminum frame
- Textured powder coat finish with optional accent color
- 6" Pneumatic wheels
- Stow-away handle
- Lockable storage cabinet with access from both sides
- Marine grade plastic top
- Graphics Package: includes (2) logo panels on top



## ALUMA ELITE PRO PORTABLE WORKSTATION

- 6" wider and 5" longer than the Aluma Elite Portable Workstation at 30"W x 78"L x 32"H
- More storage than the Aluma Elite Portable Workstation



# ALUMA ELITE WHIRLPOOL TABLES

## FEATURES

- Single Whirlpool Table:  
46"W x 38.25"D x 31" or 34"H
- Double Whirlpool Table:  
80.5"W x 38.25"D x 31" or 34"H
- Load Capacity: 600 lbs.
- Durable aluminum construction
- Tough powder coat finish
- Rugged phenolic top
- Storage shelf
- Graphics Package: includes  
custom graphics on the 2  
sides of the table



A4162



A4159



# ALUMA ELITE LOCKERS

## FEATURES

- Available in:
  - 18", 24" or 30"W
  - 18" or 24"D
  - 72" or 78"H
- Durable aluminum construction
- Tough powder coat finish
- 4 Adjustable leveling feet
- Lockers ship fully assembled

Aluma Elite Lockers are sure to meet the needs of your athletes with their heavy-duty aluminum construction and tough powder coat finish. Each locker features a sturdy phenolic seat lid that opens for deep, ventilated storage along with a top shelf. Each locker includes two ventilated sides, making it ideal for storing your athletes' gear. Lockers ship fully assembled.



A3500  
with options



A3504  
with options





# Q&A

with BOWDOIN  
COLLEGE

**"I COULD NOT BE HAPPIER  
AND I'M HIGHLY IMPRESSED  
WITH THE QUALITY AND  
CUSTOMER SERVICE."**

**THE CUSTOMIZATION WE  
REQUIRED WAS EXACTLY WHAT  
WAS PROMISED."**

**Did your athletic  
training facility  
present any  
challenges when  
it came to treating  
athletes before you  
purchased your  
athletic training  
equipment?**

"Limited space which required specific thought on size and mobility of products. I would recommend AE products to others without reservation - exceptional product. Their great customer service helped create an exceptional product."

**Dan Davies**  
*Director of Athletic Training*  
Bowdoin College

# HI-LO TREATMENT TABLES

LET YOUR  
TABLE  
DO THE  
TALKING.

The Athletic Edge offers  
custom branding to showcase  
your team pride.

800.743.7738 [TEAMEDGEATHLETICS.COM](http://TEAMEDGEATHLETICS.COM)



# LAST TABLE™ (LEG & SHOULDER THERAPY TABLE)



LAST table  
with options

LAST table  
with options

Ergonomically designed, the LAST Leg & Shoulder Therapy Table with Hi-Lo elevating base is the first treatment/exercise table that supports bilateral training and specific anatomical positioning to achieve the desired results for both professional athletes and weekend warriors. The elevating base ensures that even athletes with limited mobility have access in any setting. To maximize your efforts as physical therapists, athletic trainers and clinicians, the LAST table is a must for your rehabilitation practice or training rooms.

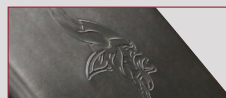
## FEATURES

- 30"W x 84"L x 19-37"H
- Load Capacity: 400 lbs.
- Adjustable top with standard elevating base
- White powder coat base
- Whisper-quiet lift system
- Height adjustment 19-37"
- Single foot control pedal
- Elevating back 0 - 70°
- Elevating legs 0 - 90°
- Leg height of 17"
- Drop legs 0 - 90°
- 2" High density foam cushions
- Rounded corners
- Low profile locking casters
- ADA Compliant

PATENT PENDING



SLIP COVER



DEBOSSED LOGO



COLOR EDGE PRINT



BASE BRANDING

**6 OPTIONAL BRANDING KITS AVAILABLE:**  
include white or custom colored  
base and cushion/base branding



See our website for more product information  
**TEAMEDGEATHLETICS.COM**



CAB-100-LST  
with options

**Leg & Shoulder  
Treatment Cabinet**

# THERA-P TABLE

Ease of use, multiple options and a sleek but durable design make the THERA-P line of electric treatment tables the choice of athletic trainers everywhere. Six top options allow athletic trainers to choose the table that best suits their needs and ensures the most comfortable positioning. The THERA-P electric treatment table is constructed of precision-cut flat and tube steel for durability and style. It also has a whisper-quiet lift system (with elevating foot pedal) and easy-to-operate caster system for better ergonomics.



THERA-P table with options

## 6 TOP CONFIGURATIONS

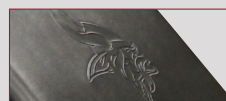


## FEATURES

- 27"W x 77"L x 17-35"H
- Load Capacity: 400 lbs.
- Durable and stylish steel base
- White powder coat base
- Whisper-quiet lift system
- Height adjustment 17-35"
- Single foot control pedal
- 27" Wide cushions in 6 different configuration options
- 2" High density foam cushions
- Rounded corners
- Low profile locking casters
- Head section angle range: +40° to -90°
- Lower extremity angle range: 0 to 65°
- Armrest horizontal range: 0 to 45°
- Armrest vertical range: 0 to 7"
- ADA Compliant



SLIP COVER



DEBOSSED LOGO



COLOR EDGE PRINT



BASE BRANDING

**6 OPTIONAL BRANDING KITS AVAILABLE:**  
include white or custom colored base and cushion/base branding



PT1113

## THERA-P BARIATRIC ELECTRIC TREATMENT TABLE

available with 40" wide cushion



ET-103 with options



## ELECTRIC TREATMENT CABINET

With an easy-to-operate adjustable height ranging from 29" to 44", and the numerous cabinet and top options, this cabinet serves most athletic trainers' needs. The cushion can be upgraded to include 70° lift back and 30° split leg options on the cushion top, and you can upgrade the cabinet configuration to include storage on one or two sides. Enhance your room by adding one of our custom branding options on the cushion or cabinet.

### FEATURES

- 30"W x 83"L x 29-44"H
- Load Capacity: 500 lbs.
- Durable steel cabinet with black powder coat
- Leveling feet on cabinet base
- 2" casters for easy movement
- (1) Mounted hand control
- Quiet and smooth lift columns elevate athletes with ease
- 2" High density foam cushion
- Rounded corners
- Door locks included on ET-101, ET-102, ET-106, and ET-107 models
- Fixed height (32") treatment cabinets also available



**Aluma Elite  
Treatment  
Cabinet**

A6000  
with  
options

Check out pg. 7 for more information!

## ME2000 ELEVATING TREATMENT TABLE

The ME2000 Elevating Treatment Table is a durable elevating table that adds versatility to your treatment spaces.

### FEATURES

- 28"W x 77"L x 24-36"H
- Load Capacity: 400 lbs.
- 24-36" Height range
- Steel base with white powder coat
- (2) Sliding doors on each side of table
- (1) Foot pedal
- Flat 2" high density foam cushion with nose hole
- Rounded corners



ME2000 with options

## PT2000 BARIATRIC HI-LO MAT TABLE



PT2000-47

The PT2000 Bariatric Hi-Lo Mat Table is ideal for the rehabilitation setting and is available in a range of sizes to provide your facility with the option of delivering optimum care for larger patients.

### FEATURES

- Available sizes: 4'W x 7'L, 5'W x 7'L and 6'W x 8'L
- Lifting Capacity: 1000 lbs.
- Height Range: 18-33"
- Durable steel base with powder coat finish
- 1.5" High density foam cushion
- Rounded corners
- Single foot control
- Convenient drop down casters
- ADA Compliant



PT2001-47

**PT2001 Bariatric  
Mat Table**  
(without casters)

# KEEPING WITH TRADITION

- Modular Taping Stations
- PRO Tilt Taping Stations
- Treatment Cabinets
- Treatment Tables
- Mat Tables
- Modality Carts
- Multi-Purpose Carts
- Stationary Cabinets
- Medical Cabinets

## NEW PRODUCTS

SR-011 Stor-Edge  
Multi-Purpose Cart

PT9080 Hip & Knee  
Flexion Treatment  
Table



## WOOD/LAMINATE PRODUCTS

The Athletic Edge's laminate and wood tables, taping stations and cabinets are built by the most experienced craftsmen. Our wood treatment products are perfect for keeping with the tradition of classic wood athletic training equipment. Try one of our custom stains to match the look and feel of your facility. Expect more with the quality and craftsmanship of The Athletic Edge's laminate and wood products!

# TAPING STATIONS



3 Seat Tilt Taping Station  
with Options

With our full line of taping stations you can custom design and brand your training room with exclusive options you will not find anywhere else. The Athletic Edge's custom branding creates a lasting impression and positive image for your team and serves as a great recruiting tool. Whether you choose a fully customized laminate top or a personalized cushion logo slip cover, we have the perfect, cost-effective solutions for your branding needs.

## FEATURES

- Depths (Flat taping stations): 36", 42" or 48"
- Depths (Tilt taping stations): 42" or 48"
- Heights: 36" or 42"
- Taping seats: 24"W (26"W with cushion)
- Center storage modules: 24"W
- Load Capacity: 450 lbs.
- Laminate and wood options
- Dowel and glue construction
- Full extension drawer glides
- Front and side access
- 3" Black wire pull handles
- 2" high density cushion
- Fully finished cabinets



3 Seat Tilt Taping Station  
with Options

Visit our website for options  
[WWW.TEAMEDGEATHLETICS.COM](http://WWW.TEAMEDGEATHLETICS.COM)



Taping Stations also  
available with custom  
full color laminate

# PRO TILT TAPING STATIONS



**PRO-TTS1**  
with options



**PRO-TTS1**  
with options



**PRO-TTS3** with options

## FEATURES

- 1 Seat: 51.5"W x 46"D x 36"H
- 2 Seat: 95.25"W x 46"D x 36"H
- 3 Seat: 139"W x 46"D x 36"H
- 4 Seat: 182.75"W x 46"D x 36"H
- Load Capacity: 550 lbs. per seat
- 36"W tilt back cushion
- 1 Drawer
- 2 Hinged doors
- Armrests on both sides
- Available in laminate or wood options
- Full extension glides on drawers
- 110° Euro Hinges
- Black wire pull handles
- Seamless 2" high density foam cushion
- Rounded corners

The PRO Tilt Taping Stations feature 36" wide cushions to accommodate larger athletes. The taping stations come with tilt back cushions, armrests on both sides of the taping seats and ample storage space. Each taping seat comes with one full extension drawer and cabinet with two doors. Taping stations can be configured as one seat, two seat, or three seat taping stations and are available in laminate or wood.



# TREATMENT CABINETS

## NEW PRODUCTS

### PT9081 & PT9082 Hip & Knee Flexion Treatment Cabinets



PT9081

PT9082

The flexible split leg design and storage solutions of the PT9081 and PT9082 treatment cabinets provide athletic trainers and therapists with versatility and functionality all in one. Each leg cushion can be manually adjusted to allow for hip and knee flexion positions that make treatments more convenient and comfortable. Custom brand this product with your team's logo.

## FEATURES

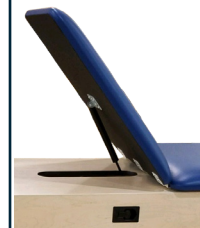
### PT9081

- 30"W x 81.5"L x 31"H
- Load Capacity: 600 lbs.
- 3 Section cabinet, open on both sides
- (1) Adjustable shelf for each section
- Available in wood or laminate finishes
- 2" High density foam cushion
- Lift back cushion
- Elevating Back 0 - 70°
- Elevating Legs 0 - 90°
- Hip & knee flexion
- Rounded corners

### PT9082

- 30"W x 81.5"L x 31"H
- Load Capacity: 600 lbs.
- 3 Section cabinet
- (6) Hinged doors on front with a solid back
- (1) Adjustable shelf in each section
- Available in wood or laminate finishes
- 110° Euro hinges on doors
- 2" High density foam cushion
- Lift back cushion
- Elevating Back 0 - 70°
- Elevating Legs 0 - 90°
- Hip & knee flexion
- Rounded corners

## NEW OPTION on all Treatment Cabinets with Lift Back option



CAB-LB with 55°  
Gas Shock Lift  
Back Cushion



CAB-LB-NGS

## 55° Ratchet Style Lift Back Cushion (No Gas Shock)

## NEW CAB-130 & CAB-140 configurations available



See our website for more product information  
**TEAMEDGEATHLETICS.COM**



## CAB-010

CAB-010 with options

The CAB-010 model features closed storage for a neater presentation, with a three section cabinet with one adjustable shelf in each section and six hinged doors on the front.

### FEATURES

- 30"W x 78"L x 31"H
- Load Capacity: 600 lbs.
- 3 Section cabinet
- (6) Hinged doors on front with a solid back
- (1) Adjustable shelf in each section
- Available in wood or laminate finishes
- 110" Euro hinges on doors
- 2" High density foam cushion
- Rounded corners
- Black wire pull handles



See our website for more product information  
**TEAMEDGEATHLETICS.COM**



CAB-020  
with options

## CAB-020

The CAB-020 model features an open three section cabinet with one adjustable shelf in each section. Apply your team or organization logo to the top and to the cabinet exterior.

### FEATURES

- 30"W x 78"L x 31"H
- Load Capacity: 600 lbs.
- 3 Section cabinet, open on both sides
- (1) Adjustable shelf for each section
- Available in wood or laminate finishes
- 2" High density foam cushion
- Rounded corners



CAB-050 with options

## CAB-050

The CAB-050 model is a two section cabinet with sliding doors, ideal for storing larger items. Apply your team or organization logo to the top and to the cabinet exterior.

### FEATURES

- 30"W x 78"L x 31"H
- Load Capacity: 600 lbs.
- 2 Section cabinet
- (2) Sliding doors on front with a solid back
- (1) Adjustable shelf in each section
- Available in wood or laminate finishes
- 2" High density foam cushion
- Rounded corners
- Black wire pull handles



## CAB-090N TREATMENT & RECOVERY CABINET

CAB-090N

Athletic trainers will save time by storing the NormaTec within arm's reach, which lets the athletes control treatment if needed, allowing the athletic trainer to multi-task. The boot rack and vented drawer minimizes setup time, storage and clutter. NormaTec recovery system not included.

### FEATURES

- 30"W x 83"L x 32"H
- Load Capacity: 600 lbs.
- Dual extension drawer (22"L x 17"W x 17"H) accommodates the NormaTec product line
- Dual extension boot rack (44"L x 24"W) accommodates 2 pairs of NormaTec boots
- Boot rack contains 2 trays (24"L x 11"W x 4.5"H) that hold the NormaTec control units
- Available in wood or laminate finishes
- Wood cabinets available in natural finish or black stain
- 2" High density foam
- Rounded corners
- 55° Lift Back and 45° Split Legs
- Graphics package with NormaTec and Athletic Edge branding
- Add your school/organization logo above the pull out drawers for no additional charge



CAB-090N



CAB-070  
with options



## CAB-070

The CAB-070 model is a three section cabinet that features a combination of open and closed storage, with four hinged doors on each side, open storage under foot end and one adjustable shelf in each section.

### FEATURES

- 30"W x 78"L x 31"H
- Load Capacity: 600 lbs.
- 3 Section cabinet
- (4) Hinged doors on each side

- Open storage under foot end
- (1) Adjustable shelf in each section
- Available in wood or laminate finishes
- 110° Euro hinges on doors
- 2" High density foam cushion
- Rounded corners
- Black wire pull handles



CAB-120 with options

## CAB-120

The CAB-120 Treatment Cabinet is a multi-purpose treatment cabinet and taping station, featuring a three section cabinet with pass through storage on sides with adjustable shelves, a taping station end with a 55° lift back with manual gas shock, two hinged doors and an open cubby.

### FEATURES

- 27"W x 78"L x 34"H
- Load Capacity: 600 lbs.
- 3 Section cabinet
- Open pass through storage on both sides
- Tape station seat on one end
- Open cubby and (2) hinged doors

- (1) Adjustable shelf in each section
- Available in wood or laminate finishes
- 110° Euro hinges on doors
- 2" High density foam cushions
- Rounded corners
- 55° Lift back with manual gas shock
- Black wire pull handles

# EDGE SPORT WOOD TREATMENT TABLES

Each Edge Sport Wood Treatment Table comes standard with solid hardwood legs and base, H-base construction, a thick 3/4" plywood top, comfortable 2" foam padding, softly rounded corners and dual-bolted leg assembly that folds down for easy shipping.



TESS-2772  
with options



FESS-6L



FESS-6L with options

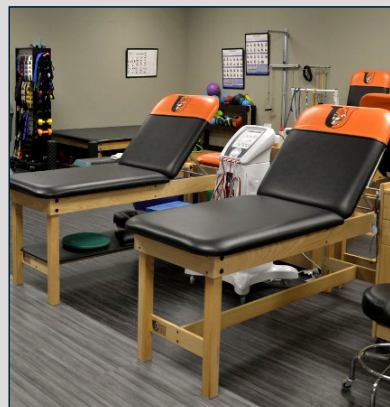
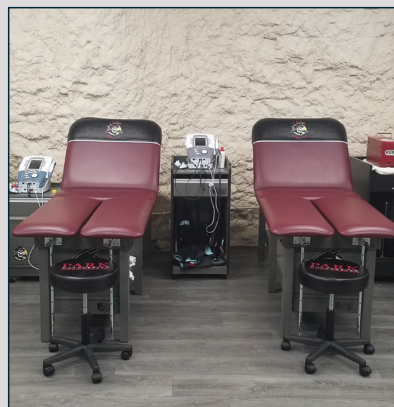
## FEATURES

### 4 Leg Edge Sport

- Configurations available:
  - 27" or 30"W
  - 72" or 78"L
  - 31"H
  - Flat top or lift back
- Load Capacity: 550 lbs.
- Solid hardwood H-brace construction
- 2" High density foam cushion
- Rounded corners
- Dual-bolted leg assembly that folds down for convenient shipping

### 6 Leg Edge Sport

- 30"W x 78"L 31"H
- Load Capacity: 800 lbs.
- Flat or lift back option available
- Solid hardwood 6 Leg H-brace construction
- 2" High density foam cushion
- Rounded corners
- Triple-bolted leg assembly
- Bottom shelf for added storage



# PRO 6 LEG EDGE SPORT WOOD TREATMENT TABLES



FESS-6L-PRO with options

## FEATURES

- 30"W x 84"L x 31"H
- Load Capacity: 800 lbs.
- Flat or lift back option available
- Solid hardwood 6 Leg H-brace construction
- 2" High density foam cushion
- Rounded corners
- Triple-bolted leg assembly
- Bottom shelf for added storage

## NEW NSK ("No Shin Kick") WOOD TREATMENT TABLE



This "No Shin Kick" design provides the athletic trainer extra room while providing treatment.

# TREATMENT TABLES

## NEW PRODUCTS

### Basic Wood Treatment Table & Essential Wood Treatment Table



I9407

FEWT-2772 with options

Our Basic Wood Treatment Table is built to meet your needs and budget. Each table comes standard with H-brace construction, bottom shelf, comfortable 2" high density foam cushion, 70° manual lift back with multi-position elevation and softly rounded corners. This table is the perfect fit for any treatment space. Some assembly required.

The Essential Wood Treatment Table comes standard with a poplar hardwood frame, H-brace construction, comfortable 2" high density foam cushion, softly rounded corners and dual-bolted folding leg assembly for easy shipping. Make it your own by adding length, width, shelves or a cabinet that can be mounted on either end. Other options available include patient-friendly customizations consisting of a nose hole cushion and a 70° manual lift back with 6 position elevation.

## FEATURES

### Basic Wood Treatment Table I9407

- 30"W x 73"L x 31"H
- Load Capacity: 450 lbs.
- Solid hardwood frame
- H-brace construction
- Bottom shelf
- 2" High density foam cushion, black upholstery
- Rounded corners and nose hole
- 70° Manual multi-position elevating lift back
- Knock-down packaging with some assembly required

### Essential Wood Treatment Table FEWT

- Configurations available:
  - 27"W or 30"W
  - 72"L or 78"L
  - 31"H
  - Flat top or lift back
- Load Capacity: 500 lbs.
- Solid Poplar hardwood frame
- H-brace construction
- 2" High density foam cushion
- Rounded corners
- Dual-bolted folding leg assembly for convenient shipping



PT9080

## HIP & KNEE FLEXION TREATMENT TABLE

The flexible split leg design of this solid hardwood treatment table makes it extremely functional for multiple treatment positions. Each padded leg cushion can be manually adjusted to the desired hip and knee flexion positions making treatments easier and more comfortable for the athlete and athletic trainer.

## FEATURES

- 30"W x 81.5"L x 32"H
- Load Capacity: 800 lbs.
- Solid hardwood construction
- Dual brace support
- 2" High density foam cushion
- Rounded corners
- Manual lift back
- Elevating back 0 - 70°
- Elevating legs 0 - 90°
- Hip/Knee flexion
- Bottom shelf for added storage

A photograph of a Houston Texans athletic training room. In the foreground, a black padded bench with the Texans logo on the backrest is visible. On the bench, there are several stacks of white athletic tape and various medical supplies in clear plastic containers. In the background, more benches and medical equipment are visible, along with a person in a dark shirt working in the distance.

# Q&A

with Geoff Kaplan  
Houston Texans



## CASE STUDY: HOUSTON TEXANS

The Athletic Edge completed a project for the Houston Texans athletic training room. Geoff Kaplan, Senior Director of Sports Medicine and Head Athletic Director for the Texans, shares his experience working with The Athletic Edge.

# Q&A WITH GEOFF KAPLAN

## SENIOR DIRECTOR OF SPORTS MEDICINE AND HEAD ATHLETIC TRAINER | HOUSTON TEXANS

**Q: Did your athletic training facility present any challenges when it came to treating athletes before you purchased your Athletic Edge equipment?**

A: "We struggled with having everything that we wanted/needed. The ability to have closed storage, change working height to better treat specific injuries, and to have split leg and head elevation. Having the tables drop in height allows for better practitioner and patient positioning for manual therapy techniques. Better ergonomics and biomechanics."

**Q: What made you decide to work with The Athletic Edge?**

A: "The Athletic Edge was able to customize and create exactly what our vision was for our Athletic Training Room. We were not confined to a box to work in. We reached for the stars and AE came through."

**"WE WOULD RECOMMEND THE ATHLETIC EDGE PRODUCTS AND STAFF TO EVERYONE THAT NEEDS ATHLETIC TRAINING ROOM EQUIPMENT. WE ARE EXTREMELY HAPPY WITH THE PRODUCT AND THE SUPPORT OF AE."**

**Q: Are you pleased with the results of your service and equipment?**

A: "We are more than pleased with the products. The AE staff was extremely helpful in the process. They were very knowledgeable and willing to answer any questions we had. The staff took the time to make sure that we were happy as the customer. A great relationship has been fostered."

**Q: What are some of your favorite features of your new Athletic Edge equipment?**

A: "Every feature!! There are multiple options for patient positioning with the LAST Tables. This allows for better care and positioning for manual therapy."



LAST Table  
with options

Rolling Stool

Aluma Elite  
Modality Cart

Electric  
Treatment  
Cabinet

Aluma Elite  
Portable Workstation

# CLASSROOM / LAB TREATMENT TABLE

The Classroom/Lab Treatment Table is a multi-purpose desk and treatment table perfect for a clinic or classroom setting.



FESS-LAB-6L with options



## FEATURES

- 27"W x 78"L x 32"H
- Load Capacity: 600 lbs.
- Solid hardwood frame
- 6 Leg construction
- Flat, laminate top
- 24" Clearance for stools

# WALL MOUNT FOLDING TREATMENT TABLE

The Wall Mount Folding Treatment Table is a fold out treatment table ideal for small spaces.



WMFTT

## FEATURES

- 24"W x 72"L x 31"H
- Load Capacity: 450 lbs.
- Solid hardwood frame
- 2" High density foam cushion
- Durable wall mounting plate



FESS-LAB

# COMBINATION LAB TABLE/DESK

The Combination Lab Table/Desk is a desk or treatment table ideal for classroom training. The table is constructed of solid hardwood with a flat, laminate top. Some on site assembly required.

## FEATURES

- 27"W x 72"L x 30"H
- Load Capacity: 450 lbs.
- Solid hardwood frame
- 4 Leg construction
- Flat, laminate top
- 24" Clearance for stools



*Custom laminate colors and custom printed laminate available on orders of 10 or more tables. Please call for pricing.*

VISIT OUR WEBSITE FOR MORE PRODUCT INFORMATION,  
DATA SHEETS AND MORE!

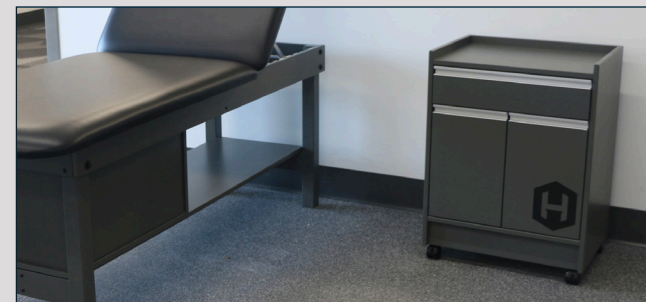
[TEAMEDGEATHLETICS.COM](http://TEAMEDGEATHLETICS.COM)

# STOR-EDGE™ MODALITY CARTS

## FEATURES

- 2" Swivel nylon casters
- Shipped fully assembled
- Full extension glides
- Wood or laminate

The mobility and size of our Stor-Edge™ Modality Carts makes it easy for athletic trainers and therapists to bring instruments, supplies, and even a writing surface right to each athlete during treatment. They are designed for athletic training room use.



### SMC-001

- 24"W x 18"D x 32"H
- (1) 5.5" Drawer
- Adjustable shelf



with options

### SMC-002

- 24"W x 18"D x 32"H
- (1) 5.5" Drawer
- (2) Hinged doors
- (1) Adjustable shelf



### SMC-003

- 18"W x 18"D x 30"H
- (1) 5.5" Drawer
- (1) Hinged door
- (1) Adjustable shelf



### SMC-004

- 18"W x 18"D x 30"H
- (1) 8" Drawer
- (1) 13" Drawer



### SMC-005

- 18"W x 18"D x 30"H
- (1) 5.5" Drop down
- Open shelf



### SMC-006

- 18"W x 18"D x 30"H
- (1) 5.5" Drawer
- Open shelf



### SMDC-001

- 24"W x 18"D x 38"H
- (1) 5.5" Drawer
- (1) Adjustable shelf



### SMDC-002

- 24"W x 18"D x 38"H
- (2) 5.5" Drawers
- (2) Hinged doors
- (1) Adjustable shelf



with options

### SMDC-003

- 24"W x 18"D x 38"H
- (5) 5.5" Drawers



### SMDC-005

- 19"W x 23"D x 38"H
- (1) 4" Drawer • Cord cutout
- Large pull out with (3) storage racks
- **SMDC-006** available with (4) racks - 24"W x 23"D x 38"H



with options



### SMDC-007

- 15"W x 20"D x 32"H
- (3) 7.5" Drawers

# STOR-EDGE™ STATIONARY CABINETS



SC-006D



SC-007 with options



## FEATURES

- Available in wood or laminate finishes
- Cabinets available with or without exterior double doors
- Full extension glides on all drawers
- Black wire pull handles
- Heavy duty overlay hinges
- Weight racks and J-hooks provided where applicable
- Cabinets ship fully assembled
- All cabinets must be fastened to the wall (fasteners not included)

Our Stor-Edge™ line of durable, high-quality cabinets come in wood and laminate finishes. With many configurations to choose from, these cabinets can be installed individually, or in a group for expanded room or wall storage. Slatwall material is used on cabinet backs, where applicable, to provide additional storage options and a more durable alternative to standard peg-board designs.



See our website for more product information  
**TEAMEDGEATHLETICS.COM**



SC-003



SC-009



### SC-003

- 32"W x 23"D x 76"H
- (3) 8" Drawers
- (3) Adjustable shelves
- Slatwall hanger board
- (6) J-Hooks
- **SC-003D:** SC-003 features with (2) Exterior doors



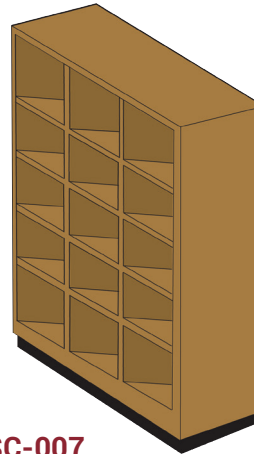
### SC-004

- 32"W x 23"D x 76"H
- (5) Adjustable shelves
- **SC-004D:** SC-004 features with (2) Exterior doors



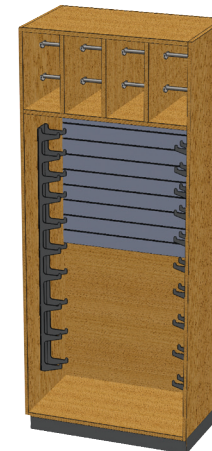
### SC-006

- 32"W x 23"D x 76"H
- (4) 11" Drawers
- (2) Fixed shelves
- (6) Adjustable shelves
- **SC-006D:** SC-006 features with (2) Exterior doors



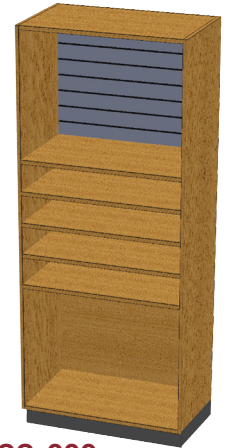
### SC-007

- 48"W x 18"D x 84"H
- (15) Fixed cubby storage
- Single Cubby: 15"W x 18"D x 15"H



### SC-008

- 32"W x 23"D x 76"H
- (8) Band dispenser bars
- (2) weight hanger racks (10 weights per rack)
- Slatwall hanger board
- (12) J-Hooks
- **SC-008D:** SC-008 features with (2) Exterior doors



### SC-009

- 32"W x 23"D x 76"H
- (5) Adjustable shelves
- Slatwall hanger board
- (6) J-Hooks
- **SC-009D:** SC-009 features with (2) Exterior doors



### SC-010

- 32"W x 23"D x 76"H
- Bottom storage compartment
- Slatwall hanger board
- (12) J-Hooks
- **SC-010D:** SC-010 features with (2) Exterior doors



### SC-011

- 32"W x 23"D x 76"H
- (1) Adjustable shelf
- (1) Clothes rod
- (2) 11" Drawers
- Slatwall hanger board
- (6) J-Hooks
- **SC-011D:** SC-011 features with (2) Exterior doors



### SC-012

- 32"W x 23"D x 76"H
- (3) Adjustable shelves
- (6) Storage cubbies
- Slatwall hanger board
- (12) J-Hooks
- **SC-012D:** SC-012 features with (2) Exterior doors



### SC-013

- 32"W x 23"D x 76"H
- (2) Adjustable shelves
- (1) Clothes rod
- Slatwall hanger board
- (6) J-Hooks
- **SC-013D:** SC-013 features with (2) Exterior doors



### SC-014

- 32"W x 23"D x 76"H
- (2) Adjustable shelves
- (4) 8" Drawers
- Slatwall hanger board
- (6) J-Hooks
- **SC-014D:** SC-014 features with (2) Exterior doors



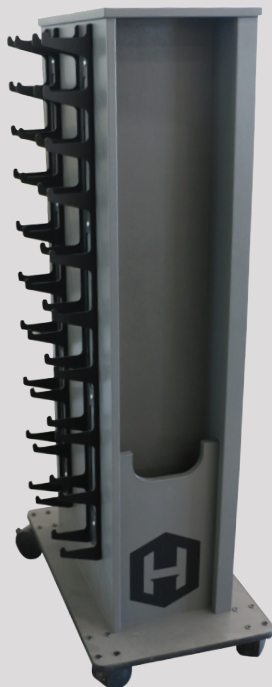
### SC-015

- 48"W x 23"D x 76"H
- (8) Adjustable shelves
- (4) 8" Drawers
- **SC-015D:** SC-015 features with (2) Exterior doors

# STOR-EDGE™ MULTI-PURPOSE CARTS



SR-001



SR-003 with options



SR-009 with options



## FEATURES

- Available in wood or laminate finishes
- Full extension glides on all drawers
- Black wire pull handles
- 110° Euro hinges on doors
- Weight racks and J-hooks provided where applicable
- 4" Heavy duty casters
- Cabinets ship fully assembled, except for casters

Our custom-built Stor-Edge™ Multi-Purpose Carts keep weights, resistance bands, and other tools and equipment at hands' reach. Available in several model options, each is crafted of solid wood or laminate and is made in the U.S. The Stor-Edge™ Multi-Purpose Carts come in many different configurations for a variety of uses and sit on casters for ease and movability.



See our website for more product information  
**TEAMEDGEATHLETICS.COM**

CARTS SHOWN WITH ACCESSORIES (NOT INCLUDED).  
PHOTOS DO NOT REPRESENT WEIGHT KITS.

**VISIT OUR WEBSITE FOR MORE  
PRODUCT INFORMATION,  
DATA SHEETS AND MORE!**

**TEAMEDGEATHLETICS.COM**



Front



Back

### SR-001

- 30"W x 18"D x 72"H
- Front: slatwall & band dispensers
- Back: slatwall
- Sides: weight racks
- (9) 4" Double hooks
- (10) J-Hooks

### OPTIONS:

#### SR-WK1 - Weight Kit 1

- (2) 1-10 lbs. Dumbbell sets
  - (1) 16 pc. Hugger weight set
  - (1) 5 Rep. resistance band set
- #### SR-MI-001 - Mirror
- 19.75"W x 65.5"H (back side)



Front



Back

### SR-002

- 30"W x 24"D x 61"H
- Front: doors w/(3) shelves
- Back: slatwall
- Sides: weight racks
- (4) 4" Double hooks
- (10) J-Hooks

### OPTIONS:

#### SR-WK2 - Weight Kit 2

- (2) 1-10 lbs. Dumbbell sets
- (1) 16 pc. Hugger weight set



Front



Back

### SR-003

- 30"W x 18"D x 60"H
- Front: slatwall
- Back: weight racks
- Right side: band dispensers
- Left side: storage compartment
- (4) 4" Double hooks
- (10) J-Hooks

### OPTIONS:

#### SR-WK3 - Weight Kit 3

- (2) 1-10 lbs. Dumbbell sets
- (1) 16 pc. Hugger weight set
- (1) 5 Rep. resistance band set
- (1) 1-3 lbs. Weight bar set



Front



Back

### SR-004

- 24"W x 24"D x 61"H
- Front: band dispensers
- Back: slatwall
- Sides: weight racks
- (3) 4" Double hooks
- (6) J-Hooks

### OPTIONS:

#### SR-WK4 - Weight Kit 4

- (2) 1-10 lbs. Dumbbell sets
- (2) 1-5 lbs. Dumbbell sets
- (1) 5 Rep. resistance band set



Front



Back

### SR-005

- 32"W x 32"D x 72"H
- Front: cubbies, drop down desk, (3) 8" drawers
- Back: band dispensers & slatwall
- Left side: weight racks
- Right side: mirror
- (4) 4" Double hooks
- (12) J-Hooks

### OPTIONS:

#### SR-WK3 - Weight Kit 3

- (2) 1-10 lbs. Dumbbell sets
- (1) 16 pc. Hugger weight set
- (1) 5 Rep. resistance band set
- (1) 1-3 lbs. Weight bar set



Front



Back

### SR-006

- 36"W x 36"D x 73"H
- Front: Doors w/(2) shelves & (2) 10" Drawers
- Back: weight racks
- Sides: slatwall
- (4) 4" Double hooks
- (12) J-Hooks

### OPTIONS:

#### SR-WK3 - Weight Kit 3

- (2) 1-10 lbs. Dumbbell sets
- (1) 16 pc. Hugger weight set
- (1) 5 Rep. resistance band set
- (1) 1-3 lbs. Weight bar set

*\*Only available in wood with flush mount handles*

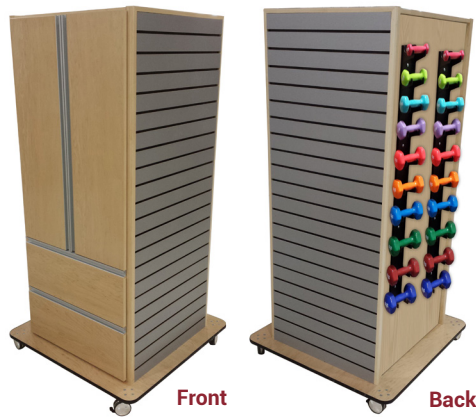


Front

Back

### SR-008 FEATURES:

- 46"W x 26"D x 43"H
- Front: (5) 18"W drawers & (1) 18"W door
- Back: slatwall
- Left side: weight racks
- Right side: storage compartment
- (4) 4" Double hooks
- (10) J-Hooks



Front

Back

### SR-009 FEATURES:

- 36"W x 36"D x 73"H
- Front: doors w/(2) Shelves & (2) 10" drawers
- Back: weight racks
- Sides: slatwall
- (4) 4" Double hooks
- (10) J-Hooks

### OPTIONS:

#### SR-WK3 - Weight Kit 3

- (2) 1-10 lbs. Dumbbell sets
- (1) 16 pc. Hugger weight set
- (1) 5 Rep. resistance band set
- (1) 1-3 lbs. Weight bar set

#### SR-MI-009 - Mirror

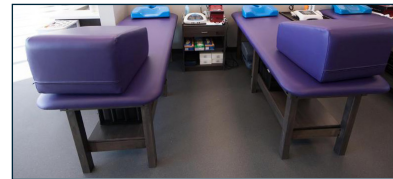
- 26.5"W x 65.5"H (back side)



Front

### SR-010 FEATURES:

- 72"W x 25.5"D x 33"H
- Front: (2) sliding doors
- Back & sides: solid



**BOLSTERS AVAILABLE**  
[TEAMEDGEATHLETICS.COM](http://TEAMEDGEATHLETICS.COM)



Front



Front



Front



Front

### SR-011 FEATURES:

- 50"W x 24"D x 65"H
- (4) Cubbies
- (4) Double hooks in each compartment
- (2) Drawers
- (4) 4" Casters

### SR-012 FEATURES:

- 48"W x 20"D x 64"H
- (4) Cubbies
- (4) Double hooks in each compartment
- (2) Drawers
- 4" Toe-kick

### SR-013 FEATURES:

- 26"W x 24"D x 65"H
- (2) Cubbies
- (4) Double hooks in each compartment
- (1) Drawer
- (4) 4" Casters

### SR-014 FEATURES:

- 24"W x 20"D x 64"H
- (2) Cubbies
- (4) Double hooks in each compartment
- (1) Drawer
- 4" Toe-kick



Front

### SR-015 FEATURES:

- 34.5"L x 22.5"W x 36"H
- (4) 4" Heavy duty casters
- Solid wood
- Top tray
- Open storage on lower shelf
- Wire pull handles

### OPTIONS:

#### SR-WK5 - Weight Kit 5

- (2) 1-10 lbs. Dumbbell sets

# PORTABLE MIRRORS

The Athletic Edge Portable Treatment Mirror is specifically designed with distortion free glass and is available with a single or double-sided 72" mirror. It can be moved around your facility hassle-free with its 2" swivel casters to accommodate treatment needs.



MI-1000  
Front

MI-1000  
Back

## FEATURES

- 24"W x 20"D x 72"H
- Portable full length mirror
- Distortion free glass
- 2" Casters
- Laminate or wood options available

# STOR-EDGE™ MEDICAL CABINETS

## FEATURES

### Wall Cabinets

- Available in wood or laminate finishes
- 1 Adjustable shelf in each cabinet
- 110° Euro hinges on doors
- Black wire pull handles
- Right or left hinges available on single door cabinets
- Mounting hardware not supplied
- All cabinets must be fastened to the wall (fasteners not included)



SEMCW-007

SEMCW-007

### Base Cabinets

- Available in wood or laminate finishes
- (1) Adjustable shelf in each enclosed cabinet (Not available in sink cabinets)
- 110° Euro hinges on doors
- Full extension drawers glides
- Black wire pull handles
- Right or left hinges available on single door cabinets
- High pressure laminate countertop with backsplash
- Black toe-kick plate
- Some assembly required (Backsplash not attached during shipping)



SEMCB-003

SEMCB-003-1D



VISIT OUR WEBSITE FOR MORE PRODUCT  
INFORMATION, DATA SHEETS AND MORE!

[TEAMEDGEATHLETICS.COM](http://TEAMEDGEATHLETICS.COM)

Our fully modular, cost-effective Stor-Edge™ Medical Cabinet line is functional, durable, aesthetically pleasing, and designed for multiple applications. All cabinets are handcrafted in the US and are available in several wood or laminate choices. Choose to apply custom branding to carry your brand throughout your treatment area.

## MEDICAL WALL CABINETS - 24"H CONFIGURATIONS:

### SEMCW-001:

- 18"W x 12"D x 24"H
- (1) Adjustable Shelf
- (1) Hinged Door



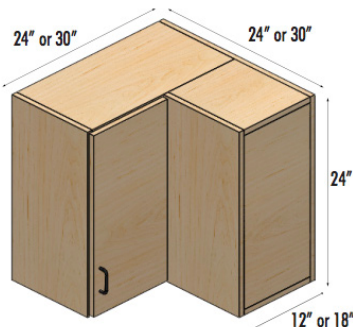
### SEMCW-009:

- 18"W x 18"D x 24"H
- (1) Adjustable Shelf
- (1) Hinged Door



### SEMCW-004:

- 24"W x 12"D x 24"H
- "L" Corner Unit
- (1) Adjustable Shelf
- (1) Hinged Door



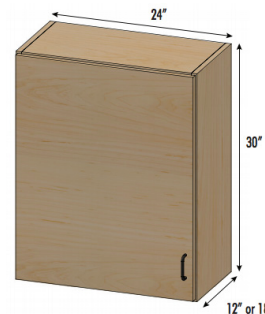
### SEMCW-012:

- 30"W x 18"D x 24"H
- "L" Corner Unit
- (1) Adjustable Shelf
- (1) Hinged Door



### SEMCW-006:

- 24"W x 12"D x 30"H
- (1) Adjustable Shelf
- (1) Hinged Door



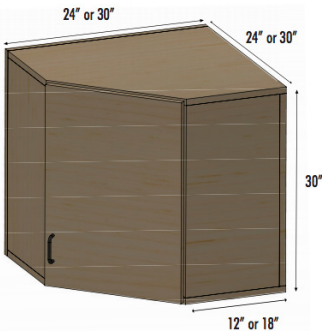
### SEMCW-014:

- 24"W x 18"D x 30"H
- (1) Adjustable Shelf
- (1) Hinged Door



### SEMCW-018:

- 24"W x 12"D x 30"H
- Corner Unit
- (1) Adjustable Shelf
- (1) Hinged Door



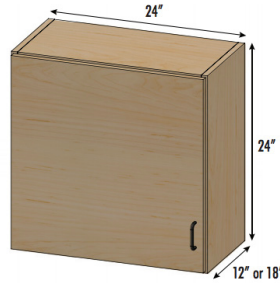
### SEMCW-020:

- 30"W x 18"D x 30"H
- Corner Unit
- (1) Adjustable Shelf
- (1) Hinged Door



### SEMCW-002:

- 24"W x 12"D x 24"H
- (1) Adjustable Shelf
- (1) Hinged Door



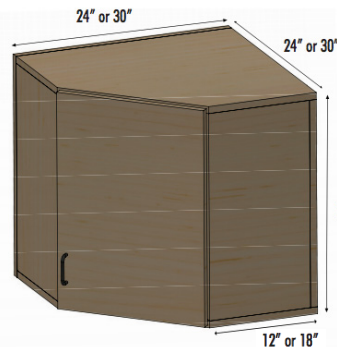
### SEMCW-010:

- 24"W x 18"D x 24"H
- (1) Adjustable Shelf
- (1) Hinged Door



### SEMCW-017:

- 24"W x 12"D x 24"H
- Corner Unit
- (1) Adjustable Shelf
- (1) Hinged Door



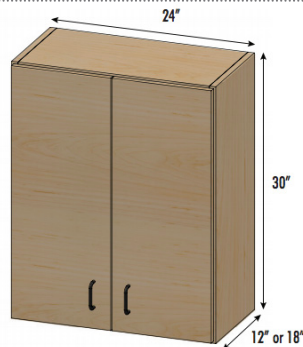
### SEMCW-019:

- 30"W x 18"D x 24"H
- Corner Unit
- (1) Adjustable Shelf
- (1) Hinged Door



### SEMCW-007:

- 24"W x 12"D x 30"H
- (1) Adjustable Shelf
- (2) Hinged Doors



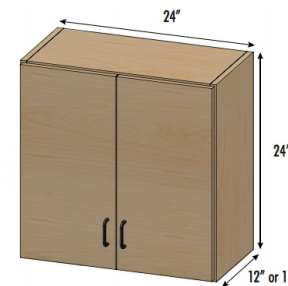
### SEMCW-015:

- 24"W x 18"D x 30"H
- (1) Adjustable Shelf
- (2) Hinged Doors



### SEMCW-003:

- 24"W x 12"D x 24"H
- (1) Adjustable Shelf
- (2) Hinged Doors



### SEMCW-011:

- 24"W x 18"D x 24"H
- (1) Adjustable Shelf
- (2) Hinged Doors



## 30"H CONFIGURATIONS:

### SEMCW-005:

- 18"W x 12"D x 30"H
- (1) Adjustable Shelf
- (1) Hinged Door



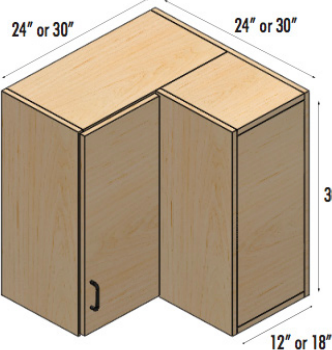
### SEMCW-013:

- 18"W x 18"D x 30"H
- (1) Adjustable Shelf
- (1) Hinged Door



### SEMCW-008:

- 24"W x 12"D x 30"H
- "L" Corner Unit
- (1) Adjustable Shelf
- (1) Hinged Door



### SEMCW-016:

- 30"W x 18"D x 30"H
- "L" Corner Unit
- (1) Adjustable Shelf
- (1) Hinged Door



## STOR-EDGE™ CABINET GROUPINGS

With four different common groupings available, these wall mounted cabinets can be configured to fit your space and solve your storage needs. Choose between several wood or laminate finish colors and apply custom branding to carry your brand throughout your area.



## MEDICAL BASE CABINETS:

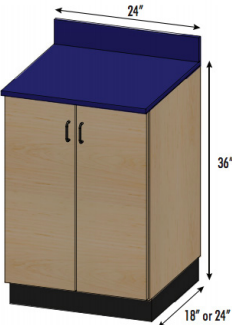
### SEMCB-001:

- 18"W x 18"D x 36"H
- (1) Adjustable Shelf
- (1) Hinged Door



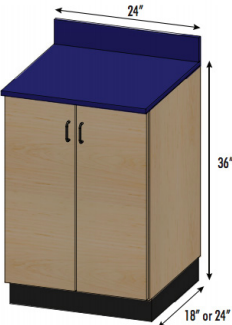
### SEMCB-002:

- 18"W x 24"D x 36"H
- (1) Adjustable Shelf
- (1) Hinged Door



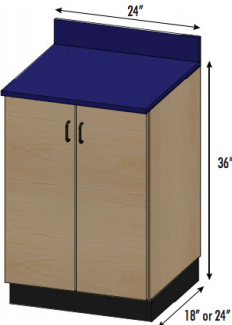
### SEMCB-003:

- 24"W x 18"D x 36"H
- (1) Adjustable Shelf
- (2) Hinged Doors



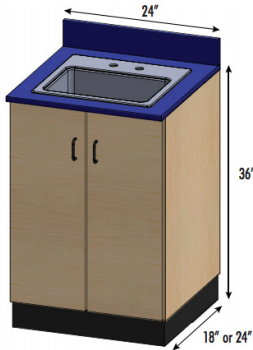
### SEMCB-004:

- 24"W x 24"D x 36"H
- (1) Adjustable Shelf
- (2) Hinged Doors



### SEMCB-003-Sink:

- 24"W x 18"D x 36"H
- (2) Hinged Doors
- Sink Kit (Assembly Required)



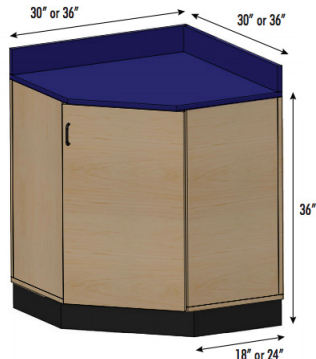
### SEMCB-004-Sink:

- 24"W x 24"D x 36"H
- (2) Hinged Doors
- Sink Kit (Assembly Required)



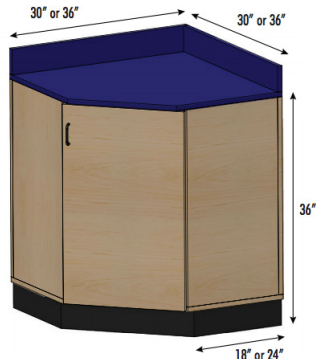
### SEMCB-021:

- 30"W x 18"D x 36"H
- Corner Unit
- (1) Adjustable Shelf
- (1) Hinged Door



### SEMCB-022:

- 36"W x 24"D x 36"H
- Corner Unit
- (1) Adjustable Shelf
- (1) Hinged Door



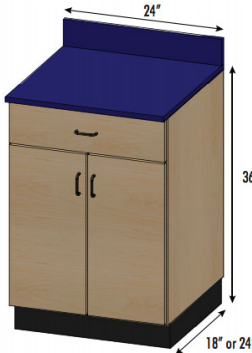
### SEMCB-001-1D:

- 18"W x 18"D x 36"H
- (1) Adjustable Shelf
- (1) Hinged Door
- (1) 5.5" Drawer



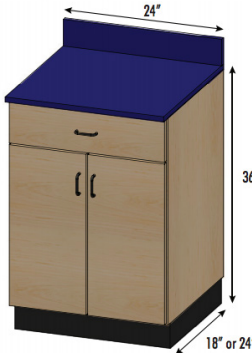
### SEMCB-002-1D:

- 18"W x 24"D x 36"H
- (1) Adjustable Shelf
- (1) Hinged Door
- (1) 5.5" Drawer



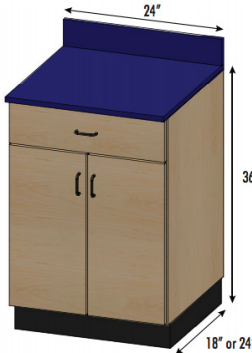
### SEMCB-003-1D:

- 24"W x 18"D x 36"H
- (1) Adjustable Shelf
- (2) Hinged Doors
- (1) 5.5" Drawer



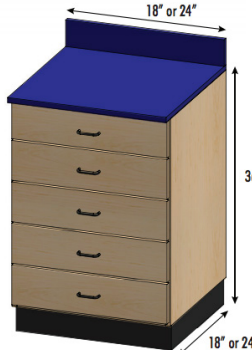
### SEMCB-004-1D:

- 24"W x 24"D x 36"H
- (1) Adjustable Shelf
- (2) Hinged Doors
- (1) 5.5" Drawer



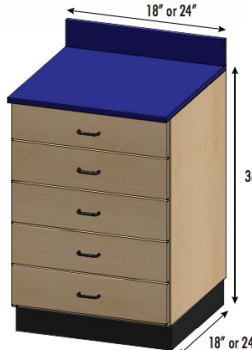
### SEMCB-001-5D:

- 18"W x 18"D x 36"H
- (5) 6" Drawers



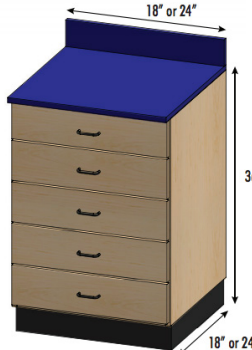
### SEMCB-002-5D:

- 18"W x 24"D x 36"H
- (5) 6" Drawers



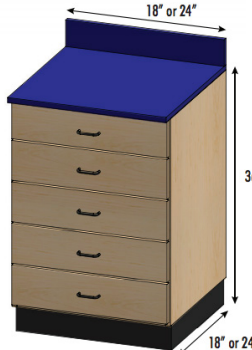
### SEMCB-003-5D:

- 24"W x 18"D x 36"H
- (5) 6" Drawers



### SEMCB-004-5D:

- 24"W x 24"D x 36"H
- (5) 6" Drawers



## CONTINUOUS RUN OPTIONS:

- Continuous countertop
- Continuous toe-kick (laminate or black rubber)



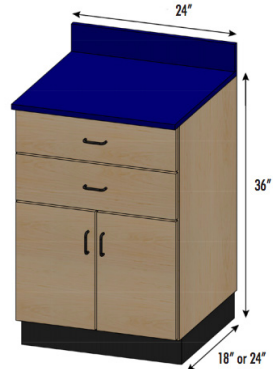
### SEMCB-001-2D:

- 18"W x 18"D x 36"H
- (1) Adjustable Shelf
- (1) Hinged Door
- (2) 5.5" Drawers



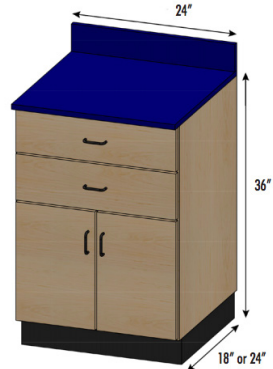
### SEMCB-002-2D:

- 18"W x 24"D x 36"H
- (1) Adjustable Shelf
- (1) Hinged Door
- (2) 5.5" Drawers



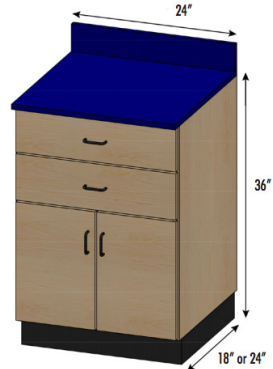
### SEMCB-003-2D:

- 24"W x 18"D x 36"H
- (1) Adjustable Shelf
- (2) Hinged Doors
- (2) 5.5" Drawers



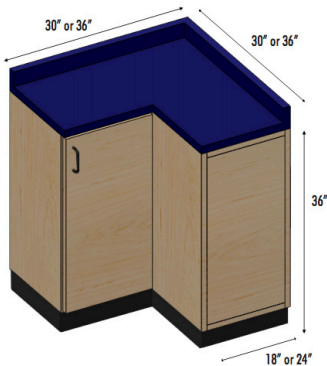
### SEMCB-004-2D:

- 24"W x 24"D x 36"H
- (1) Adjustable Shelf
- (2) Hinged Doors
- (2) 5.5" Drawers



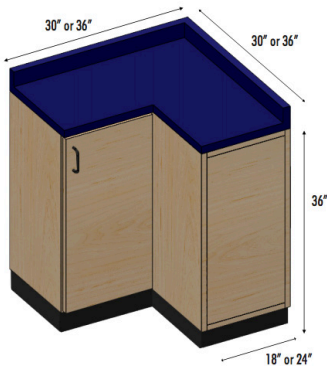
### SEMCB-005:

- 30"W x 18"D x 36"H
- "L" Corner Unit
- (1) Adjustable Shelf
- (1) Hinged Door



### SEMCB-008:

- 36"W x 24"D x 36"H
- "L" Corner Unit
- (1) Adjustable Shelf
- (1) Hinged Door



# EDGE SPORT WOOD MAT TABLES

## FEATURES

- 4 Leg configurations:
  - 4'x6', 4'x7' and 5'x7'
- 6 Leg configurations
  - 4'x7', 5'x7' and 6'x8'
- 19"H
- Load Capacity: 450 lbs. (4 Leg)
- Load Capacity: 700 lbs. (6 Leg)
- Solid hardwood frame
- 3/4" Plywood top
- 1.5" High density foam cushion
- Rounded corners
- Triple-bolted leg assembly



Built for strength and stability during practitioner-assisted rehab, exercise and other treatments, the 4-Leg and 6-Leg Edge Sport Wood Mat Platform Tables are constructed of solid hardwood. Our mat platform comes standard with solid oak or maple hardwood on the base frame, legs and supports; thick plywood top construction; a layer of comfortable 1.5" high-density foam; softly rounded corners; and triple-bolted leg assembly for extra durability.

# WALL MOUNTED MAT TABLES

## FEATURES

- 48" or 60"W x 84"L x 19"H
- Load Capacity: 450 lbs.
- Solid hardwood frame and legs
- 3/4" Plywood top
- 1.5" High density foam flat cushion
- Rounded corners
- Triple-bolted leg assembly
- 10" Depth when folded



WMMT-4884

The Wall Mount Mat Table is a fold out mat table convenient for small spaces. The table is constructed of solid hardwood with a flat 1.5" high density foam cushion with softly rounded corners. A platform attaches to the wall in the back, while the three front legs and cushion fold out away from the wall when needed. The triple-bolted leg assembly adds extra durability.





# Q&A

with ST. ANDREW'S  
EPISCOPAL SCHOOL

**"WE LOVE  
THE 2-SEAT TAPE STATION.**

**WE LOVE  
THE STORAGE OPTIONS.**

**WE LOVE  
THE PERSONALIZATION  
ON THE TABLES."**

**Did your athletic  
training facility  
present any  
challenges when  
it came to treating  
athletes before you  
purchased your  
Athletic Training  
equipment?**

"We only had one taping table before so if both of us were to tape at the same time, one of us had to tape off the treatment table - making for a sore back because of its height. We are extremely pleased with the products & service received from The Athletic Edge!"

**Abby Elliott**  
Athletic Trainer  
St. Andrew's School

# SIDELINE SOLUTIONS

## SINGLE COOLER HYDRATION SMARTCART™



SMCH-5001  
with Full  
Graphics Package

### FEATURES

- 38"L x 24.5"W x 38"H
- Load Capacity: 350 lbs.
- Durable steel construction with powder coat finish
- Cart top has a no drip edge and includes one cooler holder
- Cooler holder accommodates one 10 gallon cooler
- Storage area has a fixed height removable shelf, space to store an ice chest, garbage can and cups
- Garbage can (included) with mounting brackets on one end of the cart
- Locking door tucks away when storage area is in use
- Non-marking, 360° swivel locking casters for indoor use

## SMARTCARTS™



A2706 with options

The SmartCart™ is durable, functional and convenient. With it's heavy-duty 1 1/4" tube steel frame, panel steel construction and ample storage, this product is sure to meet all your mobile taping, evaluation and/or treatment needs.

### FEATURES

- 4', 6' & 6' PRO Load Capacity: 800 lbs.
- 8' & 8' Hydration Load Capacity: 1,000 lbs.
- Drawer and Removable shelf configurations
- Locking, garage style doors
- Full length pass through storage
- Durable steel frame and panel construction with black powder coat
- 360° Rotating heavy duty locking wheels
- Pull handle and 1-1/4" receiver hitch
- Lift back cushion(s)
- 2" High density foam cushion
- Rounded corners
- Graphics package includes graphics on all 4 sides



A2704

## 4' SMARTCART

50"L x 26"W x 36"H



A2706

## 6' SMARTCART

73"L x 26"W x 36"H



A2706-PRO

## 6' PRO SMARTCART

73"L x 32"W x 36"H



A2708

## 8' SMARTCART

97"L x 26"W x 36"H



A2709

## 8' HYDRATION SMARTCART

97"L x 26"W x 36"H

# THE SPORT PORTABLE ALUMINUM TREATMENT TABLE



I9390AE

## FEATURES

- 30"W x 73"L x 24-33"H
- 600 lbs. Load Capacity
- 37 lbs. Table weight
- Lightweight aluminum frame
- Height range 24-33"

- 11-Layer plywood base
- Auto-hold hinge
- Dual end accessory ports, 8" on center
- 2" Firm foam cushion, black upholstery
- Rounded corners
- Removable field feet
- Black carry case
- Face rest and pillow

# PORTABLE SIDELINE TABLE



A2200 with options



- Removable field feet
- Black carry case

## FEATURES

- 30"W x 72"L x 29-36"H
- 600 lbs. Load Capacity
- 45 lbs. Table weight
- Durable powder coat finish
- Height range 29-36"
- Shiatsu Cable-Lock™ system
- 2" Firm foam cushion
- Rounded corners

# WE HAVE THE EDGE.

## ALUMA ELITE PORTABLE WORKSTATION

The Aluma Elite Portable Workstation, with industry leading mobility features, is The Athletic Edge's latest solution for sideline treatment and care.



PW4000

### ALL INCLUDED at no extra charge:

- Choose up to 2 of our 14 available powder coat colors for frame and accent
- Branding included and applied before shipping

## FEATURES

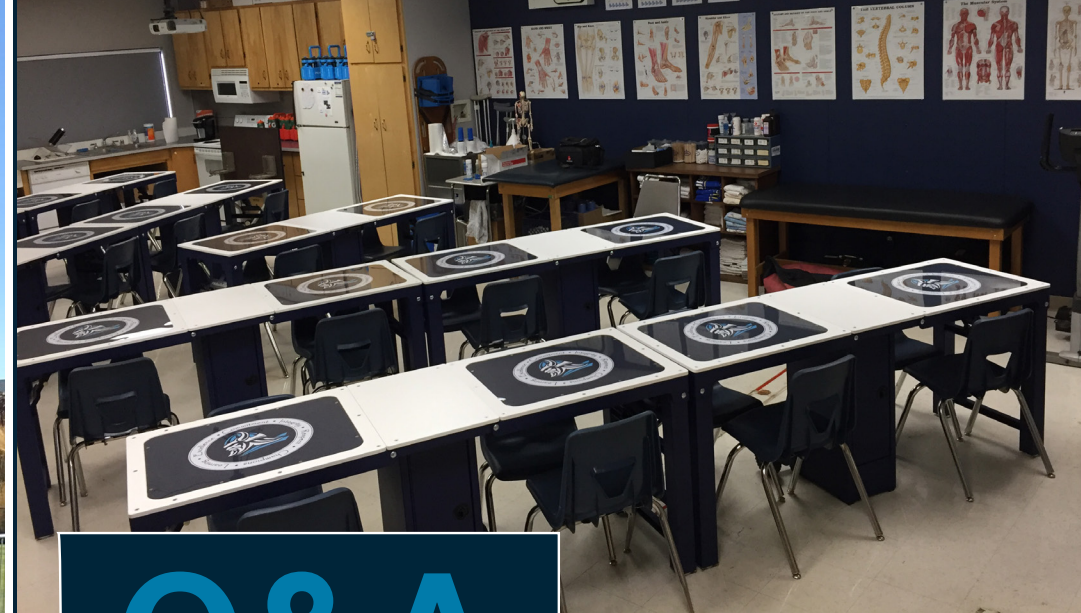
- 24"W x 73"L x 32"H
- 750 lbs. Load Capacity
- Durable aluminum frame
- Textured powder coat finish with optional accent color
- 6" Pneumatic wheels
- Stow-away handle
- Lockable storage cabinet with access from both sides
- Marine grade plastic top
- Graphics Package includes (2) logo panels on top



PW4000-PRO

## Aluma Elite PRO Portable Workstation

Check out pg. 9 for more information!



# Q&A

with PLEASANT VALLEY  
HIGH SCHOOL

**"I AM EXTREMELY HAPPY WITH THE PRODUCT AND SO ARE MY STUDENTS AND ATHLETES. IT REALLY GIVES OUR SPORTS MEDICINE PROGRAM A MORE POLISHED LOOK AND WE HAVE RECEIVED MANY POSITIVE COMMENTS FROM OTHER FACULTY AND ADMINISTRATORS ABOUT HOW NICE THEY LOOK. THE SERVICE I RECEIVED WAS TOP NOTCH."**

## What made you decide to work with The Athletic Edge?

"After searching multiple companies and websites, The Athletic Edge had the perfect kind of tables for what I needed. They are the perfect multi-use table. I can use them for desks in my Sports Medicine classes, I can use them as lab tables for our physical therapy and athletic training units, and I am able to bring them to our games and set them up on our sidelines for injury treatment because they are portable and fold up so easily."

**Patrick Carras**

*Sports Medicine Teacher/  
Program Advisor |  
Pleasant Valley High School*

# ROLLING STOOLS

## FEATURES

- 16"W x 16"D x 16-22"H
- Load Capacity: 300 lbs.
- Padded vinyl seat
- 4" deluxe foam cushion
- Heavy duty casters
- Swivel stool



LOGO



DEBOSS



COLOR EDGE PRINT

## BENCHES, METAL STOOLS AND WOOD STOOLS

also available. See our website: [teamedgeathletics.com](http://teamedgeathletics.com)



# LOGO RUGS

## FEATURES

- Variety of sizes available
- Indoor applications only
- Permanently printed, plush nylon surface
- 100% Nitrile rubber backing for slip/skid resistance
- Fully launderable
- Choose from 150 colors (up to 25 colors per rug)



LOGO RUG



The Athletic Edge's Logo Rugs add the perfect finishing touch to any indoor facility. The rug is constructed with static dissipative 100% nylon carpet bonded to 100% premium rubber for superior grease and oil resistance for years of worry-free service.

# From the Athletic Training Room **TO THE LOCKER ROOM**



## FULLY CUSTOMIZABLE LOCKERS

The Athletic Edge's Lockers are specifically tailored to fit your space, style, and storage needs. We will work directly with you to custom design your lockers to look, feel and function as you wish. Choose which high-quality materials, cutting-edge features and custom-branding options to include, and we will bring your locker vision to reality.

Contact us for a **FREE** custom mockup - 800.743.7738



[AELockers.com](http://AELockers.com)

# SHOP OUR OTHER BRANDS



OUR  
BRANDS:



**Providing solutions  
and value to  
multiple healthcare  
markets.**

- Athletic Training
- Lockers
- Chiropractic
- Massage
- Physical Therapy
- Epidural Positioning Device (EPD)

Pivotal Health Solutions is the nation's leader in offering beautifully designed, quality-manufactured products for the complementary health care field. Chiropractors, massage therapists, athletic trainers, anesthesiologists, physical therapists and more rely on our extensive line of products to launch and build their practices.





## APOLLO DESKTOP LASER SYSTEM

AP2-DT-5000-C

Built for the busy office and clinic, our two-channel Apollo Desktop Laser Unit offers both convenience and power: With two probes, clinicians can work on two patients at the same time or two areas on the same patient.

### 2 Channel Desktop with choice of 3000, 4000 or 5000mW probe

9"W x 11.25"D x 4.5"H

#### FEATURES:

- Heavy-duty construction for office and clinic environments
- Probe holders on both sides of the unit that can accommodate two probes and both right and left handed practitioners
- Elevated face for easy viewing and control



## FMST TOOLS

Fluid Motion Soft Tissue Tools are the soft tissue mobilization tools that can take myofascial manipulation and mobilization to the next level in your practice. The design of the two tools available enables you to work over all surfaces of the body quickly and easily. The tools help reduce scar tissue problems from old injuries/surgeries and achieve greater results with pain control, joint and muscle flexibility.

#### FEATURES:

- Custom molded, non-slip thumb grips create maximum angular pressure without over use by the therapist.
- Ambidextrous design: no more switching through multiple tools to find the right edge or angle. Both tools are designed to be used on both sides and on every surface for increased compatibility of treatment on multiple body areas.

## BEYOND THE BASICS

Every Athletic Edge product is made to help your facility succeed. From our treatment tables to our SmartCarts, Hi-Lo tables and modality carts, our **product innovation doesn't end there.**



**Be the Difference.**  
pivotalhealthsolutions.com

# UPHOLSTERY COLORS

12 standard upholstery colors for athletic training room equipment

\* Excludes the Essential Wood Treatment Table

\* Not applicable for Color Edge Print



# COLORS & CUSTOM BRANDING

## LOGO SLIP COVER

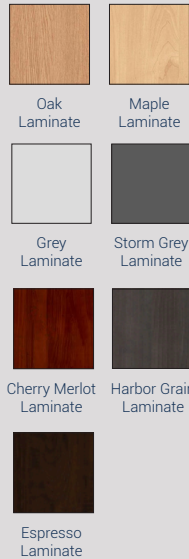
**(LOGO COVER)** Personalize any treatment table, treatment cabinet or taping station with your school/organization logo. The logo slip cover is a cost effective, removable cover that slips over the lift back/tilt cushion of your table, cabinet or taping station. Logo slip covers are also easy to replace if your school or organization updates logos or colors.



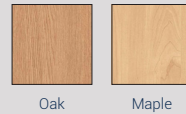
# STANDARD WOOD/LAMINATE CHOICES

Available on athletic training room equipment.

## LAMINATE COLORS



## WOOD OPTIONS



## CUSTOM STAIN OPTIONS



## DEBOSSED LOGO

**(LOGO DB)** A debossed logo is available on flat or lift back treatment tables, treatment cabinets and taping stations. During the debossing process, a metal die is pressed down into the upholstery of the cushion leaving an impression of your logo. The debossed logo is a popular branding option that creates a classic look in any space. There is a one time fee for the metal die used to deboss the logo, which can be used on future Athletic Edge equipment orders.



## COLOR EDGE PRINT LOGO

**(LOGO CP)** Color Edge Print is the newest Athletic Edge cushion branding option. The Color Edge Print logo is printed directly onto your upholstered cushion. There are no limits on the number of colors printed in your logo. Add color and team spirit to your space by adding a Color Edge Print logo to your treatment table, treatment cabinet or taping station.



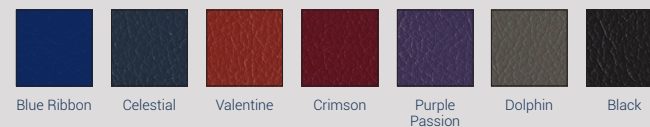
# POWDER COAT COLORS

14 available powder coat colors for LAST tables, Thera-P tables, SmartCarts, and Aluma Elite equipment.



## COLOR EDGE PRINT UPHOLSTERY COLORS

7 standard upholstery colors for athletic training room equipment with Color Edge Print Logo option.





# Q&A

with GRAND OAKS  
HIGH SCHOOL

The Athletic Edge worked  
with Grand Oaks High  
School to design their first  
athletic training room.

## #WEHAVETHEEDGE



Aluma Elite  
Treatment Table



4' SmartCart



Aluma Elite  
Modality Cart



Logo Rug

## What are some of your favorite features of your new Athletic Edge equipment?

The athletic tables with the adjustable backs are great. The athletes really like being able to adjust them. The split legs that I also received with the adjustable backs come in handy when doing recovery pumps and/or ice and stim. The taping tables are a really nice touch with the ability to hold boxes under it and still have tape available to the reach above. The rugs are amazing, and you can customize them. We just got the modality cart in and love the size so we can hold more than one machine on it.

## Would you recommend The Athletic Edge to others?

In a heartbeat! Great quality - I have had athletic trainers come in and see the quality and the extra touches that really made it easy to go with The Athletic Edge. I am hoping that will make them decide to choose The Athletic Edge as well. The custom work that The Athletic Edge puts in to each product stands out the most!

**Todd Matz**

*Athletic Trainer* | Grand Oaks High School

## REQUEST YOUR FREE CUSTOM MOCKUP TODAY:

800.743.7738



[TEAMEDGEATHLETICS.COM](http://TEAMEDGEATHLETICS.COM)



The  
**ATHLETIC  
EDGE**

800.743.7738

[TEAMEDGEATHLETICS.COM](http://TEAMEDGEATHLETICS.COM)