

NAME: _____

PHONE: _____

SCHOOL/ORGANIZATION: _____

E-MAIL: _____

DEALER/REP: _____

SALES REP: _____ QUOTE: _____



WWW.TEAMEDGEATHLETICS.COM
800-743-7738 • FAX: 605-882-8398

STOR-EDGE™ MEDICAL BASE CABINETS

STANDARD FEATURES:

- Available in wood or laminate finishes
- (1) Adjustable shelf in each doored cabinet
(Not available in sink cabinets)
- 110° Euro hinges on doors
- Full extension drawers glides
- Black wire pull handles
- Right or left hinges available on single door cabinets
- High pressure laminate countertop with backsplash
- Black rubber toe-kick plate
- Some assembly required (Backsplash ships not attached)



Our fully modular, cost effective Stor-Edge Medical Base Cabinet line is functional, durable, aesthetically pleasing and designed for multiple applications. All cabinets are handcrafted in the US and are available in several wood or laminate choices. Choose to apply custom branding to carry your brand throughout your treatment area.

Our Stor-Edge Medical Base cabinets are designed for use with our Stor-Edge Medical Wall cabinets. Pair multiple cabinets together or ask about custom-built options for a fully functional treatment space. Continuous countertop and toe kick available for a run of base cabinets. Please supply a room layout when ordering.

Cabinets come standard with the same color laminate on the outside and inside of bases, as well as the doors and drawer fronts. Custom color options are available upon request. Mounting hardware not included.

.....





STOR-EDGE™ MEDICAL BASE CABINETS

CABINET CONFIGURATIONS:

☐ SEMCB-001

- 18"W x 18"D x 36"H
- (1) Adjustable Shelf
- (1) Hinged Door

Qty _____

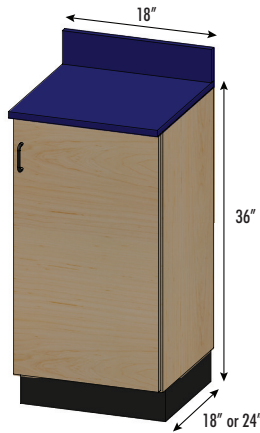
☐ SEMCB-002

- 18"W x 24"D x 36"H
- (1) Adjustable Shelf
- (1) Hinged Door

Qty _____

☐ Right Hinged Door

☐ Left Hinged Door



☐ SEMCB-003

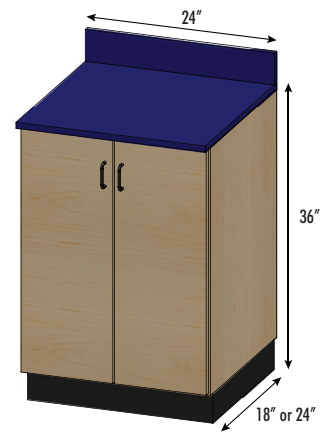
- 24"W x 18"D x 36"H
- (1) Adjustable Shelf
- (2) Hinged Doors

Qty _____

☐ SEMCB-004

- 24"W x 24"D x 36"H
- (1) Adjustable Shelf
- (2) Hinged Doors

Qty _____



☐ SEMCB-001-1D

- 18"W x 18"D x 36"H
- (1) Adjustable Shelf
- (1) Hinged Door
- (1) 5.5" Drawer

Qty _____

☐ SEMCB-002-1D

- 18"W x 24"D x 36"H
- (1) Adjustable Shelf
- (1) Hinged Door
- (1) 5.5" Drawer

Qty _____

☐ Right Hinged Door

☐ Left Hinged Door



☐ SEMCB-003-1D

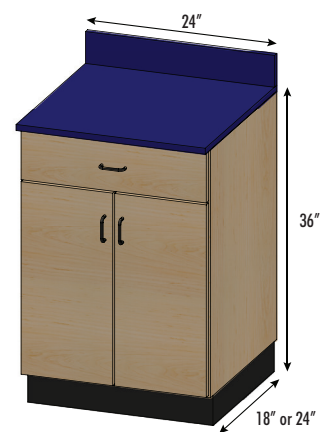
- 24"W x 18"D x 36"H
- (1) Adjustable Shelf
- (2) Hinged Doors
- (1) 5.5" Drawer

Qty _____

☐ SEMCB-004-1D

- 24"W x 24"D x 36"H
- (1) Adjustable Shelf
- (2) Hinged Doors
- (1) 5.5" Drawer

Qty _____



☐ SEMCB-001-2D

- 18"W x 18"D x 36"H
- (1) Adjustable Shelf
- (1) Hinged Door
- (2) 5.5" Drawers

Qty _____

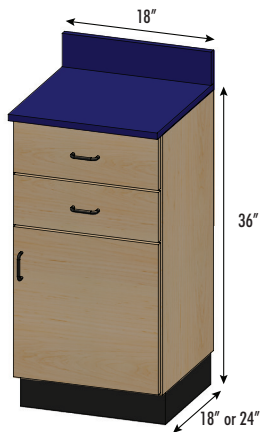
☐ SEMCB-002-2D

- 18"W x 24"D x 36"H
- (1) Adjustable Shelf
- (1) Hinged Door
- (2) 5.5" Drawers

Qty _____

☐ Right Hinged Door

☐ Left Hinged Door



☐ SEMCB-003-2D

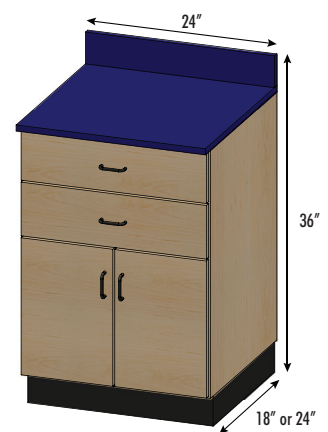
- 24"W x 18"D x 36"H
- (1) Adjustable Shelf
- (2) Hinged Doors
- (2) 5.5" Drawers

Qty _____

☐ SEMCB-004-2D

- 24"W x 24"D x 36"H
- (1) Adjustable Shelf
- (2) Hinged Doors
- (2) 5.5" Drawers

Qty _____





STOR-EDGE™ MEDICAL BASE CABINETS

CABINET CONFIGURATIONS:

- ☐ **SEMCB-003-Sink**
- 24"W x 18"D x 36"H
 - (2) Hinged Doors
 - Sink

Qty _____

- ☐ **SEMCB-004-Sink**
- 24"W x 24"D x 36"H
 - (2) Hinged Doors
 - Sink

Qty _____



- ☐ **SEMCB-001-5D**
- 18"W x 18"D x 36"H
 - (5) 6" Drawers

Qty _____

- ☐ **SEMCB-002-5D**
- 18"W x 24"D x 36"H
 - (5) 6" Drawers

Qty _____

- ☐ **SEMCB-003-5D**
- 24"W x 18"D x 36"H
 - (5) 6" Drawers

Qty _____

- ☐ **SEMCB-004-5D**
- 24"W x 24"D x 36"H
 - (5) 6" Drawers

Qty _____

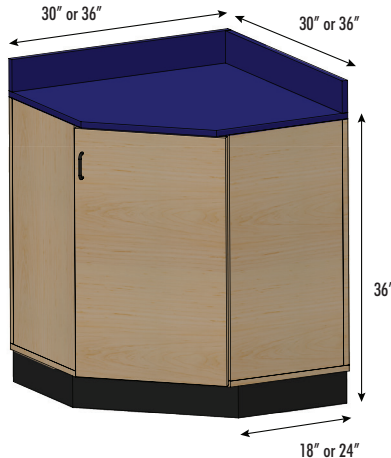


- ☐ **SEMCB-005**
- 30"W x 18"D x 36"H
 - Corner Unit
 - (1) Adjustable Shelf
 - (1) Hinged Door

Qty _____

- ☐ **SEMCB-008**
- 36"W x 24"D x 36"H
 - Corner Unit
 - (1) Adjustable Shelf
 - (1) Hinged Door

Qty _____



- ☐ **Right Hinged Door**
- ☐ **Left Hinged Door**

CONTINUOUS RUN OPTIONS:

- ☐ **Continuous Counter Top**

** Please supply a Floor Plan/Room layout showing cabinets.

- ☐ **Continuous Toe Kick**

- ☐ Laminate Face Toe Kick
- ☐ Black Rubber Toe Kick

Cabinets ship individually without countertop installed.






Assembly and installation required on site.







STOR-EDGE™ MEDICAL BASE CABINETS

STANDARD LAMINATE CHOICES:

- | | |
|--|--|
| <input type="checkbox"/>  Oak | <input type="checkbox"/>  Grey |
| <input type="checkbox"/>  Maple | <input type="checkbox"/>  Storm Grey |
| <input type="checkbox"/>  Cherry | |








STANDARD WOOD CHOICES:

- | |
|---|
| <input type="checkbox"/>  Oak |
| <input type="checkbox"/>  Maple |

WOOD STAIN OPTION:

- ☐ **Mod-Stain**
Custom Wood Stain Color _____

STANDARD COUNTERTOP CHOICES:

- | | | | |
|--|---|---|--|
| <input type="checkbox"/>  Burgundy | <input type="checkbox"/>  Brittany Blue | <input type="checkbox"/>  Navy Blue | <input type="checkbox"/>  Royal Blue |
| <input type="checkbox"/>  Green | <input type="checkbox"/>  Beige | <input type="checkbox"/>  Black | |

CUSTOM BRANDING:

- ☐ **Decal Custom Small**
Small Logo Decal
6"W x 6"H



- ☐ **Decal Custom Large**
Large Logo Decal
12"W x 12"H



OPTIONS:

- ☐ **Lock1004** - Lock on Single Door
- ☐ **Lock Double Door** - Lock on Double Doors
- ☐ **Lock1001** - Lock on Drawer
- ☐ **TSFO-FHDR** - Flush Mount Handles on Drawers
- ☐ **TSFO-FHD** - Flush Mount Handles on Doors
- ☐ **SEM CB-SS** - Stainless Steel Sink
- ☐ **SEM CB-BF** - Base Filler (Cut to Size)
- ☐ **SEM CB-EP** - Base End Panel