

# Arc

## ADVANCED RETAIL CENTER

### THE ADVANTAGES

- Single sign-on portal
- Easily export and work with key data
- Product images provide quick identification
- Visualize critical data on products and promotions with crisp, clear graphics
- Access key features on any handheld device on Arc Mobile, which is optimized for portability
- Insights that enrich the customer shopping experience
- Frictionless transitions among applications



### STREAMLINE WORK AND ENRICH SERVICE POTENTIAL

Arc is a single sign-on, browser-based retail application suite you can access anywhere with an internet connection. Arc lets you handle back-office tasks at the front of the store, check customer information from the floor, or keep sales data at your fingertips while performing back-office tasks. You can conduct business wherever you need to be. The MBS-hosted solution keeps information secure and permits full portability. You can access Arc data from any Internet-connected device with a browser.

Versatile cloud-based applications are designed specifically for the complex needs of collegiate retail. There's no need to download clunky software, remember multiple passwords or interrupt your workflow to switch from one application to another. Sign in once via the Arc portal. Gain immediate access to the full suite of collegiate retail tools.

Arc's personalization features let you control how you and your associates interact with the suite. Administrators can assign permissions that determine which applications employees can access. Users can also establish preferences. For instance, they can arrange or remove columns on a screen depending on their needs. This ensures the most pertinent information is displayed and it eliminates distractions.

## KEY FEATURES

### Access key data and tools easily — anywhere

Conduct business and access store data from any device with an internet connection. The secure MBS-hosted solution eliminates the need for complicated VPNs or time-consuming firewalls, boosting efficiency and streamlining complex tasks.

### Single sign-on

Arc puts your store's applications and accompanying data in one easily accessed portal. This experience allows you to efficiently make use of all your pertinent programs and information without leaving your browser.

### Arc Mobile

Access key Arc features with a mobile suite optimized for handheld devices. With Arc Mobile, you can provide customers with needed services and information from anywhere in the store. The responsive design adapts to any screen or orientation.

The applications empower associates with mobile access to textbooks, accounting, inventory, receiving and customer information. Because it's also browser-based, you can access Arc Mobile wherever you have an internet connection. Just add the word "mobile" to your current Arc URL and you're ready to go.

### Simple, versatile print functions

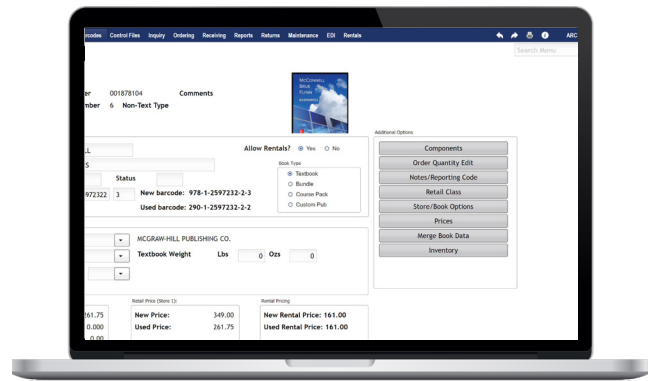
Versatile printing options Easily choose from a variety of document output options.

### Message center

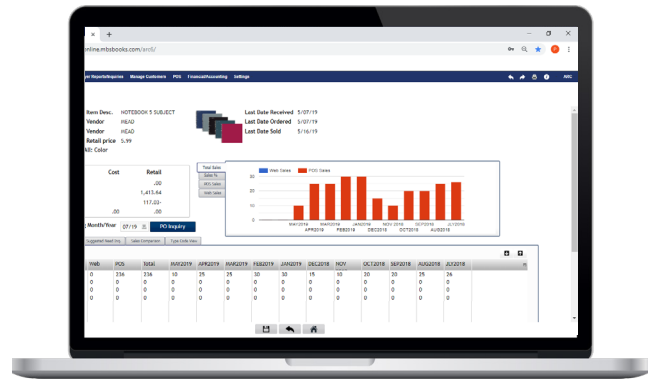
As soon as you log in to the Arc portal, one of the first things you'll see alongside the navigation menu is the Message Center. This allows MBS to easily communicate important information to Arc users so they are up-to-date at all times.

### Data visualization

Rows and columns of data can't always tell the full story. Arc supplements data with graphs and charts that allow you to absorb critical information quickly. The program automatically generates pie charts, histograms and other graphics alongside your data, creating actionable insights from raw numbers.



*Arc portal*



*Arc merchandise items*

### User personalization

In addition to individual profiles, Arc allows for easy personalization within each user's view. The data tables are filled with sortable, removable rows and columns so you can manipulate the contained information as you see fit without affecting other users.

### Easy exporting

Export pertinent data to a spreadsheet program where it can be searched, sorted and adjusted according to your needs.

### Secure hosted data

All the data housed within Arc's applications is hosted on MBS servers in a secure data center. We handle the equipment, data backups, security and much more, so your store can save time and money while concentrating on your goals.