



ISE 2019

Contents

Click on category title to view winners

YES.

NVX IS PIXEL PERFECT EVERY TIME.

NEW | **DM NVX™**. The only network AV solution with **Pixel Perfect Processing** for a perfect picture every time. **Crestron.com/NVX**



Any network, any ask,
NVX says yes.



All brand names, product names, and trademarks are the property of their respective owners. Certain trademarks, registered trademarks, and trade names may be used in this document to refer to either the entities claiming the marks and names or their products. Crestron disclaims any proprietary interest in the marks and names of others. Crestron is not responsible for errors in typography or photography. ©2018 Crestron Electronics, Inc.

Crestron 2019 Integration Awards Winners



The Crestron EMEA Integration Awards are a celebration of the finest projects featuring Crestron technology. Now in its 12th year, we are immensely proud at how the annual awards process has grown to become a true industry accolade. Winning a Crestron EMEA Integration Award is confirmation of how innovation, excellence and creativity in using Crestron technology can enhance lives.

Every year, the quality of the entries increases, and this is testament to the network of leading partners and service providers that choose Crestron to deliver exciting and forward-thinking projects.

We have also recognised 2019 as another record-breaking year for the EMEA Integration Awards, featuring more category entries than ever before, with a total of 147 entries from 19 countries!

From speaking with our industry partners, we know the immense pride and recognition felt by winners in receiving an award at ISE - the biggest annual event for this thriving industry. To be recognised for the hard work is a great achievement.

Congratulations to the winners of the 2019 Integration Awards!

Yours,

Robin van Meeuwen
CEO Technological Innovations Group

Meet the Judges

Our esteemed judges are rich in knowledge and expertise from the worlds of residential and commercial technology, bringing a great mix of experience to this impressive panel. They were wowed by the quality of this year's entries and had a tough job to select our Integration Awards 2019 winners!

71

INTEGRATORS

19

COUNTRIES

15

CATEGORIES

147

ENTRIES RECEIVED



Rob Scott

Founder and Publisher at UC Today

Rob is the founder of UC Today, an online publisher of the latest news, reviews and opinion for the Unified Communications and Collaboration industry. The platform is designed for industry professionals looking for the latest news and strategic insight, in addition to specialist articles on trending products.

"It was an honour to be involved in the Crestron EMEA Integration Awards 2019, the technology industry never fails to impress us year on year and I thoroughly enjoyed the experience of seeing some of the best Crestron projects of the moment. The high quality of entries made this a challenging awards scheme to judge – congratulations to the well-deserving winners."



Karen Stylianides

Editor at Grand Designs magazine

Karen is an editor with more than 20 years' experience in the interiors, renovation and home improvement sector. She became editor of Grand Designs magazine just over a year ago, having previously been deputy editor at House Beautiful for ten years. Karen was looking for outstanding projects that effectively and seamlessly integrate technology with good design.

"Home technology is of great interest to readers of Grand Designs magazine, and it was a great pleasure to see new and innovative installations that enhance a property and have a positive impact on people's lives. I have my eye on some winning projects that would easily fit within the pages of the publication – they were that good!"

Owen Ellis

Chairman of the AV User Group

Owen is an influential figure in the AV industry with a 30-year background in AV. He became a member of the AV User Group in 2004 whilst in his global Multimedia role at Morgan Stanley investment bank and took up the position of Chairman of the Group in 2010. Since then Owen has overseen the extension of the Group, which now operates in New York and Hong Kong.

"I've been an AV user for over 17 years, so I was looking for more than just the innovative use of Crestron technologies, but projects that exceeded client expectations and requirement. I was impressed by projects that carefully considered the overall user experience and delivered unexpected benefits - these were stand-out factors for me."



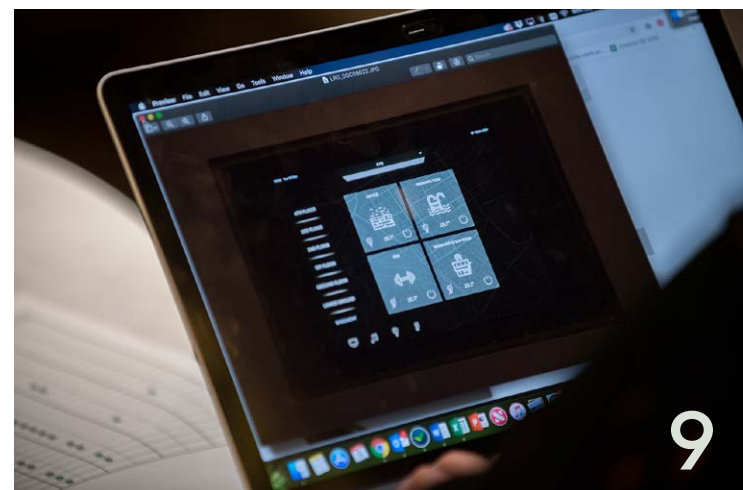
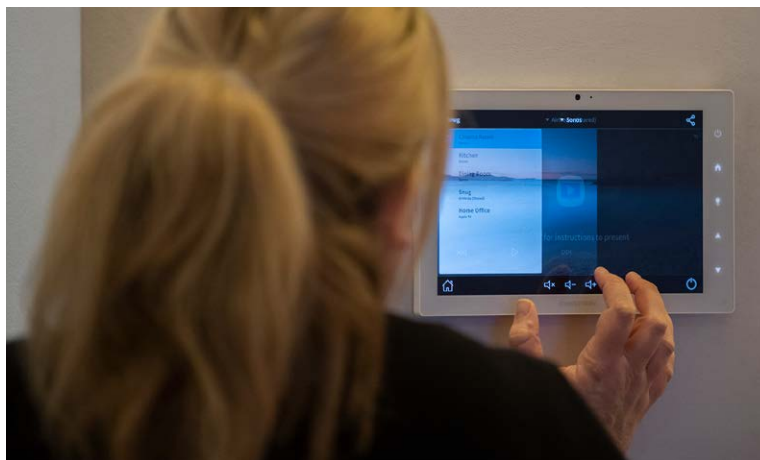
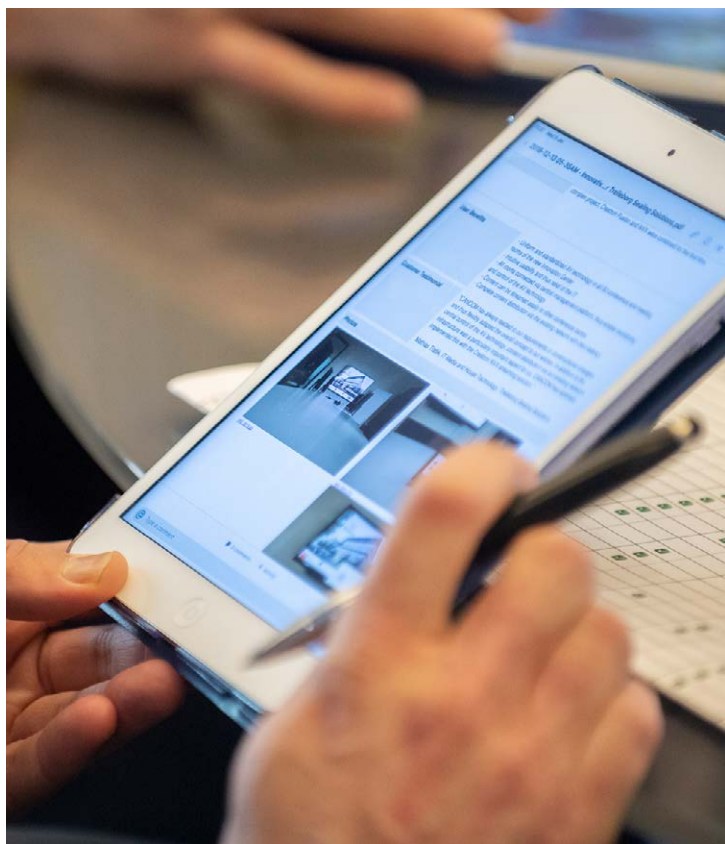
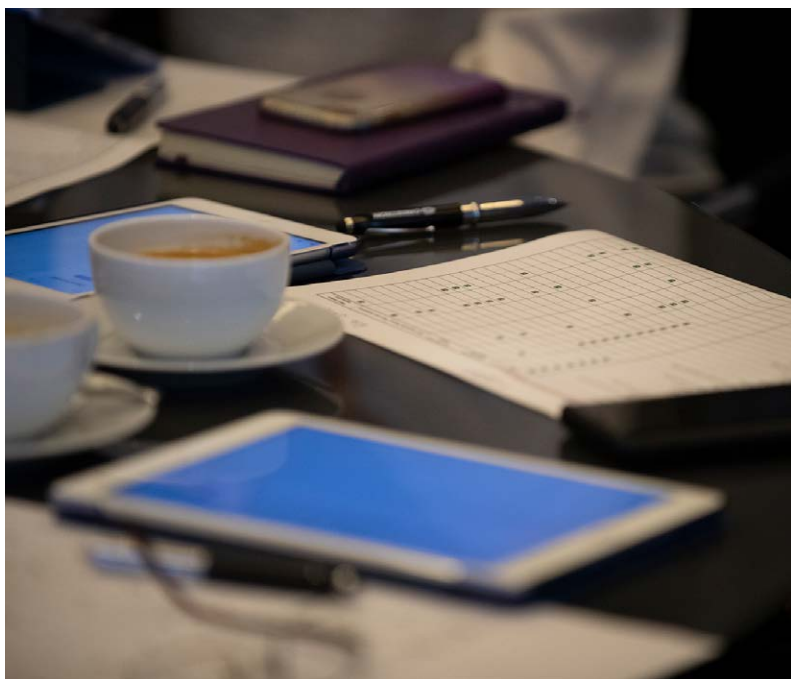
Zoe Dare Hall

Freelance writer

Award-winning writer Zoe specialises in the high-end luxury sector, contributing regularly to the Daily Telegraph, Sunday Times and several luxury magazines. A pivotal voice in the global property market, Zoe was an excellent addition to this year's panel and as a professional in the premium property and design field, was impressed with the entries showcasing state-of-the-art smart technology.

"Smart technology is increasingly becoming a must in high-end homes. The challenge is to make it sophisticated, clever and versatile, to control all aspects of the home, while also being intuitive to use. The winning projects combine these factors and are hugely impressive."







**BEST
CORPORATE
APPLICATION
COMMERCIAL**

Avidex SA AGEMAR SA

Greece

This complex corporate project caught the attention of the judges for both the extensive use of Crestron technology but also the successful collaboration between the integrator, architect and engineering team to ensure the project exceeded client expectations.

AGEMAR SA is a member of the Angelicoussis Shipping Group, one of the biggest maritime companies in the world. In deciding to relocate to a new headquarters designed by Sparch Sakellariadou/Papanikolaou Architects, the company required a robust and high-performance smart technology solution.

The building itself is a masterpiece of design and provided many challenges for integrator AVIDEX SA, who were awarded the contract to supply and install all audio, video, conferencing, room booking and entertainment systems to the vast new building.

AVIDEX SA opted to integrate the latest Crestron solutions in order to provide a powerful and reliable AV infrastructure, with seamless and uniform control interfaces for the best user experience. Crestron was used in almost every space of the building, which included twenty meeting rooms, two crisis rooms, two training rooms, a board room and an auditorium. Multiple Crestron solutions were integrated to manage the various technologies, including DigitalMedia™ signal switching and distribution, AirMedia wireless technology, AVIA DSPs, Saros speakers and sound bars, FlipTops, room booking, Fusion software, the latest 3-Series Control Systems, processors and touch screens.

Each meeting room is managed centrally via Crestron's Fusion platform and bookings are made and controlled from Crestron TSS-752 touch screens located on entry.



The project was completed in a very short time scale of just 6 months and was delivered on budget whilst exceeding the expectations of the client. AGEMAR SA employees admit they can now focus on their work and presentations, rather than the

technicalities involved before and between each meeting – contributing to better meetings and more productive collaboration. IT/AV facility managers also feel more secure and confident that the solution will deliver every time with minimum support calls.



Visavvi

University of the West of Scotland

United Kingdom



In a closely contested category, the judges felt this extensive project came out on top. The brand-new, ultra-modern University of the West of Scotland campus in Lanarkshire offers a truly innovative, dynamic and collaborative student experience. Featuring over 100 DM NVX units, the project by Visavvi is the largest single Higher Education deployment of DM NVX in Europe, perfectly showcasing the art of the possible with AV over IP.

Facilities at the new £110m campus include a 236-seat auditorium, a 60-seat boardroom, a 128-capacity conferencing space, 65 learning spaces and multiple huddle zones. All the areas are aligned with Crestron control technology to achieve a forward-thinking, integrated learning environment.

The 65 learning spaces were specifically designed to promote skills most valued by industries, to best prepare the students for life after university. Each learning suite has multiple collaboration stations seating 5 students. The stations are equipped with Crestron control panels providing intuitive power and source selection. DM NVX controls and distributes content to a variety of large format displays, video walls and projection to support multiple huddle spaces, collaborative learning environments, auditoria and social areas across the entire campus, delivering a truly flexible collaboration campus of the future.

Using DM NVX, each group of students can select which screen is shared on their main group monitor. The lecturer has master control of all group content. Both students and lecturers benefit from the full flexibility offered by the DM NVX deployment.

To ensure rapid adoption of the control systems, Visavvi used the programmable Crestron user interface to design an intuitive layout that mirrored an existing UI used across other campus buildings.

Judges were particularly impressed with the scale of the project, and the use of Crestron technology to create a truly future-proofed interactive learning experience.





BEST
APPLICATION
OF DM NVX
COMMERCIAL

Langard s.r.o.

National Museum Prague

Czech Republic

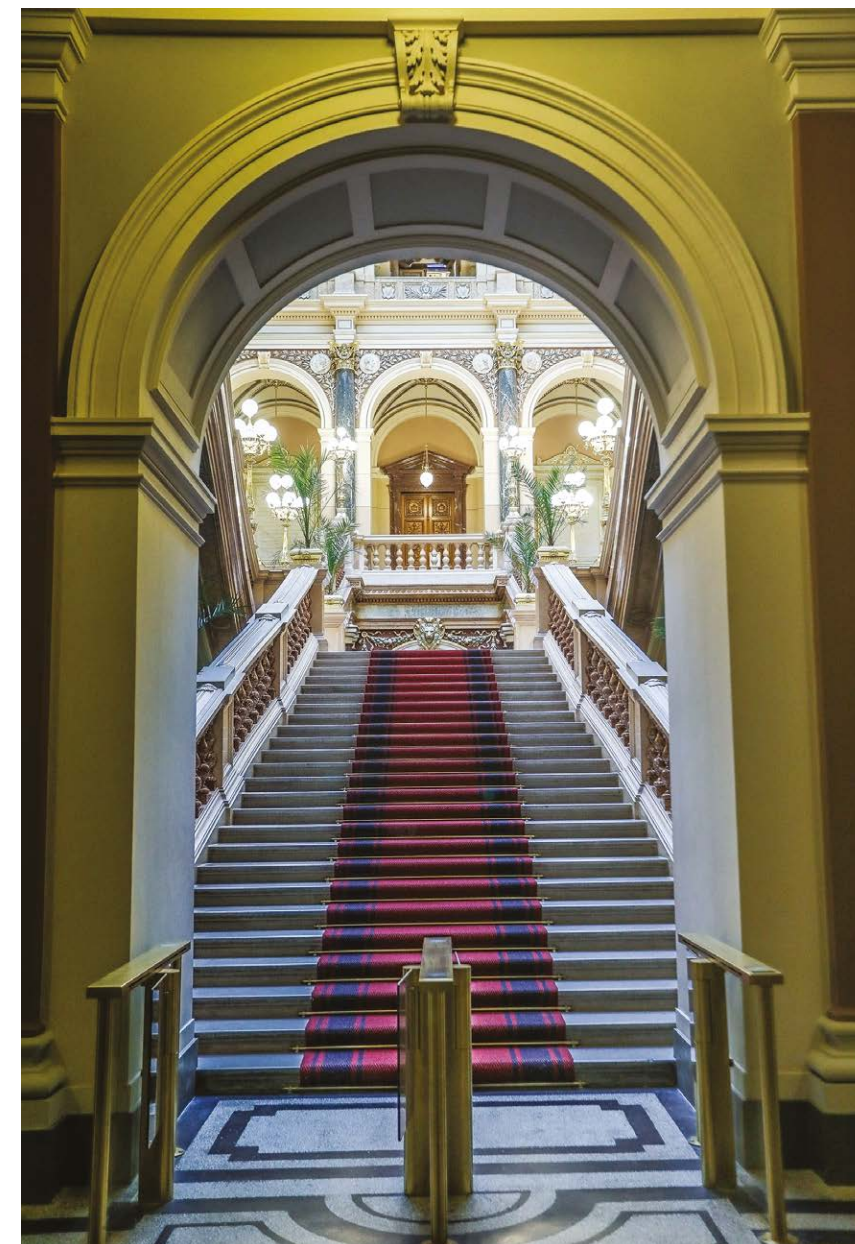
The historic building housing the National Museum in the center of Prague has been listed as part of the country's national heritage since 1962. Loved by the Czech nation, admired by foreign visitors, and deeply linked to modern Czech history, the building has become as important as the National Museum Institution itself. So it was of significant importance when a major reconstruction was planned to be completed and opened by 28 October 2018 – the day of the 100th anniversary of the Czech Republic.

The judges felt this project by Langard captured the essence of DM NVX, and that the completed installation delivered a technically sophisticated solution that perfectly suited the historical context in which it operates. Langard's task was to create a system which was centred on high performance and ease of use, and which did not detract from the building itself. In addition to AV distribution throughout the museum, lighting control, building management and control for temporary exhibitions had to be included.

Thanks to DM NVX technology, the system ensures smooth transmission of AV signals from overhead into individual exhibition areas. In addition to displaying AV content for the exposition, it's important to be able to view additional content, such as information in the event of a fire, opening time information, and so on. At the same time, it was important to control each AV component.

This extensive project features 192 AV sources in the overhead space and 192 displays in each room of the building, where the monitors themselves are part of the exhibits. The use of DM NVX and its IP transfer technology has provided a number of benefits including practically endless possibilities for system expansion, minimum delay in switching content on the screens, the ability to distribute across parts or the entire network, central component management and support services.

Installation was very smooth thanks to DM NVX, which meant that the setting for total AV distribution needed just 48 minutes. DM NVX is used not only for AV content distribution but also for USB HID transmission. USB HID is used for content for the touch screens information kiosks throughout the Museum.



HIGHLY COMMENDED:
FHT TEAM KFT. WITH BUDAPEST AIRPORT (HUNGARY)



**MOST
UNIQUE
APPLICATION
COMMERCIAL**

Triac

Nando's

South Africa

Founded in 1987 in South Africa, Nando's now operates over 1500 outlets in 25 countries. The brand is renowned for innovative thinking and was looking for a way to take casual dining to the next level recognizing that lighting can set an inviting and relaxing vibe in any space.

Triac's solution for Nando's South Africa was the judges' choice in this category, not only because of the unique aspects, but also because of the significant adoption of the solution – with 24 outlets already completed and another 54 planned – a great example of how the Crestron Pyng solution and Triac's design are delivering real benefit to this restaurant chain. Each venue has a Crestron Pyng hub that controls all the Crestron lighting and distributed audio through the restaurant.

Unique to this project is Nando's initiative to showcase local artwork of up and coming artists and lighting plays a big part. They also wanted to create an audio brand standard for all their restaurants, integrated the same way as the lighting.

Triac completely answered the client's brief and has delivered a system to provide standardisation of lighting experience throughout the restaurant chain, that is centrally controlled, monitored and managed via the cloud. One of the unique features of the solution is that everything is automated, managed and controlled from HQ.

Automated lighting scene selection is dependent on the time of day and helps to create a warm and inviting atmosphere as well as ensures that the restaurants are more energy efficient. Distributed audio has been integrated to set different audio levels in various zones that change automatically during the day. The system also provides the ability to expand and add thermostats and monitor everything the restaurant requires centrally.

During setup time the restaurant's audio is elevated and Nando's streamed music plays throughout the restaurant to fire up staff and get them amped for the day; at the same time all the lighting is set to full, so all necessary setup activities can be performed.

As the day goes on, the system automatically recalls different scenes to accommodate for the environment changes, to ensure a consistent dining experience is achieved. At the end of the service, all light come on 100% so cleaning and necessary tasks can be completed; as the restaurant manager closes up, all lighting is turned off, audio muted, and security engaged.





BEST
HOSPITALITY
PROJECT
COMMERCIAL

HENRI Lutetia Rive Gauche, Paris

France



The famous 5-star Lutetia Hotel is an iconic Parisian Art Deco luxury hotel, built in 1910 to welcome important clients of Le Bon Marché – the first high-end Parisian department store – and is a magnificent representation of the beginning of Art Deco. During its recent renovation, HENRI undertook the automation installation in the 184 rooms and suites and designed a system for lighting management, control of motorized curtains, temperature management as well as the in-room AV.

Each of the 184 Rooms and Suites is equipped with at least five TSW-560 touch screens: One at the entrance of the room, one at the entrance of the bedroom, one on each bedside table and one for the bathroom. HENRI's solutions integrate the doorbell button, "Do Not Disturb" and "Make Up Room" modes. The doorbell triggers a sound on the touch screens, blocked when in DND mode, and the mode selected by the client changes the LED feedback on the outdoor display, indicating if the room is ready for housekeeping.

For total integration and to provide a very simple system for guests and staff alike, the Crestron system is also used for temperature control and is integrated into the hotel BMS. Window opening contacts are linked to the processor in order to manage HVAC and block the curtain tracks control. The door opening contact is also processed in order to launch the "Welcome scenario" when guests' first arrive, and also turn on the entrance touch screen, part of the small but significant details that make the difference in this beautiful project.

A Crestron Fusion server allows the Crestron solution to communicate with the hotel PMS in order to get the check-in and check-out information. It is also used to display room status for staff supervision, especially the "Do Not Disturb" and "Make Up Room" backups used for the cleaning team. Finally, a tracking system allows the hotel management to obtain data in order to better understand their client's habits and make the necessary modifications to improve the service.

Some people will stay in the hotel for only one night and must understand the technology right away. As such, HENRI designed the touch screens to display a single page, with most of the controls represented with pictograms instead of text to prevent misunderstandings due to language barriers.



Hotel staff have complete control over the system through the Crestron Fusion server so they can supervise the rooms, optimize the cleaning cycles and even anticipate problems if equipment is disconnected. Automatic scenarios on check-in, check-out and inoccupancy simplify their work as the Crestron system will put the room in a required state without anyone needing to intervene.





BEST USER
EXPERIENCE
COMMERCIAL

MK2 Audiovisueel BV

KLM International (ICA) Business Class Lounge

The Netherlands

The judges felt KLM's International (ICA) Business Class Lounge was the clear winner in the Best User Experience category as the solution is future proof, highly flexible, cost-effective, and infinitely scalable, fitting the look and objectives of the ICA Lounge. Departing from the client's brief to create a traditional solution based on HDBaseT with a central matrix, integrators MK2 opted for a different solution: distribution based on DM NVX.

KLM wanted its new International BusinessClass to become a destination in itself with a completely new interior, appearance and experience, and equipped with the latest technologies. New concepts for food and drinks, the lounge staff, logistics, kitchen design and digital innovations such as self-service access, all now contribute to the personal experience. For this new ICA Lounge, MK2 Audiovisueel created a solution to deliver the organization and integration of audio, visual, light and climate into a well-operable system, including all the necessary applications.



MK2 Audiovisueel attaches great importance to solutions that are innovative and offer flexibility and therefore opted for a different distribution solution than was requested: distribution based on DM NVX from Crestron. Practical challenges for this design were related to the long distances between the equipment and the rack. The necessary network switches were in different locations in the airport building. However, because the DM NVX solution operates based on a gigabit network, MK2 Audiovisueel had no problems creating a nonblocking infrastructure.

The client wanted to be completely unburdened. In order to support this, MK2 Audiovisueel has implemented Crestron Fusion (cloud version) to monitor and manage the entire installation. Through a remote VPN connection, MK2 Audiovisueel's service department has access to the equipment and can even take over controllers remotely.



HIGHLY COMMENDED:
AVMI / FOCUS 21 WITH CONDÉ NAST (UNITED KINGDOM)
CANCOM WITH TRELLEBORG SEALING SOLUTIONS (GERMANY)

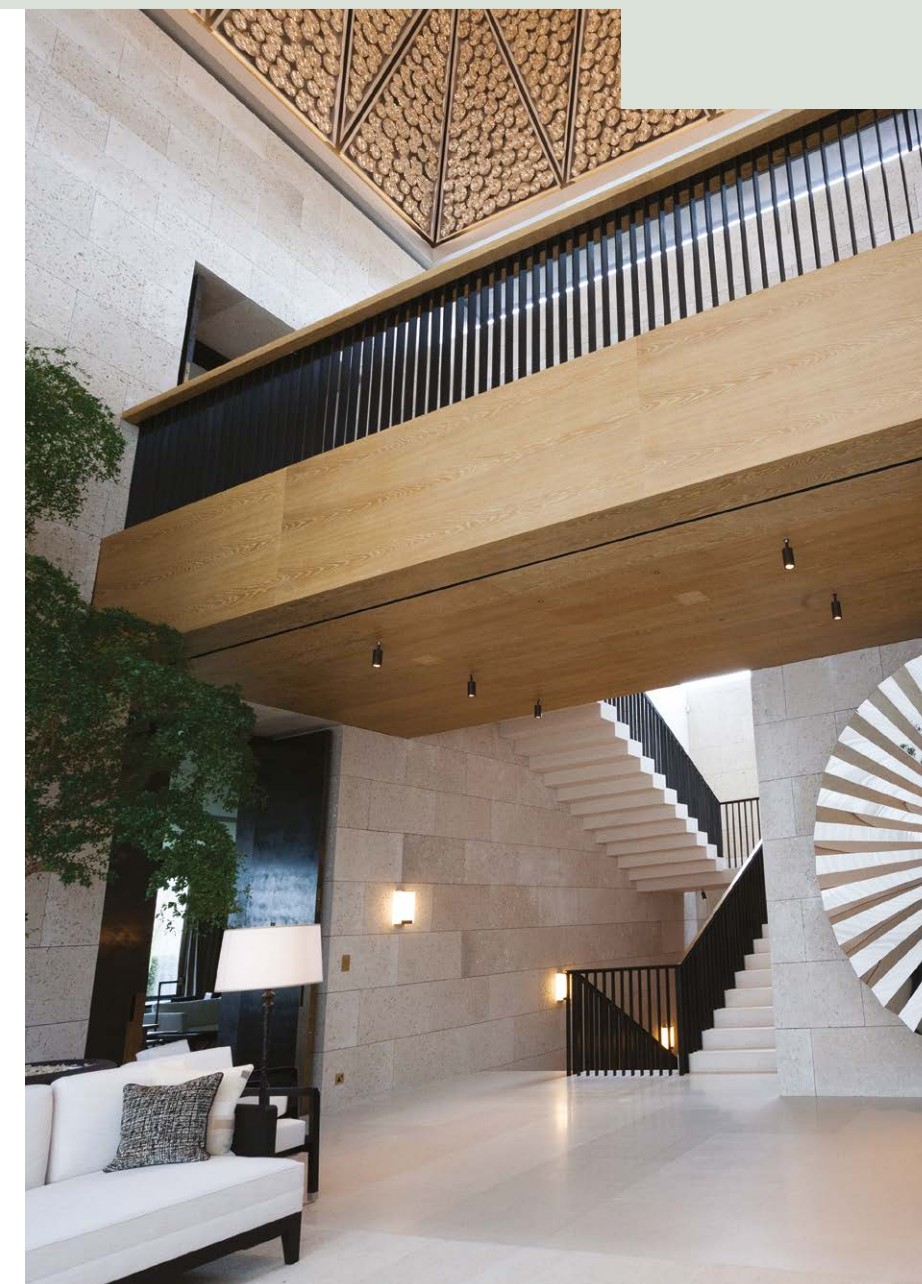
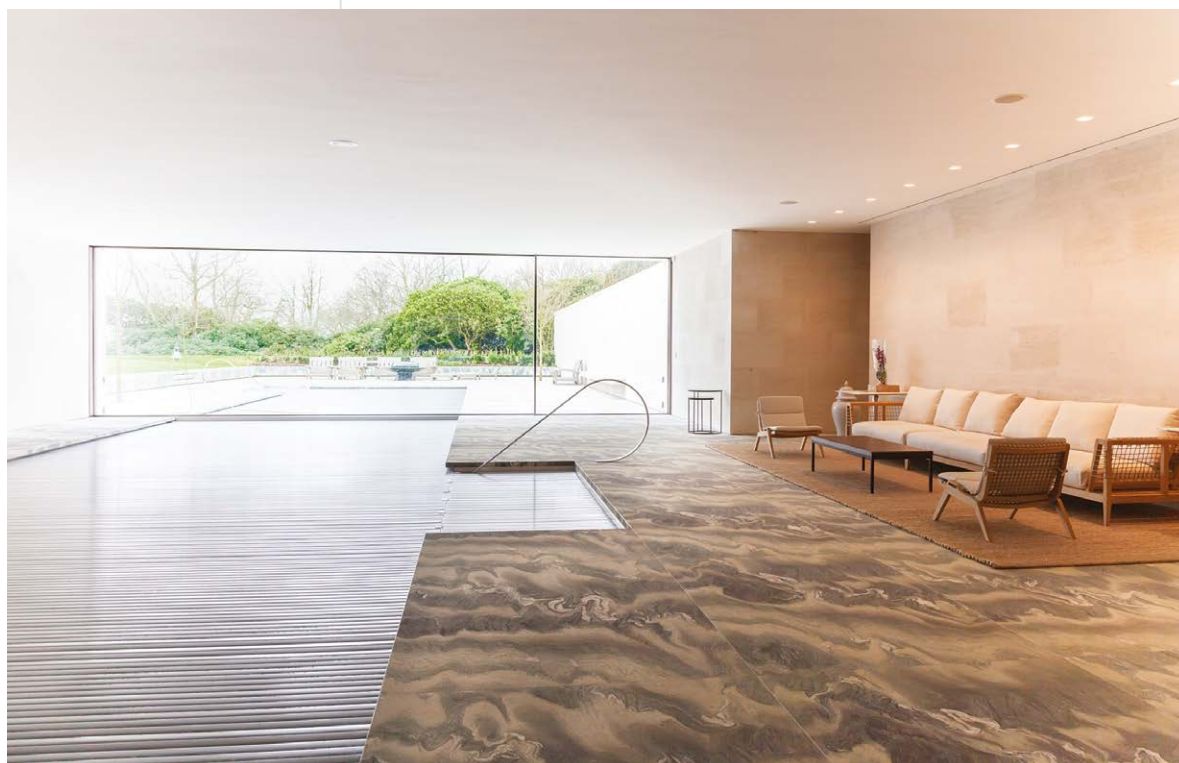


BEST
DESIGN MEETS
TECHNOLOGY
RESIDENTIAL

Environ

The Eco-Luxe Country Estate

United Kingdom



With its wow-factor design features and cleverly integrated technology infrastructure, this stunning smart eco-home instantly caught the attention of the judges. With sustainability a top priority, this project captures the essence of Design Meets Technology making it a clear debut winner of our newest award category.

Consulting closely with the client, architect and interior designer, Environ designed, installed and organically integrated a Crestron solution built on DigitalMedia™, tailored to the individual needs of the three generations living in the main family home. With 340-acres, this country estate also includes several

outbuildings including living quarters, an energy farm and education centre which were included in the integration and linked to a central Crestron control interface for simple management.

To maintain the striking design aesthetics of this modern home, technology was seamlessly woven into the fabric of the building, affording elegance and intuitive interaction from all residents, whether family member or guest. While the home was still a shell, Environ constructed the site-wide core infrastructure, burying kilometres of ducts and cabling to connect each building together. The result allows seamless communications as well as considering the future usage of all areas.



One of the most impressive features of the automation is the motorisation of four enormous (8m x 3m) glass panels leading onto the rear grounds. Environ took care of controlling these through careful integration with core building components.

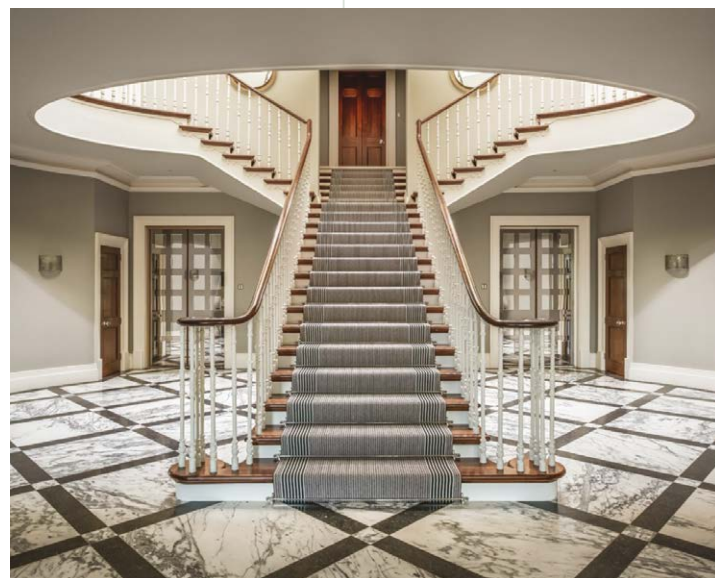
This unique country estate sets a new benchmark in sustainability and connectivity. In tandem with astonishing design, the project team have reinvented the country house and created a modern classic.



ULTIMATE
CRESTRON
HOME
RESIDENTIAL

Clic2Control Sydenhurst Home

United Kingdom



The sheer scale of the Crestron integration within this beautiful and vast Georgian-style country home, made it a stand-out winner for our esteemed judges. Flanked by exceptionally manicured lawns, this large family home is equipped with a state-of-the-art Crestron control system to impress!

This is a house built for luxurious indulgence and sumptuous entertaining. Its Georgian-style façade and interior design give the impression of a historical estate; however, this newly built home subtly hosts Crestron technology in every corner of the property. Simply controlled from customised Crestron touch screens, keypads and remote controls, the technology – whilst complex – is easy to use and manage for all residents.



Built on a foundation of Crestron DigitalMedia™, AV3 and DIN processors, Clic2Control created the ultimate Crestron home. Incorporating 460 zones of Crestron lighting, 181 Crestron keypads, 32 zones of audio powered by Crestron Sonnex®, 4 outdoor audio zones featuring discreet Crestron Air speakers, 16 separately controlled video zones, security systems, bowling alley, spa, outdoor pool, 200" screen home cinema among other areas - it's a winning feat of true integration expertise and attention to detail.

As the client is a great host, and regularly throws gatherings for up to 500 guests on occasions, 'Party Mode' allows all available music sources to be played at the desired 32 separately controlled audio zones with one-page individual volume control on the Crestron touch screens. The versatile Sonnex system also accommodates inputs from the DJ point (on the balcony of the games room) to be played throughout the entire property including tennis court, indoor/outdoor pool, pergola and the garden, making this property a great party place.

HIGHLY COMMENDED:
AESTHETIX INTEGRATED SYSTEMS WITH AL KHOR VIP VILLA (QATAR)



BEST GUI
RESIDENTIAL

Ultamation Ltd.

Lamina

United Kingdom

The Lamina Smart Graphics theme from Ultamation has evolved to match trends in design, technological advances, and client expectations to achieve its best-in-class status.

Commended by the judges for its ability to make technical processes simple for the end user, Lamina is installed in all of Ultamation's residential projects. The GUI is also used globally by other integrators and programmers.

The user interface is highly dynamic and flexible, and can be deployed across different devices, including the Crestron TSW and TSR, whilst maintaining consistency. Source selection can change from room to room within the same project and can also be tailored by the current users' preferences. This ensures that children, a babysitter, or guests, can only see the parts of the system that the homeowner wants them to see.



The baseline user interface accommodates a home screen, rich in information such as weather, time and news but also offers instant adjustment of lighting and heating. From there the homeowner can select any video or audio source, or the interface will switch if they select a source from one of the handheld remotes. The touch screen's menus provide quick access to lighting in any room.

Ultamation has grown the Lamina GUI by building on the successes of each individual project. Every successful feature then becomes a candidate for future standardisation into the user interface framework. Other features include CCTV, intruder alarm, touch screen and room audio setting adjustment, alarm clocks, sleep and room-linking for AV. The interface is then customised for each project to provide the floor plans which give rapid access to the entire home, adjusting sources, heating and lighting with only a few presses.

Ultamation's interface philosophy has always been to keep the common

functions easily accessible, using a minimum number of touches while logically grouping sophisticated functionality at lower levels. Homeowners benefit from the simplicity of a single press to bring a room to life, leaving them free to focus on their own priorities, while still affording the capabilities to set the perfect mood in a space and access their integrated systems; be it security or heating, all within the familiar framework of the menu.

This project is a Llama Group and Janey Butler Interiors full turn key development.



Images: Llama Group and Janey Butler Interiors

Imagine This

London Dock, Clipper Wharf

United Kingdom

A worthy winner of this category, the London Dock Clipper Wharf development celebrates the area's rich history and architectural heritage. By design, it is an exciting new destination and thriving new cultural quarter, featuring the finest selection of high-quality new homes, designed for modern capital living. The development is also home to Europe's largest installation of Crestron Pyng.

A principal feature of the development focuses on the implementation of technology, designed to seamlessly integrate into each apartment. The client required the apartments to include a premium home lighting control system which could be enjoyed, scaled and modified by each homeowner, and would provide the developer with a great value result. The judges were impressed at how custom integrator, Imagine This, used Crestron



Pyng as the mainstay of this luxury home automation solution. Pyng has been used to provide a customisable, reliable, flexible and intuitive control system that can be modified with confidence by the homeowner.

As with all projects of this type, standardisation is very important: the only way to confidently install that number of products is to make sure that the products themselves and the engineering are efficient. Using Crestron's Pyng technology, Imagine This knew they were in safe hands, and in particular found the ease of integration, programming and time-saving to be game-changers. Each apartment is equipped with lighting control to the master bedroom and living room, allowing light levels to be adjusted to suit the occasion, with

mood lighting to bathrooms. Each of the penthouses feature integrated touch screen-controlled audio visuals, comfort cooling, blind control and lighting systems with integrated access control. Homeowners use iPads to wirelessly control audio visual, air conditioning and lighting.



HIGHLY COMMENDED:
CASA GRANDE WITH FRANSOO WOUTER (BELGIUM)



BEST LIGHTING
AND SHADING
APPLICATION
RESIDENTIAL

ClearSphere Hampstead Family Home

United Kingdom



This Hampstead Family Home impressed the judges with its intuitive home automation system. Completed by ClearSphere, the no-expense spared London home pushes the boundaries of lighting and shading application with a selection of intelligent functions that enhance energy efficiency and maximise security.

A well thought out lighting design was essential to make the most of the dark colour palette chosen by the client. All 152 light circuits at the property are Crestron controlled allowing the family to create the perfect ambience at the touch of a button. Lighting moods can be pre-set and adjusted allowing the homeowner to personalise the home environment.

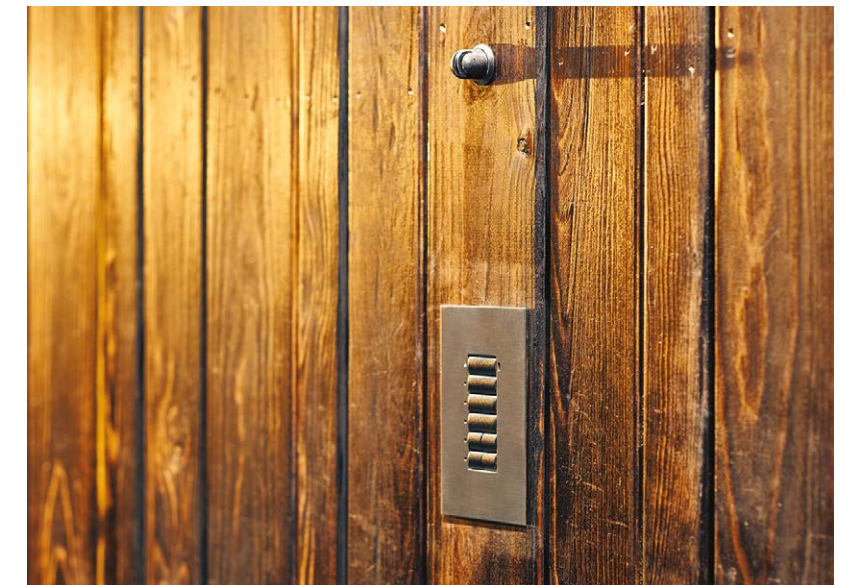


The property is equipped with simple Crestron control, TSW-760 touch screens offer a single point of control for all systems including: music, TV, lights, blinds, climate, access control and CCTV.

As the property is overlooked, privacy is paramount. Blinds on the ground and first floor of the property can be controlled via the Crestron keypads or set on astronomical clock timers, to open and close the blinds automatically at dusk and dawn. The blinds were also integrated with the Crestron BMS to maximise energy efficiency.

The Crestron controlled solution offers peace of mind for the homeowner, the installation of simulated occupancy means that lights and blinds can operate automatically when the house is unoccupied.

ClearSphere has gone above and beyond to meet client expectation, utilising Crestron technology to create a comfortable, modern home with intuitive automation that entertains, maximises energy efficiency and keeps the family secure.





BEST USER
EXPERIENCE
RESIDENTIAL

Integrated Audio Visual Solutions Penthouse of the Future

United Kingdom



This exciting project perfectly demonstrates how technology can have a positive impact on your lifestyle and your wellbeing. Our judges were impressed with the clever use of Crestron automation to create the optimal environment for convenience and health.

Integrated Audio Visual Solutions solved seemingly 'impossible' challenges to deliver this retro-fit solution, a thrilling blueprint of The Penthouse of the Future. Housed in a Grade II listed building built in 1766, the penthouse features audiophile-grade listening, invisible technology, a 4K home-theatre in every room, intuitive one-touch automated routines and healthy living through intelligent purified air systems and circadian lighting.



Pre-sets in each room are programmed to reflect different genres, moods and even seasons. Heat, air, underfloor heating, lighting, blinds, towel rails and air filters are all integrated through the Crestron system using a customised Crestron UI, seamlessly anticipating each day's rituals. A Zen music playlist and heated floors create a day-spa like atmosphere in the bathroom, whereas another touch of a button activates a

house-wide party mode with coloured LEDs, music, fireplace effects, and a dramatic lighting scene on the private rooftop.

During the day, the Crestron Solar-Sync provides accurate colour temperature to the main living and work areas to take into account circadian rhythms to ensure the best lighting for the human body and its needs.





**MOST
UNIQUE
APPLICATION
RESIDENTIAL**

G-ACTIV MEDeTIC Technologies Senior Living

France

Today's senior population is drastically increasing and making their living environment more secure and comfortable is a key factor for offering them to stay at home as long as possible. Winner of the Most Unique Application category, is a project in France where Crestron integrator, G-Activ, MEDeTIC Technologies created a sophisticated yet simple to use solution for Senior Living.

The judges felt this project aptly demonstrates that connected living is for all ages. 122 apartments in this complex are equipped with Din AP3 controllers to pilot shutters and lighting. Sensors for contacts, motion, smoke, and temperature are used to

define inhabitants' typical activity and find out if progressive and/or sudden changes are appearing in their daily activities cycles. The Crestron system then automatically alerts family or professional care givers in order to help identify where assistance may be needed.

The system provides remote command of shutters and lighting for reduced mobility inhabitants, automatic door lighting at night between bed and bathrooms, making life safer and more comfortable. The complex provides a secure environment for inhabitants with control and monitoring of smoke alarms, moisture, abnormal temperatures, doors and windows abnormal openings, and daily activity.





ULTIMATE
MULTI-DWELLING
UNIT
RESIDENTIAL

SmartComm Ltd. Centre Point

United Kingdom

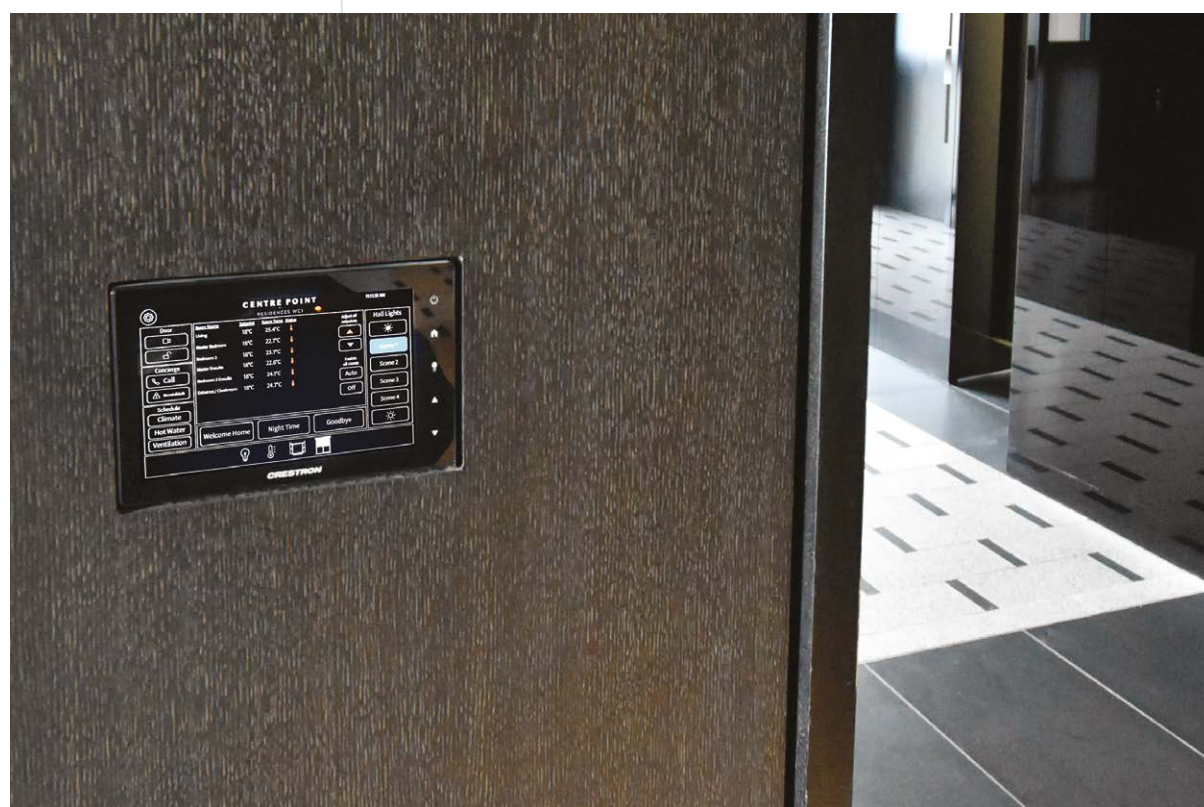
An iconic address demands an iconic solution, and with SmartComm at the helm, the new MDU installation at one of London's most famous tower blocks supremely delivers on that promise, so much so that the judges felt this project came out on top in this category. Centre Point is 34-storeys tall and, when built in the 1960s was one of London's first skyscrapers. Originally designed to provide supremely well-appointed office space, the building is in the heart of London's West End. However, Centre Point has now undergone transformation into a stunning, super-prime residential development.

Almacantar, the developer, selected SmartComm for the AV, lighting and IT installation in the fabulous duplex penthouse, as well as the 1, 2 and 3-bedroom luxury apartments, reception, shared spaces and external public square. The judges were struck by how well SmartComm had answered the brief in delivering the full convenience of smart home functionality, with solutions that are easy to use but also create a sophisticated, customized look. The ability to produce a feature rich, high quality tailored solution, within budget while working with the challenge of a building with a 1960s infrastructure was also highlighted.

SmartComm installed Crestron control systems in every apartment. Over 1,200 Crestron 5" portrait touch screens are installed throughout, all custom designed specifically for Centre Point residences. Each touch screen is colour matched to the surroundings to blend with the interior design. The right lighting and temperature were also important, and SmartComm chose Crestron because of ease of use, intuitive interfaces and Crestron's native

integration with the BACnet IP/BMS systems. This compatibility facilitates seamless integration with various systems including heating, curtains/blinds and lighting.

A specially designed Crestron App also allows homeowners to control all audio and visual sources, curtains, lighting, heating, door cameras, access control (and even the extractor fan in the kitchen) from a mobile device.





ULTIMATE
CRESTRON
SUPERYACHT
RESIDENTIAL

Van Berge Henegouwen (VBH) MY Lonian

The Netherlands

Judges were impressed by state-of-the-art integration of Crestron technology on this 87m luxury superyacht. MY Lonian required an intelligent solution to manage and control a range of factors on board, enhancing the overall experience for guests on board the premium vessel.

Van Berge Henegouwen (VBH) integrated a comprehensive solution, underpinned by DM NVX to control a range of functions on the superyacht including, lighting, AV, IT, satellite communications and video surveillance.

The superyacht provides a stunning 4K visual experience with seamless switching between sources allowing for an intense listening experience. The intuitive system is programmed to allow guests to easily access the same bookmarks, playlists and interface wherever they are on the luxury vessel.

Guests can expect a high-quality service from the MY Lonian Crew. Crew members can effectively manage steward requests, assignments and satellite management via eight Crestron TS-1542 touch screens. This allows staff to deal with incoming requests remotely in a quick and efficient way.

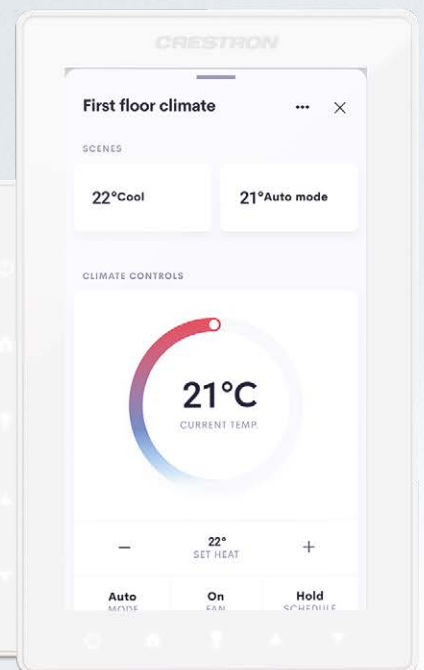
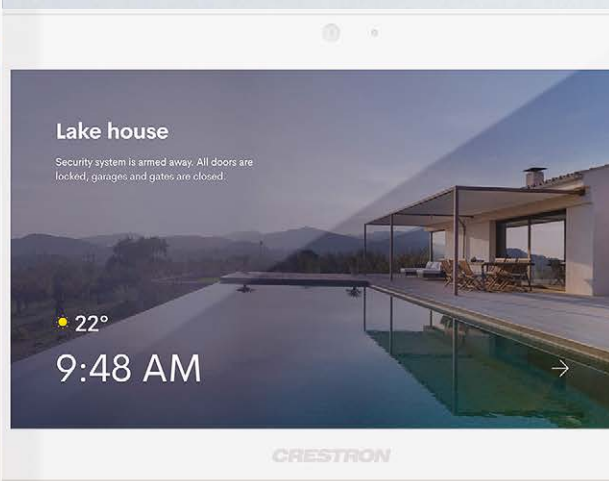
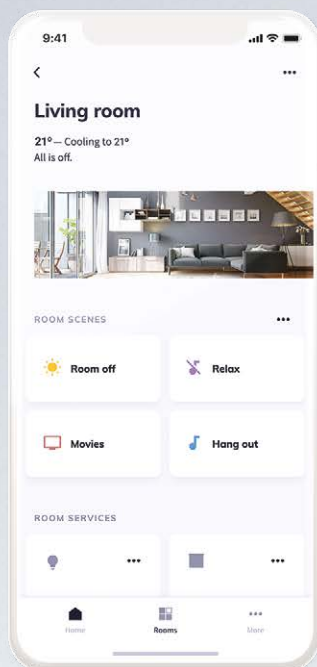


As Crestron technology is used in almost every aspect of the AV distribution and control, it's easy to troubleshoot any errors that may arise. This minimises the potential downtime of the system allowing for the ultimate user experience, without risk of major technical fault whilst at sea.

VBH have successfully utilised Crestron technology to install an effective solution that ensures optimal user experience aligns with luxury design.

The evolution continues

OS 2 delivered the foundation
OS 3 perfects the experience



A simpler, smarter, more sophisticated user experience.
Fast deployment for any size home project. And the best
hardware in the business. No one brings it home like
Crestron Home powered by OS3.

Introducing Crestron Home, powered by OS 3



All brand names, product names, and trademarks are the property of their respective owners. Certain trademarks, registered trademarks, and trade names may be used in this document to refer to either the entities claiming the marks and names or their products. Crestron disclaims any proprietary interest in the marks and names of others. Crestron is not responsible for errors in typography or photography. ©2019 Crestron Electronics, Inc.