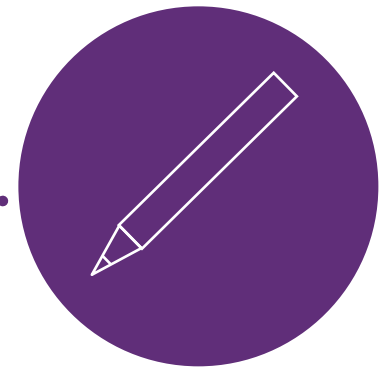


how a staff reward scheme works...

powered by **eagle**
eye
air



define

your audience

segment your employees, their department, their seniority

the rewards

select percentage discount, money off or unique promotions, or all three!

the user experience

decide if your staff will use a plastic card or a mobile app, or both!



set-up

database creation

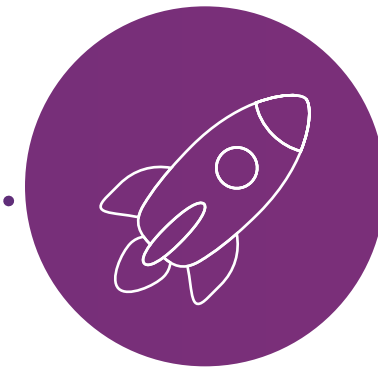
integrate your workforce management database with eagle eye AIR, or choose manual entry onto the AIR dashboard

wallet creation

wallets are created by us for each employee, defined by their reward types and qualification rules

POS integration

our AIR platform is integrated into your POS system to allow for the instant redemption of rewards



deploy

mobile app deployed

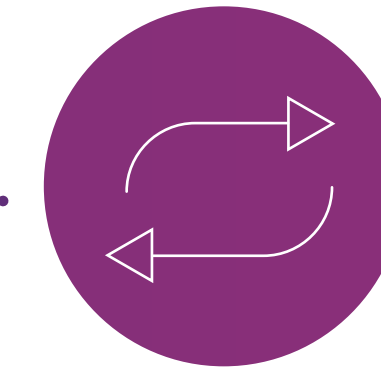
mobile app designed from our off-the-shelf app, a staff version of your customer app created, or integration with an existing staff app

plastic cards delivered

staff rewards scheme cards distributed to employees

staff registration

employees register with their employee ID number, photo ID and basic personal details



transact

real-time validation

instant redemption of staff rewards at your POS, communication between our platforms

staff rewarded

staff are rewarded and interacting with your brand in a different way = employee satisfaction

staff engagement

employees are engaged with your product and service = employee engagement



manage

transaction data

information about redemptions, locations and amount spent

track and incentivise

monitor activity on the scheme, identify misbehaviour, incentivise engagement

adjust and manage

redefine rewards, adjust audiences and proactively manage the scheme



your customer **in focus.**