

SMART HOME USER GUIDE

SMART BULB

SIMPLYCONSERVE

STEP 1 INSTALL SIMPLY CONSERVE™ APP

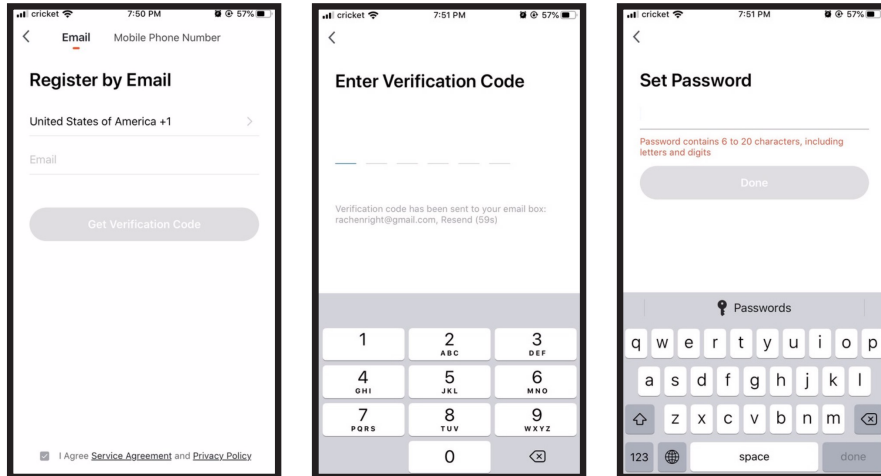


Download and install the Simply Conserve™ app via Apple App Store or Google Play Store by searching for “Simply Conserve.”

Note: 2.4Ghz network is required for setup

STEP 2 REGISTER AN ACCOUNT

Register using your mobile phone number or email address to receive a verification code and press “Next.” Enter the verification code and proceed to the next screen. Create a password for your account.



STEP 3 CREATE FAMILIES

Add a family name and location. Select rooms where smart bulbs will be located, and press “Done” when finished.

SMART HOME USER GUIDE

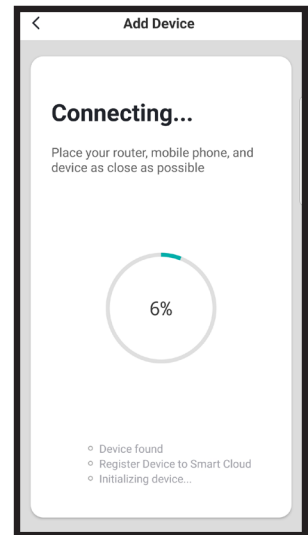
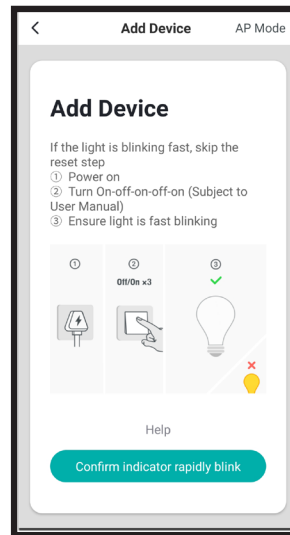
SMART BULB

STEP 4 ADD BULBS

Follow a simple 5-step process:

1. Install bulb in lamp and ensure light turns on.
2. Open the Simply Conserve™ app and click “Add a device” or “+” in the top right corner.
3. Select the icon that matches your new product.
4. Begin **EZ Mode Pairing** and confirm the light bulb is rapidly blinking.
Select your Wi-Fi network and enter the password. When finished, select “OK.”

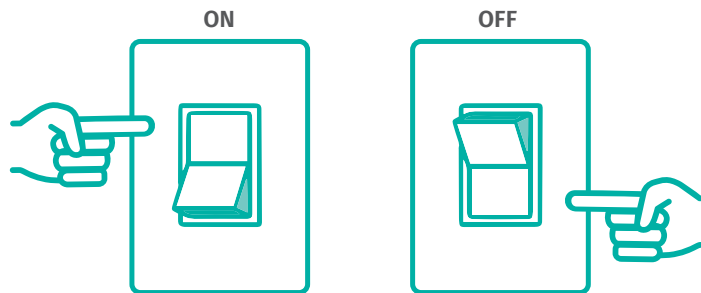
Note: If experiencing issues in EZ Mode Pairing, pair bulb in AP Mode (see page 3 for instructions).



Pairing with EZ Mode

Step 1

Power on device. Power off after 10 seconds and then power back on.



Step 2

Turn on—off—on—off—on, keeping the time interval consistent.



SMART HOME USER GUIDE

SMART BULB

Step 3

Tap “Next” to add device.

You can rename the bulb and share it with family members registered to the Simply Conserve™ app using the mobile number they registered. This will allow them to control the bulb from their phone.

Note: Mobile number must be entered exactly as typed for registration.

Pairing with AP Mode

Step 1

Ensure the bulb is flashing.

Step 2

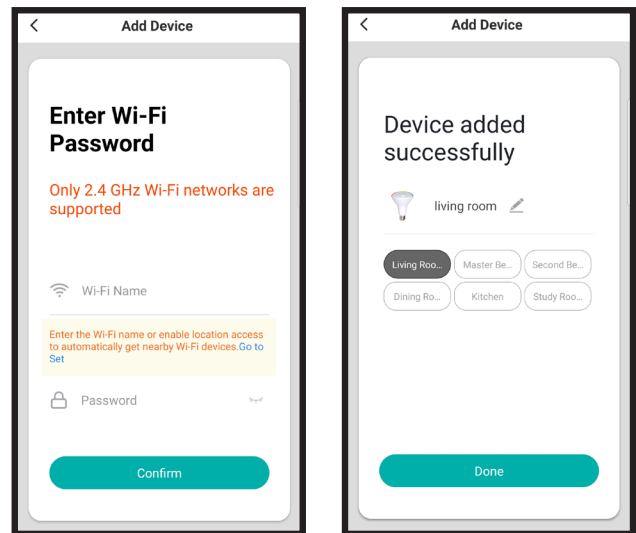
After tapping “Add device” and selecting your bulb, tap “AP Mode” in the top right corner. Connect to device hotspot and then Wi-Fi.

Step 3

Tap “Next” to add device.

You can rename the bulb and share it with family members registered to the Simply Conserve™ app using the mobile number they registered. This will allow them to control the bulb from their phone.

Note: Mobile number must be entered exactly as typed for registration.



STEP 5 CONTROL YOUR LIGHTING

Click on any bulb to change light color, adjust brightness, choose a scene or set a schedule. Alternatively, create a group of bulbs to change settings for more than one bulb at a time. For more information, see “Create Groups” on page 4.

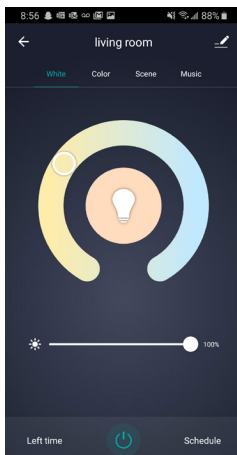
Select bulb and navigate to settings in the top right to check network status, add it to a group of bulbs, or share it with other members of the household.

Color Temperature

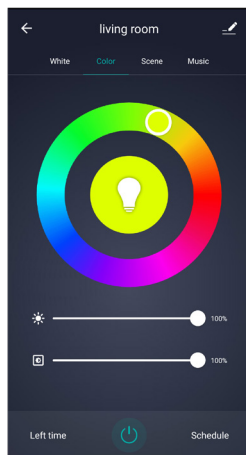
Change your light bulb from a soft, warm white to a bright, blue-toned daylight white.

SMART HOME USER GUIDE

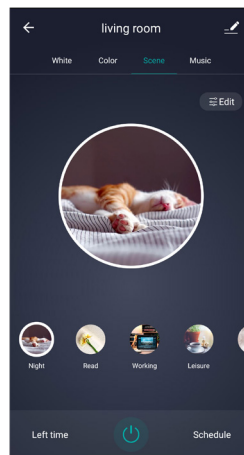
SMART BULB



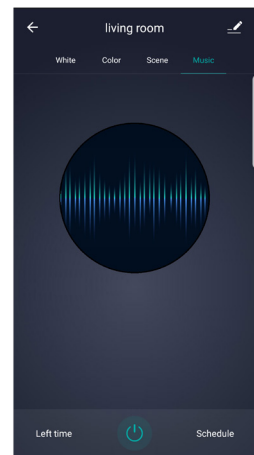
Adjust Temperature



Choose a Color



Set a Scene



Sync Music

Bulb Color

Choose from any hue in the rainbow to change the color of your bulb. Adjust brightness to suit your mood.

Scenes

Choose from a variety of scenes or create your own. You can create a scene for movie night, a party scene with colorful light or even a candlelit scene with warm, low lighting.

Schedules

Set schedules based on your preferences and daily needs. Choose individual actions for each bulb, set the same schedule for more than one day, and create a schedule for a group of bulbs.

Music

Choose "Music Sync" to match bulb color changes to the beat of the music playing on your speakers.

Create Groups

1. Click on the bulb you would like to add to a group. Select settings by clicking the three dots in the top right of the screen.
2. Select "Create Group."
3. Select the smart bulbs you would like to include in the group.
4. Click "Save" and enter a name for the group.

Bulbs can then be controlled together for actions including changing color, changing a scene or setting a schedule. For example, switch all your downstairs lights on as soon as it gets dark by creating a schedule.

SMART HOME USER GUIDE

SMART BULB

Bulb Settings

Click on the three dots in the top right to control settings for each bulb. Change device name, check Wi-Fi network status, share bulb with other household members, create a group and more.

Note: If the bulb has been shared, you will not be able to control settings.

Connect to the bulb directly by using the quick connection to access all settings.

Voice Control

Use the Simply Conserve™ app to control bulbs using your voice. Click on the microphone icon to use verbal commands for your bulbs. See below examples of commands you can use after pressing the microphone icon (replace bulb name with name of your bulb).

To switch on/off, say:

“Turn on *bulb name*.”

“Turn off *bulb name*.”

To change color, say:

“Change *bulb name* to blue.”

To change brightness, say:

“Change *bulb name* brightness to 90 percent.”

Google Home Setup

1. Tap “Home Control” in the menu on the Google Home app home page, then tap “+.”
2. Find “Simply Conserve” on the list. In the new window, select your Simply Conserve™ account’s region, type your Simply Conserve™ account log-in and password, then tap “Link Now.” After you assign rooms for your bulbs, each bulb will be listed in the Home Control page.
3. Control your smart bulbs through Google Home. For example, if you were to adjust your bedroom light, you could use the following commands:

“Ok Google, turn on/off bedroom light.”

“Ok Google, set bedroom light to 50 percent.”

“Ok Google, set bedroom light to red.”

SMART HOME USER GUIDE

SMART BULB

Amazon Alexa Setup

1. Choose “Skills” in the options bar, then search “Simply Conserve” in the input box.
2. Select Simply Conserve™ in the search results, then click “Enable to Use.”
3. Input your Simply Conserve™ account log-in and password.
4. Control your smart bulbs through Amazon Echo. For example, if you were to adjust your bedroom light, you could use the following commands:

“Echo (or Alexa), turn on/off bedroom light.”

“Echo (or Alexa), set bedroom light to 50 percent.”

“Echo (or Alexa), set bedroom light to red.”

DISPOSAL

Do not dispose of this product as unsorted municipal waste. Collection of such waste must be handled separately as special treatment is necessary. Recycling facilities are now available for all customers at which you can deposit your discarded electrical products.

SUPPORT

For further assistance setting up or making the most of your smart bulb, contact customercare@amconservationgroup.com.