

SMART HOME USER GUIDE

SMART SOCKET

SIMPLYCONSERVE

STEP 1 INSTALL SIMPLY CONSERVE™ APP

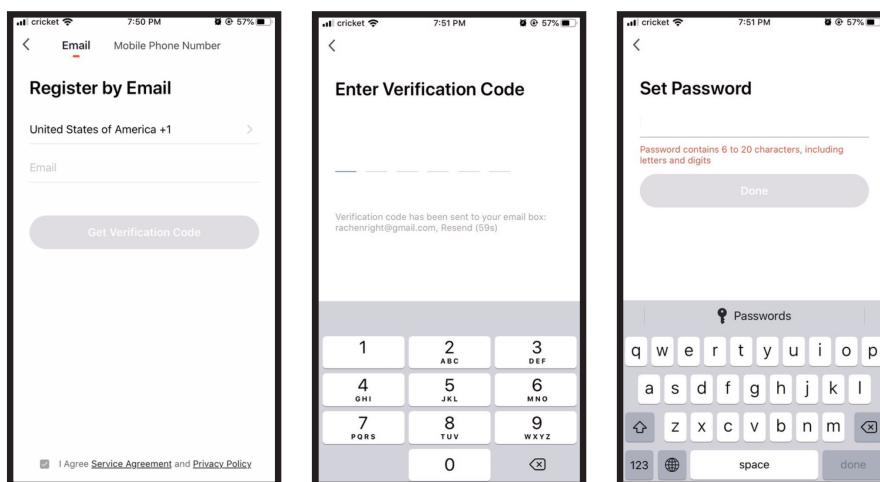


Download and install the Simply Conserve™ app via Apple App Store or Google Play Store by searching for “Simply Conserve.”

Note: 2.4Ghz network is required for setup

STEP 2 REGISTER AN ACCOUNT

Register using your mobile phone number or email address to receive a verification code and press “Next.” Enter the verification code and proceed to the next screen. Create a password for your account.



STEP 3 CREATE FAMILIES

Add a family name and location. Select rooms where smart sockets will be located, and press “Done” when finished.

SMART HOME USER GUIDE

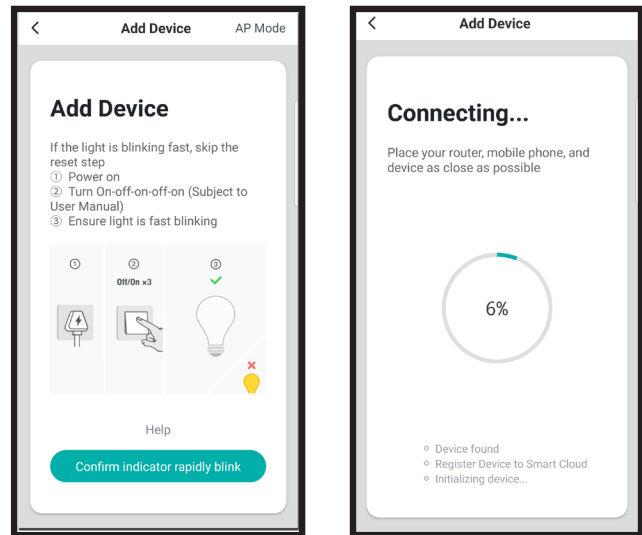
SMART SOCKET

STEP 4 ADD SOCKET

Follow a simple 5-step process:

1. Plug socket into outlet and ensure LED indicator light turns on.
2. Open the Simply Conserve™ app and click “Add a device” or “+” in the top right corner.
3. Select the icon that matches your new socket.
4. Begin **EZ Mode Pairing** and confirm the LED indicator light is rapidly blinking.
5. Select your Wi-Fi network and enter the password. When finished, select “OK.”

Note: If experiencing issues in EZ Mode Pairing, pair socket in AP Mode (see page 3 for instructions).

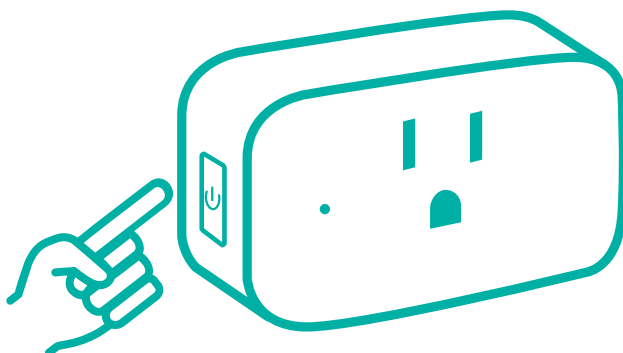


Pairing with EZ Mode

Step 1

Starting with your device powered on, power off. Then, power back on by holding down the power button until the LED indicator begins blinking rapidly (2 per second).

Note: You may need to repeat the on-off-on-off sequence until your device is ready to pair. To ensure you don't perform this sequence too quickly, wait until the light turns on before turning off again.



SMART HOME USER GUIDE

SMART SOCKET

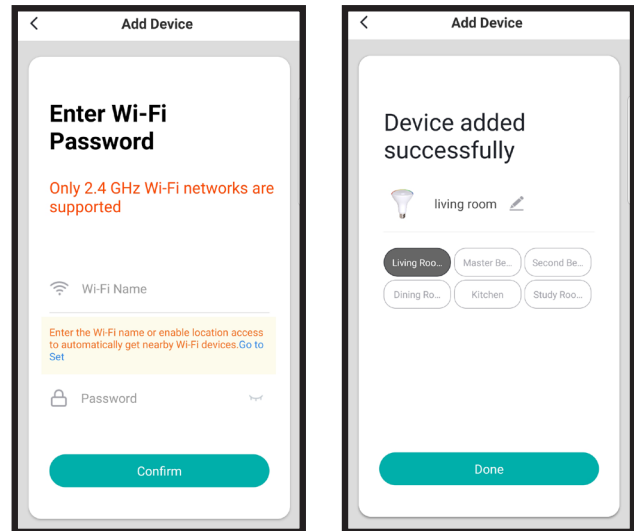
Step 2

Once LED indicator light is blinking rapidly, select “Confirm light blinks rapidly” to continue.

Step 3

Select your Wi-Fi network and enter the password. When finished, select “OK.” For best functionality, maintain a strong Wi-Fi signal by keeping device and router within range.

In the process of connecting, the flashing light will change from flashing to steady. Once the socket has connected, “Device added successfully” will appear on app screen. If adding more than one socket at the same time, wait for the others to confirm as successfully added after a few seconds.



Pairing with AP Mode

Step 1

Ensure LED indicator light is flashing.

Step 2

After tapping “Add device” and selecting your socket, tap “AP Mode” in the top right corner. Connect to device hotspot and then Wi-Fi.

Step 3

Tap “Next” to add device.

You can rename the socket and share it with family members registered to the Simply Conserve™ app using the mobile number they registered. This will allow them to control the plugged-in devices from their phone.

Note: Mobile number must be entered exactly as typed for registration.

STEP 5 CONTROL YOUR DEVICES

You can control your devices in several ways – including clicking on a socket to turn on or off, setting schedules for your sockets, sharing sockets with other household members, and grouping sockets to reflect the same settings.

SMART HOME USER GUIDE

SMART SOCKET

Setting Schedules

1. Select a socket or group of sockets, then navigate to “Settings” by clicking the three dots in the top right of the screen.
2. Follow the prompts to set the schedule based on your preferences and daily needs.

Creating Groups

1. Click on the socket you would like to add to a group. Navigate to “Settings” by clicking the three dots in the top right of the screen.
2. Select “Create Group.”
3. Select the sockets you would like to include in the group.
4. Click “Save” and enter a name for the group.

Note: Once grouped, sockets can be controlled together, including powering on or off and reflecting the same schedule. This can be useful when set to your daily routines. For example, you can create a “Good Morning” group which turns both your coffee maker and your television on when you wake up in the morning.

Adjusting Device Settings

1. Select a device, then navigate to “Settings” by clicking the three dots in the top right of the screen.
2. Update the device settings based on your preferences, including changing the device name, checking the Wi-Fi network status, sharing the socket with other household members, creating a group and more.

You can also connect to a socket directly by using the quick connection to access all settings.

Note: If the socket has been shared, you will not be able to control settings.

Using Voice Control

Using the Simply Conserve™ app, you can turn your sockets on and off using your voice.

1. Click on the microphone icon, then say:

“Turn on *device name*.”

or

“Turn off *device name*.”

(Replace “device name” with the name of your plugged-in device.)

SMART HOME USER GUIDE

SMART SOCKET

Connecting with Google Home

1. Tap “Home Control” in the hamburger menu on the Google Home app home page, then tap “+.”
2. Find “Simply Conserve” on the list. In the new window, select your Simply Conserve™ account’s region, type your Simply Conserve™ account log-in and password, then tap “Link Now.” After you assign rooms for your sockets, each socket will be listed in the Home Control page.
3. Control your smart sockets through Google Home. For example, if you were to adjust your bedroom fan, you could use the following commands:

“Ok Google, turn on bedroom fan.”

“Ok Google, turn off bedroom fan.”

Connecting with Amazon Alexa

1. Choose “Skills” in the options bar, then search “Simply Conserve” in the input box.
2. Select Simply Conserve™ in the search results, then click “Enable to Use.”
3. Input your Simply Conserve™ account log-in and password.
4. Control your smart sockets through Amazon Echo. For example, if you were to adjust your bedroom fan, you could use the following commands:

“Echo (or Alexa), turn on bedroom fan.”

“Echo (or Alexa), turn off bedroom fan.”

DISPOSAL

Do not dispose of this product as unsorted municipal waste. Collection of such waste must be handled separately as special treatment is necessary. Recycling facilities are now available for all customers at which you can deposit your discarded electrical products.

SUPPORT

For further assistance setting up or making the most of your smart socket, contact customercare@amconservationgroup.com.