

COVID-19: Does Sheltering in Place Have an Upside?



IMPACT OF COVID-19 ON OTHER CRITICAL EVENTS

COVID-19 is a shock, driving massive changes in our societies overnight. Obviously the economic impact will be monumental, but what about the societal impact of these changes. It is hard to tell how permanent these changes will be, or whether all these changes will be harmful in the long run. Are there changes that we can and should sustain after this pandemic because of the hidden benefits? How would we know? Is there light at the end of the COVID-19 tunnel?

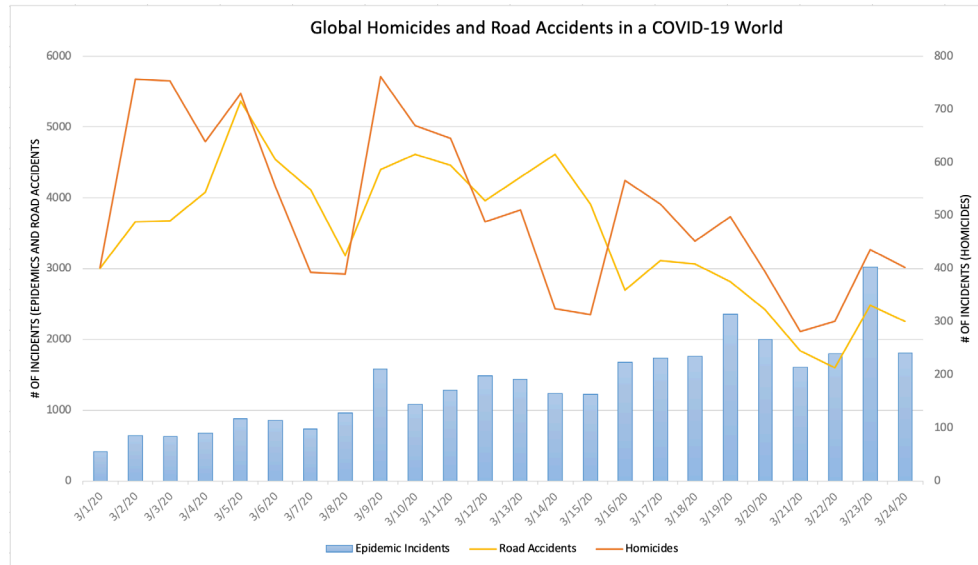
Stabilitas provides clients with actionable intelligence on more than 50 distinct critical event classes across the globe. This gives us unique insights into both the volume of incidents in different classes and how they are trending over time. So when we read [this report](#) from KOMO4 news that Washington State was reporting a reduction in collisions we decided to look at our data to see if this was a global trend or isolated to Washington state.

"Washington State Patrol says between March 12 and 23, there were 230 wrecks on King County freeways compared to the same time last year, when the number of collisions were nearly double that at 550."

According to the KOMO4 story there has been a 58% reduction in road accidents year over year in the Seattle area. When we looked at our own worldwide tracking of road accidents we saw similar reductions. Between March 1st and March 15th Stabilitas detected an average of 4,100 road accidents a day. From March 16th on as lockdowns extended around the world we saw daily road accidents on average reduced to 2,400 a day. That is a 41% reduction and is largely in line with the Washington state numbers.

Unintended Consequences

Expanding on this analysis we also looked at the rate of daily homicides detected and saw similarly steep declines. Other human caused critical events including assaults and shootings show early signs of similar but smaller declining trends.



While the COVID-19 pandemic is nothing to celebrate, it is valuable to understand the correlated societal impacts of the various restrictions on movement put in place around the world. This data may serve us well in future in understanding how our normal routines contribute to the rate of critical events that happen every day.

***** Stabilitas uses a very large global set of structured and unstructured data sources for event detection. Raw data is then passed through our AI pipeline to classify events and extract relevant information including geography and time. We can not guarantee we detect every event but believe our detection rate is industry leading and statistically representative of worldwide trends. *****



Contact us today to see for yourself how Stabilitas is changing the world of critical event intelligence.

STABILITAS.IO | INFO@STABILITAS.IO | 202.683.7760 | SEATTLE, WA