

---

## Astra Academy - Higher Education Resources from Higher Learning Advocates



John Barnshaw, Ph.D.  
Vice President  
Research and Data Science  
Ad Astra

[jbarnshaw@aais.com](mailto:jbarnshaw@aais.com)



India Heckstall, MPA  
Program Associate  
Policy and Communications  
Higher Learning Advocates

[iheckstall@higherlearningadvocates.org](mailto:iheckstall@higherlearningadvocates.org)

---

## Presentation Overview

- Introduction (5 Minutes)
- Higher Learning Resources (40 Minutes)
- Comments and Questions (15 Minutes)



- [Ad Astra](#) is a course scheduling and enrollment management organization that partners with over 500 institutions of higher education annually to improve scheduling accessibility and efficiency for students.
- Ad Astra offers unique solutions designed to graduate more students faster.
- [Astra Academy](#) is a webinar series that brings together diverse stakeholders across the higher education landscape to share with you how their work is helping to improve student outcomes with a focus on student retention, time-to-completion, or graduation.

H I G H E R   L E A R N I N G   A D V O C A T E S

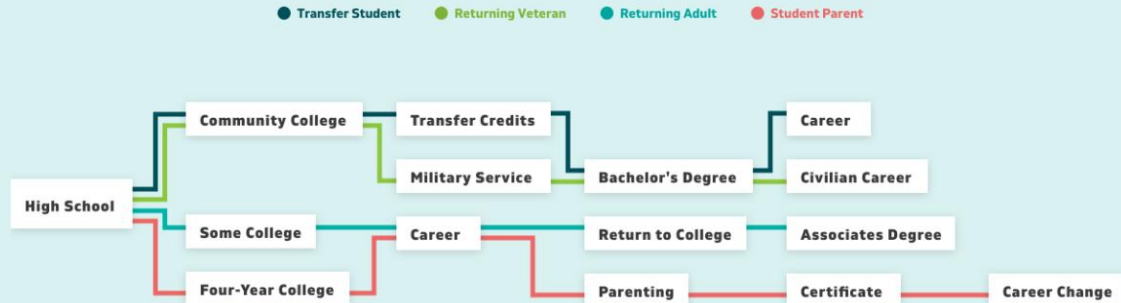
# Higher Education Resources

S U P P O R T I N G   T O D A Y ' S   S T U D E N T S

# Who are we?

Higher Learning Advocates is a bipartisan non-profit advocacy organization working to shift federal policy from higher education to higher learning—education and training beyond high school that leads to a degree, credential, or employment.

We are committed to the change needed to support the needs and success of today's students, and are advocating for policies that support a postsecondary system that is student-centered, outcomes-based, and focused on ensuring all of today's students can access and succeed.



# Who are Today's Students?

37%

OLDER THAN 25



13%

LIVE ON CAMPUS



64%

WORK WHILE  
IN COLLEGE



40%

PART-TIME



24%

PARENTING



57%

ATTEND



49%

FINANCIALLY  
INDEPENDENT



STUDENT ENROLLMENT  
INCREASES 1996-2010:

↑ 11% WHITE

↑ 240% HISPANIC

↑ 72% BLACK

31%

AT OR BELOW

---

FEDERAL  
POVERTY  
LINE

# State Profiles

Higher Learning Advocates created state profiles to provide a snapshot of the higher education landscape in each state compared to the national average.

View the state profiles here:

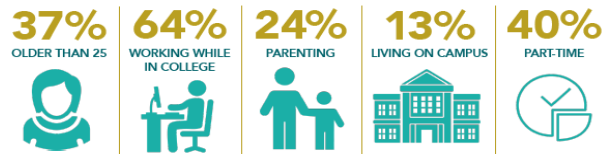
<https://higherlearningadvocates.org/resource-category/state-profiles/>

## NORTH CAROLINA

### WHO ARE TODAY'S STUDENTS?

Nationally, today's students are more diverse than any previous generation of college students: in age, race, and income level. They're more mobile and may not live on campus. Most participate in the workforce, either full-time or part-time. Work and family responsibilities beyond the classroom—whether that is on-campus or online—often compete with today's students' educational goals.

### NATIONWIDE, TODAY'S STUDENTS ARE:



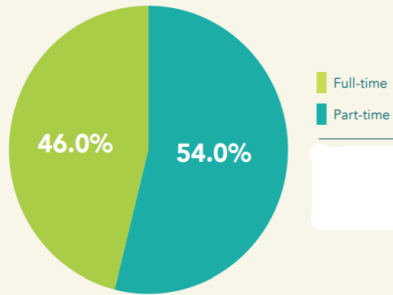
### IN NORTH CAROLINA,

Margaret Spellings, former President of the University of North Carolina system, former Secretary of Education, and former board member of Higher Learning Advocates, is a national leader in issues relating to college affordability, accessibility, student success, and economic impact.

“ Regardless of the scale — at an institution, a state, or a nation — the same principles that underpin good management apply. People want to know what's expected of them, and what the consequences will be if they meet their goals or don't. Done well, accountability is a show of respect for the professionalism and capacity of the people who work for you. We can take that same principle and apply it nationally. It's on all of us to ensure that we do so in the new year and not squander the opportunity that HEA reauthorization affords us. ”

# State Profiles Fast Facts

Nevada's Fall Student Enrollment, 2017



## FEDERAL STUDENT AID

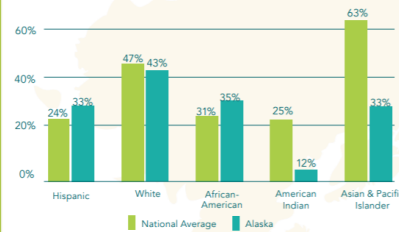
About

**72%**

of Minnesota's college students and their families take out federal student loans,<sup>1</sup> compared to

**70%** nationwide.<sup>2</sup>

Percentage of Alaska Residents Ages 25-64 with at least an Associate's Degree by Race



Median Earnings by Educational Attainment for Delaware Residents Aged 25 and Over





# Equity 101

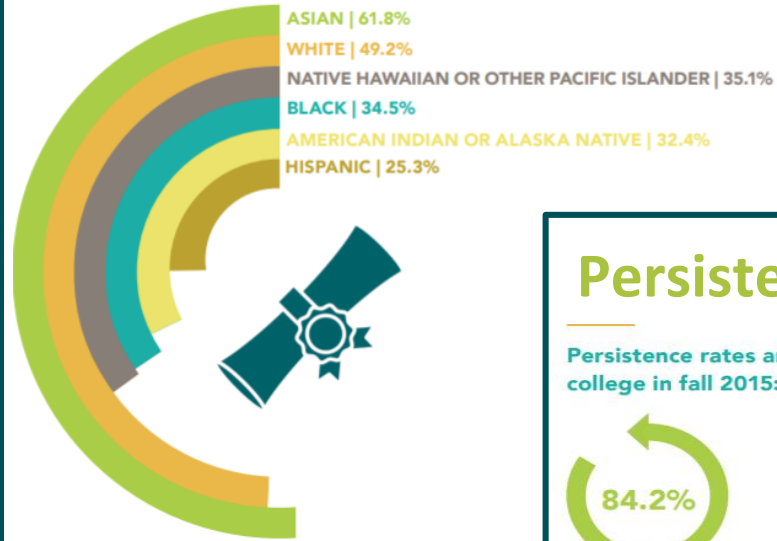
Equity 101 provides a quick overview of the equity gaps in postsecondary education to help policymakers address inequities that exist in higher education.

Read the Equity 101 here:

<https://higherlearningadvocates.org/resource/higher-ed-101/101-equity-gaps-in-higher-education/>

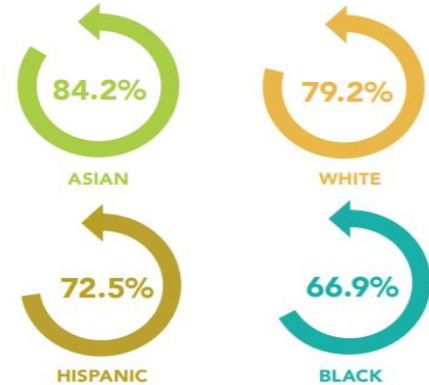
## Attainment

Percent of adults ages 25 and older who have earned an Associate's degree or higher in 2017:<sup>6</sup>



## Persistence

Persistence rates among students who entered college in fall 2015:<sup>2</sup>



# Other Higher Education 101s

- 1 101: Pell Grant
- 2 101: FAFSA
- 3 101: Higher Education and the Triad
- 4 101: Accreditation
- 5 101: Income-Driven Repayment
- 6 101: Negotiated Rulemaking

## 101: PELL GRANT RAINY DAY FUND



### WHAT IS THE PELL GRANT PROGRAM?

The Pell Grant program is a federal means-tested program that offers postsecondary aid in the form of a grant to be used for tuition, fees, and related expenses. Operated by the U.S. Department of Education's (ED) Office of Financial Student Aid (PSA), the Pell Grant program is available on a sliding scale to individuals based on financial need, cost of attendance and part- or full-time status.

### WHY THE PELL GRANT MATTERS

The finances of today's students should not preclude anyone from accessing and obtaining a high-quality degree or credential. Research shows that individuals with postsecondary degrees or credentials earn significantly more over their lifetimes compared to their peers with only a high school diploma. The Pell Grant program is an evidence-backed tool to help today's students pay for higher education and earn meaningful degrees and other credentials.

#### DID YOU KNOW?

**33%**  
OF STUDENTS  
RECEIVE A  
PELL GRANT\*



### CALCULATING PELL GRANT FUNDING

The Pell Grant program is funded through a combination of yearly mandatory and yearly discretionary appropriations. Notably, the federal government funds the Pell Grant program before students actually receive their Pell Grants. Each year, Congress and the Administration, based on the previous year's spending and future projections, estimate the amount of funding necessary to award a Pell Grant to each eligible student. The actual demand for Pell Grants in any given year may differ from this initial estimate. If less funding is needed to provide Pell Grants to all eligible students, the program generates a surplus. If more is needed, the program can operate in a "shortfall." If a shortfall occurs, then the subsequent year's appropriations must make up the difference.



\* <https://trends.collegeboard.org/student-aid/figures/tables/undergraduate-enrollment-and-percentage-receiving-pell-grants-over-time>

Check out our 101s here:

<https://higherlearningadvocates.org/resource-category/higher-ed-101/>

# Questions? Stay in touch!



**India Heckstall**  
Policy & Communications, Program Associate

[iheckstall@higherlearningadvocates.org](mailto:iheckstall@higherlearningadvocates.org)  
Follow me on twitter: @IndiaHeckstall

[www.higherlearningadvocates.org](http://www.higherlearningadvocates.org)



---

## Ways to Keep Engaged



- [Higher Learning Advocates Resources](#)



- ["Aligning Math Pathways"](#) - Tuesday, December 3 - 3.00 PM Eastern



- October 18 - 21, 2020 - [Aspire Conference](#), Kansas City, Missouri

# Addressing Your Questions and Comments