



*Mountain Summit*  
*June 12<sup>th</sup> and 13<sup>th</sup>, 2019*



**FRONT RANGE**  
**COMMUNITY COLLEGE**

*“Recipient of Complete College America’s 2018 Technology Trailblazer Award”*

# 2019 Mountain Summit Landing Page

[http://info.aais.com/2019\\_mountain\\_summit](http://info.aais.com/2019_mountain_summit)

June 12<sup>th</sup>, 2019

June 12 <sup>th</sup> , 2019		
		Details
1:00 p.m.	2:15 p.m.	Registration
2:15 p.m.	3:30 p.m.	<p>Summit Welcome and Introductions, 3 Years together in Denver!</p> <p>Patrick and I are excited to be back in Denver for Year 3! We are pleased to welcome Maggie Roberts into Colorado, New Mexico, Arizona and the Dakotas as our Client Experience Manager in 2019. I know she looks forward to spending time with each of you. We would like to take this time to talk more with each of you and we will be using this conversation to build upon our Day 2 Presentations. The West Regional team is lucky to have Christie Roberts, Client Advisory Board Member for Ad Astra, and Associate Registrar at Texas A&amp;M – Corpus Christi, join us this year. This is also a chance for an open discussion. Think of this as the WHITE ELEPHANT of Introductions and all Questions Ad Astra! Ready, Set, and enjoy this time to have an informal conversation.</p> <p>Meeting Times Available as well! Sign-up sheet for the meeting is on the Summit Website</p>
3:30 p.m.	4:15 p.m.	<p>Ad Astra Presentation – KEEPING IT BRIEF!</p> <ol style="list-style-type: none"><li>1. Ad Astra Year in Review</li><li>2. Pathways and Momentum Year</li><li>3. Sneak Peek into Where we are Going.</li></ol>

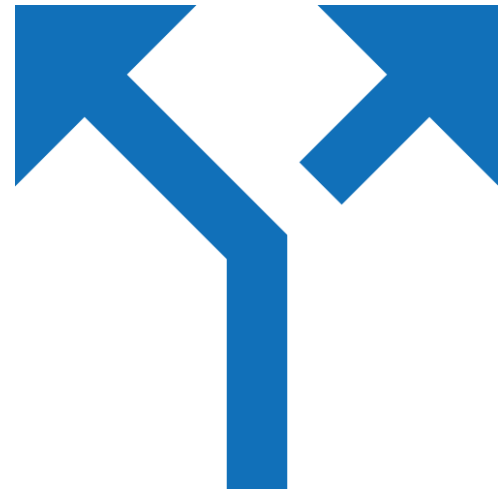
# Introductions

Industry trends...



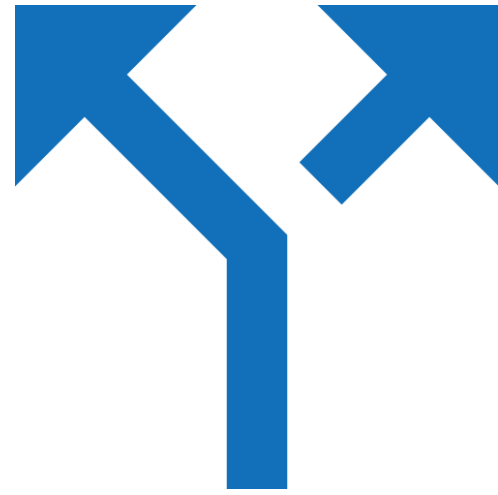


Student Completions



Pathways





# Integrated Planning and Advising



Actionable Data

What's new?



Momentum to  
Completion



# Momentum Year Defined

**Momentum Year** is the beginning point for students that helps them find their path, get on that path, and build velocity in the direction of their goals.

*Complete College Georgia*

# Momentum Year Metrics

Momentum Year Metrics include completion of:

- Core English
- Core Math
- Nine Credits in the Students academic focus area
- 30 credits in their first year

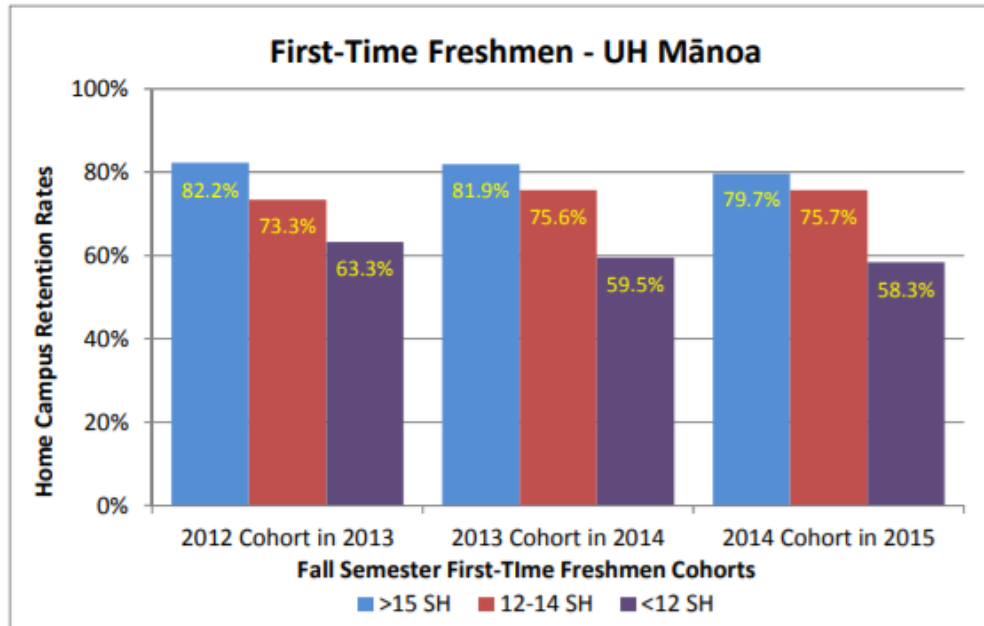
# Why is it Important?

“Data shows that *time*, not tuition is the enemy of college completion.”

- *Stan Jones, President of Complete College America, 2012*

[https://www.washingtonpost.com/opinions/obamas-tuition-plan-fallshort/2012/02/02/gIQANouznQ\\_story.html?noredirect=on&utm\\_term=.378cd3bb4339](https://www.washingtonpost.com/opinions/obamas-tuition-plan-fallshort/2012/02/02/gIQANouznQ_story.html?noredirect=on&utm_term=.378cd3bb4339)

# Momentum Impact on Retention



**Want to graduate more students on time?**

The University of Hawai'i, where 15 to Finish originated, launched an aggressive marketing campaign to inform students of the importance of taking 15 credits per semester or 30 credits per year. In just one year, the state saw double-digit increases in the percentage of students taking 15 credits.

At the Manoa campus, the percentage of students taking 15 credits jumped from 38% to 64%.

Location	2011	2015
Statewide	15%	31%
Manoa Campus	38%	64%

**COMPLETE COLLEGE AMERICA**



# Momentum Impact on Graduation

Figure 4: Impact of Finishing 30 Credit Hours the First Year on Graduation Rates of Student Cohorts at Kentucky's Public Universities

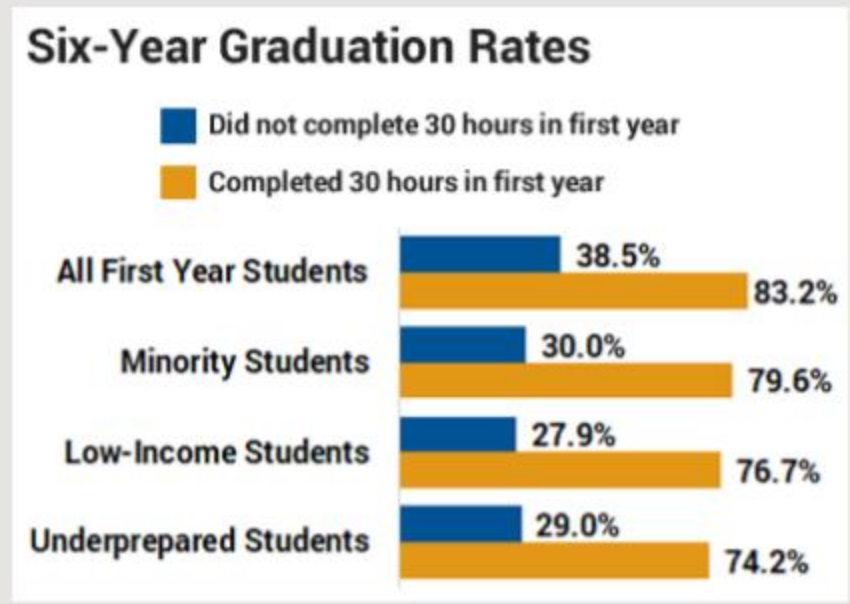
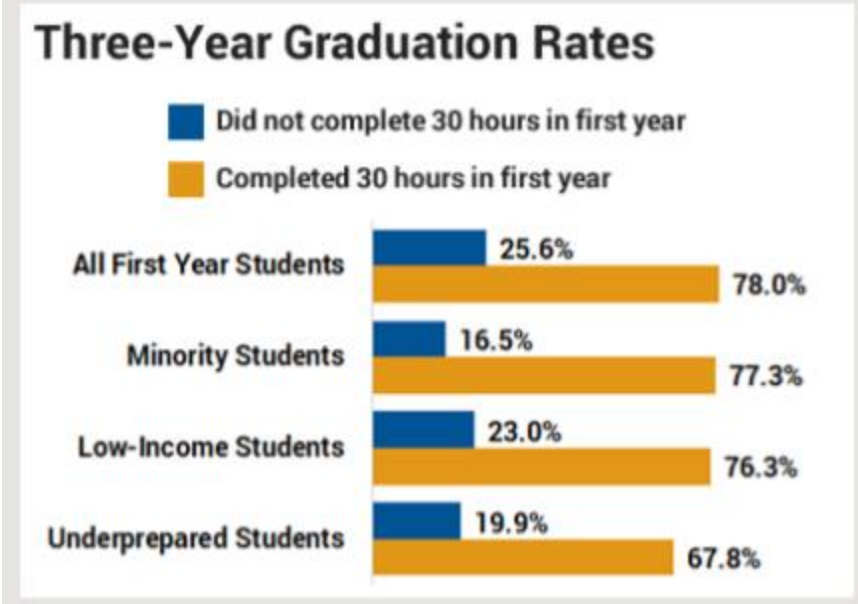


Figure 5: Impact of Finishing 30 Credit Hours the First Year on Graduation Rates of Student Cohorts at KCTCS



# Financial Impact of Momentum

### Effects\* of Taking at least 30 Credits in 1st Year on Six-Year Outcomes

Tennessee Board of Regents Institutions, FTEIC Fall 2008 Cohort

	Community College Students	University Students
Additional credits earned	22	27
Probability of degree attainment	18pp (25% vs. 43%)	19pp (38% vs. 57%)
Tuition and fees per degree	-20%	-20%
Expenditures per degree	-14%	-23%
Tuition and fees avg.	+\$1,740	+\$4,890

\*Adjusted results, controlling for student characteristics; Source: Belfield, Jenkins, Lahr, 2016.

REPORT | SEPTEMBER 2018

## Building Guided Pathways to Community College Student Success

### Promising Practices and Early Evidence From Tennessee

Davis Jenkins | Amy E. Brown | John Fink | Hana Lahr | Takeshi Yanagiura



<https://ccrc.tc.columbia.edu/media/k2/attachments/building-guided-pathways-community-college-student-success.pdf>

# Momentum Year Setup

Save Save and Close Cancel

## Momentum Year Settings

The following settings will be used by Student Progress Analysis when calculating Momentum Year progress for students.

### English Gateway Requirement

Select a Course  Select a Course Group

ENG 110

### Math Gateway Requirement

Select a Course  Select a Course Group

MATH 120

### Pathway Progress

Pathway Progress Goal (hrs): 9

Select Course Group: Momentum Year Courses

Use Students' Pathways (if available)

### Momentum Year Hours

Momentum Year Goal (hrs): 30

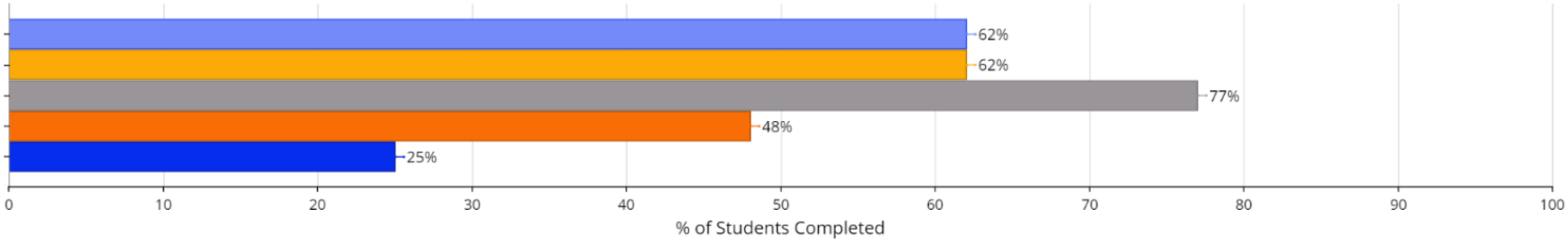
Apply transfer courses toward momentum hours

# Momentum Year Results

Momentum Year Report

Select Start Term:  Total Students: 5484

### Momentum Year Metrics for Fall Semester 2017



● Momentum Year Complete ● Momentum Year Hrs ● Pathway Progress ● Math Gateway ● English Gateway

Students At Risk (Momentum Year Complete)

Last Name ^1	First Name	ID	Program	Major	Pathway	English Gateway	Math Gateway	Pathway Progr...	Momentum Year Hours	Hours Completed
Aanenson	Geralyn	5517905	BUBBA_MK	MK		Yes	Yes	Yes	No	25
Abair	Stuart	5522362	BUPHD_FI	FI		No	No	No	Yes	75
Abarquez	Elizabet	5556350	EHEDS_SCO	SCO		No	No	No	No	24
Abbo	Edward	5557291	BUBBA_PMK	PMK		No	No	Yes	No	9
Abdelrahim	Marielle	5549742	BUEDB	EDB		No	No	No	No	18
Abesamis	Rosalind	5544354	ASAB_AN	AN		Yes	Yes	Yes	No	28
Abfall	Rubin	4575266	ASMS_BGY	BGY		Yes	Yes	Yes	No	26

Velocity Impacts  
Course Demand

# What are Pathways?

*Pathways represent the idealized way for students to complete a program of study.*

- Prescribed, sequenced set of courses or course groups a student must complete to graduate
- Serves as framework to apply academic history for planner analysis
- Makes enhanced reporting and benchmarking opportunities for student success available

# What are Student Planners?

- Student and/or advisor facing systems
- Wide range of functionality
  - Can build degree templates/pathways and assign to students as a starting point
  - Auto-update a student's progress each semester
- Data footprint of planned courses/pathways and are much less complicated than degree audit
- Data gaps
  - New students
  - # of students who participate in planning
  - # of students who complete plan

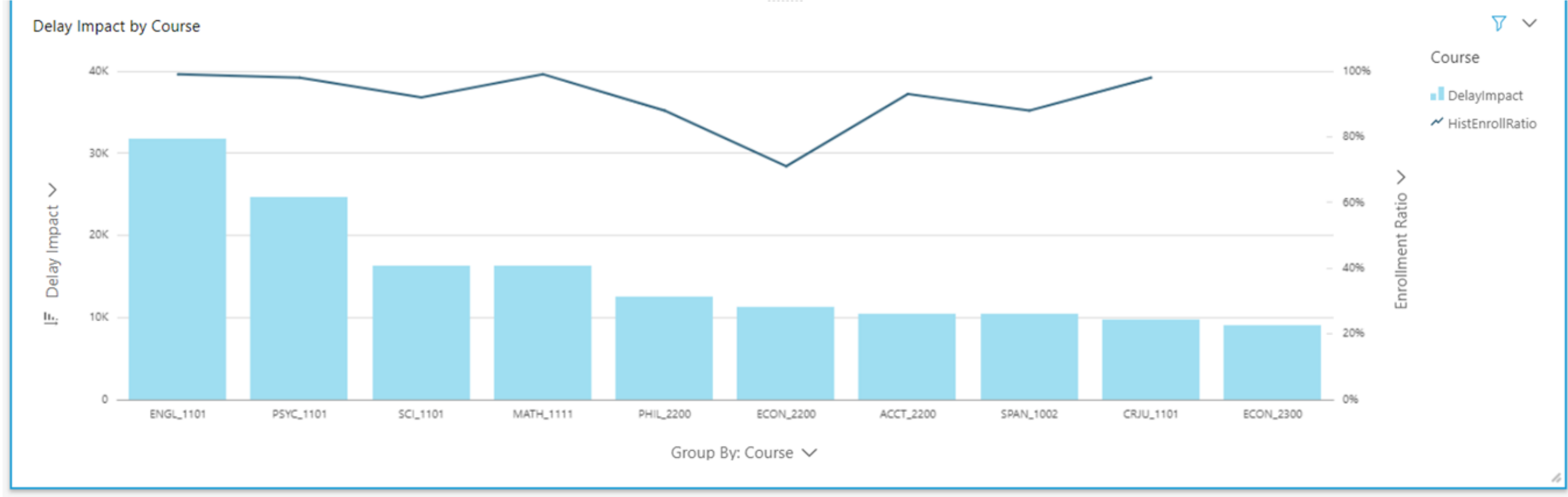
# Degree Velocity Metrics

Degree Velocity	Time To Degree (Years)	
73.75%	5.42	
Total Velocity	Credits Per Year	Productive Credits Per Year
94.9%	28.47	22.13
Productive Ratio	Credits To Complete	
77.71%	154.42	



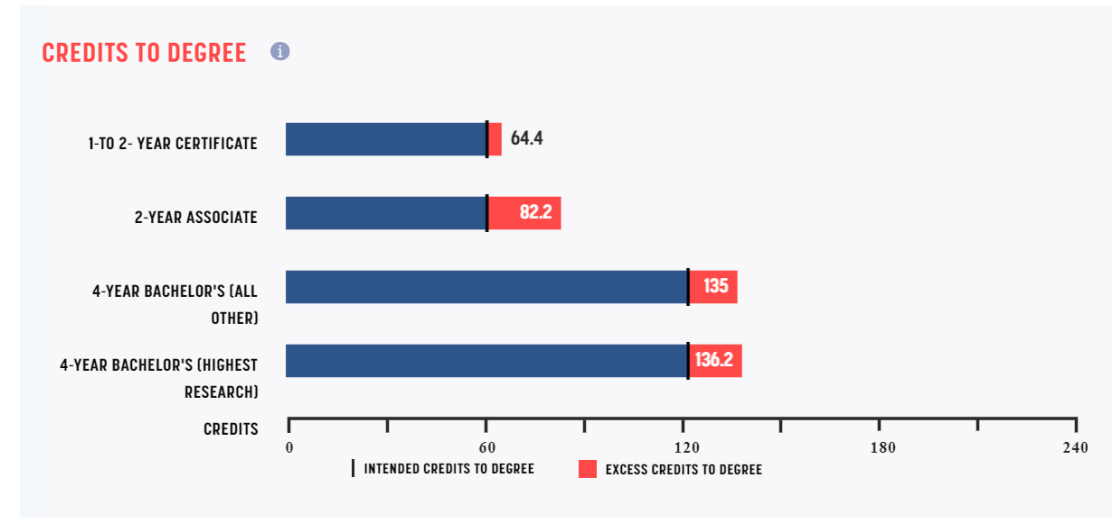
# Identifying Impact of Course Bottlenecks

Course Bottlenecks (Term Delay)



# Excess Credits

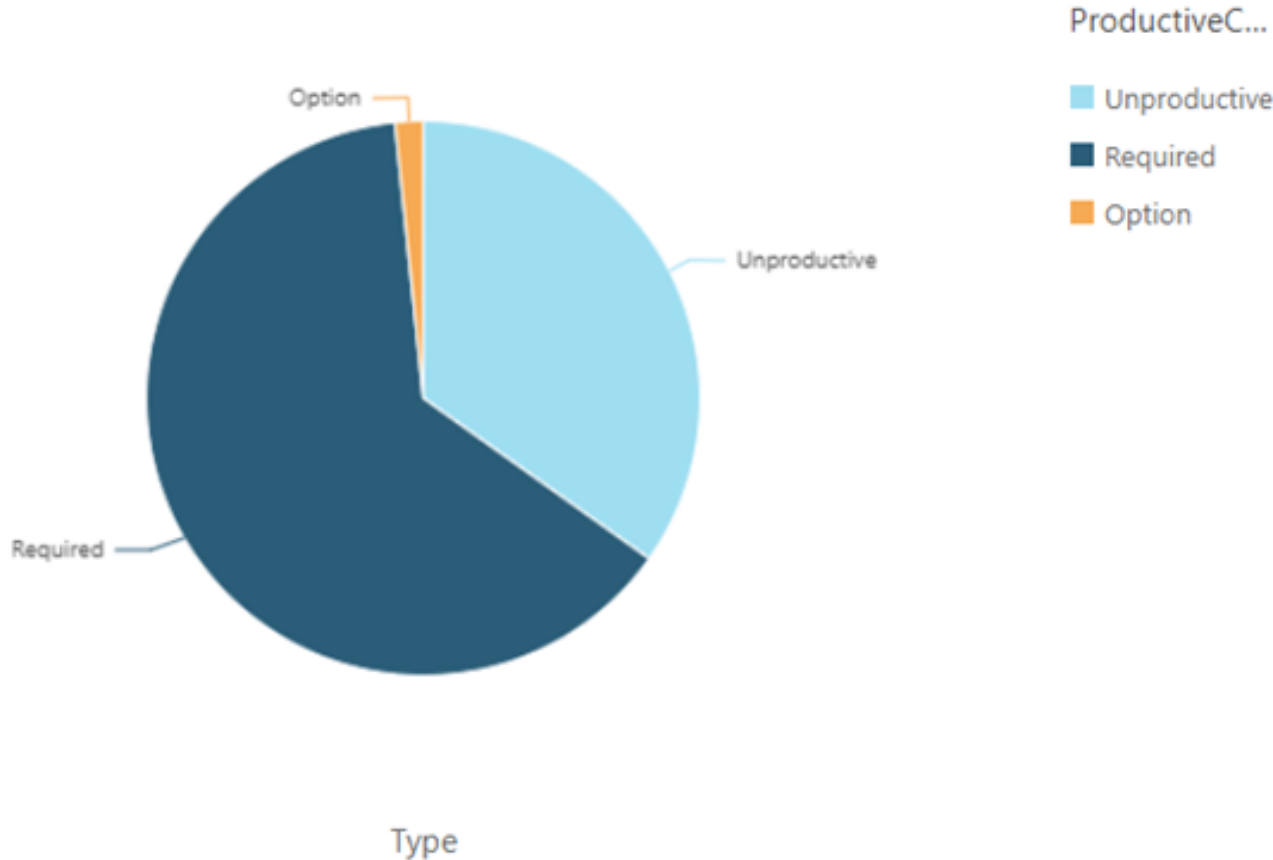
- Courses that are taken but do not apply to degree completion
  - Unsuccessful – credits attempted but not earned
  - Not applied – credits earned but do not apply to the degree
    - Change of major
    - Advising
    - Student behavior



# Excess Credit Analysis

## Unproductive Course Analysis

Registrations by Type



What's next?

