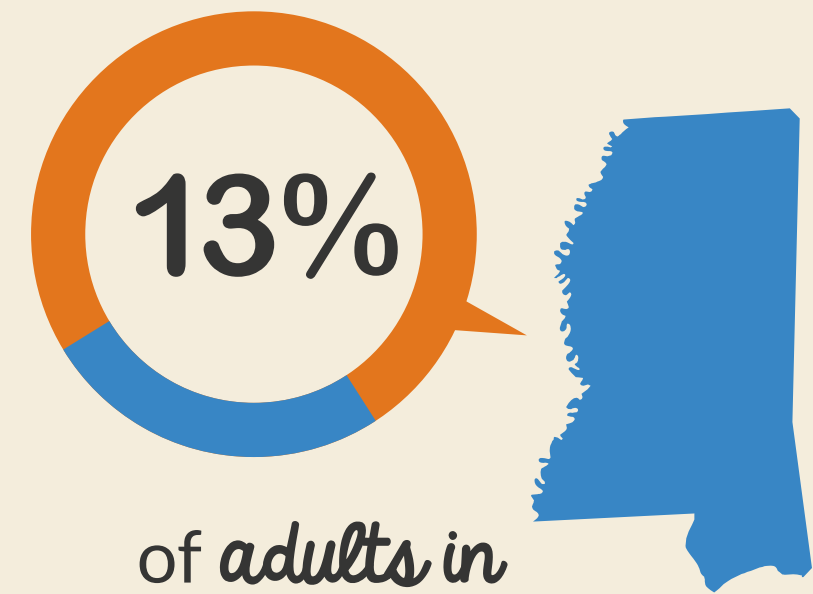
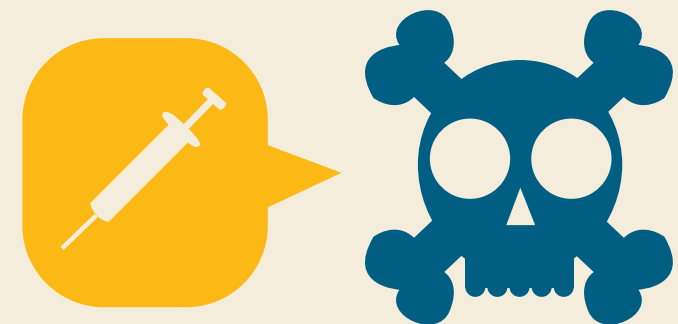


# How MISSISSIPPI is *Leading* the Way in {INNOVATION}

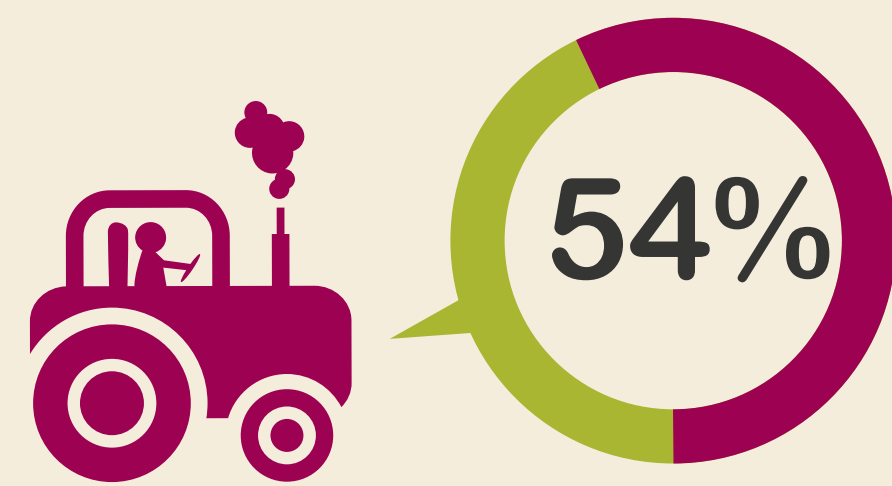
## Problem



of adults in Mississippi have DIABETES



DIABETES is the 6TH leading cause of DEATH in Mississippi



of population is in RURAL AREAS, where access to care and connectivity is limited

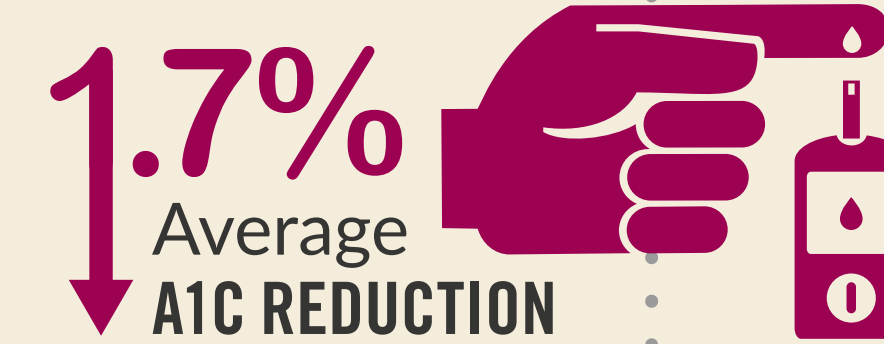
## Solution

Mississippi  
DIABETES TELEHEALTH NETWORK  
Established



Designed to measure the impact of connecting rural diabetics to chronic care managers UTILIZING A REMOTE CARE MANAGEMENT SOLUTION.

## Outcomes



Amended Medicaid rules and regulations to further support telehealth.

First state to also pay transmission fees for telehealth enabling improved connectivity in the state

Medicaid reimbursement introduced for telehealth based on preliminary results

## Projected Savings



\$339,184 COST SAVINGS of the 100 PATIENTS enrolled in the M&S Diabetes Telehealth Projects

\$189 MILLION/YEAR Total projected Medicaid savings for State of Mississippi (assumes 20% of diabetic population in M&S participates in Telehealth program)