



Raise your...

**EXPECTATIONS**

**PHP**<sup>®</sup> SYSTEMS/DESIGN

.....

BUILD IT RIGHT.



**Supporting you for over 25 years**

# Products Offered

Pipe Supports

Duct Supports

Walkways

Crossovers

Stairs/Ramps

Platforms

Equipment Supports

Cable Tray Supports

# Our Services

Engineering, Design & Layout

Specification Writing Assistance

Code Compliance Research

Technical Support

Installation

Modifications

Evaluations

Continuing Education

Pictured: Custom crossover



# Favored by industry leaders

 General Motors











Walmart 











# Why we are different

**PHP Systems/Design** is a company dedicated to building a product that surpasses excellence. We achieve sustainability through longevity, and lasting function through ingenious design.

Our customers include world leaders from a wide spectrum of industries. We have experience working with the most capable and demanding teams, who regularly place their trust in us.

We focus on operational efficiency. Our organization is run to maximize quality and service, while minimizing redundancy and overhead. The result is a great product, great service, and cost-effective pricing.

We have total control over the product design, the manufacture, and the assembly. You aren't getting parts out of a box—we make it so it works for you.

We foster a highly positive corporate culture. Our design team, which directly serves our customers on their projects, maintains the belief that there is a solution to every problem, no matter how complex.

Satisfaction is truly guaranteed—we strive for quality and service, and will accept nothing less of ourselves.

# Service Commitment

As we strive to build long-term relationships with our customers, we constantly seek more effective ways to utilize the capabilities that clearly distinguish us from our competition, such as:

Dedicated design and management team, with over forty years of experience.

A team approach, structured to meet the specific needs of even the most challenging projects.

Technical resources that help us develop a complete understanding of project and specification needs.

A quality plan tailored to guarantee our customers' satisfaction.

Creativity and flexibility in design, to better conform to customer requirements, and to adapt to the changing needs of our industry.

Experienced professionals with a commitment to customer service and follow-up.

Firm emphasis on quality, dependability, and professional ethics.

**PHP Systems/Design**

5534 Harvey Wilson Dr.

Houston, TX 77020

800.797.6585 | [www.phpspd.com](http://www.phpspd.com)



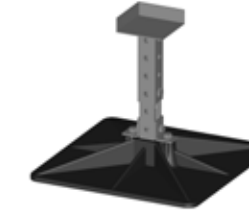
### Pipe Supports

PHP Pipe Supports are designed to support single or multiple pipes at any specified height or width, with outstanding performance and sustainability, backed by our warranty coverage. The proper selection of supports is critical to the overall performance of the roofing system.



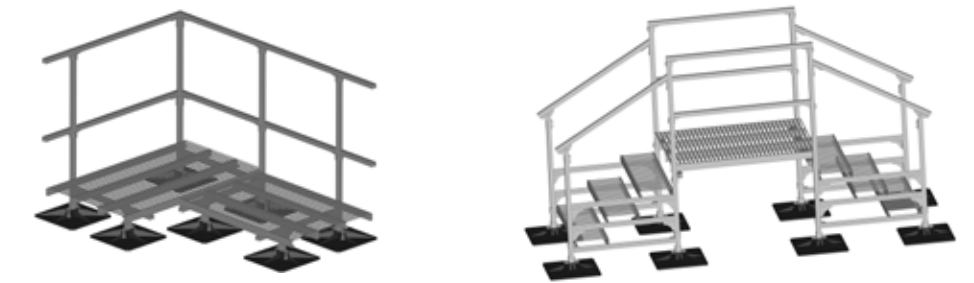
### Duct Supports

PHP Duct Supports provide both open and closed support design options, with an unsurpassed advantage in sustainability, offering both seismic and high wind applications for safety and reliability.



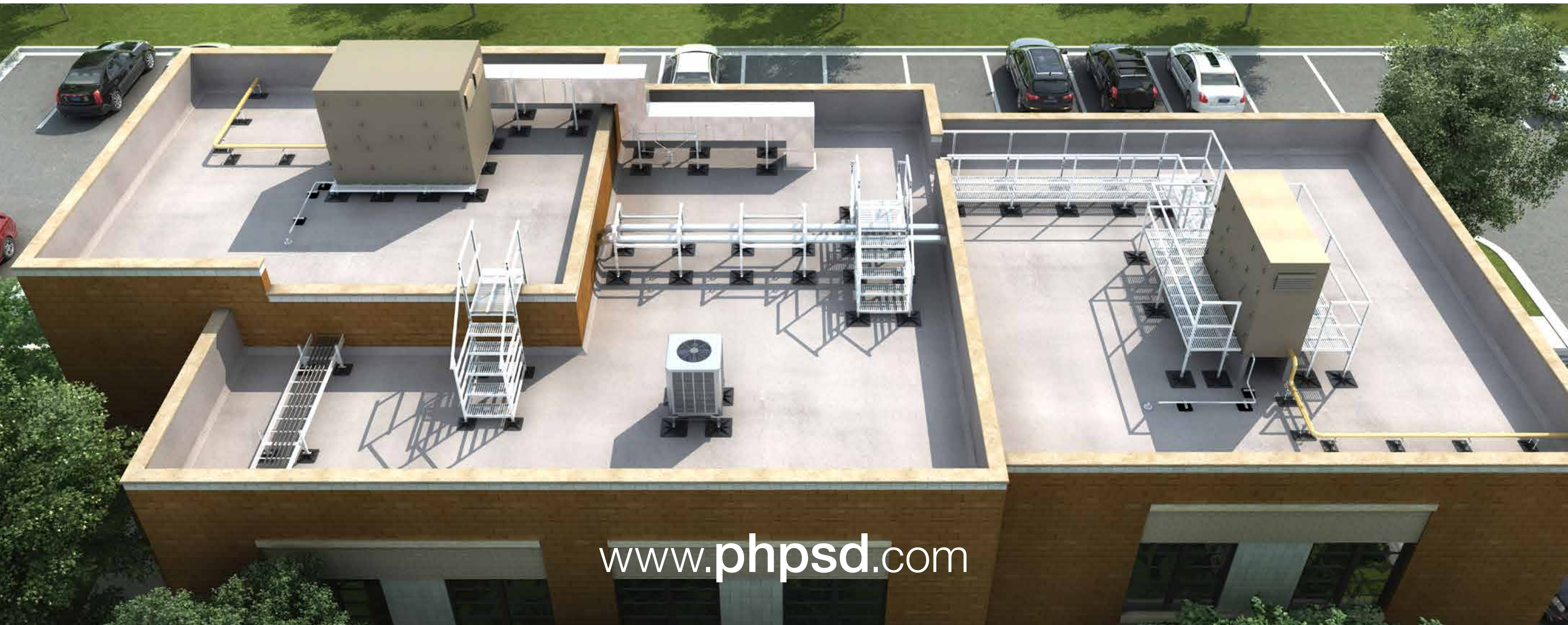
### Equipment Supports

The RTU-20 Equipment Supports are designed to support air handlers, blowers, and exhaust fans. Our engineers are able to provide design assistance on many different types of equipment supports.



### Walkways and Crossovers

PHP Walkways and Crossovers are used to prevent and direct traffic on the roofing system, providing access to areas that may be obstructed by piping, ducting, or equipment, creating safety and convenience.



### Cable Tray Supports

PHP Cable Tray Supports are available in a variety of sizes, are eco-friendly with any roofing system, and can be used on an array of commercial and industrial projects at any specified height or width.



### Seismic and High Wind

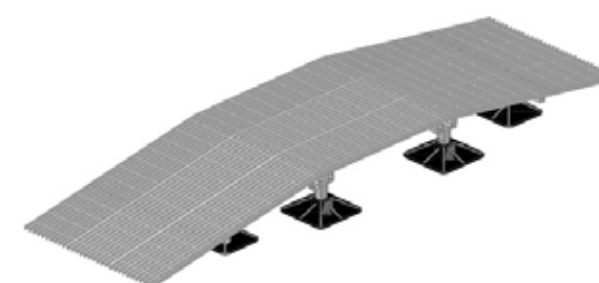


These demanding applications are specific to a project location in which code requires a licensed PE.

Our design team will work with your experts to ensure strict compliance and best design practices throughout the project.

### Stairs and Ramps

PHP Stairs and Ramps are designed to access different levels of roofs and equipment that may be out of reach. Each and every component plays an important role in the design process.



### Platforms

The PHP Platform is available in designs ranging from rooftop media, service, and smoking areas, to platforms for AHUs and small chillers. The impact of using PHP Platforms ensures the long-term durability of both the roofing system and equipment.

