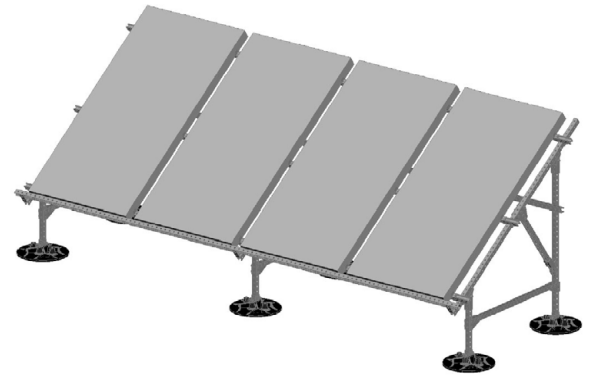




SOLAR PANEL SUPPORT

SPECIFICATION & TECHNICAL INFORMATION SHEET



DESCRIPTION:

The PHP Solar Panel Support System is designed to support a wide variety of solar panels. The system can be used for virtually any type of roof from flat roofs to roofs sloped up to 2 in 12. The supports should be spaced according to specs. Seismic and High Wind applications are available for all solar support applications.

INSTALLATION PROCEDURE:

- 1 | Layout isolation pads (provided by contractor) according to the design and layout.
- 2 | Place bases on isolation pads.
- 3 | Insert the legs of substructure frames into bases.
- 4 | Space out substructures according to the instructions.
- 5 | Attach horizontal and diagonal bracing to the substructures at designated locations.
- 6 | Make sure support panels are leveled vertically and horizontally.
- 7 | Check that the weight of panels is distributed evenly throughout the system.

STORAGE:

Store in the original, unopened containers, under cover, until needed for installation.

LEED INFORMATION:

Frame/Steel
Post Consumer Recycled Content: 0%
Post Industrial Recycled Content: 25%

BASE MATERIAL:

Post Consumer Recycled Content: 80%
Post Industrial Recycled Content: 20%
Manufacturing Location: Houston, TX

PRODUCT DATA:

Property:

Base:

Size:

Base Weight:

Base Material:

Base Color:

Base Density:

Minimum Performance:

18" x 18" x 3" or 18" round
7 lbs and 10-1/2 lbs

Injection molded high density/high impact polypropylene with UV-inhibitors and Antioxidants

Black

55.8 lb/cu ft (894 kg/cu m)

Carbon Steel Framing:

Carbon Steel Finish: Hot dip galvanized per ASTM A 123

Hardware:

Nuts and Washers: Hot Dip Galvanized or 304 Stainless Steel