

# Modern Car Breakdowns and How to Avoid Them

Dead batteries, flat tires, and key troubles contributed to 32 million drivers requesting roadside assistance last year.\* Surprisingly, many of these were new vehicles. So, what's causing these shiny new cars to conk out?

## 3 Reasons Newer Cars are Breaking Down More than Ever

Let's take a look at some modern features and issues that may lead to bad news for a car owner.



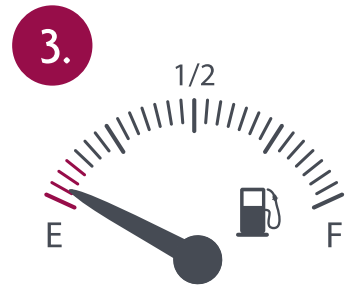
### Keyless Entry Remotes

When left in the vehicle, keys continue to transmit signals to the receiver, which can drain the battery.



### Lack of Spare Tires

In an effort to reduce weight and boost fuel economy, many new vehicles have eliminated spare tires. Now, only 36 percent of models come standard with a run-flat or tire inflation kit—neither of which are guaranteed to work.

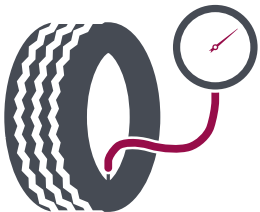


### Low Fuel Alerts

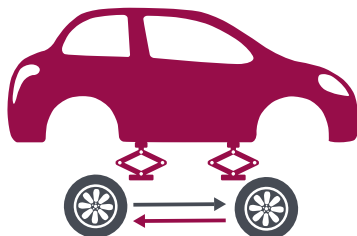
With the benefit of a built-in reminder, people have become accustomed to pushing their vehicles to the limit on fuel. It's a risky play that can leave some stranded on the side of the road.

## Tips to Avoid Breakdown\*

Make maintenance a priority



Check tire pressure  
once a month



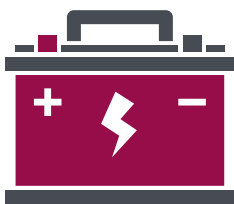
Rotate tires every  
5,000-8,000 miles

Hold on to your keys



**ALWAYS**  
take your keys with you  
when you leave the car

Know your battery power



Have your battery tested after  
**three years,**  
then annually  
thereafter

Have a back up plan—  
like **Fortegra Automotive Solutions**



No matter what  
happens or where,  
**you'll have**  
peace of mind



Value-added benefits  
can ease the  
**burden on your**  
wallet

Don't wait until it's too late. Call us today at 866.961.9529 to sign up for Fortegra Automotive Solutions: roadside assistance, repairs, and more—all just a phone call away.



For more information visit [fortegra.com](http://fortegra.com)

\*Source: <http://finance.yahoo.com/news/the-surprising-reasons-why-more-cars-broke-down-in-2015-than-ever-before-160214858.html>