



Care@Home™

Cellular and Ethernet
Version

C7000 and Emergency Pendant Advanced Kit

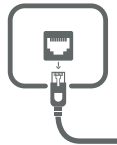
Getting Started



The Best Location for the C7000



Good cellular
reception



Near network
port



Convenient for
resident to access



Where speakerphone
can be heard throughout
premises



Setting Up the C7000



1 Place thumb in oval hole and lift off the cover

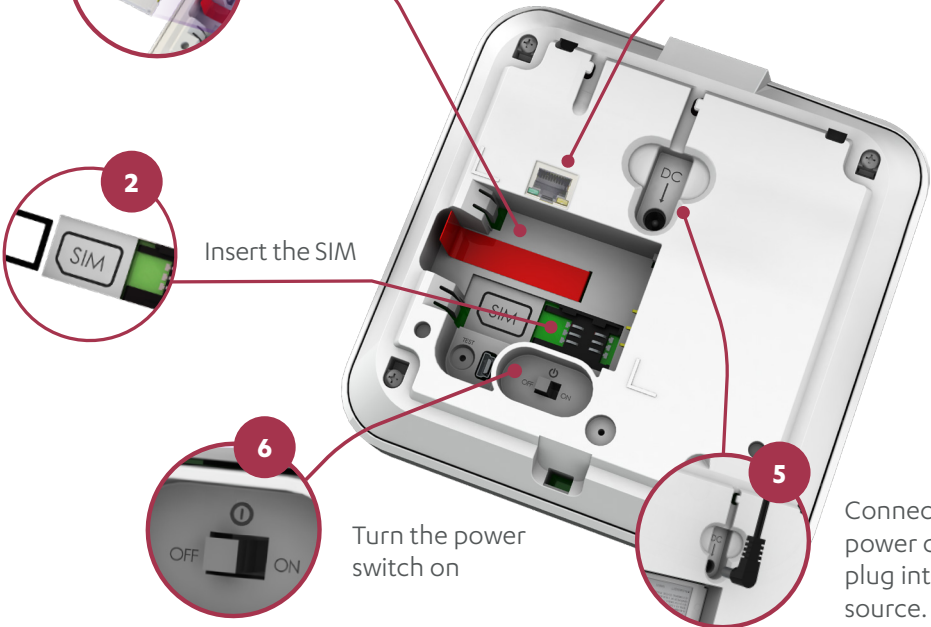
3 Insert the backup battery

4 Plug in Ethernet cable and attach to network port

2 Insert the SIM

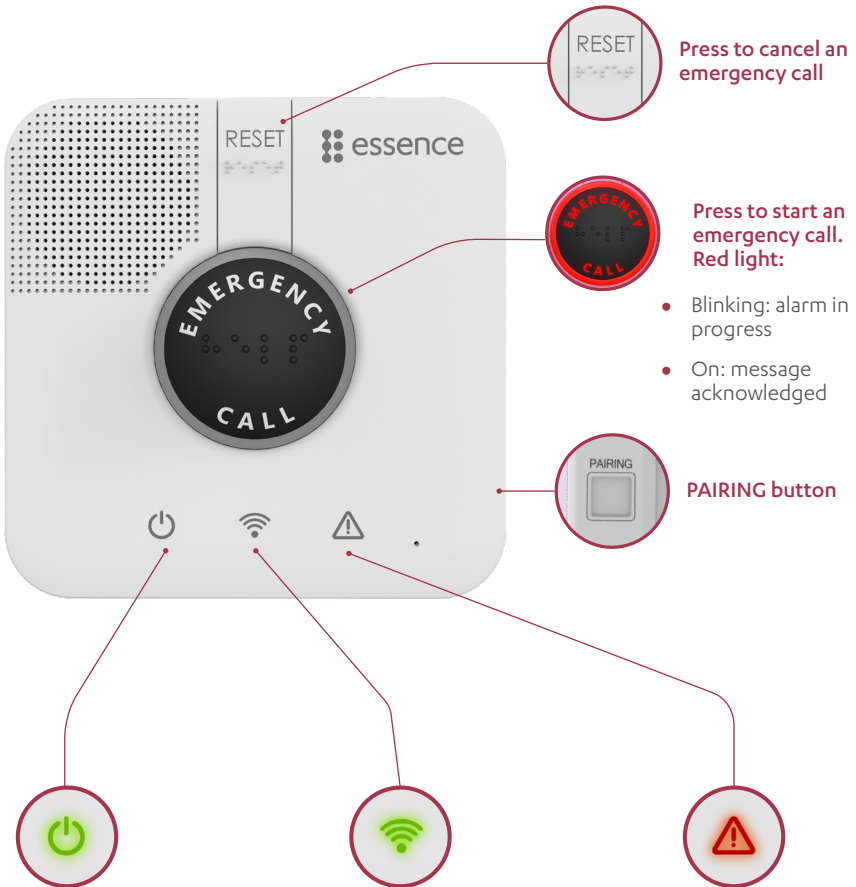
6 Turn the power switch on

5 Connect the power cable and plug into a power source. Then close the back cover





Using the C7000



Shows power status

- On: AC power connected
- Blinking: using battery
- Off: no power

Shows communication status

- **Green:** if on, ready for call. If blinking, message being sent
- **Red:** if on, communication failure
- **Orange:** active conversation

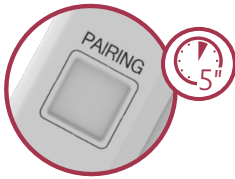
Shows problem status

- On: malfunction in the C7000 or a peripheral
- Blinking: supervision lost, or low battery in a peripheral

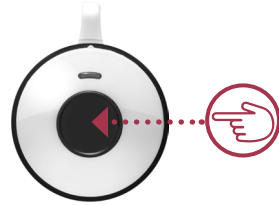


Setting Up the Pendant

1 Press the PAIRING button for 5 seconds.



2 Press the button on the pendant.



The panel beeps and the EMERGENCY button blinks blue.



The Pendant in Action



The EPA blinks **red** when the panic button is pressed



The EPA lights **green** when a fall is detected or the battery is replaced

For more information, see: <http://www.essence-grp.com/resources/smart-care-download.html>

Legal notice: http://www.essence-grp.com/html/concerning_documents.html

www.essence-grp.com • info@essence-grp.com

