



# Care@Home™

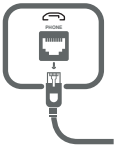
**PSTN and Ethernet**  
Version

## C7000 and Emergency Pendant Plus Kit

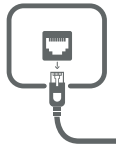
### Getting Started



### The Best Location for the C7000



Near a phone  
jack



Near a network  
port



Convenient for  
resident to access



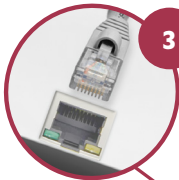
Where speakerphone  
can be heard throughout  
premises



# Setting Up the C7000



**1** Place thumb in oval hole and lift off the cover



**3** Plug in Ethernet cable and attach to network port



**2** Insert the backup battery



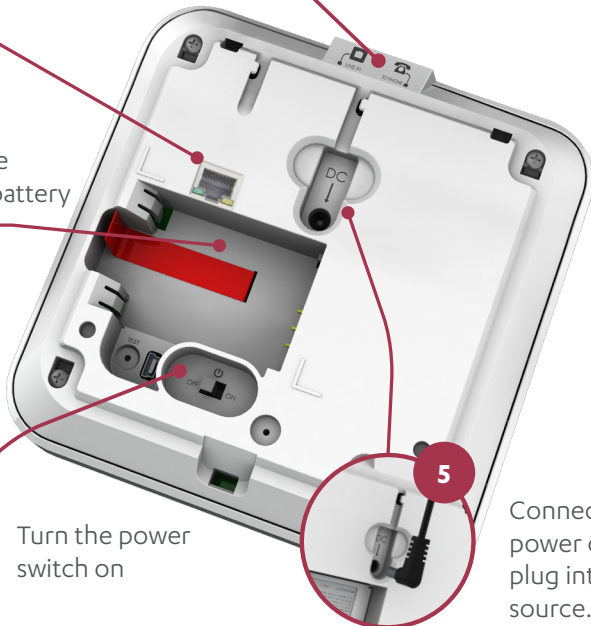
Take the cable out of the existing phone, and connect it to the LINE IN socket



Use the new cable from the kit to connect the phone to the TO PHONE socket



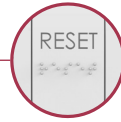
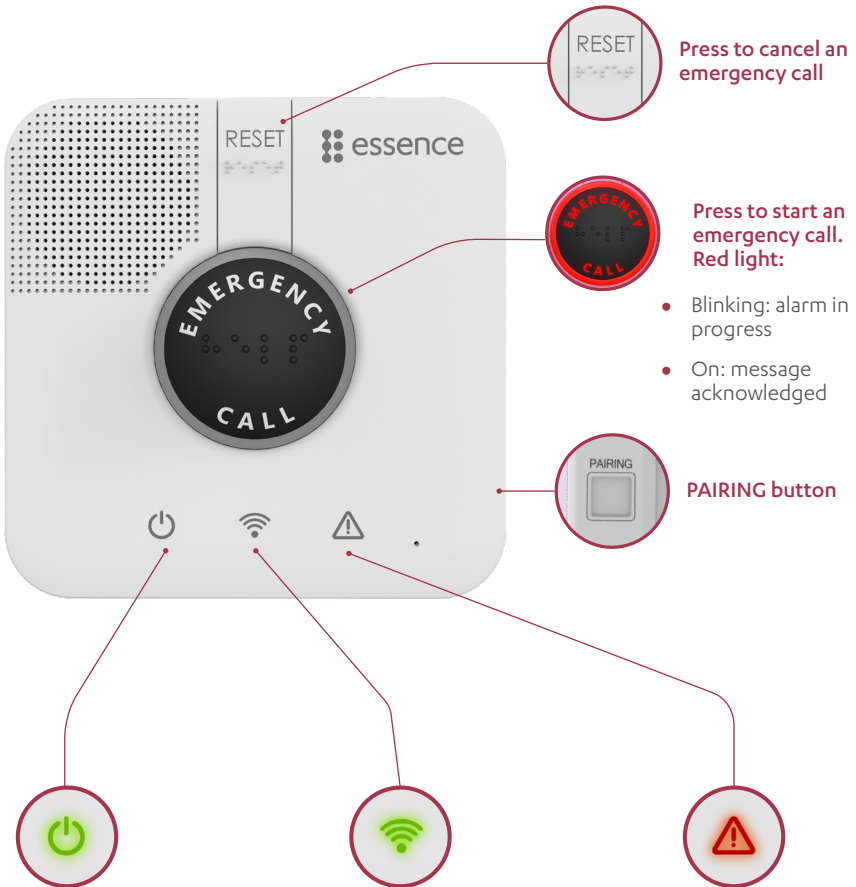
**6** Turn the power switch on



**5** Connect the power cable and plug into a power source. Then close the back cover



## Using the C7000

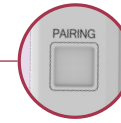


Press to cancel an emergency call



Press to start an emergency call.  
Red light:

- Blinking: alarm in progress
- On: message acknowledged



PAIRING button



### Shows power status

- On: AC power connected
- Blinking: using battery
- Off: no power



### Shows communication status

- **Green**: if on, ready for call. If blinking, message being sent
- **Red**: if on, communication failure
- **Orange**: active conversation



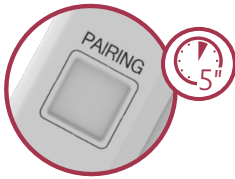
### Shows problem status

- On: malfunction in the C7000 or a peripheral
- Blinking: supervision lost, or low battery in a peripheral

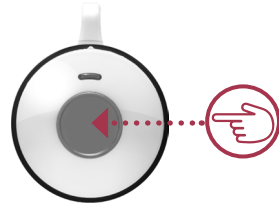


# Setting Up the Pendant

**1** Press the PAIRING button for 5 seconds.



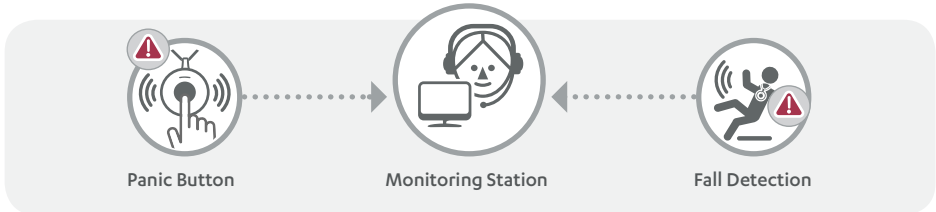
**2** Press the button on the pendant.



The panel beeps and the EMERGENCY button blinks blue.



# The Pendant in Action



The EPA blinks **red** when the panic button is pressed



The EPA lights **green** when a fall is detected or the battery is replaced

For more information, see: <http://www.essence-grp.com/resources/smart-care-download.html>

**Legal notice:** [http://www.essence-grp.com/html/concerning\\_documents.html](http://www.essence-grp.com/html/concerning_documents.html)

[www.essence-grp.com](http://www.essence-grp.com) • [info@essence-grp.com](mailto:info@essence-grp.com)

