



Care@Home™

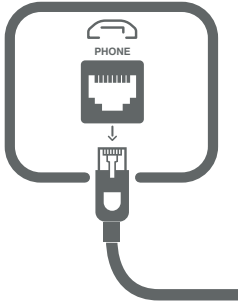
PSTN and Ethernet
Version

C7000 Series Getting Started

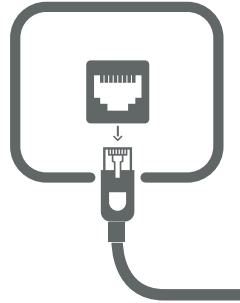




The Best Location for the C7000



Near a phone jack



Near a network port



Convenient for resident to access



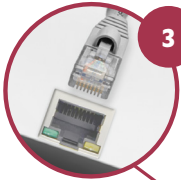
Where speakerphone can be heard throughout premises



Setting Up the C7000



1 Place thumb in oval hole and lift off the cover



3 Plug in Ethernet cable and attach to network port



Take the cable out of the existing phone, and connect it to the LINE IN socket



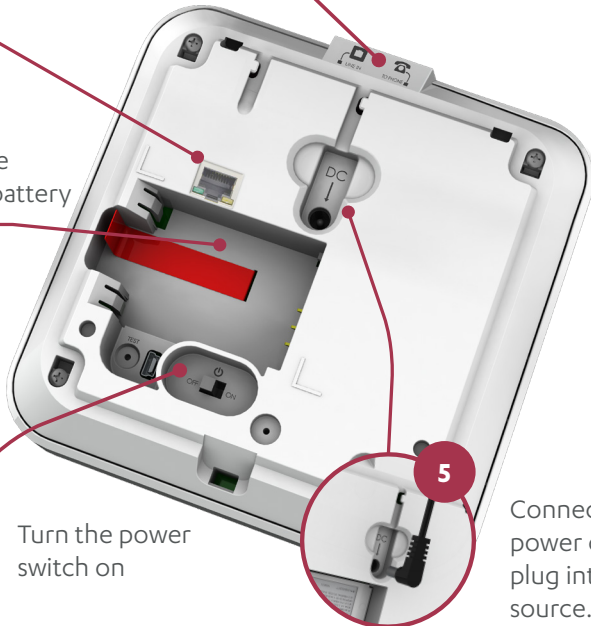
Use the new cable from the kit to connect the phone to the TO PHONE socket



2 Insert the backup battery



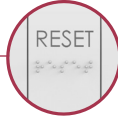
6 Turn the power switch on



5 Connect the power cable and plug into a power source. Then close the back cover



Using the C7000



Press to cancel an emergency call



Press to start an emergency call. Red light:

- Blinking: alarm in progress
- On: message acknowledged



Shows power status

- On: AC power connected
- Blinking: using battery
- Off: no power



Shows communication status

- **Green**: if on, ready for call. If blinking, message being sent
- **Red**: if on, communication failure
- **Orange**: active conversation



Shows problem status

- On: malfunction in the C7000 or a peripheral
- Blinking: supervision lost, or low battery in a peripheral

For more information, see: <http://www.essence-grp.com/resources/smart-care-download.html>

Legal notice: http://www.essence-grp.com/html/concerning_documents.html

www.essence-grp.com • info@essence-grp.com

