



# Care@Home™

## Control Panel Getting Started



The heart of Essence's Care@Home™ platform, featuring cellular communications and two-way voice capabilities.



## The Best Location for the Control Panel



Good cellular reception



Where speakerphone can be heard throughout premises



Convenient for resident to access



Control Panel

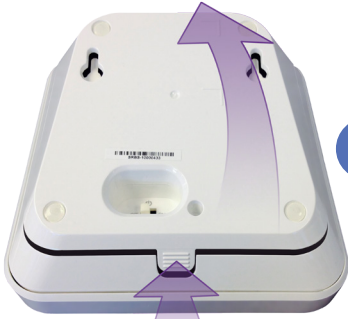
At least 2 m (6 ft.)  
from other devices



Motion detector



# Setting Up the Control Panel



1 Push here

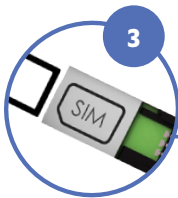
2 Lift the cover off



4 Insert the backup battery



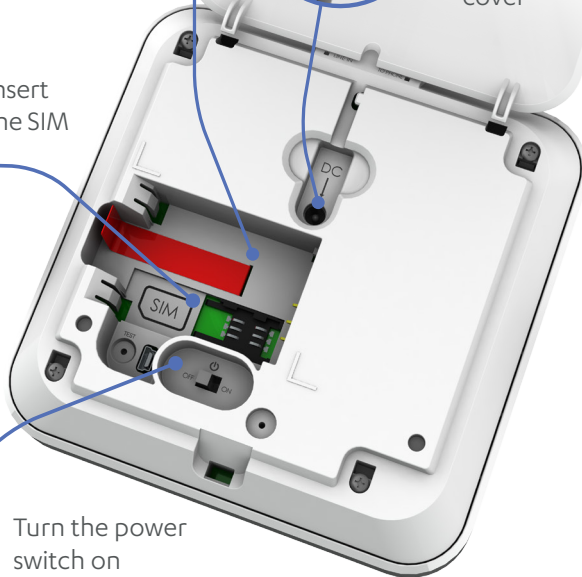
5 Connect the power cable and plug into a power source. Then close the back cover



3 Insert the SIM

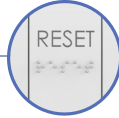


6 Turn the power switch on





# Using the Control Panel



Press to cancel an emergency call



Press to start an emergency call. Red light:

- Blinking: alarm in progress
- On: message acknowledged



## Shows power status

- On: AC power connected
- Blinking: using battery
- Off: no power



## Shows communication status

- **Green:** if on, ready for call. If blinking, message being sent.
- **Red:** if on, failure in cellular network. If blinking, cellular reception is poor
- **Orange:** active conversation



## Shows problem status

- On: malfunction in the control panel or a peripheral
- Blinking: supervision lost, or low battery in a peripheral

For more information, see: <http://www.essence-grp.com/resources/smart-care-download.html>

**Legal notice:** [http://www.essence-grp.com/html/concerning\\_documents.html](http://www.essence-grp.com/html/concerning_documents.html)

[www.essence-grp.com](http://www.essence-grp.com) • [info@essence-grp.com](mailto:info@essence-grp.com)

