



Care@Home™



Cellular Version

C7000 Series Getting Started

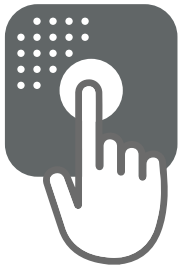




The Best Location for the C7000



Good cellular reception



Convenient for resident to access



Where speakerphone can be heard throughout premises



C7000

At least 2 m (6 ft.)
from other devices



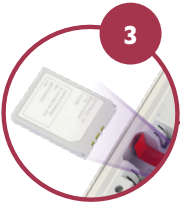
Motion detector



Setting Up the C7000



1 Place thumb in oval hole and lift off the cover



3 Insert the backup battery



2 Insert the SIM

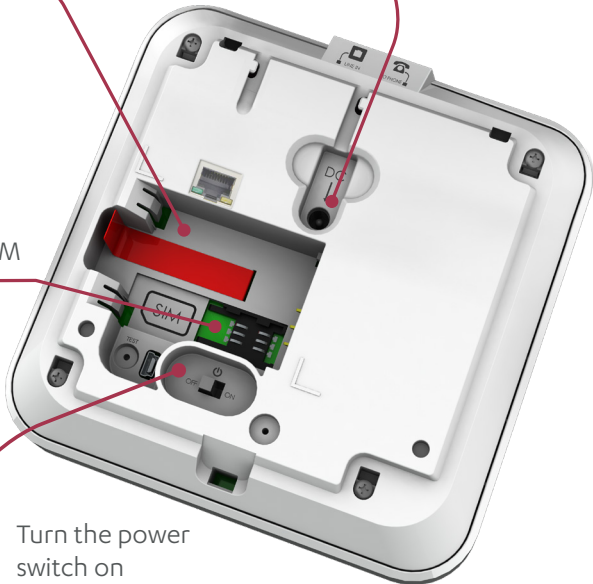
Cellular version only



4 Connect the power cable and plug into a power source. Then close the back cover

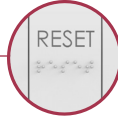


5 Turn the power switch on





Using the C7000



Press to cancel an emergency call



Press to start an emergency call. Red light:

- Blinking: alarm in progress
- On: message acknowledged



Shows power status

- On: AC power connected
- Blinking: using battery
- Off: no power



Shows communication status

- Green: if on, ready for call. If blinking, message being sent
- Red: if on, communication failure
- Orange: active conversation



Shows problem status

- On: malfunction in the C7000 or a peripheral
- Blinking: supervision lost, or low battery in a peripheral

For more information, see: <http://www.essence-grp.com/resources/smart-care-download.html>

Legal notice: http://www.essence-grp.com/html/concerning_documents.html

www.essence-grp.com • info@essence-grp.com

