

# Care@Home™

Pro Installation

Tips

ESUGSC042

Revision 1.0

November 2017

## Table of Contents

1.	Introduction .....	3
2.	Do's and Don'ts.....	4
2.1.	All Peripherals .....	4
2.2.	Door/Window Sensor (MGLS).....	7
2.3.	Motion Detector (PIR) .....	10
3.	Avoiding Overlapping Coverage .....	12
3.1.	What is Overlapping Coverage?.....	12
3.2.	How Do You Avoid Overlapping Coverage? .....	14
4.	Avoiding Overextended Coverage .....	15
4.1.	What is Overextended Coverage?.....	15
4.2.	How Do You Avoid Overextended Coverage? .....	16
5.	Dealing with a Combined Bathroom.....	17
6.	Dealing with Dining Rooms .....	19
7.	Dealing with Additional Rooms .....	20
8.	Example Installations .....	21
9.	Three Things You Must Do at the End of Every Installation.....	24
	Legal Notice.....	25

## 1. Introduction

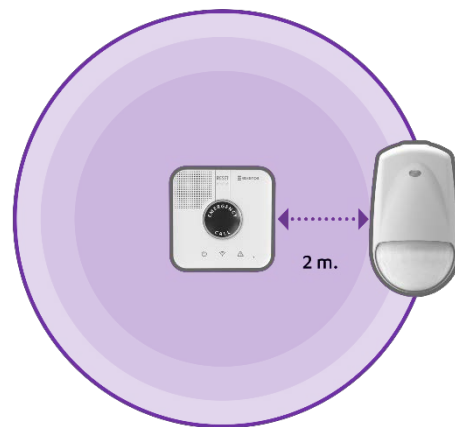
For Care@Home to function properly, it is essential that the system is properly installed on the resident's premises. This document contains tips and practical advice to help you achieve a successful installation every time.

## 2. Do's and Don'ts

### 2.1. All Peripherals

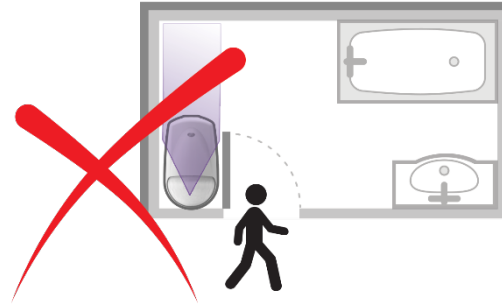
#### Do:

- Install **at least 2 m from** the control panel

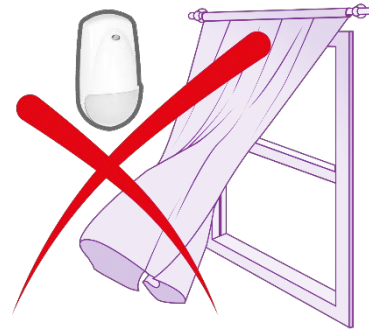


## Don't:

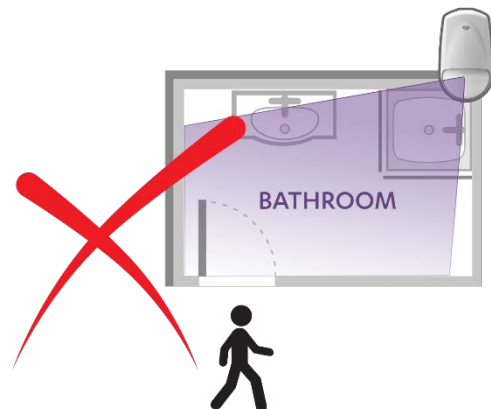
- Install behind a door



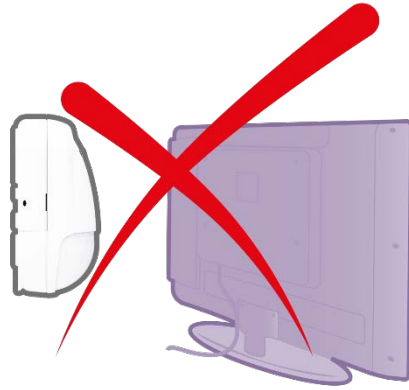
- Install behind a curtain



- Install inside a bath or shower



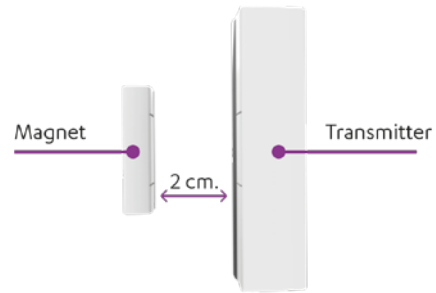
- Install behind a TV



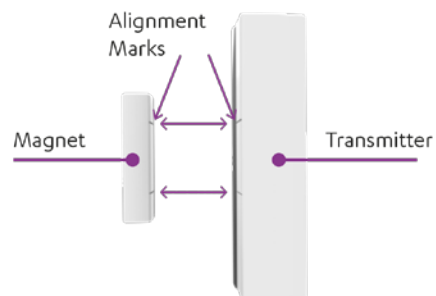
## 2.2. Door/Window Sensor (MGLS)

### Do:

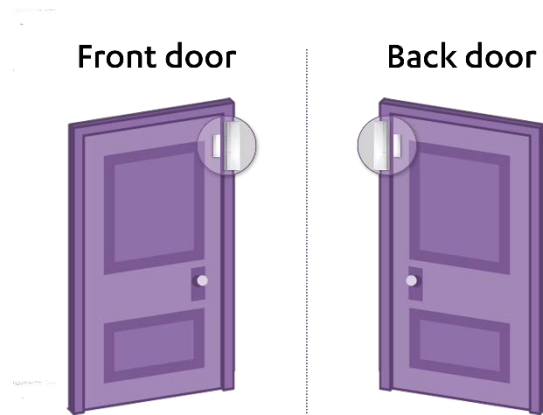
- Ensure the magnet and transmitter are **no more than 2 cm apart**.



- Ensure the magnet and transmitter are properly aligned.



- Ensure **all** exits are covered.

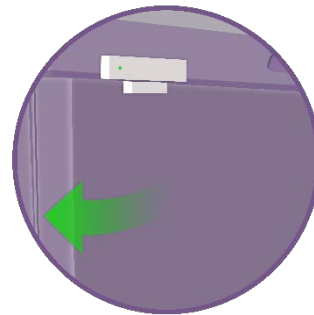


- Ensure the fridge door – and **not** the freezer door – is covered.





- Test the sensor by opening and closing the door, to see if the LED lights red then green.



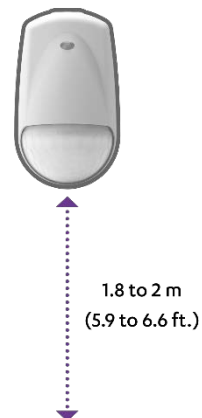
## 2.3. Motion Detector (PIR)

### Do:

- Install the right way up.



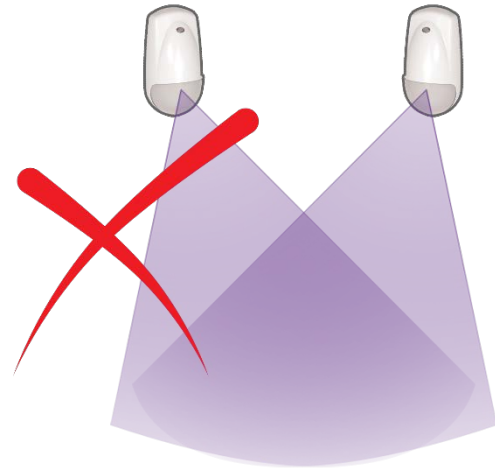
- Install at the right height



- Install a **pet immune lens** if there are any pets on the premises.



- Avoid coverage that overlaps with another PIR or an IPD. Refer to 3 Avoiding Overlapping Coverage on page 12.




- Avoid coverage that extends out of a room. Refer to 4 Avoiding Overextended Coverage on page 15.



### 3. Avoiding Overlapping Coverage

If PIRs or IPDs overlap, this gives misleading data and can create false alarms. It is therefore important to follow recommended installation practices.

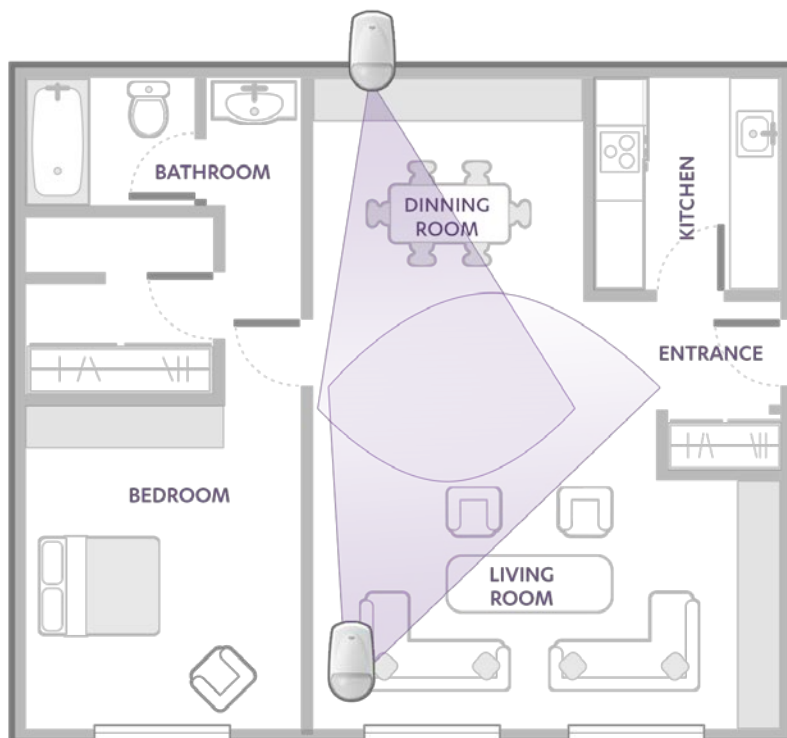
---

 **EXCEPTION:** You can have overlapping coverage in a combined bathroom, so long as the toilet PIR has an optical limiter. Refer to 5 Dealing with a Combined Bathroom on page 17.

---

#### 3.1. What is Overlapping Coverage?

Here is an example of overlapping coverage.



**Figure 1: Overlapping Coverage**

- The coverage of the sensor in the living room extends into the dining room.

## Avoiding Overlapping Coverage

---

- The coverage of the sensor in the dining room extends into the living room.
- When the resident is in either room, both sensors may detect the resident's presence and so report both types of activity.

### 3.2. How Do You Avoid Overlapping Coverage?

To solve the situation shown in 3.1 What is Overlapping Coverage? on page 12, the installation should be something like the following.

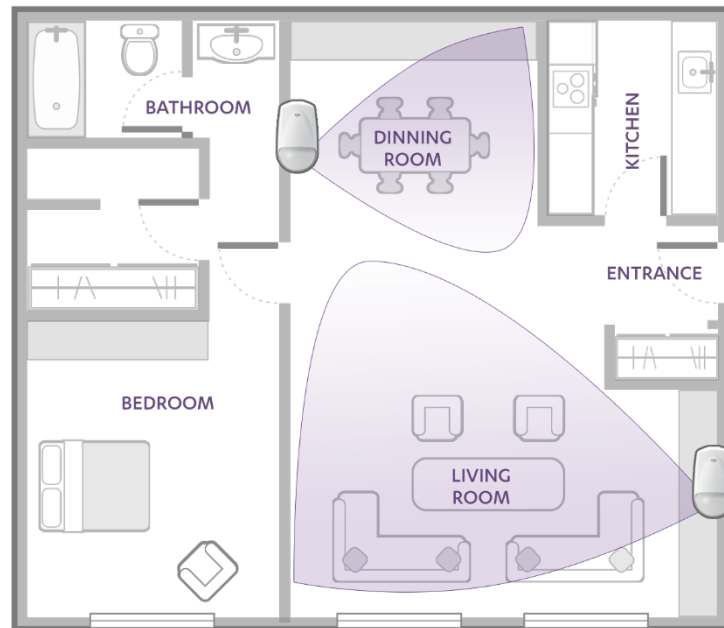


Figure 2: Avoiding Overlapping Coverage

## 4. Avoiding Overextended Coverage

If the coverage of PIRs or IPDs overextends, this can also give misleading data and can create false alarms. Again, it is therefore important to follow recommended installation practices.

### 4.1. What is Overextended Coverage?

Here's an example of overextended coverage.

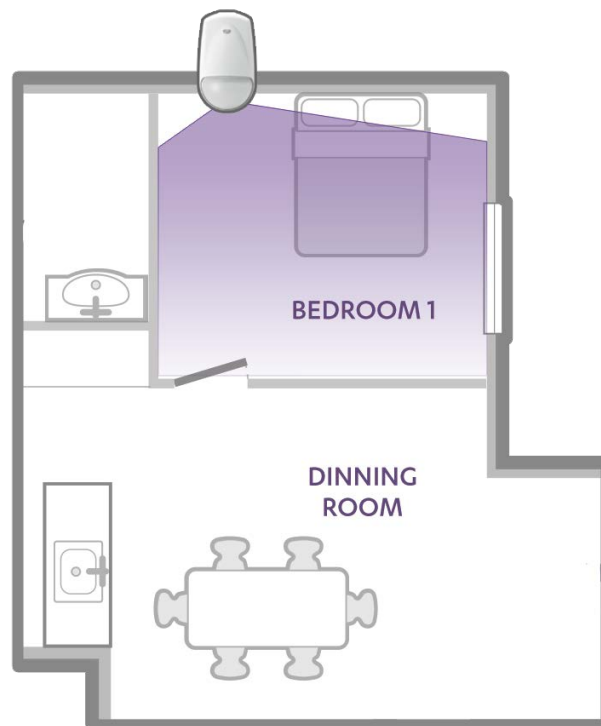


Figure 3: Door Closed

So long as the door is closed, there is no problem. But when the door is opened, it means the detector's coverage is extended into the corridor. This means that it detects somebody moving in the corridor and records that incorrectly as an activity in the room.

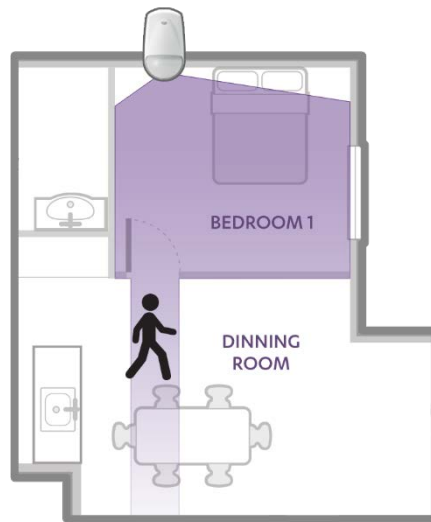


Figure 4: Door Open

#### 4.2. How Do You Avoid Overextended Coverage?

You avoid overextended coverage by ensuring the detector is not directly facing a door. Here's how the detector should be installed:

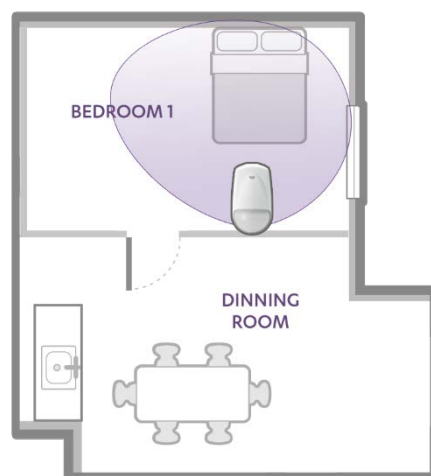


Figure 5: Avoiding Overextended Coverage



## 5. Dealing with a Combined Bathroom

A combined bathroom is a bathroom that includes a toilet. Because this type of bathroom includes two types of activities – bathroom and restroom - it is important to ensure that both activities are monitored separately.

If there is a combined bathroom, you must install an optical limiter in the restroom PIR, to capture the restroom activities. Refer to ESUGSC008 Care@Home PIR User Guide.

In a combined bathroom:

- The optical limiter should always be fitted in the toilet PIR.
- If the optical limiter is fitted in the toilet PIR:
  - Do not put an optical limiter in the bathroom PIR
  - Overlapping coverage between the toilet and the bathroom is acceptable
  - Contact the monitoring station to ensure the combined bathroom was set up in Care@Home.

For example, here's a combined bathroom:

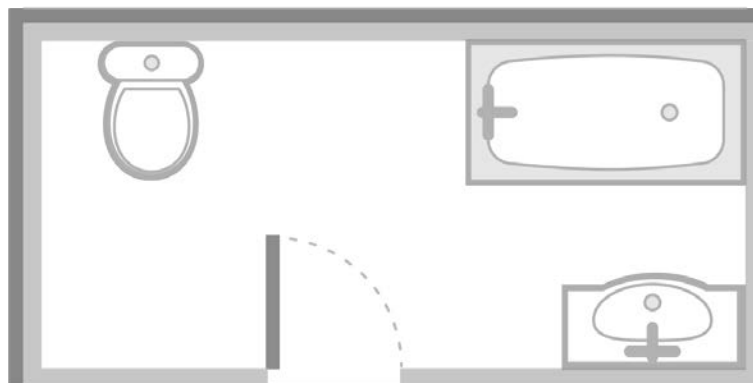
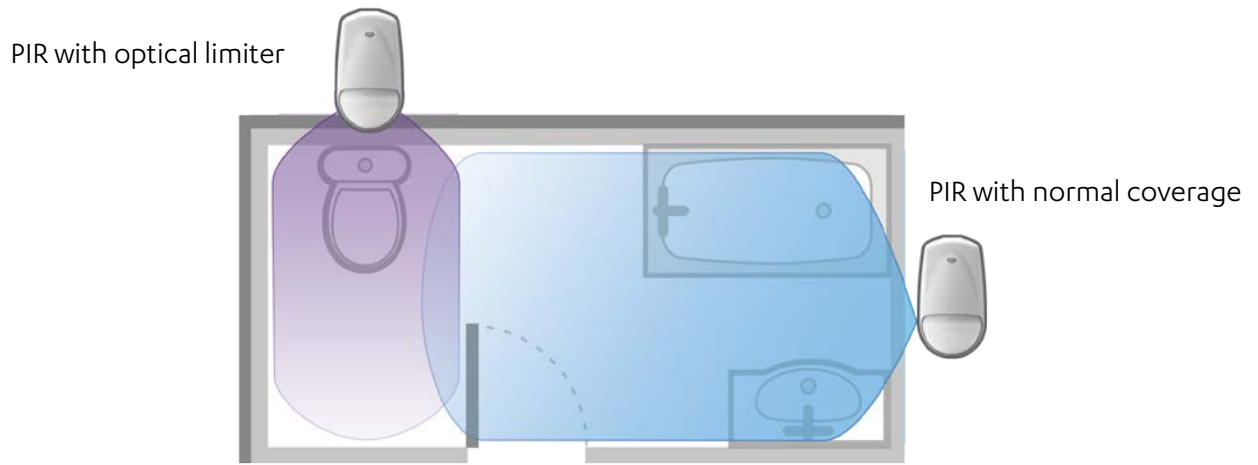


Figure 6: Combined Bathroom

Here is a recommended installation approach:



**Figure 7: Combined Bathroom Installation**

## 6. Dealing with Dining Rooms

In Care@Home™, the dining room is where the resident eats meals. You must install the dining room PIR in that room. For example, if the resident eats meals in the kitchen, you must install the dining room PIR in the kitchen. In other words, you must install the dining room PIR according to where meals are consumed.

## 7. Dealing with Additional Rooms

An additional room is a room:

- For which there is no PIR in the standard Care@Home™ kit, **and**
- In which the resident spends 30 minutes or more in a typical day

In **each** additional room, you must:

- Fit an additional PIR (or IPD)
- Contact the monitoring station to ensure the additional sensor was added through CMS

## 8. Example Installations

This section includes examples of typical Care@Home™ installations.

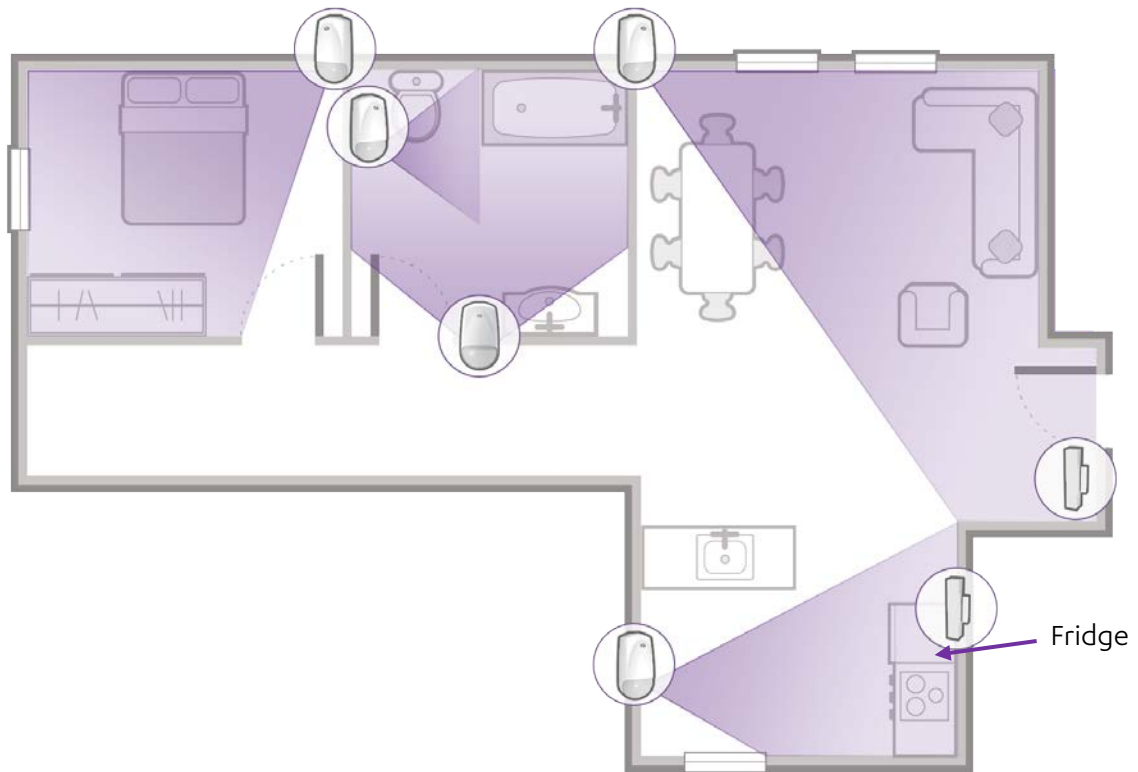


Figure 8: Example A

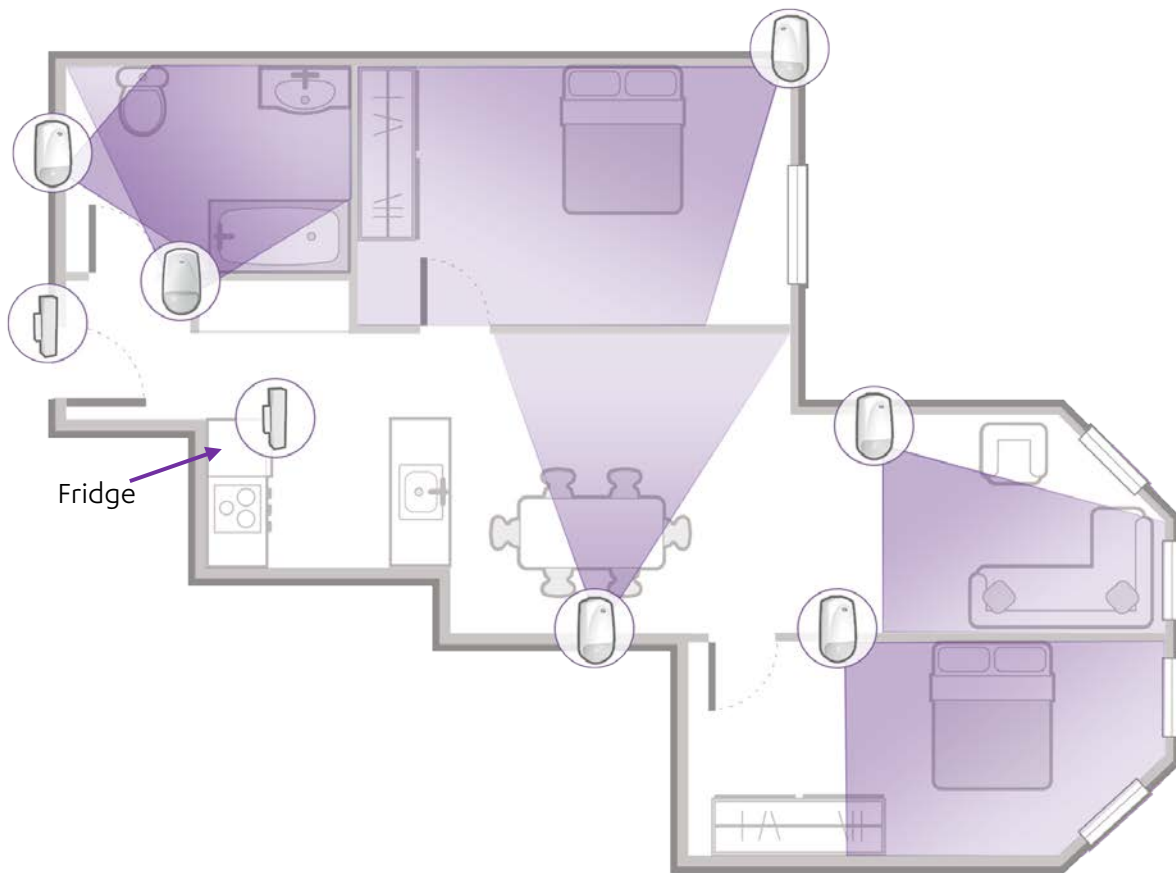


Figure 9: Example B

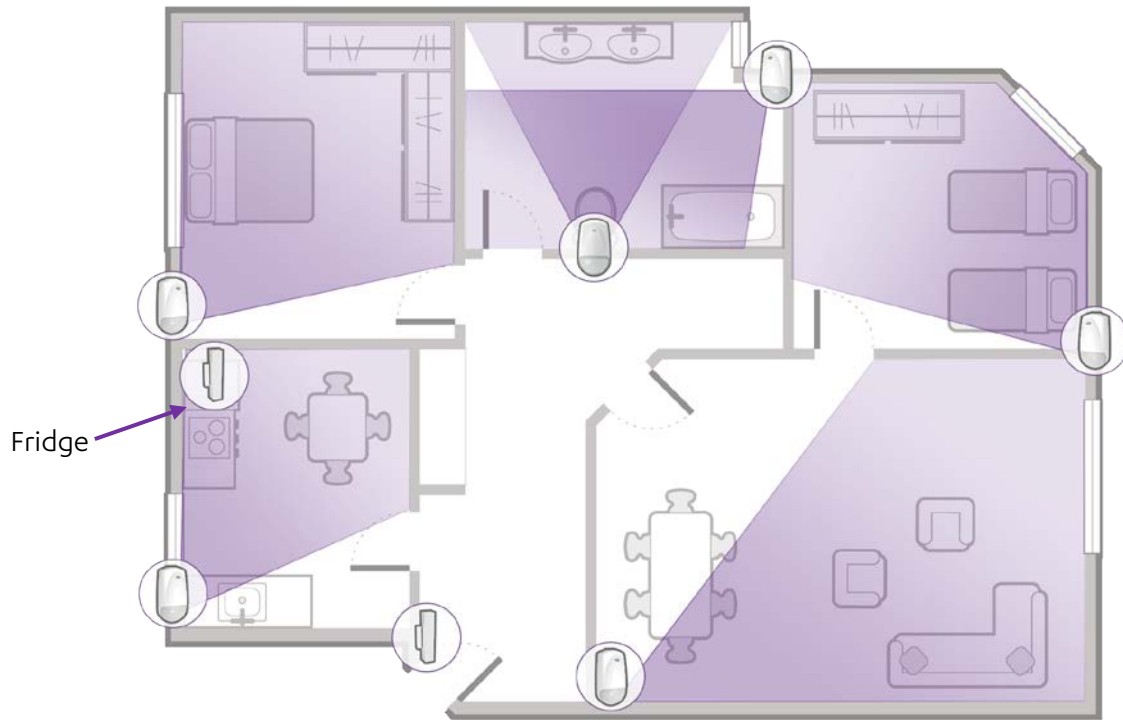


Figure 10: Example C

## 9. Three Things You Must Do at the End of Every Installation

1. Check with the monitoring station that all the resident's details are accurate and complete.
2. Make an emergency call to confirm communications are working.
3. Use Test mode to check the sensors are working and correctly located.



## Legal Notice

*Usage of this document, and all information (including product information) provided within, are subject to the following terms and conditions, and all applicable laws. If you do not agree with these terms, please do not access or use the remainder of this document.*

*This document contains highly confidential information, which is proprietary to Essence SmartCare Ltd. and/or its affiliates (hereafter, "Essence"). No part of this document's contents may be used, copied, disclosed or conveyed to any third party in any manner whatsoever without prior written permission from Essence.*

*The information included in this document is intended for your knowledge and for negotiation purposes only. Essence makes no implicit representations or warranties with respect to such information.*

*The information included in this document is subject to change without notice. Any decision to rely on the information contained herein shall be at your sole responsibility, and Essence will not accept any liability for your decision to use any information or for any damages resulting therefrom.*

*Certain laws do not allow limitations on implied warranties or the exclusion or limitation of certain damages. If these laws apply to you, some or all of the above disclaimers, exclusions, or limitations may not apply to you.*

*By using the information contained herein, you agree that the laws of the State of Israel, without regard to principles of conflict of laws, will govern any dispute of any sort that might arise between you and Essence regarding the information contained herein, and any such dispute shall be settled exclusively in the competent courts of Tel Aviv-Jaffa, Israel.*

*All registered or unregistered trademarks, product names, logos and other service marks mentioned within this document are the property of Essence, or their respective owners. Nothing contained herein shall be construed as conferring by implication, estoppels, or otherwise any license or right, either express or implied, under any patent or trademark of Essence or any third party. No use of any trademark may be made without the prior written authorization of Essence.*

*This document and all of its contents are protected intellectual property of Essence. Any copying, reprinting, reuse, reproduction, adaptation, distribution or translation without the prior written permission of Essence is prohibited.*

*Please check your End User License Agreement (EULA) for terms and conditions.*

*© 2017 All rights reserved to Essence SmartCare Ltd.*

For more information, please contact

Essence SmartCare Ltd.  
12 Abba Eban Avenue,  
Ackerstein Towers Bldg. D  
Herzliya Pituach, 4612001 Israel  
[www.essence-grp.com](http://www.essence-grp.com)  
Tel: +972-73-2447777  
Fax: +972-9-7729962