

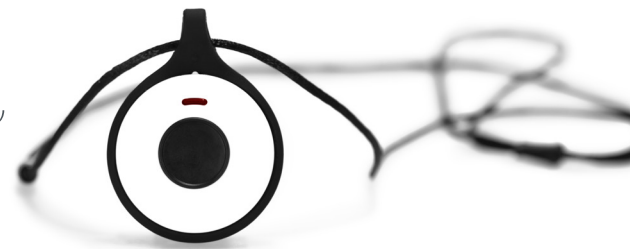
Care@Home™

Active

This is the future of mPERS
Complete protection inside and outside



Enabling an active lifestyle,
feeling safe anywhere



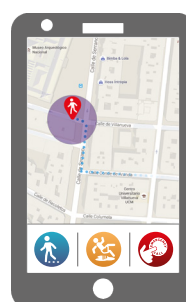
Care@Home™ Active allows you to seamlessly extend the protection your customers' have with their existing **Care@Home™** system, to outside of their homes.

Care@Home™ Active enables them to stay connected to you as their service provider and their family members even when they are beyond the home coverage area with these unique advantages:

- Emergency Call, Fall Detection and Activity Monitoring - while indoors and outdoors at home or on the go.
- Geo-Protection - if a resident has strayed outside of their usual walking perimeter, for those at risk of wandering or abduction.
- Geo Location - ability to locate the resident in case of emergency.
- Fall Detection - without the need for a separate mPERS dedicated device.
- Activity Monitoring - a step in a healthy direction.

Care@Home™ Active works in conjunction with any Care@Home™ senior care system to keep your customers active as they age by allowing them to continue living their lifestyle. This added service allows them to stay mobile by seamlessly ensuring their safety even as they move freely about their day to day business outside the home.

Care@Home™



PERS+

Advanced Emergency Response

Family

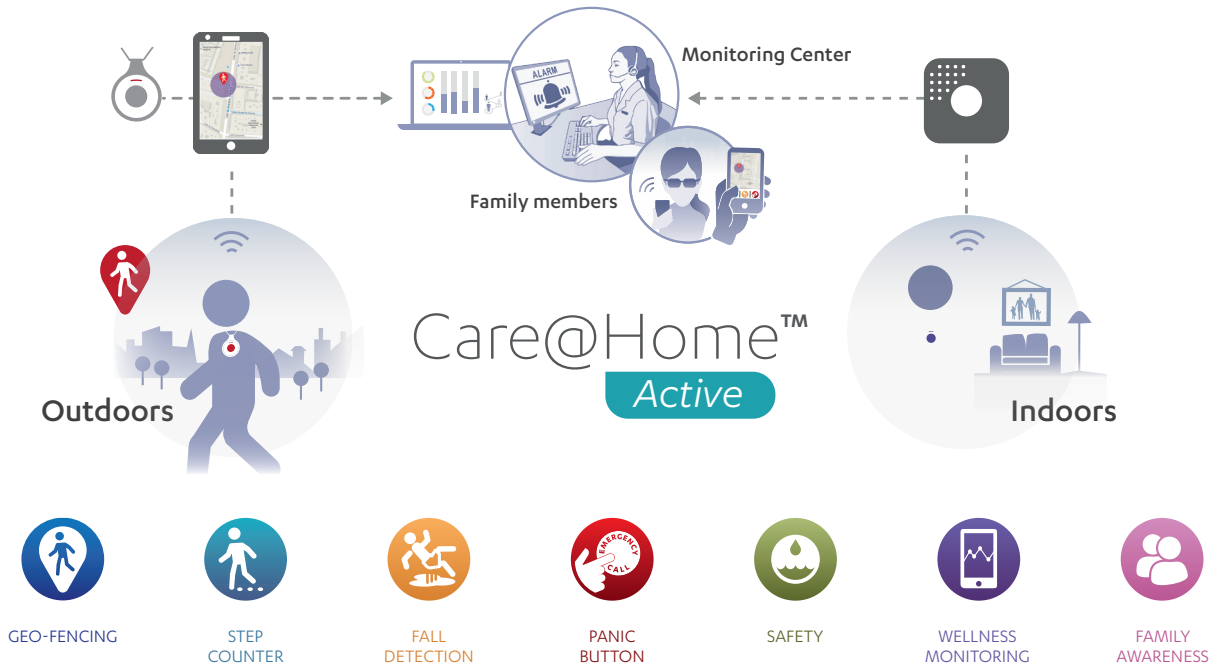
Independent customized Home Monitoring

Pro

Personalized Intelligent Home Care Solution

Expand your end-user reach by providing value to lower-age seniors who are more active and spend more time out of the house

With geo-location services, fall detection and panic button, **Care@Home™ Active** will send an emergency alert to the monitoring center when something is wrong and include the location of the user so that they can be easily located and get help quickly. The system can even remind the user or alert the family if the resident has left the house without their emergency pendant, ensuring that they never leave home without being protected.



Using existing devices - our **EP Active Panic Button Fall Detector**, connected to a **smart phone - Care@Home™ Active**, ensures that the customer is always monitored by sending alerts in emergency situations to healthcare providers and family members.

Care@Home™ Active brings a better and more cost effective solution to the problem of protecting people indoors and outdoors

- Uses device already owned by customer.
- Wearable does not need to be charged. It has a 2 year battery life.
- Customer is free to use their own mobile provider. No need for extra SIM/Data package.
- Wearable is small and light compared to bulky current options.

Essence by the numbers



Over 22 years of innovation



3 lines of business



1.5 million households

Better your business while you
better your customers' lives

Awarded for customer
experience and service
innovation:

