



www.openboxsoftware.com

info@openboxsoftware.com

US +1 917 677 1460

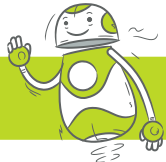
UK +44 203 139 9106

We deliver software and services to the Real Estate industry

Open Box is a global software development consultancy focused on the Real Estate industry. We provide an end-to-end solution for our clients. From ERP implementations to custom software development, Business Intelligence, system integration and Robotic Process Automation. Our Real Estate focus gives us an unparalleled advantage

to service the unique needs of the industry in an ever changing technology landscape. We've worked with some of the leading names in global Real Estate since 2001 and have been privileged to be involved in defining industry best practice, for not only the use of technology, but also business processes.

Automation Engine



The Open Box Real Estate Automation Engine leverages best-of-breed Robotic Process Automation (RPA) technology along with our wealth of knowledge and experience in understanding, mapping and improving Real Estate business processes. We combine these elements with our expertise in the development, support and integration of Real Estate software solutions:

- Real Estate experience
- Real Estate business processes
- Custom ERP plug-ins
- Highest quality automation software

Custom Software



Our team of technology experts understand how to develop, enhance, and support custom software applications built for the Real Estate industry. We can augment your existing IT team's capability by assisting with:

- Web Application Development
- Mobile Application Development
- Business Intelligence Software
- SharePoint Implementation and Customization
- Content Management Solutions
- System Integration
- Custom Application Support and Enhancements

Enterprise Solutions



From blue-printing through to implementation and support, we offer expert turnkey ERP services in relation to:

- MRI Software
- MRI Investment Mgmt
- ARGUS Enterprise
- ARGUS Developer
- Voyanta
- Nexus

Managed Services



Open Box provides a wide variety of tailored, managed services delivered by a team of individuals with extensive Real Estate knowledge and best practice.

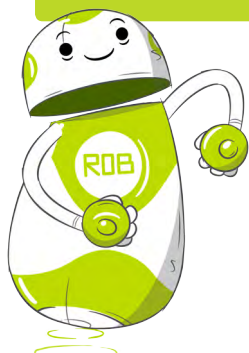
Management Consulting



Take your enterprise to the next level by leveraging our deep industry knowledge and technical expertise. We can assist with:

- Strategy & Technology Alignment
- Workshop & Delivery
- System Selection, Design & Implementation





Rethink the types of tasks we allocate to human beings

The Open Box Real Estate Automation Engine leverages best-of-breed Robotic Process Automation (RPA) technology along with our wealth of knowledge and experience in understanding, mapping and improving Real Estate business processes and combines these elements with our expertise in the development, support and integration of Real Estate software solutions.

What is Robotic Process Automation (RPA)?

- RPA is the application of technology that enables computer software to partially or fully automate human activities which are manual, repetitive and rule-based
- RPA gives a company the ability to map out a business process that is definable, repeatable and rule-based, then assigns a software robot to manage the execution

Benefits

- Processing costs can be reduced by 30—80%
- On average, RPA results in an increase of 40% in FTEs able to focus on customer centric activities
- On average, 40% handling/cycle time reduced
- Full Audit Trail – reduces compliance and business risk
- Human error is eliminated
- Knowledge loss due to staff attrition is mitigated
- ROI is achieved in quarters not years

Our Automation Engine is more than RPA

- In order to get value out of RPA you need to train a software robot to perform tasks as part of your specific processes / specific systems
- We have already done the large majority of this training to the point where our engine can already handle 60—80% of your Real Estate process

How is our Automation Engine different?

- RPA Robots interpret the user interface of third party applications and execute steps identically to a human user
- They are “trained” using demonstrative steps, rather than programmed using code-based instructions
- The intention of RPA is not to provide another coding platform for IT users, the intention is to provide an agile and configurable capability to non-technical business users in operational departments
- RPA is non-disruptive – where traditional IT deployments result in a transformation or change of existing systems which is complex and risky, RPA avoids the complexity and risk of such changes as end-user computer systems are accessed as a human would, with no need for underlying system programming
- RPA rolls out faster – no complex/large integration – can be rolled out in days and weeks not months and years
- Costs less, achieves ROI quicker and continues to drive down cost long after launching

Candidate Processes

- | | |
|----------------------------|---|
| • Invoice/document capture | • Entity/vendor set-up/ administration |
| • Data migration | • Public information gathering (web scraping) |
| • Reporting | • Valuation process automation |
| • System integration | |
| • Lease administration | |

