

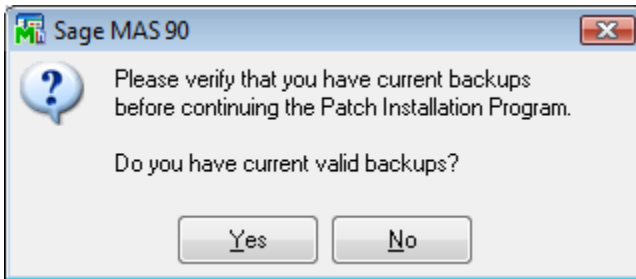
Un-Installing HighTower Enhancements

The Enhancement Patch Install feature un-installs modules by removing lines of code from your existing Sage MAS 90 or 200 modules, and from programs modified by other Master Developers (unless the Master Developer password protects the Sage Software owned Sage MAS 90 or 200 programs).

NOTE: This guide is solely for HighTower Enhancements from HighTower. If you have other 3rd party software or modifications please refer to the 3rd party master developer uninstall instructions.

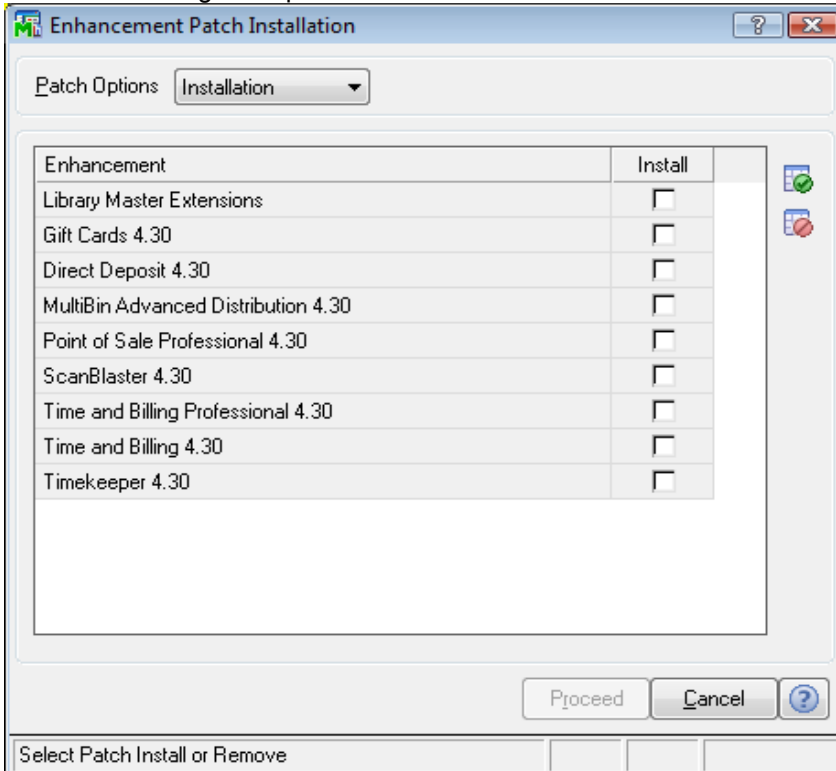
Complete the Enhancement Patch Installation

- 1 Make a backup of your Sage MAS 90 or 200 directory before un-installing applications.
- 2 From the Library Master Extensions **Utilities** menu, select **Enhancement Patch Install**. The following Sage MAS 90 or 200 dialog box appears.



Sage MAS 90 Dialog

- 3 Click **Yes** to begin the patch installation. The Enhancement Patch Installation window appears.

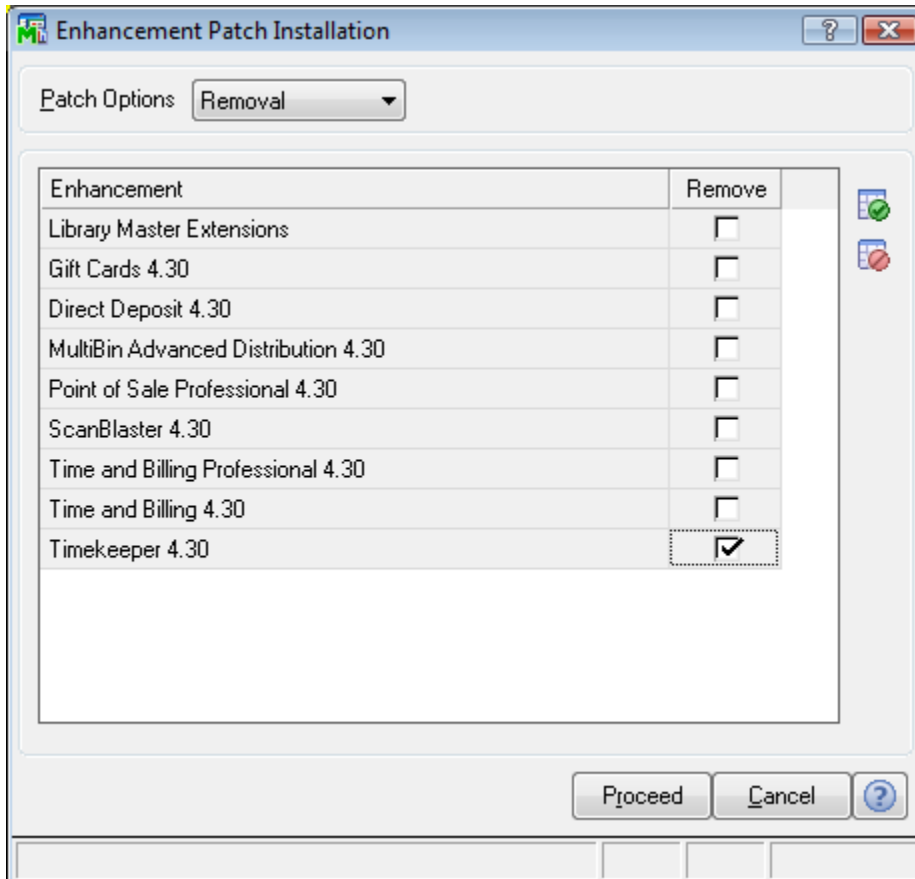


Enhancement Patch Installation Window

4 Select the Installation/Removal option from the **Patch options** field.

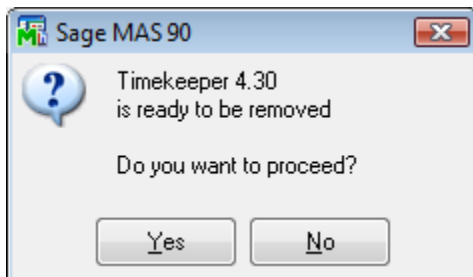
- Select **Removal** to remove any modules.

5 Select the appropriate HighTower module you need to remove from the **Enhancement** field and put the check mark in the corresponding check box.



Enhancement Patch Installation Window

6 Click **Proceed**. The following warning appears.



Sage MAS 90 Dialog

7 Click **Yes**. The system removes the enhancement.

Removing HighTower Enhancement Data

The HighTower Enhancement data will be removed by using the Sage help on Remove Data.

Complete the Remove HighTower Enhancement Data

1 Select Library Master **Main** menu > Company Maintenance. In the Company Maintenance window, click Remove.

Module	Data Level
Accounts Receivable	4.30
Bank Reconciliation	4.30
Common Information	4.30
Gift Card Expansion Pack	4.30
General Ledger	4.30
Inventory Management	4.30

Sage MAS90 Dialog Box

2 The following warning window appears.

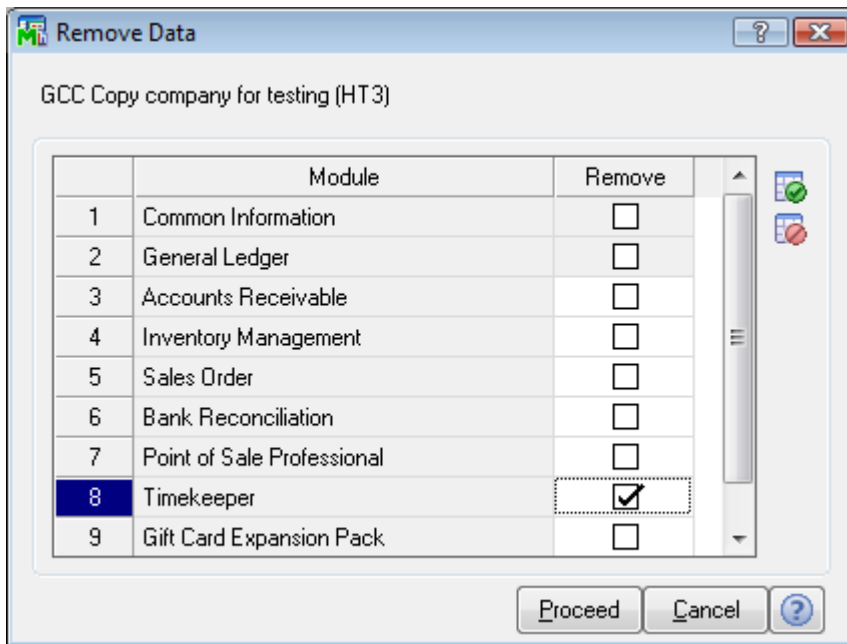
Warning: Removing individual modules that are integrated with other modules may cause unexpected results.
Integration with any removed module should be disabled.

Sage MAS90 Dialog Box

3 Click ok.

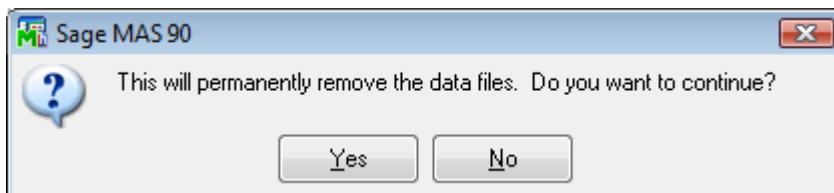
• Select **Removal** to remove any modules.

4 The Remove Data window appears.



Sage MAS90 Remove Data Window

5 Check the HighTower module and then click **Proceed**. The following warning appears.



Sage MAS 90 Dialog

6 Click **Yes**. The system removes the HighTower Enhancement

7 Close out of the Company Maintenance window.

Removing HighTower Enhancement from the Menu

The HighTower Enhancement will be removed by using the Sage help on Uninstall a Module.

Complete the Uninstall HighTower Enhancement

1. Use either of the following methods to open the System Configuration window:

- On the Administrator Tools screen, click System Configuration.
- Select Library Master Setup Menu > System Configuration.

2. In the System Configuration window, click **Uninstall**.

3. In the **Uninstall Modules** window, select the **module** to **uninstall** and click Delete.

The selected **module** is uninstalled.