

Library Master Extensions for Sage 100 ERP (formerly known as MAS 90 or 200)

Pulling It All Together

SWK Sage Software Master Developer for Sage 100 ERP software with titles such as Point of Sale Professional, Multi-Bin Advanced Distribution, ScanBlaster, Time and Billing, Time and Billing Professional, and Timekeeper to our credit. An integral part of each SWK version 4.x module is the Library Master Extensions module, designed to make software registration, workstation installation, and remote application installation easy for the end-user. It also includes spell check, which works in any Sage 100 ERP module.

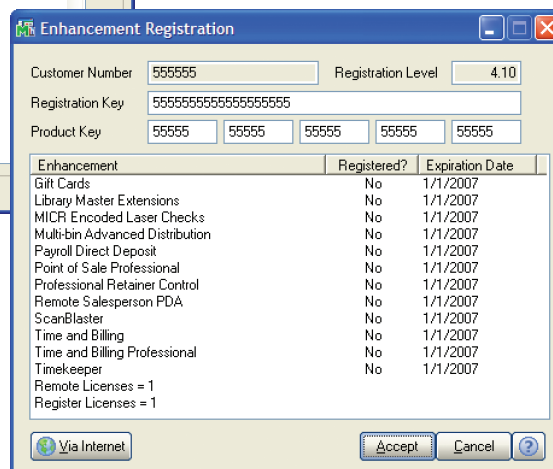
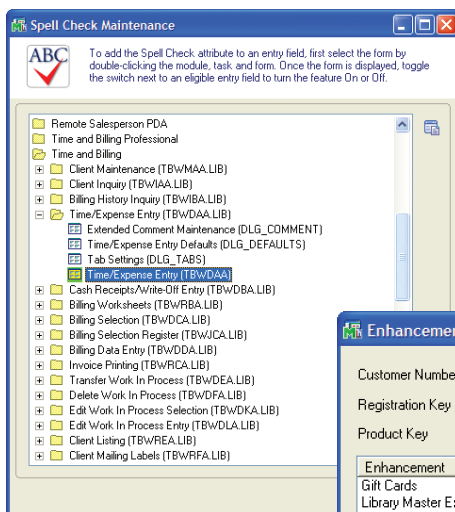
Thanks to the Library Master Extensions module, installation of all SWK version 4.x modules, including remote solutions, is easier than ever before.

The Library Master Extensions module enhances the registration of other SWK modules. Instead of entering a separate registration number for each SWK module, with the Library Master Extensions module you will only enter one registration number that registers all your HighTower modules. The Utilities available in the Library Master Extensions module contains our unique patch installation tool, which installs SWK modules by inserting lines of code into your existing Sage 100 ERP modules, and into programs modified by other Master Developers (unless the Master Developer password protects

the Sage-owned MAS 90 programs). If you ever want to uninstall a HighTower module, you can do so with the peace of mind that your original Sage MAS 90 or MAS 200 installation will work as if the HighTower module had never been installed.

"I" Before "E" Except After "C"

The Library Master Extensions includes our Spell Check utility FREE of charge! Spell Check offers a simple and efficient way to ensure that your data is free of spelling errors, eliminating confusion or mistakes that may occur as a result of misspelled words. This feature not only works with SWK modules, but can also be used with standard Sage MAS 90 and Sage MAS 200 modules. This feature is easy to configure and use, and will save you from the embarrassment of misspelled words on important business documents.



Development Partner

GOLD

Library Master Extensions is required for all SWK enhancements at v4.00 and above, including:

- Direct Deposit
- Gift Card Expansion Pack
- Laser Checks
- MASTransit
- Multi-Bin Advanced Distribution
- Point of Sale Professional
- Professional Retainer Control
- RemoteXerver
- ScanBlaster
- Time and Billing
- Time and Billing Professional
- Timekeeper

See reverse side for features and benefits

Library Master Extensions for Sage 100 ERP (formerly known as MAS 90 or 200)

Features and Benefits

SWK is proud to be one of the longest standing and most experienced Master Developers in the Sage channel. Our modules truly do enhance your Sage 100 ERP system, no matter what your business does. Check out what SWK's enhancements can do for you!

Peace of Mind Installation	<ul style="list-style-type: none">• The Enhancement Patch Installation feature installs all our modules by inserting – not rewriting – lines of code in the original MAS 100 ERP program.• The Client/Server Workstation Install feature available for Sage 100 ERP, installs only the core files required by an individual workstation to connect to a server running Sage 100 ERP, saving space on users' workstations.
Easy Registration	<ul style="list-style-type: none">• Enter one unlocking key to register all of your SWK enhancements, instead of entering an unlocking key for each product.
Spell Check for All MAS 90 and Sage MAS 200 Modules	<ul style="list-style-type: none">• The Spell Check feature is extremely easy to configure and easy to use. Simply press CTRL+F1 while entering data to check spelling• Prevent spelling errors in all Sage 100 ERP systems – FREE of charge!
Install and Configure Remote Devices	<ul style="list-style-type: none">• Simply create a remote user, remote device, and/or remote license to allow a user to access Sage 100 ERP data remotely. Eliminate confusing configuration processes.• Install ScanBlaster devices in minutes.
Utility Features You Can Really Use	<ul style="list-style-type: none">• Ensure users have the latest module updates with The Enhancement Diagnostic Inquiry feature, which displays module information including the installed version numbers.• Find fields that users want to add to graphical reports or to set up imports in half the time with the Data Definitions utility.• If you used ScanBlaster prior to version 4.00, use the other Migrate Level 3 Data feature to migrate users to version 4.00+ in just minutes!
Required for All HighTower Modules in Version 4.0 and above	<ul style="list-style-type: none">• Direct Deposit• Gift Card Expansion Pack• Laser Checks• MASTransit• Multi-Bin Advanced Distribution• Point of Sale Professional• Professional Retainer Control• RemoteXerver• ScanBlaster• Time and Billing• Time and Billing Professional• Timekeeper

Sage, the Sage logos, and the Sage product and service names mentioned herein are registered trademarks of Sage Software, Inc., or its affiliated entities. All other trademarks are property of their respective owners.

Library Master Extensions for Sage 100 ERP (formerly known as MAS 90 or 200)

Features and Benefits

SWK is proud to be one of the longest standing and most experienced Master Developers in the Sage channel. Our modules truly do enhance your Sage 100 ERP system, no matter what your business does. Check out what SWK's enhancements can do for you!

Peace of Mind Installation	<ul style="list-style-type: none">• The Enhancement Patch Installation feature installs all our modules by inserting – not rewriting – lines of code in the original MAS 100 ERP program.• The Client/Server Workstation Install feature available for Sage 100 ERP, installs only the core files required by an individual workstation to connect to a server running Sage 100 ERP, saving space on users' workstations.
Easy Registration	<ul style="list-style-type: none">• Enter one unlocking key to register all of your SWK enhancements, instead of entering an unlocking key for each product.
Spell Check for All MAS 90 and Sage MAS 200 Modules	<ul style="list-style-type: none">• The Spell Check feature is extremely easy to configure and easy to use. Simply press CTRL+F1 while entering data to check spelling• Prevent spelling errors in all Sage 100 ERP systems – FREE of charge!
Install and Configure Remote Devices	<ul style="list-style-type: none">• Simply create a remote user, remote device, and/or remote license to allow a user to access Sage 100 ERP data remotely. Eliminate confusing configuration processes.• Install ScanBlaster devices in minutes.
Utility Features You Can Really Use	<ul style="list-style-type: none">• Ensure users have the latest module updates with The Enhancement Diagnostic Inquiry feature, which displays module information including the installed version numbers.• Find fields that users want to add to graphical reports or to set up imports in half the time with the Data Definitions utility.• If you used ScanBlaster prior to version 4.00, use the other Migrate Level 3 Data feature to migrate users to version 4.00+ in just minutes!
Required for All HighTower Modules in Version 4.0 and above	<ul style="list-style-type: none">• Direct Deposit• Gift Card Expansion Pack• Laser Checks• MASTransit• Multi-Bin Advanced Distribution• Point of Sale Professional• Professional Retainer Control• RemoteXerver• ScanBlaster• Time and Billing• Time and Billing Professional• Timekeeper

Sage, the Sage logos, and the Sage product and service names mentioned herein are registered trademarks of Sage Software, Inc., or its affiliated entities. All other trademarks are property of their respective owners.