



## **WHEN MEASUREMENT ACCURACY IS CRITICAL**

Helping you deliver safe drinking water using reliable,  
best-in-class chlorine monitoring technology.

## > Making it easier for maintaining your best water quality

### The Kuntze Bare Sensor technology difference

- > No flexible membrane or electrolytic gel replacement
- > No reagents or consumables
- > No mechanical moving parts
- > Rapid sensor response
- > Best-in-class manual and ASR® patented automatic sensor cleaning
- > Stable and accurate measurement even in challenging water conditions
- > Low lifecycle cost



Dashboard technology for easy, real-time monitoring and early detection of problems.

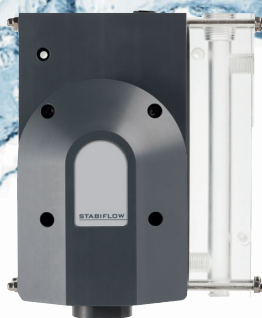
## > Advanced technologies that improve confidence and safety

- > Top quality sensor design with large, double gold band electrodes improve low level detection
- > Engineered solutions to fit the applications and water qualities
  - pH compensation
  - Temperature compensation
  - User defined alarms and control stops
- > Quick, efficient start-up and maintenance possible by sensor design. Provides stable zero point and rapid polarization.



### ASR® Cleaning

Patented, automatic sensor cleaning process reduces the need for recalibration, saving time.



### Argon StabiFlow®

Regulates water flow rate across all sensors. Pressure proof up to 87 psi.

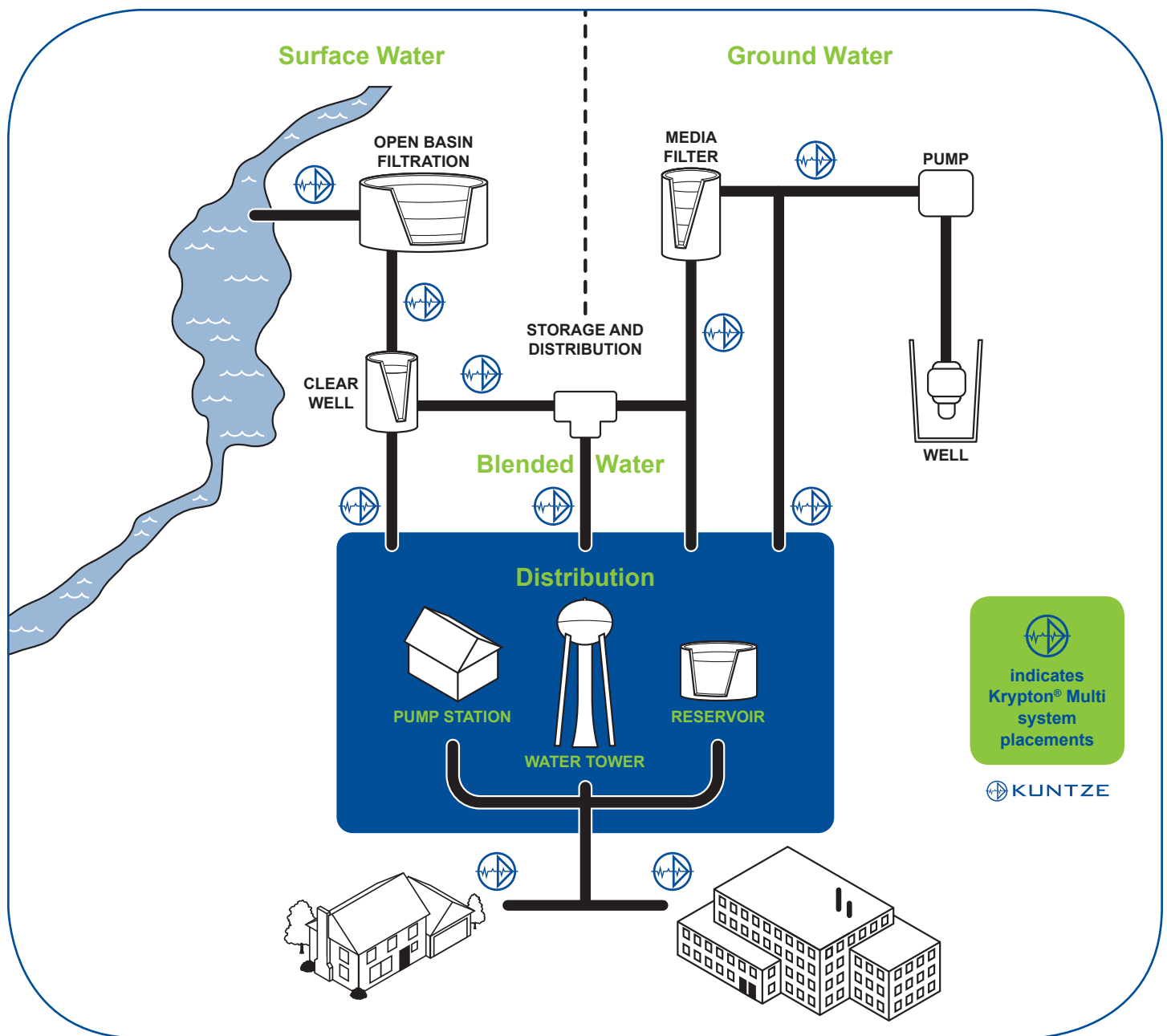


### NEON® MULTI

Monitoring unit for disinfectant, pH and water temperature. Features an intuitive menu with measurement and event information.

It's all about helping you deliver safe drinking water to your community while easily satisfying regulatory requirements. Kuntze offers a system solution with the accuracy of automatic chemical feeds and the reliability of 24/7 monitoring.

## > Kuntze monitoring system locations



### Your complete Krypton® Multi system

This fully assembled system reduces the possibility for error. All components are mounted on a backboard and ready to plug into a power source. The operator follows a few simple start-up steps and your system is measuring and reporting.





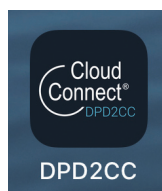
## > Time-saving management tools

- > You can control your water measurement process online from anywhere in the world 24/7 with Kuntze Cloud Connect®.
- > Phone App integrates manually taken DPD inputs and/or readings from other analyzer brands into CC system making monthly reporting easier.



## > Lower total cost of ownership

- > Less sensor maintenance requirements such as manual cleaning and recalibration
- > No reagents or consumables reduce operation expenses



## > Easy to get started

- > Complete the online Kuntze DIS form for direct application consulting.  
<https://info.kuntze.com/kuntze-disinfection-applications>
- > Onsite visit by a technical specialist



Kuntze Instruments is a supplier of process control instrumentation located in Pittsburgh, Pennsylvania. Our core business is focused on providing an accurate measuring and control option for the drinking water and wastewater treatment industry. We hold great pride in offering cost effective equipment that offers our end users a low maintenance system with highly reliable readings.

Kuntze Instruments is a direct affiliate of Kuntze Instruments GmbH, located in Meerbusch, Germany. Kuntze Instruments has been a leading manufacturer of analytical instrumentation for over half a century and continues to provide the industry with revolutionary technology that improves process simplicity and efficiency.

**Kuntze Instruments**  
Pittsburgh, PA 15068  
724-339-8510  
email: [support@kuntze.com](mailto:support@kuntze.com)



Scan/click QR code to  
submit Kuntze DIS form