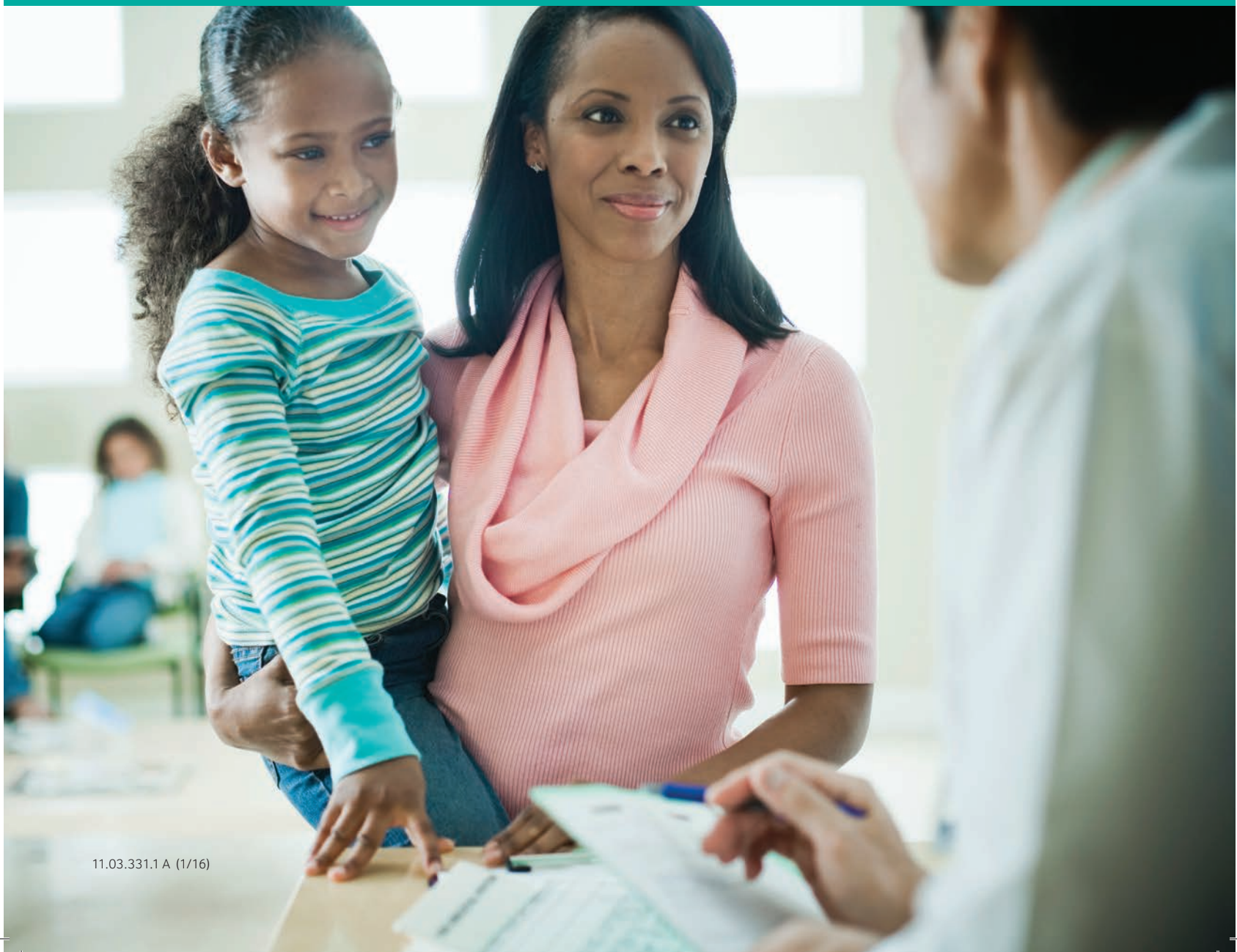


Quality health plans & benefits
Healthier living
Financial well-being
Intelligent solutions

aetna[®]

Need a member ID card?

www.aetna.com



Here's how to get one

It's easy to get an ID card through your member website. And you can get whichever works better for you — paper or electronic.

To print a paper ID card from your computer:

- Log in to your member website at www.aetna.com.
- Choose "Get an ID Card."
- Follow the steps to print your card.

To display an electronic ID card on your smartphone or tablet:

- Log in to the mobile member website by typing www.aetna.com in your browser.
- Choose "ID Card Information."
- Show your ID card when you visit the doctor or dentist.

Not signed up yet?

There's no time like the present. Visit www.aetna.com to sign up for your member website today.

Forgot whether you already signed up?

Maybe you can't remember if you've used your member website before. That's okay. You can recover a **user name** and reset a **password** at www.aetna.com.

Here's a tip: You need to have your user name before you can reset your password.

*If you've tried everything and still can't log in — that's okay, too. Tech support is at your service. Call toll-free at **1-800-225-3375**.*

Find what you need — wherever, whenever



The Aetna Mobile app puts our most popular online features at your fingertips. It's available for Android™ and iPhone® mobile devices.

Two ways to download your free Aetna Mobile app:

- Text Apps to 23862 to download now.*
- Scan the code with your mobile device.



To learn more, visit us at www.aetna.com/mobile.

*Standard text messaging rates may apply.

Aetna is the brand name used for products and services provided by one or more of the Aetna group of subsidiary companies, including Aetna Life Insurance Company and its affiliates (Aetna).

Apple, the Apple logo and iPhone are trademarks of Apple Inc., registered in the U.S. and other countries. App Store is a service mark of Apple Inc. Android and Google Play are trademarks of Google Inc.

This material is for information only and is not an offer or invitation to contract. An application must be completed to obtain coverage. Rates and benefits vary by location. The availability of the Aetna Navigator® member website's key features may vary by plan. Health benefits and health insurance plans contain exclusions and limitations. For more information about Aetna plans, refer to www.aetna.com.

www.aetna.com

©2016 Aetna Inc.
11.03.331.1 A (1/16)

aetna®