

MAY 2020

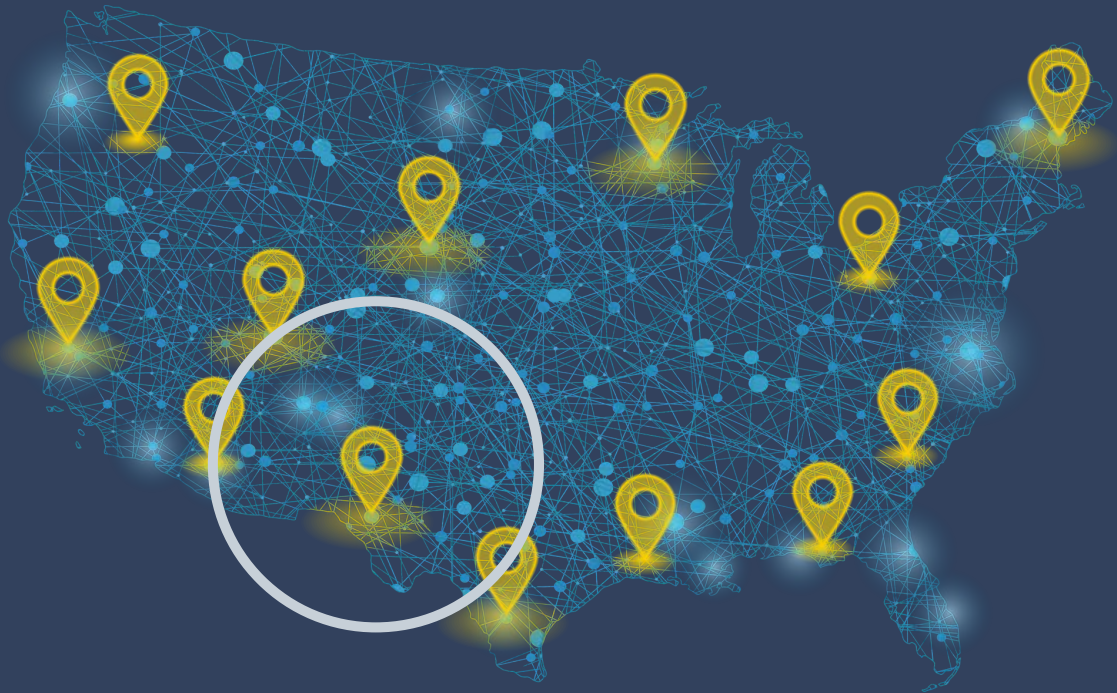
PIVVOT MAP BOOK

Southwest Region



PIVVOT SOUTHWEST MAP BOOK

This map book outlines the top data sources that energy companies in the Southwest need to have available for new construction or major repair and remediation projects.



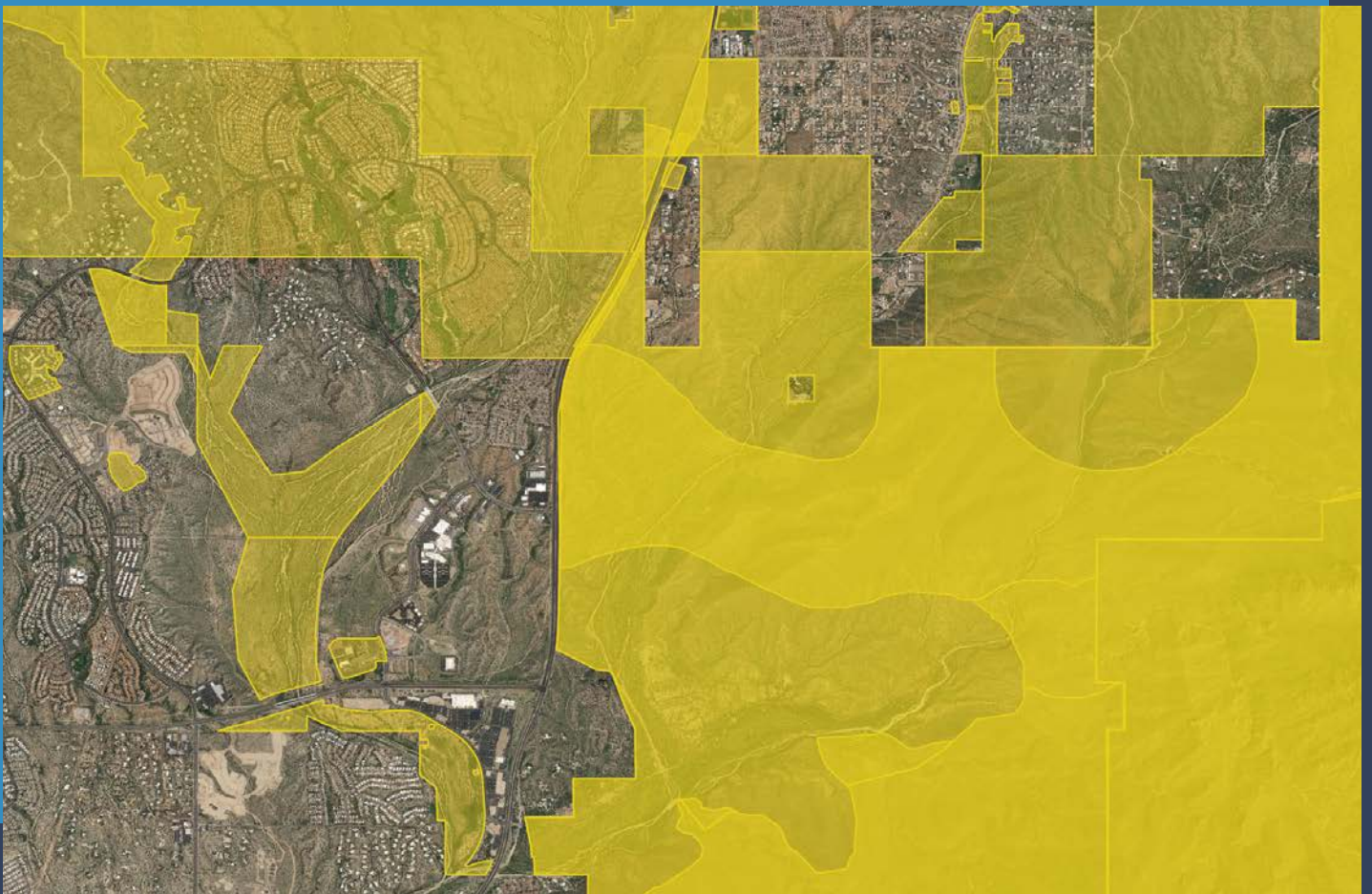
ABOUT PIVVOT

Comprehensive Data for Anywhere in the U.S.

Pivvot has curated a massive database of environmental, land, social and other location information – and we make it easy to access, interpret and share.

LAND OWNERSHIP

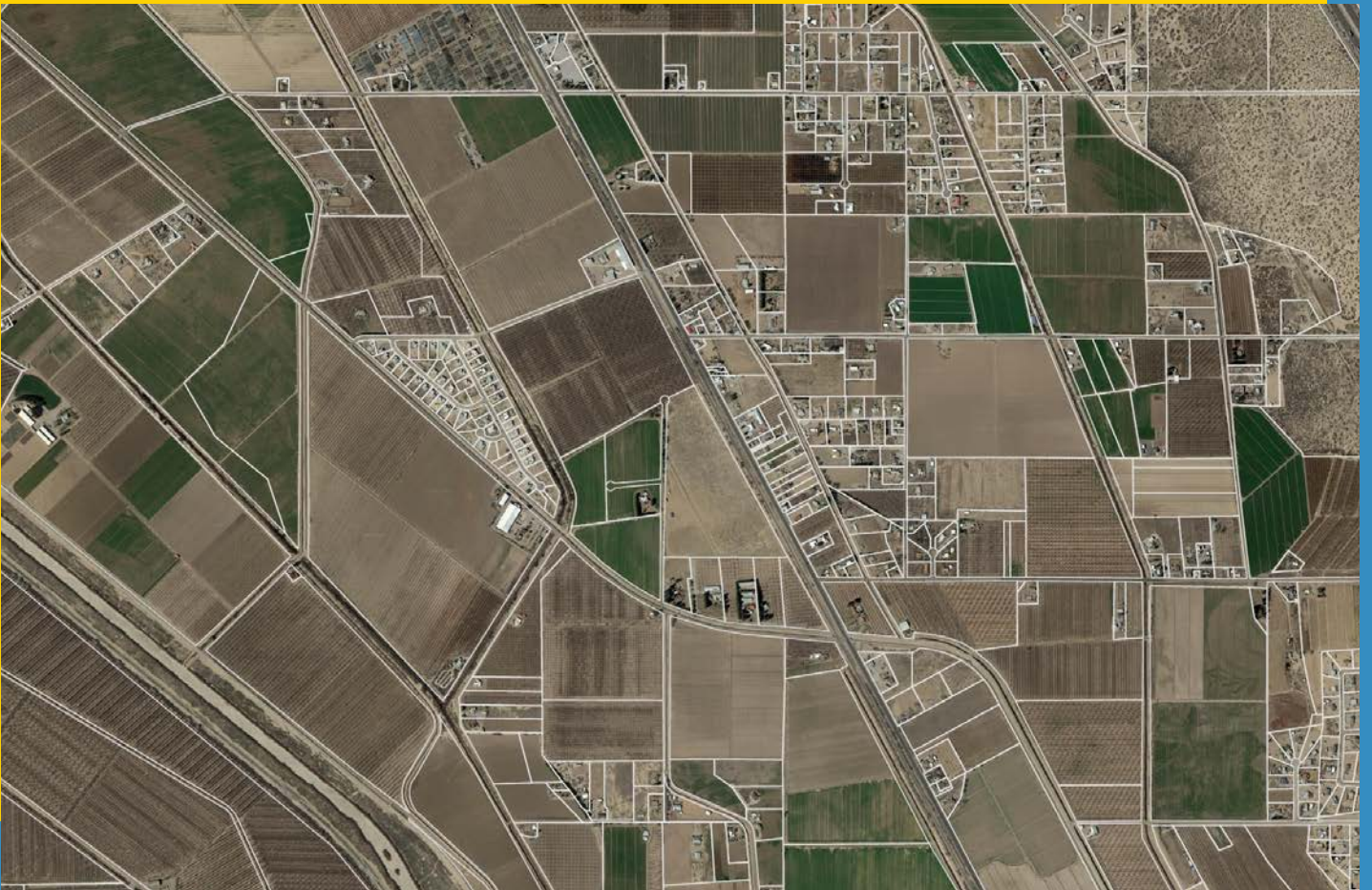
Land ownership conflicts can include tribal, federal, state, county, and known private land owners. In the South, it is important to understand Protected Area Database (PAD-US) information.



It is important to understand land or parcel boundaries that could add complexity to routing, permitting, or scheduling. Avoiding or excluding any lands that could be difficult to acquire could save the project time and money.

PROPERTY PARCELS

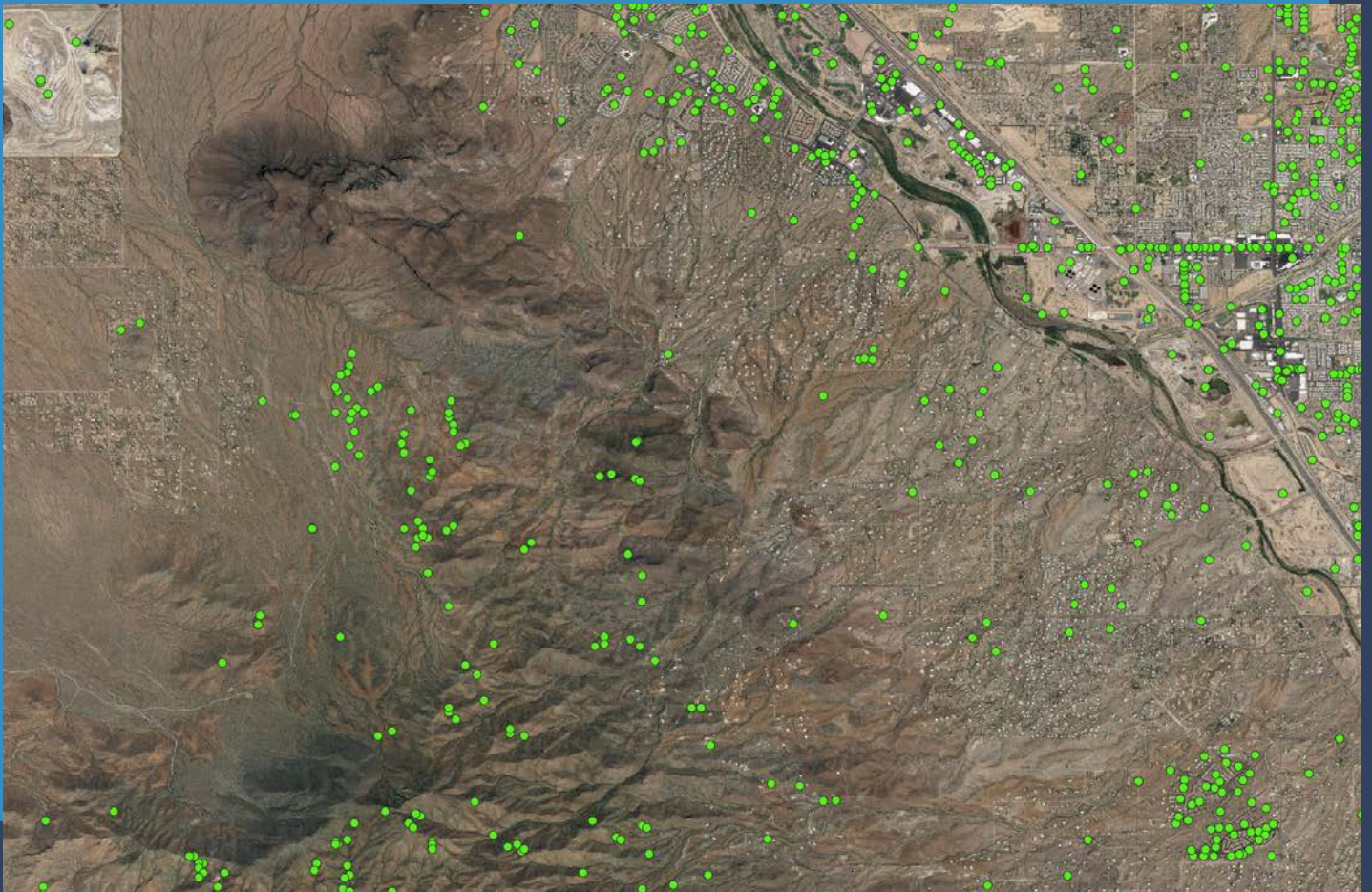
Parcel shapes, ownership, and assessed value are critical to understand permitting and land acquisition needs.



Avoiding or excluding any lands that could be difficult to acquire will save the project and money. With property parcel information, you can develop a line list, understand the properties your asset will cross, determine your easement, and be better prepared for land negotiation.

WATER WELLS & CONTAMINATED SITES

Pivvot manages 270+ infrastructure data including Water Wells and Contaminated Sites. It also includes Surface Water Quality Monitoring Stations, Cemeteries, Federal Registered Sites, etc.



Looking for water wells, contaminated sites, limited mobility infrastructure, cemeteries, etc. is difficult through aerial interpretation. With this data, eliminate reroutes and expedite the project schedule.

SOILS (SSURGO)

The SSURGO database contains information about soil as collected by the National Cooperative Soil Survey over the course of the past century.

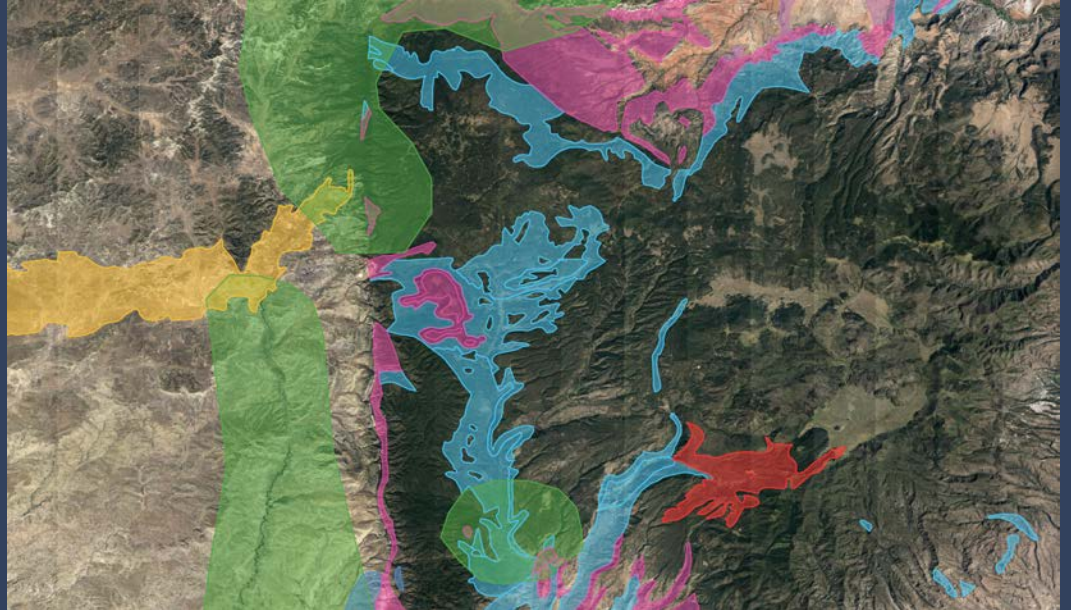


SOILS / BEDROCK

Soil and depth to bedrock form the geotechnical picture of an area.

AQUIFERS

The project can be delayed due to additional permitting requirements if the aquifer is deemed sensitive. Additional construction methods may be required to mitigate risk.



KARST TOPOGRAPHY

Identifying shallow fissures, caves and sinkholes ensures safety during construction, supports risk mitigation, and can prepare the project for higher cost and potentially longer construction schedules.

PIVVOT DATA

Pivvot also offers hundreds of additional data sources to support energy and infrastructure projects in the Southwest and across the United States.

HYDROLOGY

- Aquifers
- Flood Plain 100/500yr
- Flowline & Waterbodies (NHD)
- Levees
- Navigable Waterways
- Protected Waterbodies
- Wild & Scenic River
- Stream Gauges
- Wetlands (NWI)
- Watersheds

LAND MANAGEMENT

- Land Cover
- Land Ownership Conflict
- Public Land Survey System
- Property Parcels

INFRASTRUCTURE

- Building/Structure Outlines
- Existing Pipelines
- Powerlines
- Infrastructure
- Transportation – Road
- Transportation - Railroad

ECOLOGY

- Critical Habitat
- Species Habitat
- Ecologic Regions

JURISDICTIONS

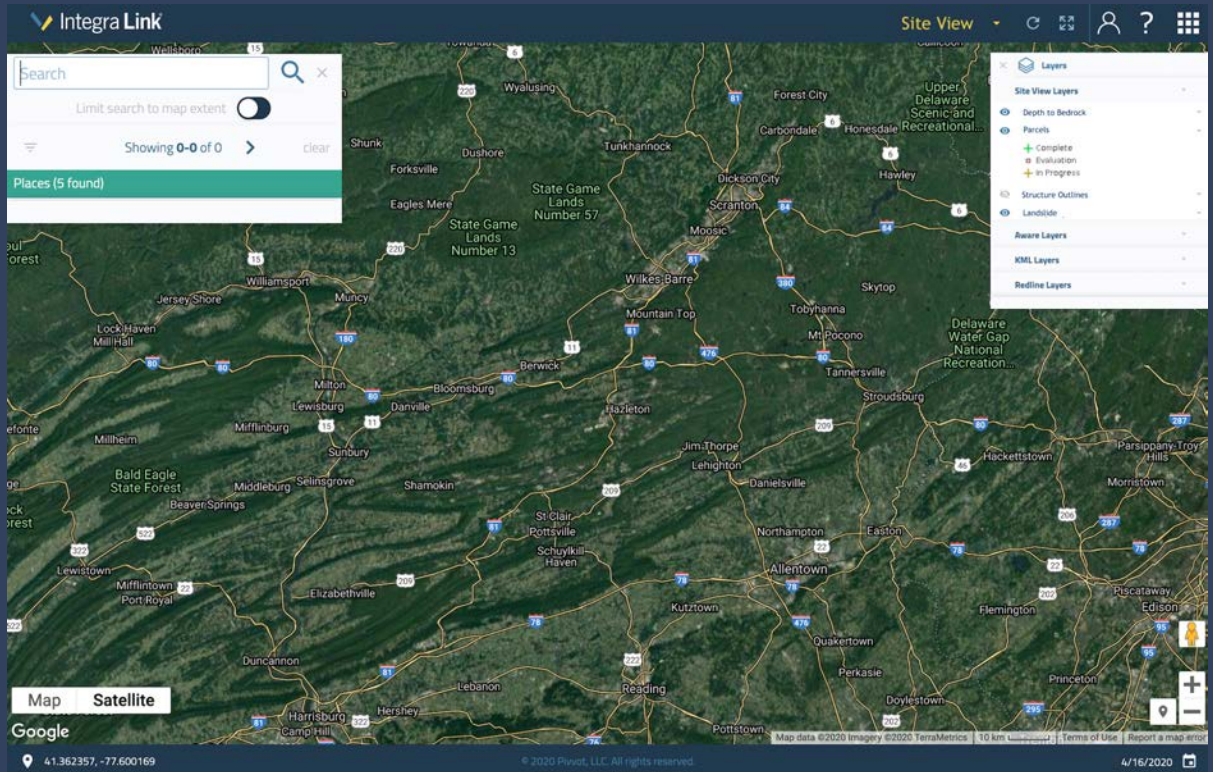
- Census Zip Tabulation Areas
- Congressional Districts
- County Boundary
- Energy Regulatory Regions
- Electric Retail Service Area
- Natural Gas Service Areas
- Oil & Gas Work Regions
- Populated Areas (PHMSA)
- Public Safety Answering Points
- State Legislative Districts
- School Districts
- Social Vulnerability
- State Legislative Districts
- US Army Corp Districts
- US Fish & Wildlife Regions

GEOLOGY & GEOTECHNICAL

- Depth to Bedrock
- Digital Elevation Model
- Fault Area
- Fault Lines
- Geological Units
- Karst Topography
- Landslide Risk
- Peak Ground Acceleration
- Slope (Percent)
- Soils (SSURGO)

PIVOT PLATFORM

The data in this book and hundreds of other sources are easily accessible to view, interpret and share through the Pivot platform.



Aware

Drop a location, draw a polygon or a route and gain a detailed understanding of your surroundings.

Collaborate

Collaborate with your teams, customers, and third-parties on a simple, fast and familiar map.

Route

Generate point-to-point preferred routes utilizing our data, platform and your criteria in record time.

PIVVOT SERVICES

Pivvot has gathered a team of data, technology, and industry experts to build and maintain our data and platform. Our solutions were purpose-built with deep technical knowledge of the industry problems we solve. Our team is available to provide data acquisition services, consultation and analysis.

Extended Support

- Onsite & Custom Training
- Implementation Data Services
- Custom Workflows & Documentation

Data Services

- Acquisition of Custom Datasets
- Data Processing & Preparation
- Quality & Accuracy Checks
- Custom Data Approaches

Industry Expertise

- Routing Analysis
- GIS Analysis
- Subject Matter Expertise Consulting