

## Designed for business properties.

This Wi-Fi enabled smart lock is built for businesses large and small. Manage access from a smart phone or computer and deliver temporary access codes for guests and employees.



## Key Features



Designed for easy installation, connection and use.



Embedded Wi-Fi for standard, 2.4 GHz Wi-Fi connectivity. No additional controller or hub required.



Monitor & control from anywhere using web browser or mobile app.



Capacity for up to 40 weekly access schedules (M-F, 9-5, etc.).



Works with RemoteLock ACS wired solutions.



Receive access event notifications via text or email.



Utilize temporary codes for guests or visitor management.



The lock saves all programming and data even in the event of power outage or router offline.



Optional lockout functionality after 5 incorrect code attempts.



Optional auto-locking with Passage Mode.



Secure bi-directional encryption.

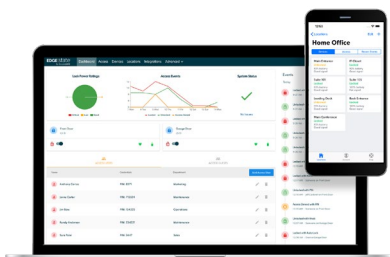


## What's In the box?

- ✓ Interior and Exterior Lock
- ✓ 2 Lever Handles
- ✓ Spring Latch and Strike Plate
- ✓ 2 Physical Override Keys
- ✓ Spindle
- ✓ Mounting Hardware

## Product Specifications

Exterior Dimensions	6¾ (H) x 2½ (W) x 2¾ (D) inches
Interior Dimensions	6¾ (H) x 2½ (W) x 2¾ (D) inches
Backset	2¾ inches (60mm) or 2¾ inches (70mm)
Locking Device	Tubular latch included (60mm or 70mm) (Mortise latch available)
Construction	Zinc alloy with PVD (Physical Vapor Deposition) finish
Operating Temperature	-31°F (-35°C) to 151°F (66°C)
Door Thickness	1¾ - 2¾ inches (35mm - 60mm)
Door Handing	Non-handed, field reversible
Batteries	4 AA (Not included)
Keyway	5-pin Schlage C
Code Length	4 – 10 digits
Code Capacity	Up to 3,500
Communication	Single band 2.4GHz Wi-Fi (IEEE 802.11b/g/n) with WPA/WPA2



### Access control that scales with your business.

RemoteLock's hardware is powered by EdgeState web and mobile software, providing easy-to-use, flexible access management that scales with your businesses needs.