

RemoteLOCK
openEDGE RG
LEVER HANDLE



Designed for residential properties.

This Wi-Fi enabled smart lock is perfect for apartments, vacation rentals, and offices. Manage access from a smart phone or computer and deliver access codes for guests and renters.

Key Features



Designed for easy installation, connection and use.



Utilize temporary codes for guests or visitor management.



Embedded Wi-Fi for standard, 2.4 GHz Wi-Fi connectivity. No additional controller or hub required.



The lock saves all programming and data even in the event of power outage or router offline.



Monitor & control from anywhere using web browser or mobile app.



Optional lockout functionality after 5 incorrect code attempts.



Capacity for up to 40 weekly access schedules (M-F, 9-5, etc.).



Optional auto-locking with Passage Mode.



Works with RemoteLock ACS wired solutions.



Secure bi-directional encryption.



Receive access event notifications via text or email.

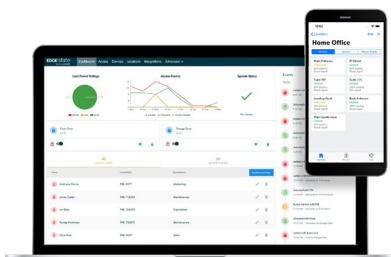


What's In the box?

- ✓ Interior and Exterior Lock
- ✓ 2 Lever Handles
- ✓ Spring Latch and Strike Plate
- ✓ 2 Physical Override Keys
- ✓ Mounting Plate
- ✓ Mounting Hardware

Product Specifications

Exterior Dimensions	5½ (H) x 3½ (W) x 2½ (D) inches
Interior Dimensions	7½ (H) x 2⅞ (W) x 3⅞ (D) inches
Backset	2⅜ inch (60mm) or 2¾ inch (70mm)
Locking Device	Adjustable tubular latch (60mm or 70mm)
Construction	Zinc alloy, suitable for indoor & outdoor use
Finish Options	Satin nickel or rubbed bronze
Operating Temperature	-31°F (-35°C) to 151°F (66°C)
Door Thickness	1⅝ - 2in. (35mm - 50mm)
Door Handing	Non-handed, field reversible
Batteries	4 AA (Not included)
Keyway	KW1 5-pin keyway
Code Length	4 – 10 digits
Code Capacity	Up to 3,500
Communication	Single band 2.4GHz Wi-Fi (IEEE 802.11b/g/n) with WPA/WPA2



Access control that scales with your business.

RemoteLock's hardware is powered by EdgeState web and mobile software, providing easy-to-use, flexible access management that scales with your businesses needs.