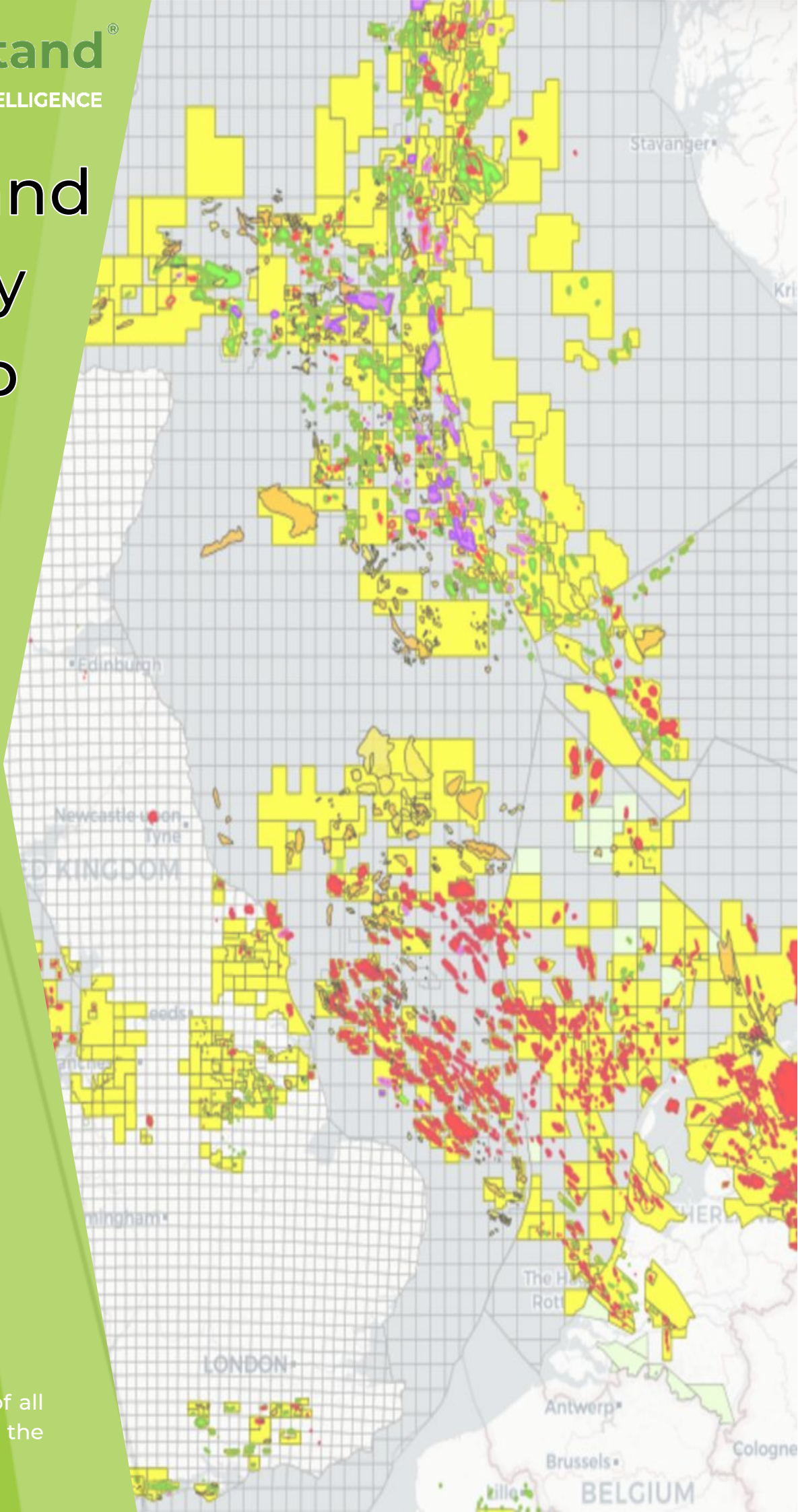




MapStand[®]
LOCATION INTELLIGENCE

MapStand Monthly Mashup



MARCH 2020

A monthly round up of all that has happened in the MapStand world...

Table of Contents

[Welcome to the first edition of the MapStand Monthly Mashup](#)

[Digital Transformation - Do you have the basics?](#)

[Africa is firmly back off the map](#)

[Block 48, Angola. Total - April](#)

[Venus-1, Namibia. Total - Mid 2020](#)

[Luiperd-1, South Africa. Total - H2 2020](#)

[NW Europe - A focus on Infrastructure Led Exploration \(ILX\)](#)

[Success Stories](#)

[Development Start-up and delays](#)

[Other interesting activity](#)

[Hot prospects to watch?](#)

[Exploration wells currently drilling in NW Europe](#)

[South America Round Up](#)

[Brazil](#)

[Colombia](#)

[Peru](#)

[Argentina](#)

[Falklands](#)

[A Caribbean to Asia Pacific Round Up](#)

[Trinidad & Tobago](#)

[Bahamas](#)

[Australia](#)

[Key Activities in Eastern Europe and The Middle East](#)

[United Arab Emirates](#)

[Iraq](#)

[Lebanon's Well to Watch](#)

[Romania licence extension.](#)

[The Angolan incident](#)

[What could you do with MapStand? Here are a few examples:](#)

[Support](#)

[Development News](#)

[Helpful Hints and Tips](#)

[Questions & Answers](#)

[Getting Help](#)

[Join the Community](#)

Welcome to the first edition of the *MapStand Monthly Mashup*

Each month we aim to bring you a cross-section of key industry news from across the globe combined with some blog pieces on topics ranging from E&P to cloud technologies. Alongside this, we will also help guide you on how to get the most from the MapStand platform with some useful hints and tips along the way.

Despite a whirlwind month for the industry in which Covid-19 and the subsequent oil-price crash has left every company reeling, we focus on some of the main E&P news in March. In North-West Europe, several drilling campaigns reached their conclusion with infrastructure-led and near-field exploration paying dividends. Further afield, we saw the start of a country opening well in Lebanon and while companies have been slashing CAPEX in recent weeks, there also remains some exciting prospects to be drilled in 2020, albeit with some delays expected.

We also take a look at how the industry may have missed the basics when it comes to digital transformation and how MapStand can help before concluding with some interesting applications of the MapStand data when combined with other open data layers.

Here at MapStand, our analysts have continued in getting the latest news and data to you. This month saw a host of data added globally, including to our new infrastructure layers. We also received lots of valuable feedback and data from our community, including proprietary and multi-client [2D and 3D Surveys locations](#) from [ANPM Timor-Leste](#). This includes over 50 2D surveys and 15 3D surveys providing extensive coverage over the offshore region.

As is the MapStand ethos, it would be great to hear feedback from our community on this newsletter. If there are certain topics you would like to read about or you have data/prospects you would like to promote either on our platform or through this newsletter we would love to hear from you.

[Francis Cram](#)
CEO - MapStand

Digital Transformation - Do you have the basics?

With the large parts of the oil and gas industry now working remotely, the basics of many companies' recent digital transformation strategies will be put to the test. For all of the big data, artificial intelligence and machine learning applications, the ability for all employees to access the latest data and software, continue their normal day to day work and provide services to clients all without having access to the usual office IT infrastructure will be key to maintaining near-term revenues.

Some will see very little change to a typical day in the office with daily meetings now taking place on video conferencing tools such as Zoom/Skype, cloud-hosted data and software easily accessed and work shared with colleagues and delivered to clients all through an internet connection.

On the flip-side, others may be struggling to access legacy data stored on a USB on a colleagues desk or on servers at the back of office whilst connecting to the software packages, licensed to desktop computers and accessed through a remote connection, means you can have a cup of tea while watching the familiar loading screens.

If companies had not already implemented digital transformation strategies to date, the current events will indicate a need for rapid adoption in order to survive and move forward with terms such as cloud-hosted, API (application programming interface), SaaS (Software as a Service) and DaaS (Data as a Service) all becoming part of the vocabulary of the modern E&P professional.

Whilst we interact with cloud-hosted technologies daily, from online banking to streaming our favourite movies, the oil and gas industry has been slower to adopt this technology. [Accenture's 2020 Upstream Oil and Gas Digital Trends](#) survey highlights that oil and gas companies are continuing to invest in digital and now, more than ever, will benefit from the cost savings that can be achieved yet there are still hurdles to overcome with security and in-house capability to implement some of the key issues - *"nearly 60% stated they would look to external providers for assistance"*

Here at MapStand, we are a fully 'cloud-hosted' business, remote working has always been part of our culture and the way we deliver our products and services to clients. Whether its support calls being answered on the train to work or a new discovery being added from the living room, digital technology has allowed us to be flexible and adaptable whilst still delivering value.

MapStand offers a free web-hosted platform that allows anyone to view geotagged E&P news and data through a laptop, mobile or tablet. With our commercial DaaS

(data as a service) offering through our Enterprise and Hub subscriptions, individuals and companies get increased value as they can access our E&P data through APIs, stream layers directly into their own GIS environment and combine it with their own data to undertake further analysis at a significantly reduced cost to traditional vendors.

The benefits of our cloud-hosted offering can be very impactful to businesses. When software upgrades are made, how do you make sure users have downloaded the latest version and latest security updates. When it comes to data, how do you ensure users across the world have access to and are viewing the same information and not a legacy copy from 6 months ago?

Our [cloud-hosted web application](#) is continually updated by our team of developers and improvements are rolled out seamlessly without any downtime or requirements on the end user to upgrade. Through our APIs, our data team continually updates content and with automated twice daily data ingestion, clients will always have the latest data at their fingertips, anywhere in the world, without lifting a finger.

At the end of this pandemic, companies are likely to come out the other side with a very different view on how technology has been adopted to date and how much it can improve their business in future. With oil prices near record lows, E&P companies will be required, more than most, to embrace digital technology in order to cut costs and become more efficient across the E&P lifecycle. Some will flourish whilst some will be left behind as we see greater adoption of low cost, value add, digital technology.

Want to find out more on our free and commercial offerings – Visit <https://mapstand.com> or sign up to our platform at <https://app.mapstand.com>

[Marcus Wiltshire](#)

Spatial Data Analyst - MapStand

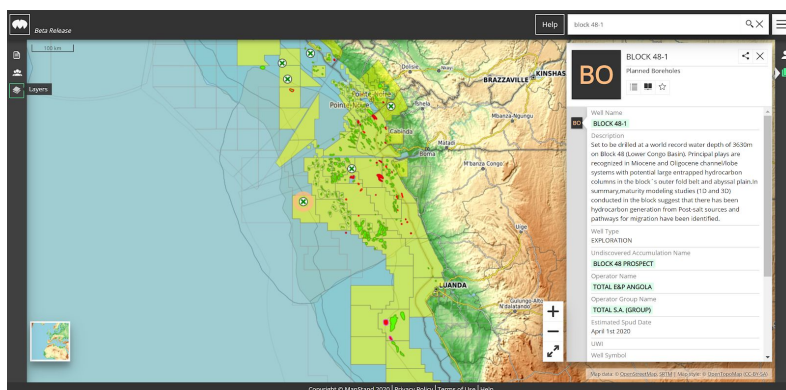
Africa is firmly back off the map

Or is it? Here are three exciting explorations wells that *might* still go ahead this year:

Block 48, Angola. Total - April

[Total](#) (50%) and its partner [Sonangol](#) (50%) are set to spud a potential play opening well within [Block 48](#) in the ultra deepwater sections of the Lower Congo Basin, south of the Congo River. Total will use the [Maersk Voyager](#) drillship, which has been contracted for \$195k/d.

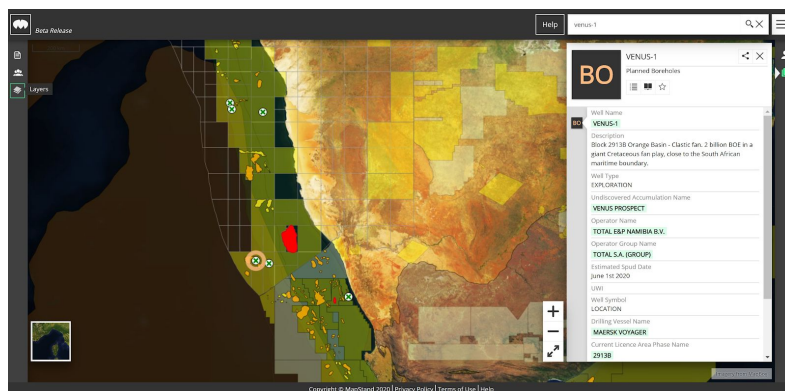
At 3,628m water depth, this well is set to be the deepest ever drilled and on the verge of what is technologically possible with modern day equipment. The most capable 7th generation drillships are rated to a maximum water depth of ~3,660m.



Venus-1, Namibia. Total - Mid 2020

Located in the Orange basin, [Venus-1](#) could not only transform the potential oil industry in Namibia, but open up a new play in neighbouring South Africa too. For nearly 50 years, Namibia's oil has remained in a state of perpetual elusiveness. Aside from the [Kudu](#) gas discovery in the 1970's (not yet developed), successive exploration has consistently missed the mark.

[Total](#) (70%), [Impact Oil and Gas](#) (20%) and state oil company [Namcor](#) (10%) are hoping this time will be different. Targeting 1.5bn bbls of mean prospective resource, this could be the defining well of 2020. [Venus-1](#) is set to spud after the [Maersk Voyager](#) has completed operations in Angola.

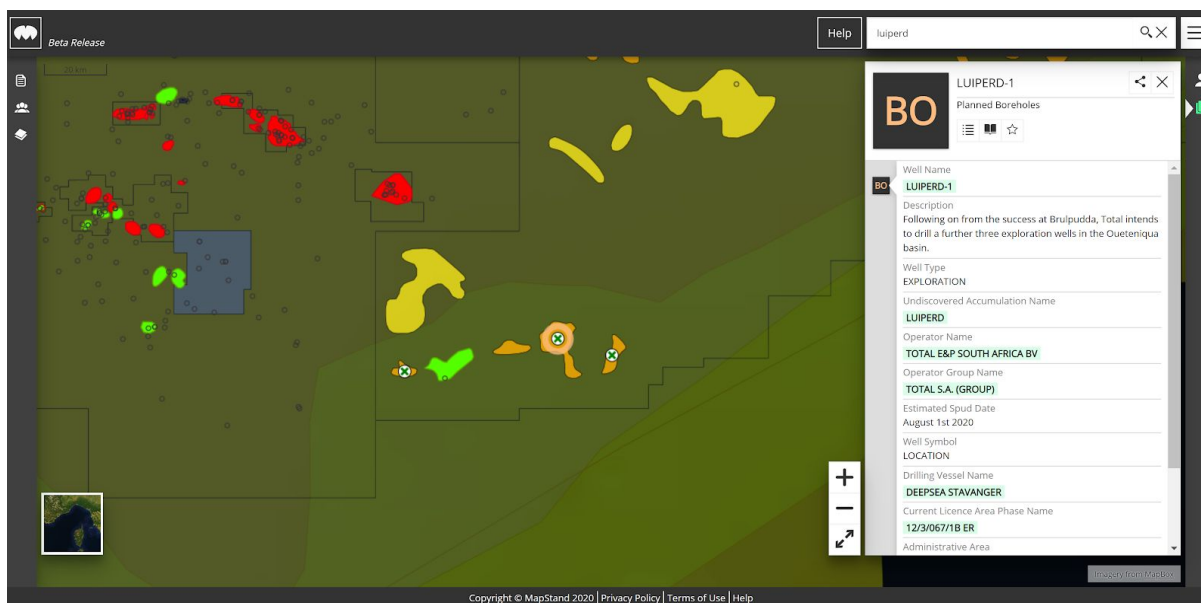


Luiperd-1, South Africa. Total - H2 2020

The follow up well to [Total's](#) significant 2019 gas condensate discovery, [Brulpadda](#). A full five degrees away from the roaring forties, ocean conditions in the area mean that drilling here requires a big, rugged, harsh environment semi-submersible designed for Norwegian waters. Queue the [Deepsea Stavanger](#), which will be shipped 15,000 km down from Norway to South Africa.

2019 wasn't [Stavanger's](#) first rodeo down South. [Total's](#) first attempt to drill the prospect in 2014 was cut short due to difficulties experienced with the strong Agulhas current. For the second attempt, an anchor-handler tug had to be used to help keep the rig in position.

[Luiperd-1](#) is targeting ~500 MMboe of mean prospective resource and is set to cost partners [Total](#) (45%), [Qatar Petroleum](#) (25%) and [CNRL](#) (20%) ~\$150 MM.



Alexander Burnett

Senior Analyst - MapStand

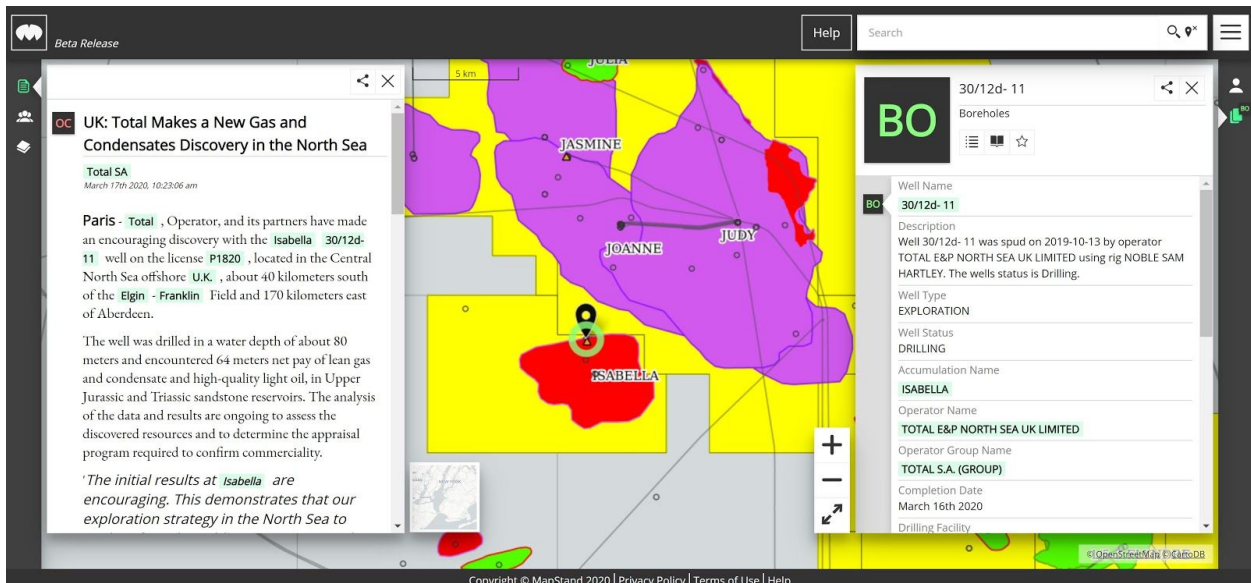
NW Europe - A focus on Infrastructure Led Exploration (ILX)

Budgets for exploration have been cut this month following the oil price crash and the global Covid-19 pandemic. Despite the huge challenges to come, recent innovative exploration strategies from a variety of North Sea companies, using an infrastructure led exploration approach, has generated a lot of positives out of an industry in crisis. Several operators and partners have shared their success this month, below are my highlights.

Success Stories

Isabella

[Isabella](#) is a very encouraging discovery in the Central North Sea after news of the recent oil price and Covid-19 news. [Total](#) the operator with 30% working interest of the [P1820](#) license alongside [Neptune Energy](#) (50%), [Ithaca Energy](#) (10%) and the wholly-owned subsidiary of [EDISON E&P UK LTD](#), [EUROIL EXPLORATION LIMITED](#) (10%) have announced the discovery in the [30/12d-11](#) well on the license [P1820](#). [30/12d-11](#) was drilled in 80m water depth and encountered 64m net pay of lean gas and condensate and high-quality light oil, in Upper Jurassic and Triassic sandstone reservoirs. With Isabella conveniently located nearby existing infrastructure, it has set the tone for what has proved a successful exploration strategy using infrastructure-led exploration (ILX) by [Total](#) and partners in the Central North Sea.



The screenshot displays the MapStand software interface. On the left, a news article titled "UK: Total Makes a New Gas and Condensates Discovery in the North Sea" is visible, dated March 17th, 2020. The article mentions the discovery of the Isabella well (30/12d-11) on the P1820 license, located in the Central North Sea offshore U.K., about 40 kilometers south of the Elgin-Franklin Field and 170 kilometers east of Aberdeen. The well was drilled in a water depth of about 80 meters and encountered 64 meters net pay of lean gas and condensate and high-quality light oil, in Upper Jurassic and Triassic sandstone reservoirs. The analysis of the data and results are ongoing to assess the discovered resources and to determine the appraisal program required to confirm commerciality. The article concludes with: "The initial results at Isabella are encouraging. This demonstrates that our exploration strategy in the North Sea to".

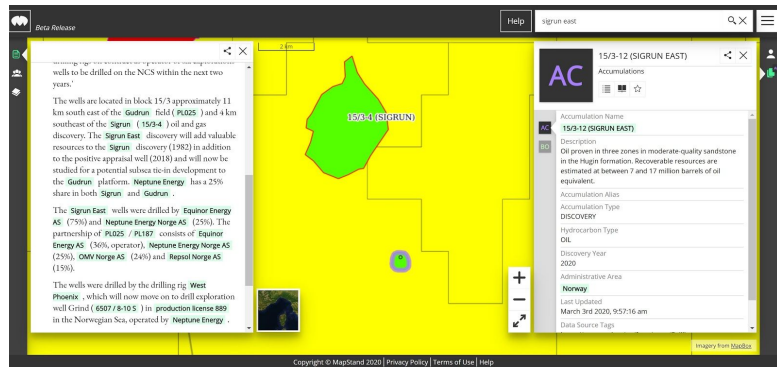
The central part of the interface shows a map of the North Sea with several well locations marked: JASMINE, JOANNE, JUDY, and ISABELLA. The ISABELLA well is highlighted with a red circle. The map also shows license boundaries in yellow and purple.

On the right, a detailed information panel for well 30/12d-11 is displayed. The well name is 30/12d-11, and it is classified as a Borehole. The description states: "Well 30/12d-11 was spud on 2019-10-13 by operator TOTAL E&P NORTH SEA UK LIMITED using rig NOBLE SAM HARTLEY. The wells status is Drilling." The well type is EXPLORATION, and the well status is DRILLING. The accumulation name is ISABELLA, the operator name is TOTAL E&P NORTH SEA UK LIMITED, and the operator group name is TOTAL S.A. (GROUP). The completion date is March 16th 2020, and the drilling facility is listed.

At the bottom of the interface, there is a copyright notice: "Copyright © MapStand 2020 | Privacy Policy | Terms of Use | Help".

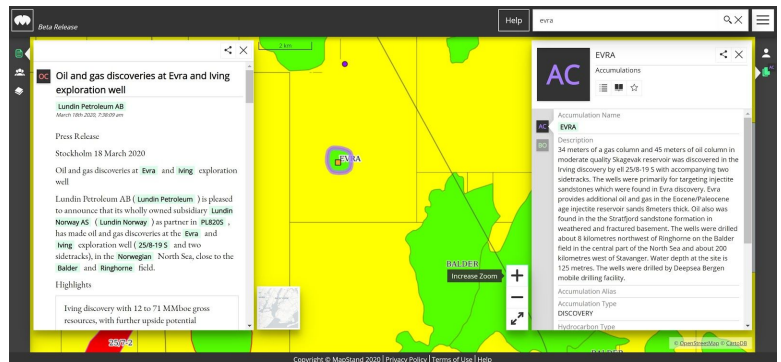
Sigrun East

Oil discovery found at [Sigrun East](#) which lies in licence [PL025](#). The licence is operated by [Equinor Energy AS](#) (36%) with partners being [Neptune Energy Norge AS](#) (25%), [Repsol Norge AS](#) (15%), [OMV Norge AS](#) (24%).



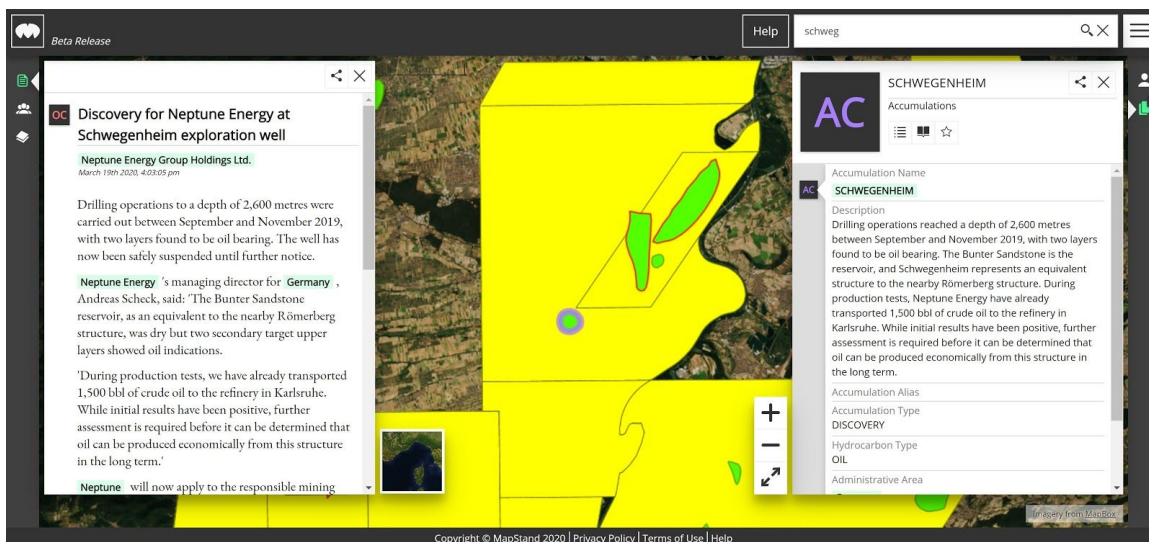
Evra and Irving

[MOL Norge AS](#) the operator with 40% working interest in [PL820 S](#) alongside [Lundin Petroleum](#) (40%), [Wintershall Dea Norge](#) (10%) [Pandion Energy AS](#) (10%) made oil and gas discoveries at [Evra](#) and [Irving](#) after concluding the drilling of wildcat well [25/8-19 S](#) and appraisal well [25/8-19](#) in [PL820 S](#).



Schwegenheim

[Neptune Energy](#) involved in plenty of exploration success this month with another discovery! They keep on coming this week in NW Europe... This time with [Neptune Energy](#) finding success in the Rhine Valley after detailed analysis following the drilling of the [Schwegenheim exploration well](#) in Germany.



Development Start-up and delays

Skogul Field

[Aker BP ASA](#) has announced that the [Skogul](#) field located in [PL460](#) is now onstream in the North Sea. This is on time after consent was provided for a March 2020 start-up date from [The Norwegian Petroleum Directorate](#). Recoverable resources are estimated at 9.4 million bbls oil which makes [Skogul](#) one of the smallest fields in the Norwegian shelf. [Skogul](#) has an easy tie-back to the [Alvheim](#) field which shows successful infrastructure-led exploration strategy is creating value in licences even with small fields.

Lincoln Crestal and Greater Warwick Area – West of Shetlands

Drilling costs are higher in the West of Shetlands than the rest of the North Sea due to the harsh environment. With [Spirit Energy](#) being yet to trigger Phase 2 of its farm-in joint venture with [HURRICANE ENERGY PLC](#). There is a delay in the development of a tie-back of the Greater [Warwick](#) area to the [AOKA MIZU FPSO](#), and this has resulted in [HURRICANE ENERGY PLC](#) accruing extra costs. Along with the recent oil price crash, it is perhaps likely the new Greater [Warwick](#) Area (GWA) development will be deferred further until a suitable oil price returns... The new play opened by [Lincoln Crestal](#) oil discovery will have to wait...



GWA Joint Venture Agreements Update
 Hurricane Energy plc
 March 6th 2020, 7:22:08 am

RNS Number : 2586F
 Hurricane Energy PLC
 06 March 2020
 6 March 2020

Hurricane Energy plc
 ("Hurricane" or the "Company")

GWA Joint Venture Agreements Update

Hurricane Energy plc, the UK based oil and gas company focused on hydrocarbon resources in naturally fractured basement reservoirs, provides an update in relation to the commercial arrangements with its joint venture partner in the Greater Warwick Area ("GWA"), Spirit Energy ("Spirit").

As part of the farm-in announced on 3 September 2018 ("2018 Farm-in"), Hurricane and Spirit (the "GWA Joint Venture") agreed a phased work

WARWICK Accumulations

Accumulation Name
WARWICK

Description
 The Warwick West well, third and final well in the 2019 Greater Warwick Area programme, was spudded September 24 and drilled to 1,879 metres, intersecting a 931-metre horizontal section of a fractured basement reservoir. The GWA is considered an extension of the Lincoln discovery within the same play.

Accumulation Alias
 Accumulation Type
DISCOVERY

Hydrocarbon Type
 OIL

Discovery Year
 2019

Administrative Area
United Kingdom

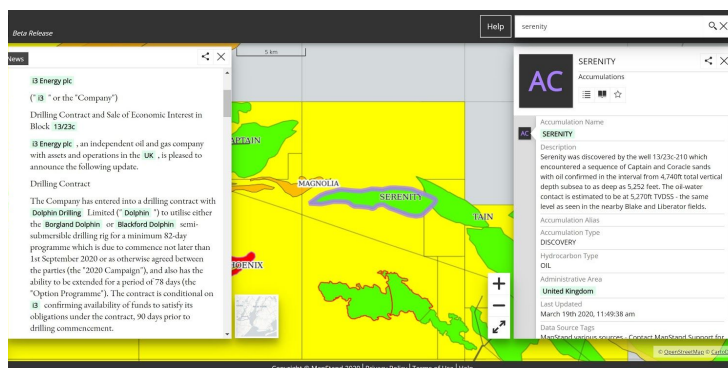
Last Updated
 March 13th 2020, 8:31:07 am

Copyright © MapStand 2020 | Privacy Policy | Terms of Use | Help

Other interesting activity

Dolphin Drilling signed a contract with i3 Energy

The UK and Norway are moving towards a trend of newer and more efficient rigs with automation, and energy efficient systems allow one to reduce OPEX during drilling operations, these cost savings then allow pricing success for rig managers in strict regulations enforced by Norway and large operators such as [Equinor](#). [i3 ENERGY](#) has entered a drilling contract with [Dolphin Drilling](#) to appraise the [Serenity](#) discovery this summer an interesting new trend allowing new cashflow for the drilling company to improve upon their aging assets. As part of the agreement [i3 ENERGY](#) has sold 10% working interest of block [13/23c](#) to [Dolphin Drilling](#) to appraise the discovery.



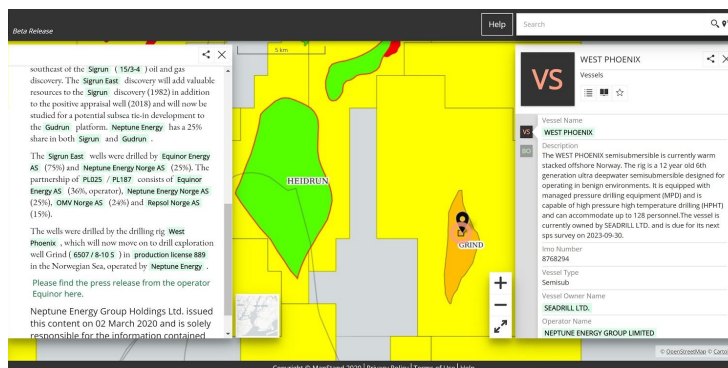
Union Jack Oil Acquisition

An acquisition on mainland UK this week. [Union Jack Oil Plc](#) has recently acquired 35% interest in the producing [Keddington](#) field within [PEDL5](#) from [Terrain Energy Limited](#) and now hold 55% economic interest in [Keddington](#). The operator of the field [Egdon Resources Plc](#) holds the remaining 45%. Extensive geological and geophysical studies by [Union Jack Oil Plc](#) and [Egdon Resources plc](#) indicate the significant potential for further resources to be swept from an additional inexpensive development well...

Hot prospects to watch?

We expect exploration to continue in the areas with infrastructure close to prospects. Here is my hot prospect to watch in the North Sea and is called "[Grind](#)".

After the successful discovery of [Sigrun East](#) earlier this month the [West Phoenix](#) (owned by [Seadrill](#)) semi-submersible has now moved and is currently drilling the prospect "[Grind](#)". [Neptune Energy Norge](#) the operator of licence [PL889](#) with 50% working interest has commenced drilling activities in the exploration well [6507/8-10S](#) in the Norwegian North Sea.

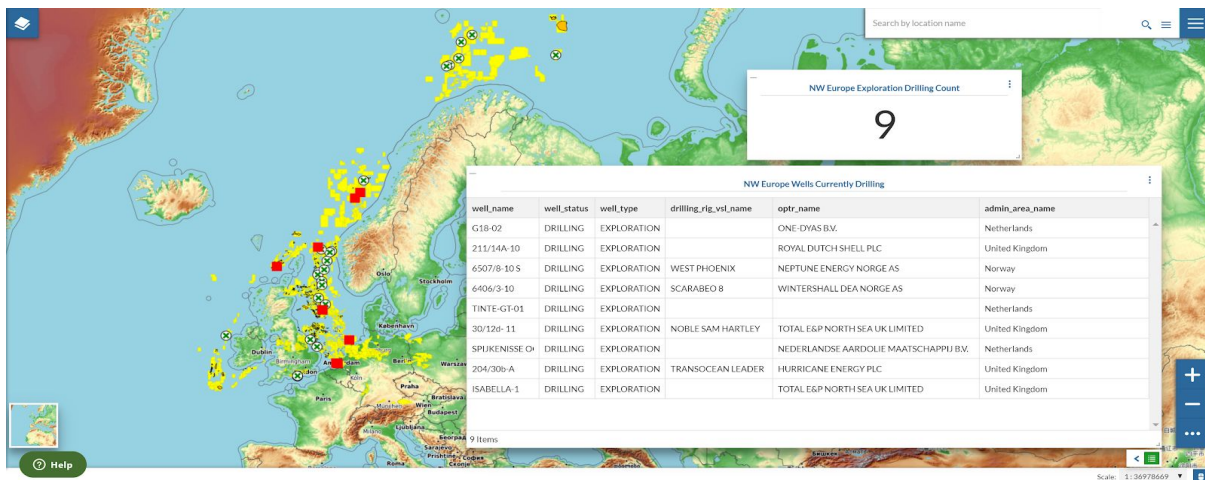


Other partners with a working interest of licence PL889 are [Wellesley Petroleum](#) (20%), [Sval Energi](#) (10%) and [Equinor](#) (20%)

Exploration wells currently drilling in NW Europe

Here are a few key wells currently drilling in NW Europe:

- [6507/8-10 S](#) – [Neptune Energy](#) are drilling prospect [Grind](#) in [PL889](#).
- [6406/3-10](#) – [Wintershall Dea](#) are drilling prospect [Bergknapp](#) in [PL836 S](#).
- [G18-02](#) - [ONE-Dyas](#) are drilling prospect [Kampan](#) in [G18](#).
- [211/14A-10](#) – [Shell](#) is drilling an unknown prospect in [P296](#).
- [TINTE-GT-01](#) - [Wintershall Dea](#) is drilling an unknown prospect in [BRIELLE](#).



Using [MapStand](#)'s commercial cloud-based mapping platform called the “[HUB](#)” I have been able to create a drilling activity dashboard in a geospatial context to monitor and report on exploration drilling. Our [HUB](#) is bespoke and can be tailored to the user with the ability to analyse our data and display it using dashboards.

The [HUB](#) helps to answer many common questions when exploring a region like those bulleted below:

- How many planned wells are in the region? What prospects are these planned wells sitting on? Where are they located in a geospatial context? Were they inherited from an old licence? (we have a the UK relinquishment report layer from the Oil and Gas Authority to aid with the history of planned activities)
- Which wells are currently drilling prospects? Who is drilling the prospect? Which rigs are on location? Where are the rigs going next?

[Isaac Kenyon](#)

NW Europe Analyst - MapStand

South America Round Up

Brazil

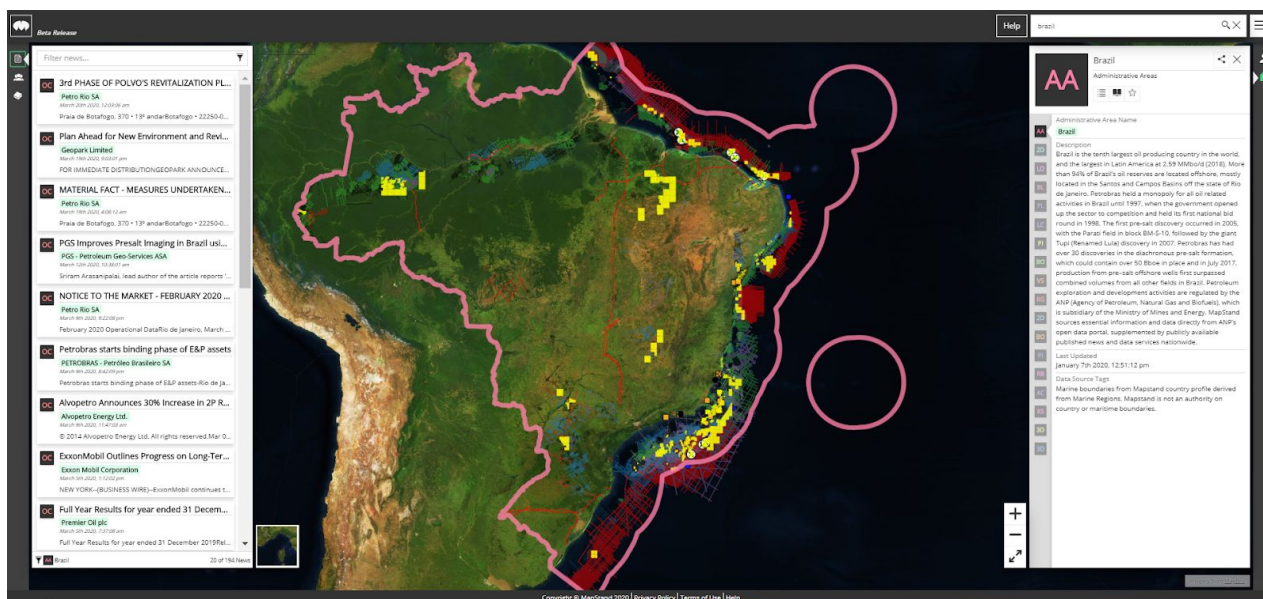
Offshore drilling campaigns:

ExxonMobil's 2020 well campaign offshore Campos and Santos basins is likely to change with CAPEX cuts of up to 20% planned. Currently the company has 17 wells planned in the region, two of which are firm, in blocks [C-M-753](#) and [TITA](#). Drilling is scheduled to start in June 2020.

PREMIER will be drilling [Berimbau/Maraca](#) stacked prospects offshore Ceara Basin in Q3 2020.

PETRORIO has increased production at the [Polvo](#) field by 30%, in its 3rd phase of revitalization plan, totaling 11,000 bbl/d, and reducing lifting costs to under US\$26 per barrel, and the Company's to under US\$18 per barrel. In phase 3 of the revitalization plan, wells POL-N and POL-L have already been drilled, two other wells are now postponed, 20 prospects remain untested in the area.

SHELL will be soon drilling the first well of its drilling campaign in [Saturno](#) pre-salt licence, in the ultra-deepwater area offshore Santos basin. Up to six wells are planned to be drilled in this licence, extending the campaign to 2021, contingent to the results of their first exploration well.



CAPEX revision for 2020:

MAHA ENERGY OPEX is in the range of US\$5/bbl for their Brazilian assets ([Tartaruga](#), [Tie](#)). Maha-2 contingent well has been postponed to 2021. Tests on Maha-1 well for [Tartaruga](#) field have been suspended. Tie South-1 and Tie South-2 planned wells have received environmental approval and preparation works will start in April.

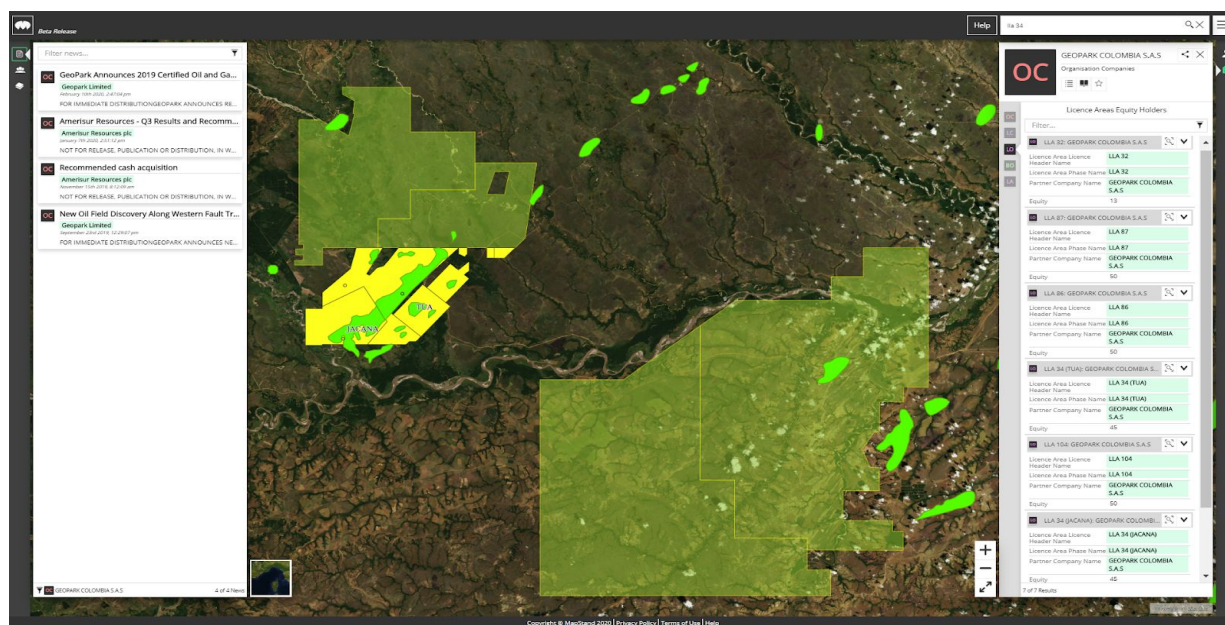
Petrobras divestment

PETROBRAS announced a bidding phase for the sale of its entire interest (100% owned) in [Golfinho](#) and [Camarupim](#) clusters, located in the offshore Espirito Santo basin.

Colombia

Geopark's 2020 work program will concentrate on the development of block [Llanos 34](#) (operated by Geopark with 45% shared equity) and exploration in block [CPO-5](#), which are their most strategic assets in the area.

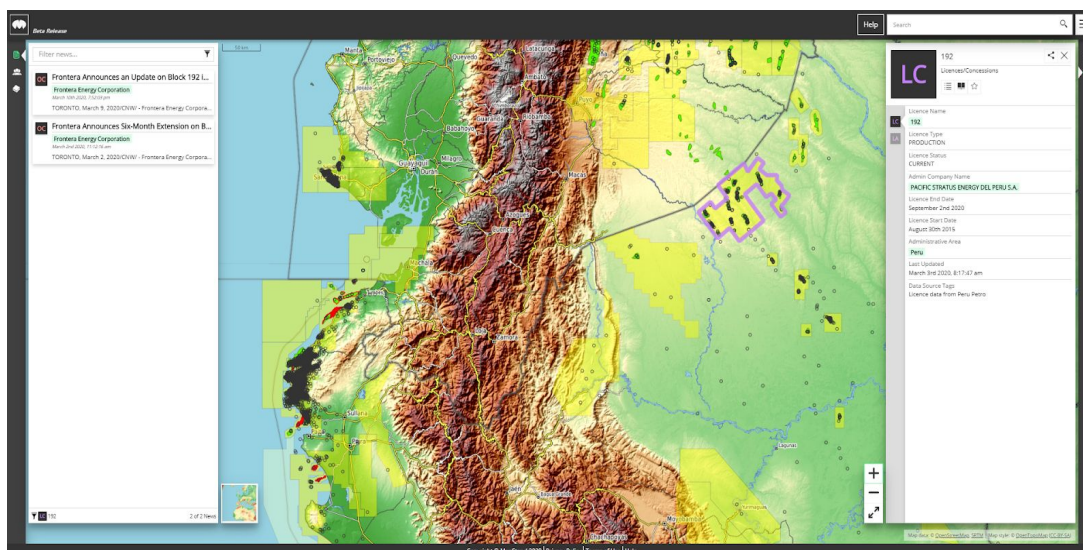
Parex Resources will be focusing in 2020 on the maintenance and development of blocks [Llanos 34](#) and [Cabretero](#), and growth in blocks of [Capachos](#) and [VIM-1](#).



Peru

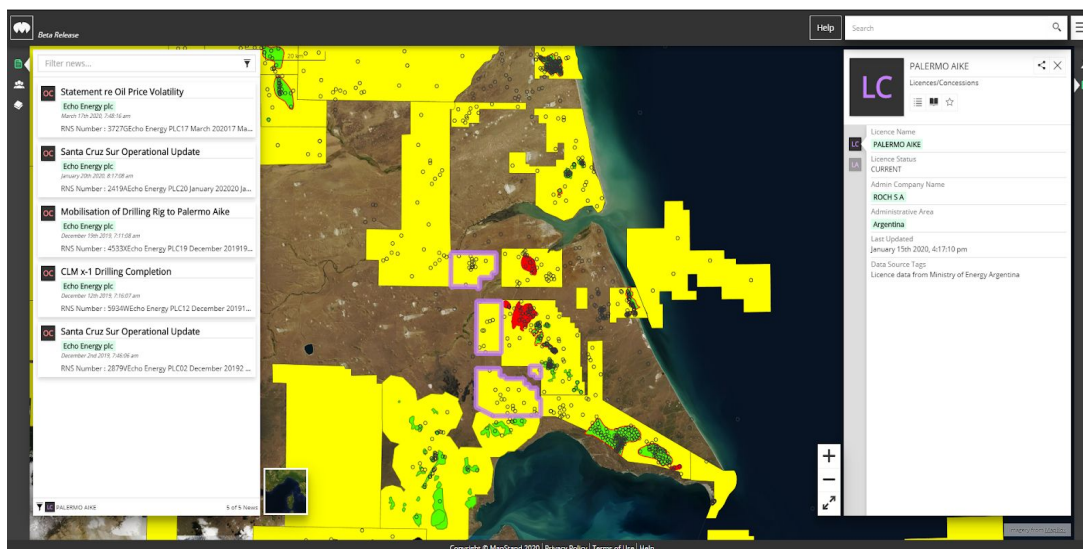
FRONTERA ENERGY announced force majeure for block 192 due to a community blockade which impacted operations within the block. The block is under a short term contract extension, and its production in 2020 averaged 7.100 bbl/d so far.

Contracts for long standing producing fields in the northern region of Peru will come to an end during 2020 and 2021. The authorities have mentioned, through direct communication, that these contracts won't be renewed, and will instead be made available for companies to bid. These are old producing fields, which will need investment to renew maintenance infrastructures and potential development.



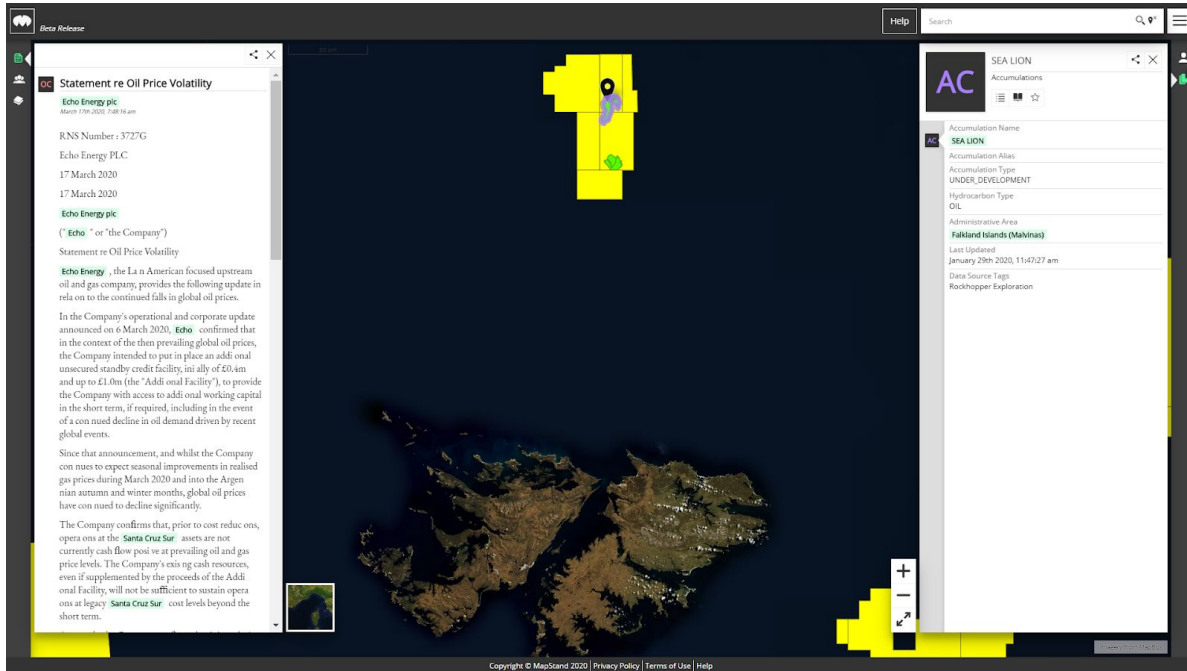
Argentina

Echo Energy will be delaying its activities for the testing of Campo Limite (CLix-1001) well in Palermo Aike concession.



Falklands

Rockhopper and Premier Oil will continue with the agreement with Navitas Petroleum to farm in for a 30% interest in the [Sea Lion](#) project.



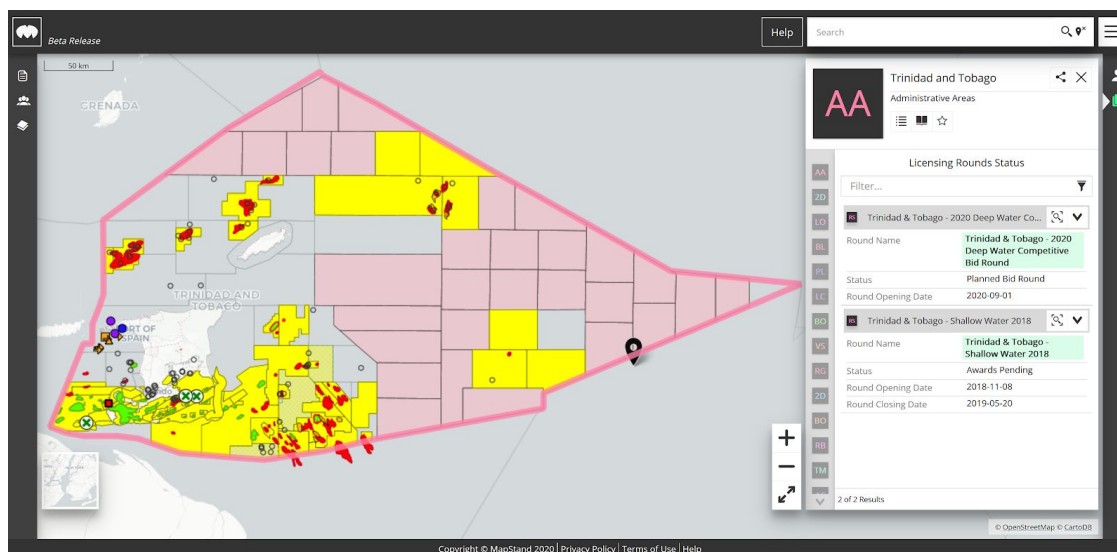
[Diego Esteve Martins](#)
Senior Analyst - MapStand

A Caribbean to Asia Pacific Round Up

Trinidad & Tobago

Trinidad and Tobago has announced the start of the [2020 Deep Water Competitive Bid Round](#). Currently the bid round is a nomination period (March 2nd – June 30th) where companies are invited to nominate any number of areas from the starting 30 open blocks to be included in the bidding section. After the nominations have finished, selected areas will then be put into the bidding round which is aimed to start in Q3 this year. Compared to the rest of the region, Trinidad and Tobago's deep water offshore region remains relatively unexplored with only a several active licenses. [BHP Billiton Petroleum's](#) recent discoveries in the North shows the potential for the region.

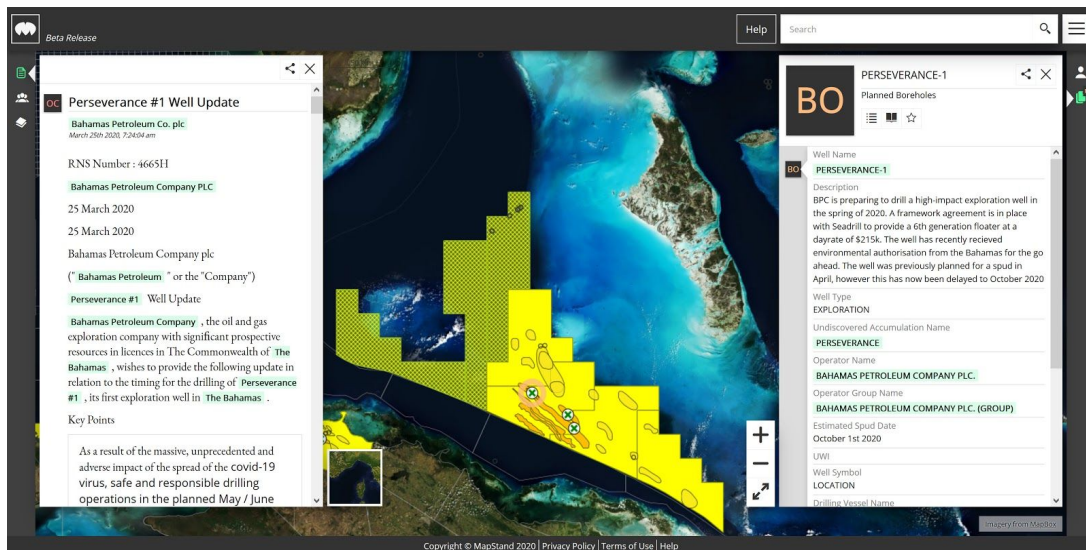
In other T&T activities, [TouchStone Exploration](#) announced that their sidetrack well, [Cascadura-1-ST1](#), unlocked the potential of their recent gas discovery on the [Ortoire](#) licence (80% and operated TouchStone Exploration, 20% Heritage Petroleum). The field is expected to produce over 10,600 boe/d, a significant onshore gas discovery. Further drilling is planned for TouchStone on the licence.



Bahamas

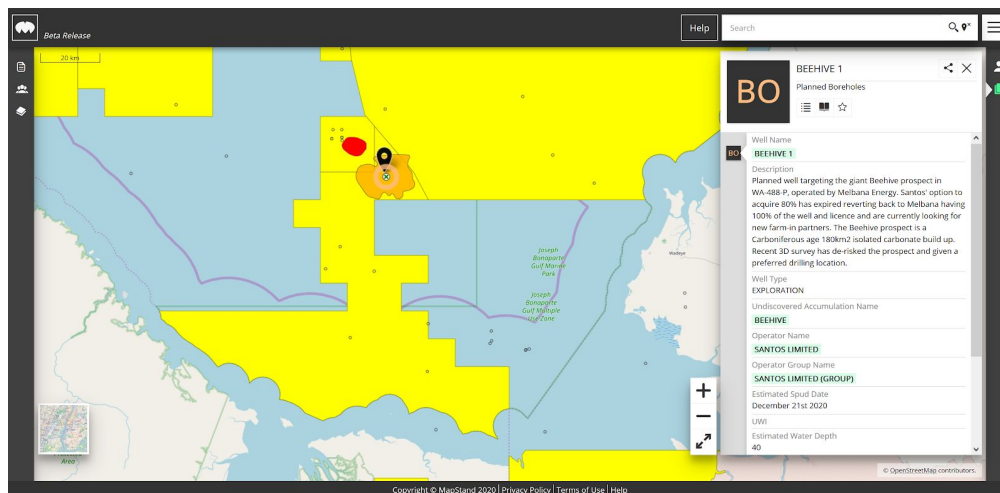
The [Perseverance-1](#) exploration well, located in the [Cooper](#) licence, Bahamas, was originally planned to be drilled in April by the [Bahamas Petroleum Company](#). The well is targeting the northern part of a ~80km fold system which is estimated to hold between 0.7 to 1.4 billion barrels of prospective resources. However, due to current

global situations the well has been postponed twice with it being announced that drilling operations will now commence from October 2020 onwards.



Australia

After having been previously announced that [Santos Limited](#) were going to fund the upcoming [Beehive-1](#) exploration well in licence [WA-488-P](#), Australia, it has now been released that this option has expired. Santos were originally set to fund the well in exchange for 80% in the [Melbana Energy](#) operated licence. The [Beehive](#) prospect is a Carboniferous aged, 180Km2 isolated carbonate build up, thought to be one of the largest remaining prospects in Australia. Melbana are still keen to drill the well and are actively looking for new farm-in partners to help with the funding.



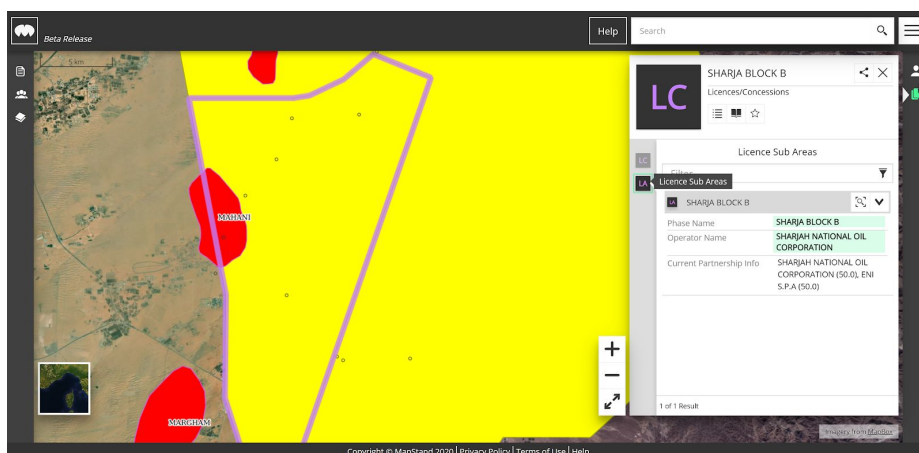
Harry Rennie
Analyst - MapStand

Key Activities in Eastern Europe and The Middle East

United Arab Emirates

[Mahani-1](#) gas project startup to be delayed by up to 2 months. The partnership between [Sharjah National Oil Company](#) (SNOC) and [ENI](#), at the [Sharjah Block B](#) concession, announced in January the discovery of [Mahani](#). The new find of natural gas and condensate is located onshore in Sharjah. The Mahani-1 well has tested gas at flow rates of up to 50 million standard cubic feet per day, together with associated condensate.

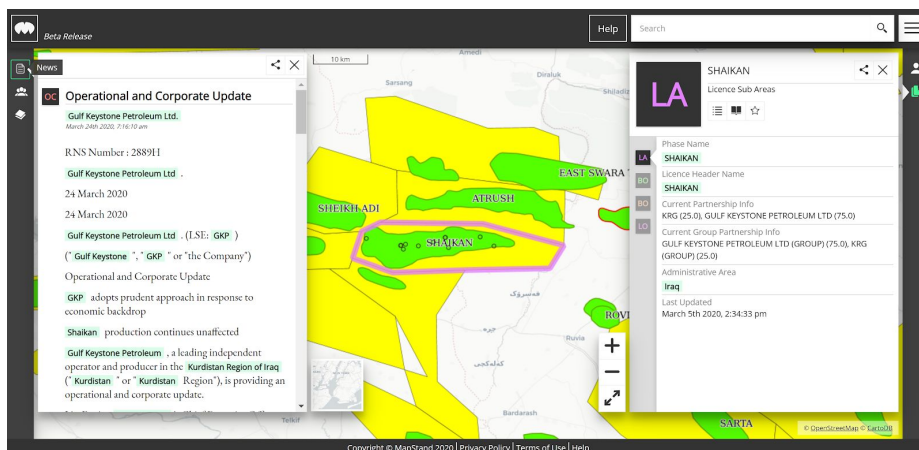
SNOC declared on Tuesday that the impact of Covid-19 will delay the startup of production at its Mahani gas exploration project. However, the project is said not to be impacted at all by current market conditions. ENI has announced it is reviewing all of its projects in the region.



Iraq

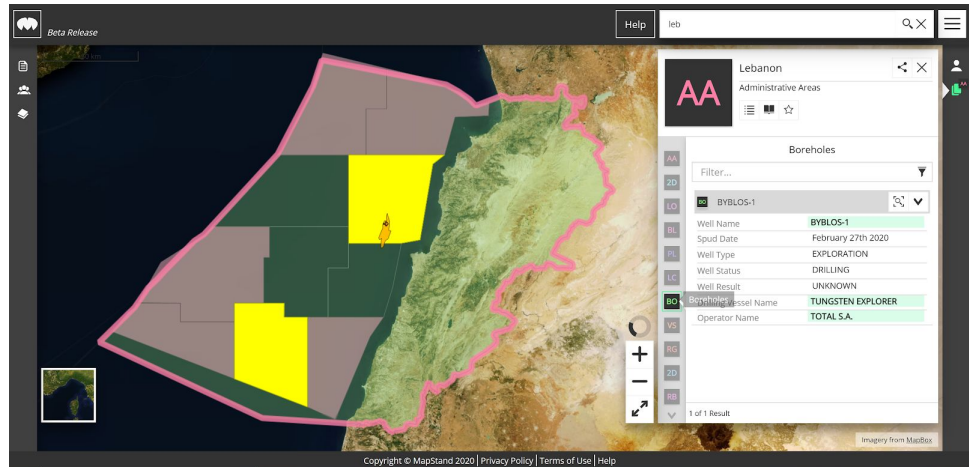
[Gulf Keystone Petroleum](#) halts drilling in [Iraq](#) amid Covid-19. The company released its operational update and explained it would be hard to execute safe drilling operations, resulting in the suspension of the current drilling campaign and suspended drilling of the [SH-13](#) well. The production rate from the [Shaikan](#) field is roughly 38,000 barrels of oil per day with output currently unaffected by Covid-19.

Also within the region, [Genel Energy](#) announced it has scaled back drilling in the Kurdish region of northern Iraq due to delayed payments by the Kurdistan Regional Government, adding to the list of companies in the area hit by the current conditions.



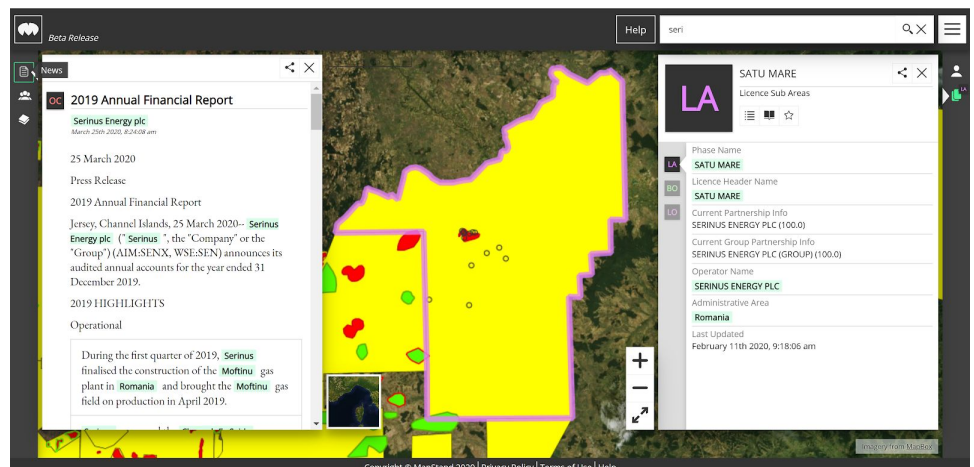
Lebanon's Well to Watch

[Lebanon's](#) first offshore exploration well, [Byblos-1](#), is currently drilling. It spud on 27th February after a delayed start. Interest in the well is high as if successful it could kick start Lebanon's oil and gas industry. The well is planned to take around 60 days and is targeting Oligocene and Miocene clastic objectives, similar to that encountered in the Tamar gas field in Israel. [Lebanon's 2nd offshore licensing round](#) is also currently open and if the well is commercial it could drive interest into more exploration in Lebanon.



Romania licence extension.

[Moftinu-1004](#), the recently drilled well by [Serinus Energy](#), has been producing since 16 February 2020 and is currently performing as expected. The Company has been granted a 12-month extension to the third exploration phase on the [Satu Mare](#) concession, in which Serinus aims to carry out a seismic acquisition program. Given the current situation, Serinus Energy is currently deciding the best course of action to protect the health and safety of its employees and contractors. An additional extension from Romanian authorities will be requested if the program becomes affected.



Coral Byron

GIS Analyst - MapStand

The Angolan incident

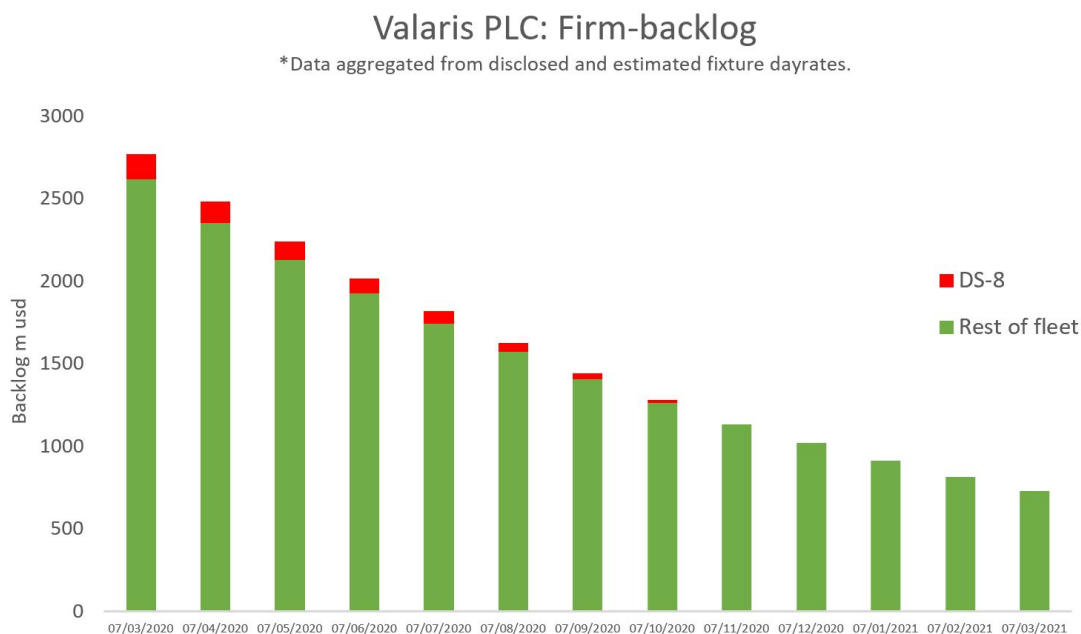
“One does not simply drop a BOP stack” – LinkedIn user. Well the [VALARIS DS-8](#) drillship did.

On March 7, 2020, [Valaris](#) communicated to investors that the *DS-8* experienced a non-drilling incident while operating offshore, dropping a blowout preventer while moving between well locations at the [Canela](#) field in [Block 32](#) (Kaombo project).

The rig, which was on a legacy pre-2014 fixture to [Total](#) at a day rate of \$620k/d, held the world record for most expensive contract awarded. Day rates for 6th/7th generation drillship’s are currently hovering at an average of \$225k/d, but are likely to fall in coming months.

The company warned that the operator could seek to terminate the drilling contract as a result of this incident, costing [Valaris plc](#) \$150m USD in backlog up to November. With [Total](#)’s sharp OPEX & CAPEX reduction plans in response to the ‘you know what’, termination seemed an almost certainty. And it was, with Total announcing the cancellation of the contract 20 days later.

Valaris is actively working to recover the lost BOP stack.



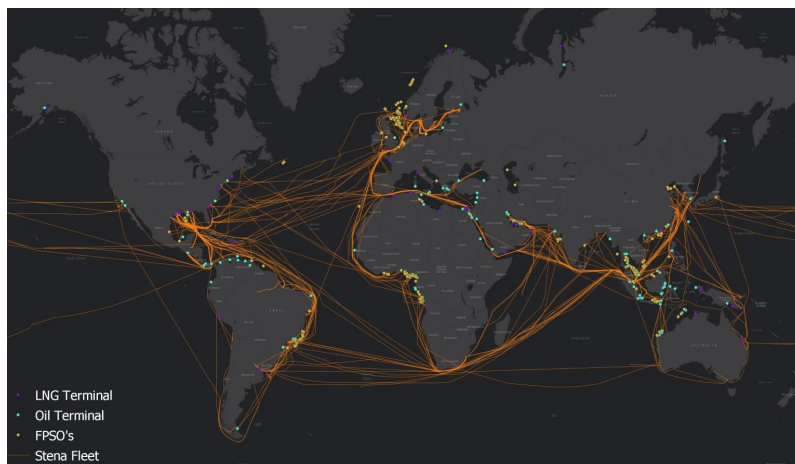
Alexander Burnett
Senior Analyst - MapStand

What could you do with MapStand? Here are a few examples:

Crude flows

MapStand has mapped out the world's oil and gas fields, FPSO's and export terminals. What can they be used for?

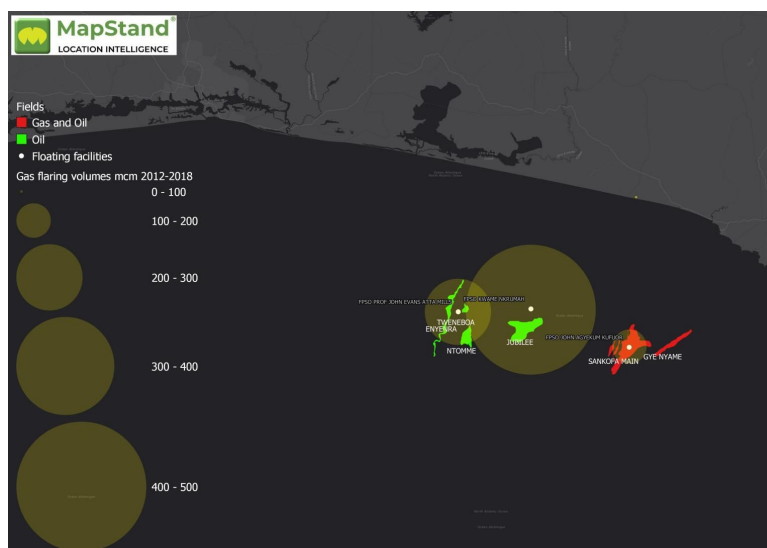
How about tracking crude flows and production. By intersecting tanker AIS data against MapStand's layers, you could in theory track real time offtake data for a variety of assets.



Gas flaring

Using data from the VIIRS instrument aboard the polar-orbiting Suomi NPP satellite, it is possible to identify flaring locations and associated gas volumes. In conjunction with MapStand data, this can be linked directly to companies, field's and even wells.

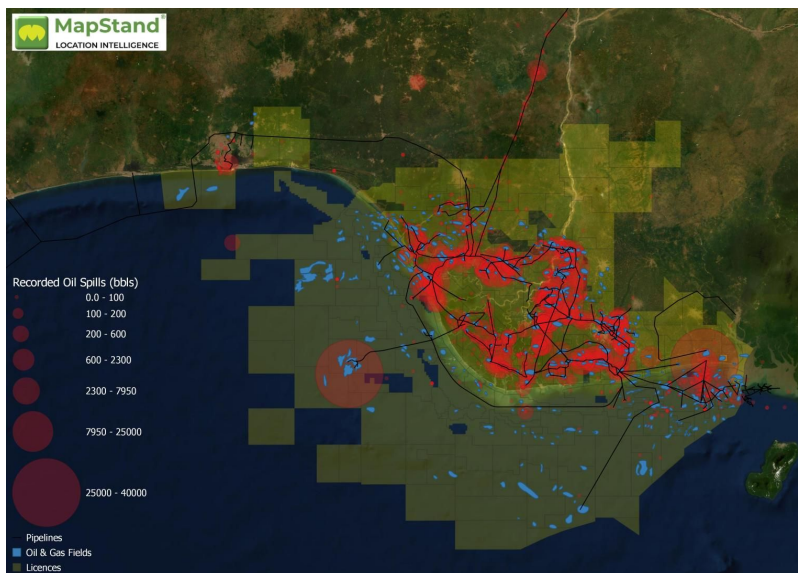
The NOAA and University of Colorado provides the raw data daily and free of charge. Organisations including SkyTruth provide very user friendly versions of this dataset.



Oil Spills

How about mapping the environmental impact of oil spills? A number of governmental organisations are open about these incidents. NOSDRA, The Nigerian National Oil Spill Detection & Response Agency, is one such body.

Did you know that since its inception in 2006, over 10,000 oil spill incidents have been recorded and published in Nigeria!



Do you have an idea for a project? If so, get in touch. We're always happy to lend a helping hand with our data or even provide training.

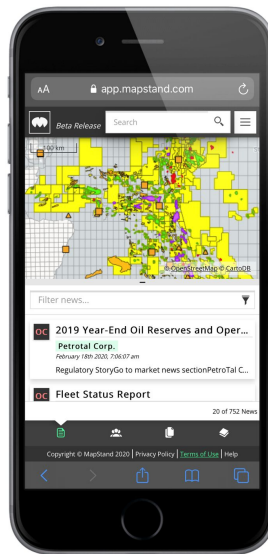
[Alexander Burnett](#)

Senior Analyst - MapStand

Support

Development News

In February we saw the platform's user interface optimized for smart phone use. Because we are not always sitting at a desk (thank goodness!) we rely more and more on our smartphones for the information we need on the move. Now, whenever you need to catch up with industry news and activities or check background info before your next meeting, MapStand is right there, in your pocket.



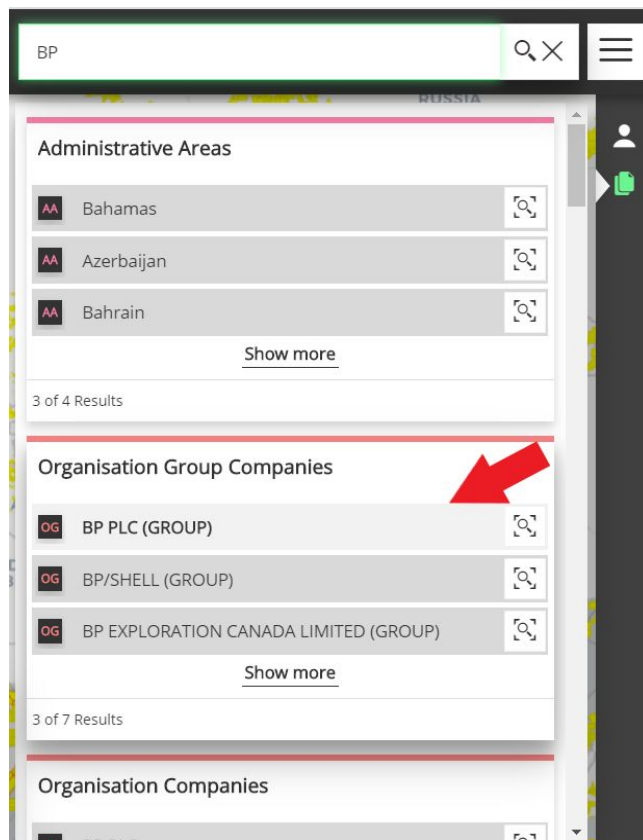
Don't forget to check-out the new layers that were added: Rigs and Vessels were separated, Planned 2D Seismic Surveys, Platforms, Floating Facilities, Terminals, 2D Seismic Surveys (2D lines grouped into 2D surveys) More details about the February release can be found [here](#).

Helpful Hints and Tips

Did you know that creating a MapStand community profile opens opportunities for all kinds of different users who want to share their knowledge, experience or current projects? For more information on this topic please take a look at our latest [blog](#).

MapStand is able to display all the assets belonging to a company with one click view. Simply type in the name of the company in the [Search](#) Bar and select the company in the [Info](#) panel. The map will then display all assets associated with that company.

To display all assets for a company (including subsidiaries) make sure you select the company name from the Organisation Group Companies list, in the [Info](#) panel.



Questions & Answers

Q: How do I display the premium layers?*

* Premium layers are currently available in the Community (free) subscription. However, once our commercial offering becomes available, you will need to upgrade to our Professional subscription to access these.

A: Using the Layer panel, simply click on the eye icon. For more details on how to turn layers on or off, display the legend/key, reorder or change the transparency of layers, click [here](#)

Q: How do I join the MapStand community?

A: Firstly, sign up to the [platform](#) – it's free, what's stopping you? Secondly, add details of projects you've worked on or research you've done to your profile. Thirdly, add relevant map objects to those projects. A more detailed guide on how to do this can be found [here](#).

Q: How do I add my contact details so other MapStand community members can get in touch?

A: To allow other members of the MapStand community to contact you, consider adding your email address, links to your website, [LinkedIn](#) and [Twitter](#) details to your profile. To do this, select the Hamburger menu > Edit profile. For more details click [here](#).

Getting Help

To get the most out of MapStand we recommend taking a few minutes to look at the Getting Started videos, user guides and tutorials on our [Support Portal](#).



If you can't find the answer to your query there or want to provide feedback or have ideas or suggestions, please contact us at any time via the Help button on the [platform](#) or email the [Support Team](#).

[Alison Graham](#)

Customer Services Manager - MapStand

Join the Community

To find out more about our crowdsourced data. Visit <https://mapstand.com> or sign up to our platform at <https://app.mapstand.com>.

Follow MapStand on our [LinkedIn page](#) for daily updates!