

Supported Peripherals

CX-20, CX-30, CX-50

1. Introduction

ClickShare Conference brings wireless conferencing, a revolutionary workplace experience. It combines powerful remote communication with easy-to-use wireless collaboration, in any meeting space.

Start a meeting from your device, use your preferred conference tool. Automatically you connect wirelessly to room cameras, speakerphones, sound bars for a more immersive meeting. In less than 7 seconds you conference, collaborate and click with our secure, connected and cloud managed solution.

To enable “Bring your own meeting” through ClickShare Conference, different types of peripherals can be connected to the Base Unit and exposed to the laptop via the Button or the ClickShare application. All models of ClickShare Conference support the use of camera’s and speakerphones, either separately connected to the Base Unit or via a single connection in case of an all-in-one.

Two ClickShare Conference models are compatible with touch panels; the CX-30 and CX-50. This means that touch sensitive panels, when connected via HDMI as well as USB to the ClickShare Base Unit, offer touch back functionality, annotation and blackboarding and future touch-enabled functionality. Touch back allows the user to touch control the PC that is sharing via either the ClickShare Button or the ClickShare App from the meeting room screen. The annotation functionality allows a user to freeze the content on the screen and start drawing on top of it. Blackboarding gives the user a blank canvas to draw on.

Every ClickShare unit can be set up quickly and easily, without the need to install applications or drivers, without training and without cables. Only minimal IT support is required, slashing trouble tickets and delivering a strong ROI. Keep your data safe behind the firewall, with secure network integration providing the freedom to share your work with confidence.

The ClickShare Conference devices do not support PoE(+). In case this is a requirement, a PoE+ splitter can be used in combination with the CX-20 and CX-30. The list of tested splitters can be found at the bottom of the document.

The touch drivers used by our ClickShare Base Unit are generic, and therefore there is a high probability that your touch screen will work as expected. In most cases your touch display will work just fine. To avoid any purchase risk, please contact Barco Service Desk with all information with respect to the screen (Brand, type, model...) so we can arrange for an investigation or even an on-site tryout.

For the camera and the speakerphone, we support the generic USB devices, meaning most brands will work just fine. Note that the peripherals attached require following characteristics to work with a ClickShare Conference setup:

- **USB peripherals only:** cameras connected via the HDMI input and speakerphones connected via the jack are not supported. All devices require a USB connection to be used for Conferencing.
- **Cameras with USB 2.0 data rates** are required. Since the CX-20, CX-30 and CX-50 operate with USB-2.0 ports, the camera needs to support USB 2.0 data rates. This is a mode that most cameras support.
- Only peripherals with **USB 2.0 power can be powered directly by the Base Unit**. In case the peripheral requires to draw more power, either connect it to the USB-C connector (if this is indicated in the list to work) or use a powered USB hub in between.

- **Speakerphone devices with echo-cancellation built-in** are required. Since the Base Unit will not process the sound to cancel echo, devices with built-in echo-cancellation are required to offer a good experience to the end user of the system.
- **Separate mics and speakers not supported.** ClickShare Conference only supports speakerphone devices, which contain both microphone and speakers in one peripheral. Separate microphones (e.g. in cameras) or USB speakers are not supported. Some devices (e.g. the Cisco Room Kit mini) do not expose a speakerphone, but a separate speaker and microphone on one USB endpoint. This works too, as long as the device can do echo-cancellation.
- **Only one camera and one speakerphone** can be attached to the Base Unit at this moment. Behaviour when multiple such devices are attached to the Base Unit is not defined.
- Make sure to **keep your peripherals up to date.** We strongly recommend keeping both peripherals and ClickShare Base Units up to date. Compatibility and support are only given to either specific versions (if marked in the notes as only working with a specific firmware version) or the latest firmware version for a peripheral.

2. List of supported touch screen panels

2.1. Touch panels tested and supported by Barco ClickShare Conference

The following list is a non-exhaustive list of touch panels and touch controllers, tested on and supported by the ClickShare CX-30 and CX-50. Please verify whether the touch panel connected is listed below. In case the touch panel manufacturer is not mentioned by name, please verify whether the panel is using a supported controller listed below. Some touch panels, denoted with an asterisk (*) require a setup process described within this document to allow interoperability with the ClickShare CX-30 and CX-50. **Note:** Active pens are not supported at this moment.

- 3M PCT touch screens (e.g. Iiyama T2435MSC)
- ActionStar dual touch panels
- Atmel panels
- Baanto ShadowSense™ touch technology panels
- Cando dual touch panels
- Chunghwa panels
- CTOUCH CLAP-65UHDA5
- CVTouch panels
- Cypress TrueTouch panels
- DELL C5518QT
- eGalax dual-touch panels
- Elan Microelectronics touch panels
- Elo TouchSystems IntelliTouch Plus panels
- Flatfrog InGlass Technology (LG 23ET63V-W, SMART SBID-7075P, DELL C5518QTt)
- GeneralTouch 'Sensing Win7-TwoFinger' panels
- GoodTouch panels
- Hanvon dual touch panels
- Iiyama touch panels
- Iitek dual touch panels
- IrTouch Infrared USB panels
- LG Display panels (Dell ST2220Tc)
- LG 23ET63V-W
- Lumio CrystalTouch panels
- Microsoft Surface Hub
- MosArt dual-touch panels
- Newline X7 touch panels
- Panasonic multitouch panels
- PenMount dual touch panels
- Perixx Peripad 701 touchpad
- PixArt optical touch screen
- Pixcir dual touch panels
- Quanta panels
- Samsung panels with touch overlay*
- Sharp touch panels
- SiS multitouch panels
- SMART SBID-7075P
- Stantum multitouch panels
- Touch International Panels
- TSI touch panels*
- Unitec Panels
- Wistron optical touch panels
- XAT optical touch panels
- Xiroku optical touch panels
- Zytronic touch panel

2.2. Touch panels tested and validated by our community

The following list is a list of touch panels and touch controllers, positively tested on the ClickShare Conference by our sales community. Note that the compatibility of these touch panels has not been verified by Barco's own R&D testing team. Barco cannot guarantee the full functionality in all use cases.

Note: Active pens are not supported at this moment.

- Clevertouch Plus Series High Precision (55",65",75", 86")
- Clevertouch Pro Series High Precision (55",65",75", 86")
- Clevertouch Pro Series Capacitive (65")
- Clevertouch Pro Series E-Cap (65",75", 86")
- Clevertouch V-Serie (65",75",86")
- Newline X series touch panels (X6, X8, X9)
- Newline RS series touch panels (65",75",86")
- Newline VN series touch panels (65",75",86",98")

2.3. TSI touch-overlay and Samsung panels with PulseIR setup and configuration

When the touch options are not appearing on the wallpaper when you connect the USB cable to the Base Unit or if touch functionality is detected, but does not seem to work, please follow the instructions below:

1. Download IDS Pulse from the support page of www.tsitouch.com. Depending on your system you will need to select the appropriate version for macOS or Windows. The ZIP file will be saved to your downloads folder. Unzip the file to a location of your choice for easy retrieval.
2. Connect the TSI touch-overlay via the USB cable to the laptop.
3. Open "PulseIRController.exe" from the downloaded folder– screen shot below of the interface.
4. Within the list of devices, the TSI touch-overlay will come up with the overlay name and show you its parameter settings, below this list you can make the changes to parameter settings.
 - a. Chang "touch mode" from "Auto" to "Stylus".
 - b. Click the "apply" then "close" buttons.
5. Reconnect USB cable of the TSI touch-overlay to the CSE-200, CSE-200+ or CSE-800 and test to confirm changes worked.

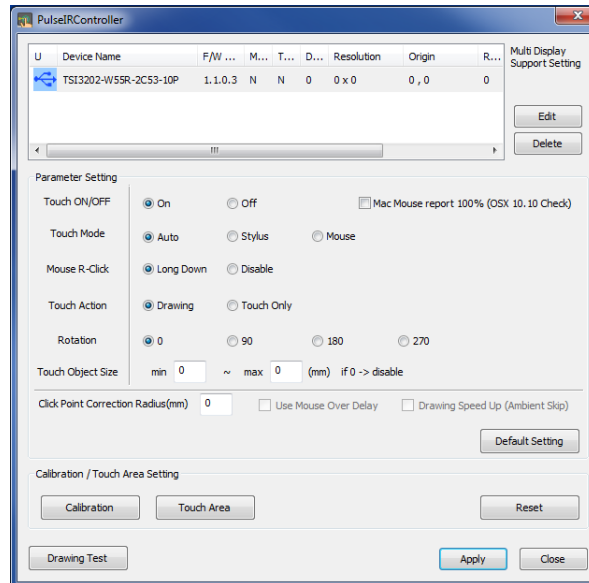


Figure 1: The PulseIRController application from TSI

3. List of supported cameras and speakerphones

The following list is a non-exhaustive list of USB cameras and USB speakerphones that have been tested by the ClickShare development team. This list is divided into two categories:

- List of Barco certified peripherals: these devices are validated (tested firmware is mentioned) by our development teams every time we release a firmware version. This is the list of devices that we actively support through our vendor partnerships and are the recommended devices to use in combination with ClickShare Conference.
- List of validated peripherals: these devices have been tested internally or by our community (tested firmware is mentioned if info is available) and found to work. Compatibility of the devices tested and validated by Barco will be tested from time to time.

Please verify whether the peripheral is listed below. In case the peripheral is not mentioned by name, there is still a great chance that it works, since we support the generic USB standards.

3.1. Barco certified peripherals:

- Logitech MeetUp (validated with peripheral firmware version 1.11)
- Logitech Rally (validated with peripheral firmware version 1.4)

3.2. Validated peripherals

Devices tested and validated by Barco to work with ClickShare Firmware **v2.5**:

Peripheral name	Firmware version	Video	Audio	Remarks
Aver 340		✓		
Aver 540		✓		
Aver VB342		✓	✓	
Aver VC520Pro		✓	✓	
Cisco Roomkit Mini		✓	✓	Connecting the Cisco Roomkit bar to a CX Baseunit disables the Roomkit bar from being used by the Cisco system
Dante AVIO USB adapter			✓	Tested in combination with Shure MXA-310 microphone and Shure P300 processor
Huddly GO	1.3.11	✓		Requires Huddly firmware 1.3.1 or higher. Only works on the USB-C port with A-to-C adapter or when using powered USB hub
Huddly IQ	1.3.13	✓		Only works on the USB-C port with A-to-C adapter or when using powered USB hub
Jabra Panacast	3.8.15	✓		Only works on the USB-C port with A-to-C adapter or when using powered USB hub
Jabra Speak 510	1.28.0		✓	
Jabra Speak 710	1.28.0		✓	
Jabra Speak 810	1.8.0		✓	
Konftel 55Wx	3.1.4		✓	Tested in combination with Konftel OCC Hub and Konftel CAM20
Konftel 800			✓	Tested in combination with Konftel OCC Hub and Konftel CAM50
Konftel CAM20		✓		Tested in combination with Konftel OCC Hub and Konftel 55Wx
Konftel CAM50		✓		Tested in combination with Konftel OCC Hub and Konftel 800



Logitech Group		✓	✓	
Logitech ConfCam Connect	10.0.17763.1	✓	✓	
Logitech Brio	1.0.379	✓		
Logitech HD Pro C920	7.55.1085	✓		
Logitech HD Pro C922	7.55.1085	✓		
Logitech HD Pro C930	7.55.1085	✓		
Meeting Owl	2.9.0.0	✓	✓	
MXL AC-406			✓	
Polycom Studio		✓	✓	
Shure MXA310W + P300	3.1.6 + 3.1.8		✓	MXA-310 and P300 configured using Dante Controller software
Sennheiser SP-10			✓	
Sennheiser SP-30+			✓	
Sennheiser SP-220			✓	
Sennheiser TeamConnect Ceiling 2			✓	Tested in Dante setup with Shure P-300
Stem Audio Table			✓	Needs PoE+ (IEEE803.2at) with internet connection for power and boot sequence
Vaddio ConferenceShot AV	1.4.0	✓	✓	
Vaddio ConferenceShot FX		✓		
Vaddio HuddleShot	1.0.0	✓	✓	
Vaddio RoboShot 30 USB		✓		
Yamaha YVC-200	1.03		✓	
Yamaha YVC-300	2.0		✓	
Yamaha YVC-330			✓	
Yamaha YVC-1000	3.0		✓	

Devices tested and validated by our community:

- Marshall USB PTZ camera model CV610-U2
- Icron USB Extender - USB 2.0 ranger model 2304GE-LAN, tested with Shure P300 and Marshall CV610-U2
- ClearOne Converge huddle
- ClearOne Converge Pro2
- Evoko Mimo
- Yamaha FLXUC-500
- Yamaha FLXUC-1500
- Yamaha ESB-1080
- Poly Eagle Eye IV USB
- Poly Eagle Eye Cube USB
- Lumens VC-B2U, VC-B10U, VC-B30U
- QSC I/O-USB Bridge and USB port on the back of the Core 110f processor
- Poly Studio X30
- Yealink USB camera UVC80

3.3. Devices known not to work or with limitations

- Yamaha CS-700 (tested with peripheral firmware version 1.3.0.1130): Issues with camera image – under investigation by Yamaha
- Nureva HDL300: Changing volume through the remote does not work anymore when connected to a ClickShare – under investigation
- Dell P2418HZ: Speakerphone audio is not good - under investigation
- Crestron US-SB1-AV, Crestron UC-SB1-CAM: No sound - under investigation
- Vaddio AudioBridge and Vaddio OneLink AV – Bridge: Not supported at this moment

- Crestron HDMI-USB converter model HD-CONV-USB-200 and HD-CONV-USB-100
- Crestron AVIA DSP 1283
- AMX Acendo Vibe: No audio – under investigation
- Biamp Devio– under investigation
- Bose VB-1 and Bose EX-440C DSP – under investigation
- Panasonic AW-UE4KG Camera
- Audio Technica ATDM-0604
- Polycom CX-5100 – camera not working
- Nexvoo NexBar N110 – Speaker not working
- Stem Audio Wall – Audio pickup volume too low
- Extron MediaPort 200 – no audio
- Logitech ConfCam BCC950

4. List of supported PoE+ splitters for CX-20 and CX-30

The following list of PoE+ splitters have been tested to work with the ClickShare CX-20 and CX-30 devices and have a power plug that fits with the ClickShare Base Unit. If your standards compliant PoE+ splitter is not listed below, there is still a great chance that it will work without any problems.

- PLANET POE-162S
- POS-3000-v3
- EDiMAX GP-101ST
- D-Link DPE-301GS
- CERiO POE-PD04S