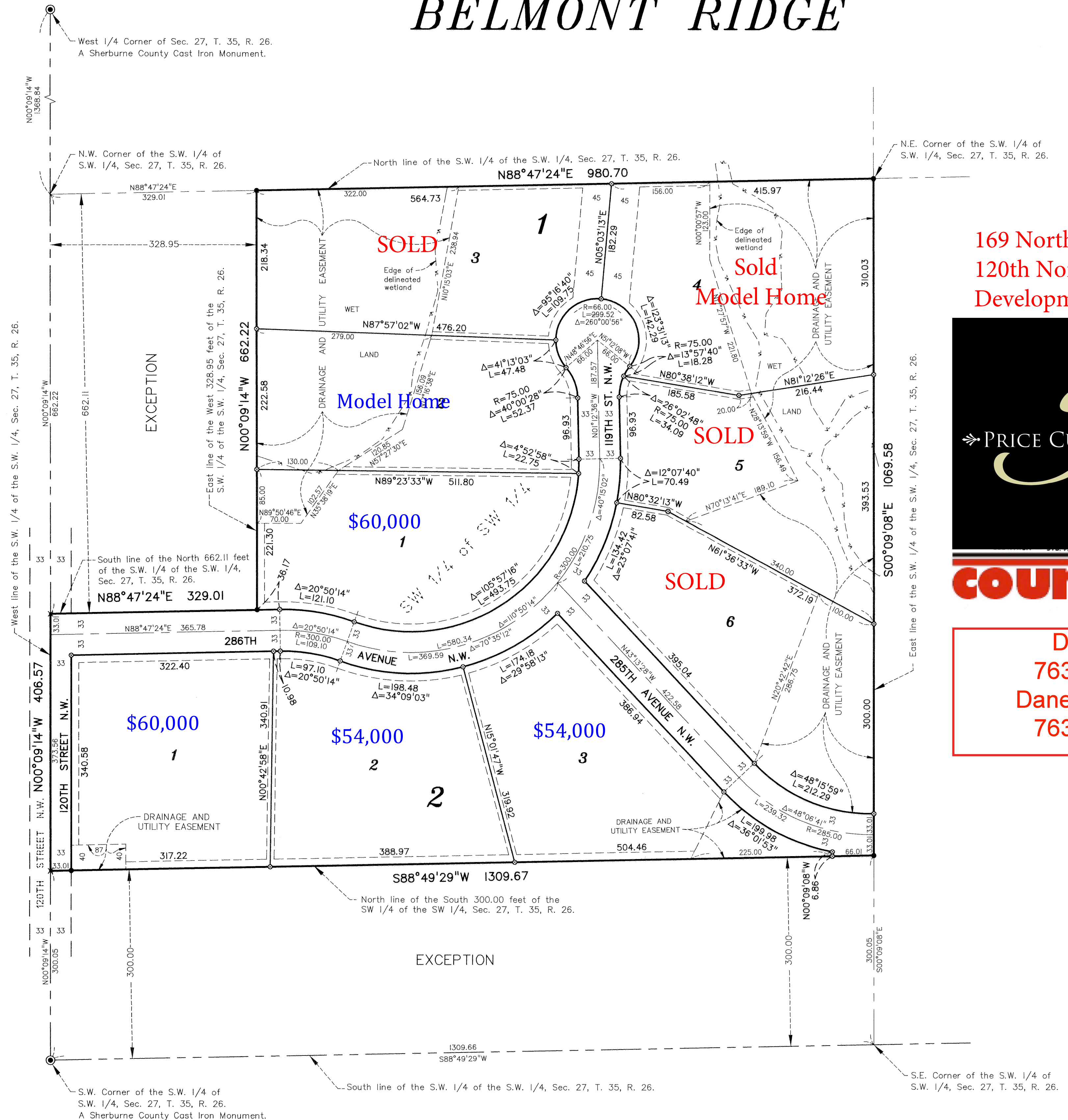
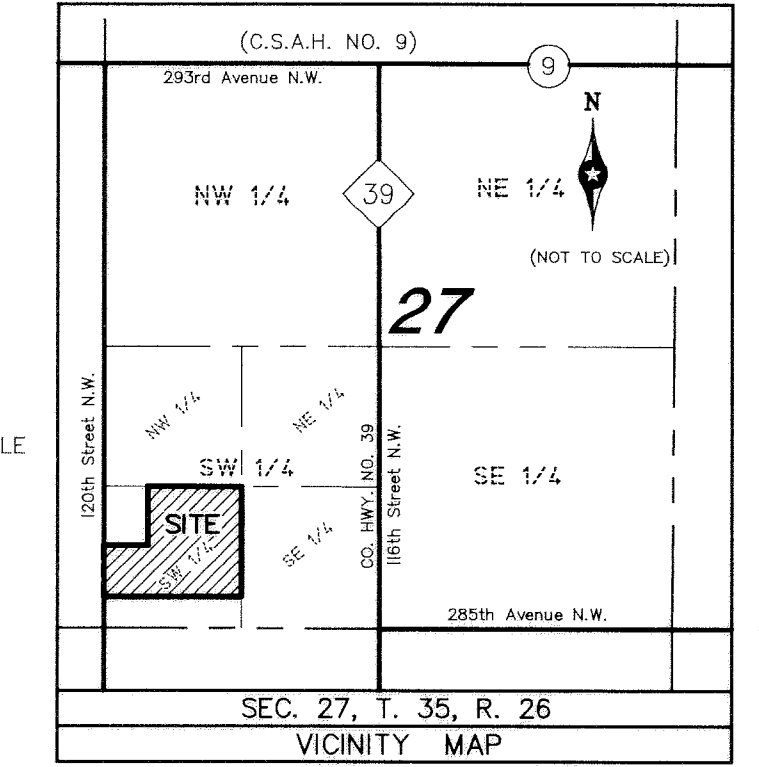


BELMONT RIDGE



BALDWIN TOWNSHIP
SHERBURNE COUNTY, MN

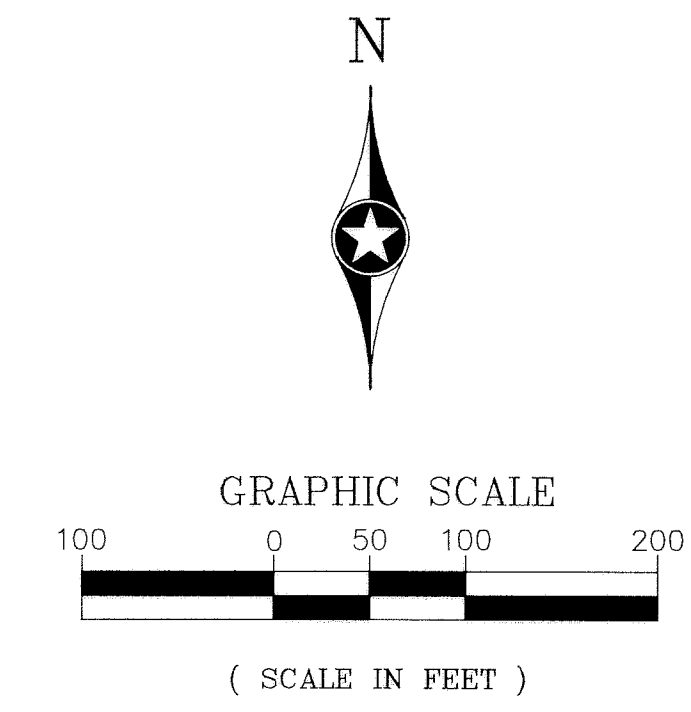


169 North to 283rd East to
120th North to 286th Right to
Development

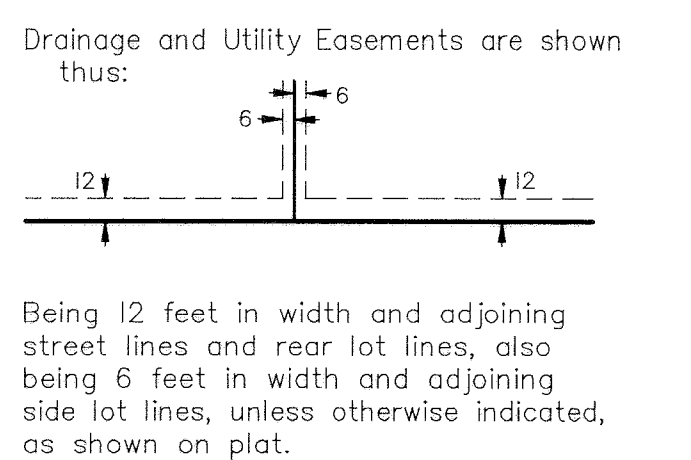


counselor
realty.com

Dave Wills
763-670-3678
Danella Swanson
763-772-2274



- Scale: 1 inch = 100 feet
- For the purposes of this plat, the West line of the S.W. 1/4 of the S.W. 1/4, Sec. 27, T. 35, R. 26, is assumed to bear North 00°09'14" West.
- Denotes a 1/2 inch x 1/4 inch iron monument set with a plastic plug stamped R.L.S. 42648.
 - Denotes a 1/2 inch x 1/4 inch iron monument with a plastic plug stamped R.L.S. 42648, to be set within 1 year of recording this plat.
 - Denotes an iron monument found.
 - ✕ Denotes a Magnetic Nail found.
 - ⊙ Denotes a found Sherburne County Cast Iron Monument.
 - - - - - Denotes edge of delineated wetland.



John Oliver & Associates