

RED FOX HOLLOW

City of Ham Lake
County of Anoka
Sec. 36, T32, R23

NW CORNER OF THE NW
1/4 OF THE SW 1/4 OF
SEC. 36, T. 32, R. 23

NORTH LINE OF THE NW
1/4 OF THE SW 1/4 OF
SEC. 36, T. 32, R. 23

RLS #3959



DAVE WILLS
763-670-3678
DANELLA SWANSON
763-772-2274



Lexington

WEST LINE OF THE NW
1/4 OF THE SW 1/4,
SEC. 36, T. 32, R. 23

WEST LINE OF THE NW
1/4 OF THE SW 1/4,
SEC. 36, T. 32, R. 23

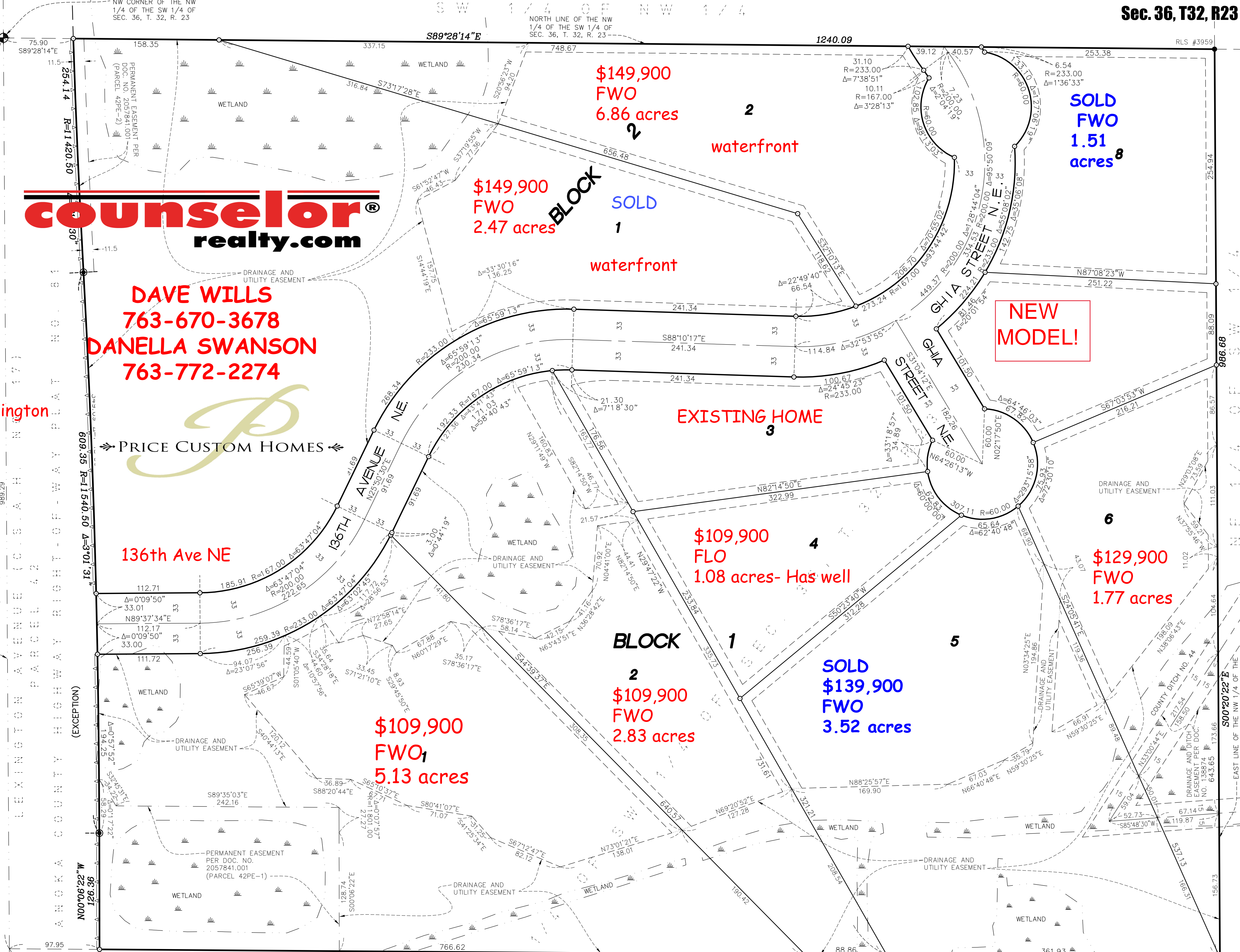
EAST LINE OF THE NW 1/4 OF THE
SW 1/4 OF SEC. 36, T. 32, R. 23

82' 26" W

1/2 INCH

60

60



\$149,900
FWO
6.86 acres

SOLD
FWO
1.51 acres⁸

\$149,900
FWO
2.47 acres

BLOCK 1
SOLD

NEW MODEL!

EXISTING HOME

\$109,900
FLO
1.08 acres- Has well

\$129,900
FWO
1.77 acres

BLOCK 2
\$109,900
FWO
2.83 acres

SOLD
\$139,900
FWO
3.52 acres

\$109,900
FWO¹
5.13 acres

LEGEND

⊕ DENOTES FOUND ANOKA COUNTY CAST IRON MONUMENT

LINE 331.23 FEET NORTH OF AND PARALLEL WITH THE SOUTH LINE OF THE NW 1/4 OF THE SW 1/4 OF SEC.

DRAINAGE AND UTILITY EASEMENTS ARE SHOWN THUS: