



Flue Kits and Components

Wholesale Product Catalogue

www.enieng.co.nz

Contents

Stainless Steel Flues	3
Stainless Steel Offsets & Shields	4
Galvanised Steel Liners.....	5
Ceiling Plates & Chimney Flashing	6
Floor Penetration Units & Mounting Rails	6
Cowls & Spacer Brackets.....	7
Miscellaneous.....	8
Kits.....	9
Ø150 Free Standing Flue Kit 4.2m	9
Ø150mm EQC Flue Kit	10
Ethos Woodfires.....	11

Contact Us:

(03) 349 7052

sales@enieng.co.nz

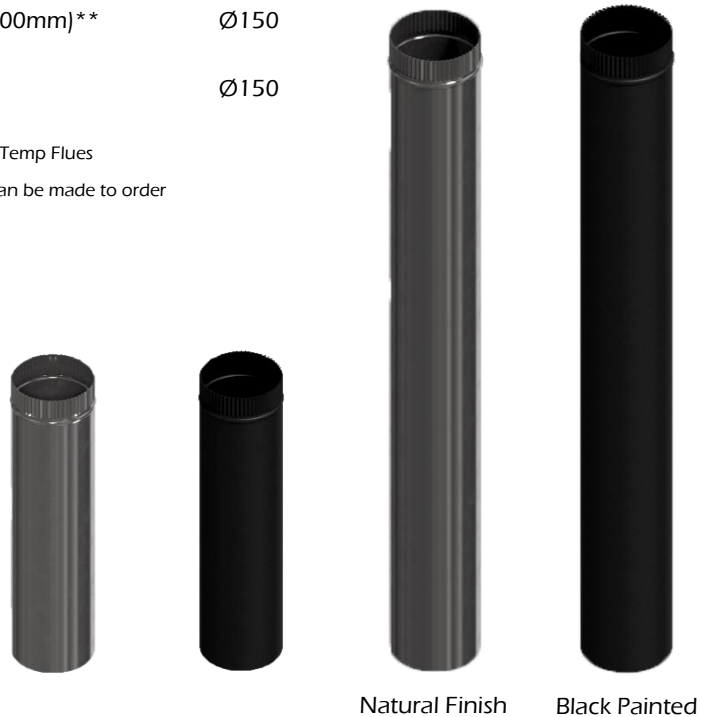
www.enieng.co.nz

Stainless Steel Flues

EXS-11001	Stainless Steel Flue (1200mm)	Ø130
EXS-11002	Stainless Steel Flue (600mm)	Ø130
EXS-11003	Stainless Steel Flue (1200mm)	Ø150
EXS-11032	Stainless Steel Satin Black (1200mm)**	Ø150
EXS-11004	Stainless Steel Flue (600mm)	Ø150

*Details below on the use of Stainless Steel Satin Black Hi Temp Flues

** Ø100mm, Ø175mm & Ø200mm Stainless Steel Flue can be made to order



*Stainless Steel Satin Black Hi-Temp Flues must be prepared correctly, without the use of chemical flue cleaners or steel chimney brushes. Stainless Steel Satin Black Hi-Temp Flues should not be used on a heater burning treated or wet (unseasoned) wood. Paint finish may change depending on heater operation and is designed to be a maintainable finish. Any touching up of paint finish should only be with genuine Stove Bright Aerosol spray.

Stainless Steel Satin Black Hi-Temp Flue sections should be secured with stainless steel rivets or self-tapping screws.

Stainless Steel Satin Black Hi-Temp Flues must be installed in accordance with the heater manufacturer installation instructions. It is the responsibility of the installer to ensure no water leaks into the Hi-Temp Flue.

Stainless Steel Offsets & Shields

EXS-13007	Telescopic Offset Bend (Stainless Steel)	Ø130
EXS-13008	Telescopic Offset Bend (Stainless Steel)	Ø150
N/A	Custom Offset Combination (400mm centres)	Ø150/200/250mm
EXA-10015	Half Shield	Ø150 x 1200mm
EXA-10025	Half Shield	Ø175 x 1200mm



Offset Bend

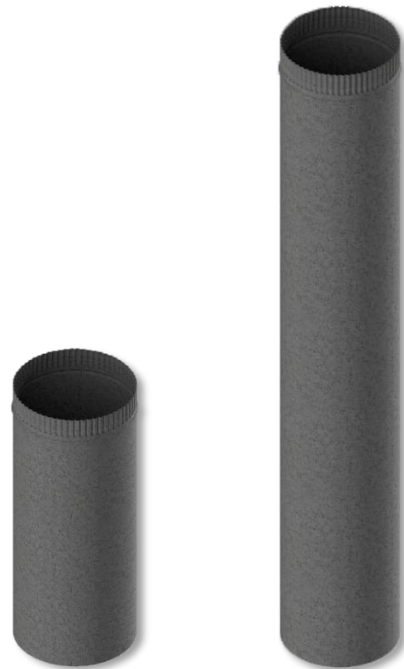


Half Shield

Galvanised Steel Liners

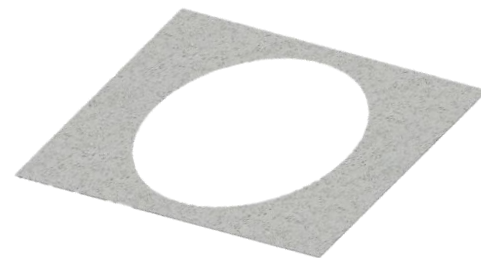
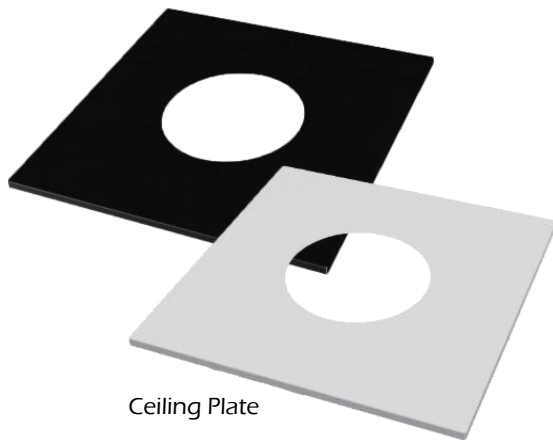
EXS-11007	Galvanised Liner (1200mm)	Ø200
EXS-11008	Galvanised Liner (600mm)	Ø200
EXS-11010	Galvanised Liner (1200mm)	Ø250
EXS-11011	Galvanised Liner (600mm)	Ø250

*Black Galvanised Liners are available through custom orders



Ceiling Plates & Chimney Flashing

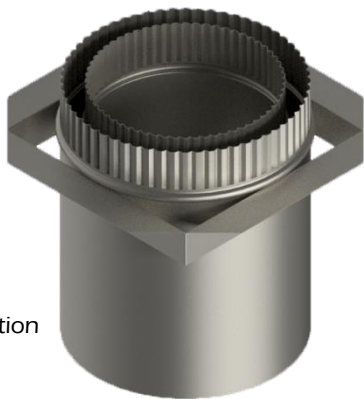
EXS-13003	Ethos Ceiling Plate	380 x 380 (Matt Black or White)
EXS-13005	Ceiling Plate (Ø150 Flue)	380 x 380 (White)
N/A	Custom Ceiling Plate Made to Order	380 x 380 (Matt Black or White)
103-02-1205	Chimney Flashing Plate (300mm x 400mm)	Ø250 (Galvanised)



Chimney Flashing Plate

Floor Penetration Units & Mounting Rails

EXA-10021	Floor Penetration Unit	Ø250 (with Stainless Steel Floor Plate)
EXP-50000	Mounting Rail (Galvanised Steel)	600mm x 40 x 40



Floor Penetration Unit



Mounting Rail

Cowls & Spacer Brackets

EXS-12005	Fixed Cowl (Stainless Steel)	Ø150
EXS-12008	Revolving Cowl (Stainless Steel)	Ø150
EXS-13000	Bottom Spider Bracket (Stainless Steel)	Ø150
EXS-13013	Bottom Spider Bracket (Stainless Steel)	Ø200



Revolving Cowl



Spider Bracket



Fixed Cowl

Kits

Ø150 Free Standing Flue Kit 4.2m (EXA-10020)

Code	Qty	Description
EXS-11032	2	Ø150mm x 1200mm Stainless Steel Black Satin Flue
EXS-11003	1	Ø 150mm x 1200mm Stainless Steel Flue
EXS-11004	1	Ø150mm x 600mm Stainless Steel Flue
EXS-11007	2	Ø200mm x 1200mm Galvanised Liner
EXS-11010	2	Ø250mm 1200mm Galvanised Liner
EXS-11011	1	Ø250mm x 600mm Galvanised Liner
EXP-50000	4	Mounting Rail
EXS-13005	1	Ø150mm Ceiling Plate
EXS-12005	1	Ø150mm Standard Fixed Cowl
EXS-13000	2	Ø150mm Spider Bracket
	1	Installation Instruction Sheet

* 175 & 180 Black Painted Freestanding Kit with or without Half Shield are available to order.



Ø150mm EQC Flue Kit (EXA-10029)

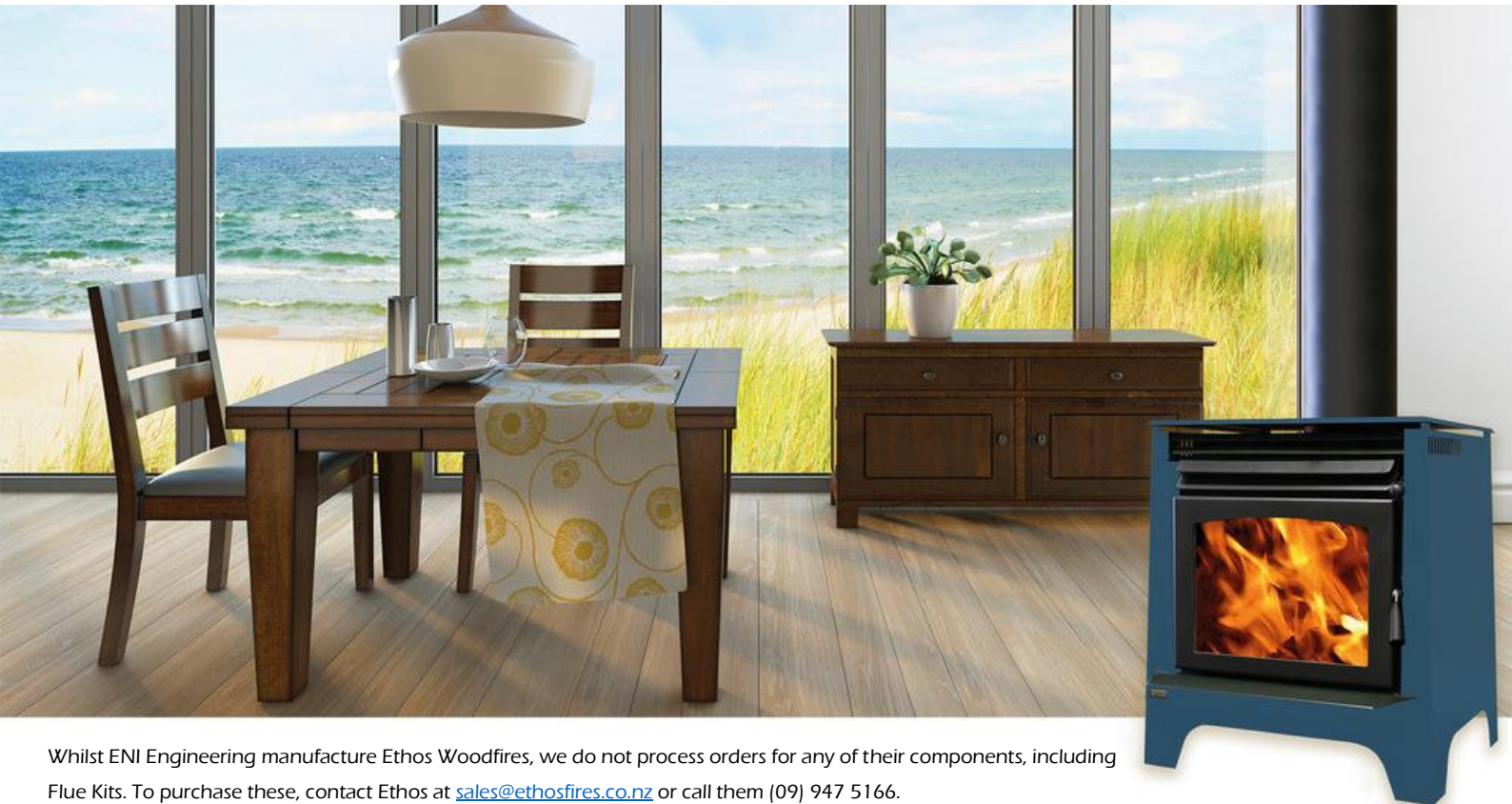
Code	Qty	Description
EXS-11003	4	Ø150mm x 1200mm Stainless Steel Flue
EXS-11004	1	Ø150mm x 600mm Stainless Steel Flue
EXX-11047	1	Ø200mm x 1200mm Galvanised Liner (incl. 6x welded brackets)
EXS-11007	1	Ø200mm x 1200mm Galvanised Liner
EXS-11010	2	Ø250mm x 1200mm Galvanised Liner
EXP-50000	4	Mounting Rail
EXS-13008	1	Ø150mm Stainless Steel Offset
EXS-12005	1	Ø150mm Standard Fixed Cowl
EXS-13000	1	Ø150mm Spider Bracket
EXA-10031	1	EQC Chimney Set (incl. Reg Plate & 4 Adjustable Mounting Angles)



Ethos Woodfires

ENI Engineering has combined with Ethos to manufacture a hotter, cleaner and greener woodfire which meets all the efficiency and emissions requirements of the Ministry for the Environment.

To purchase one of these state of the art woodfires, visit the Ethos Woodfires website, www.ethosfires.co.nz.



Whilst ENI Engineering manufacture Ethos Woodfires, we do not process orders for any of their components, including Flue Kits. To purchase these, contact Ethos at sales@ethosfires.co.nz or call them (09) 947 5166.



03 349 7052
sales@enieng.co.nz
www.enieng.co.nz