

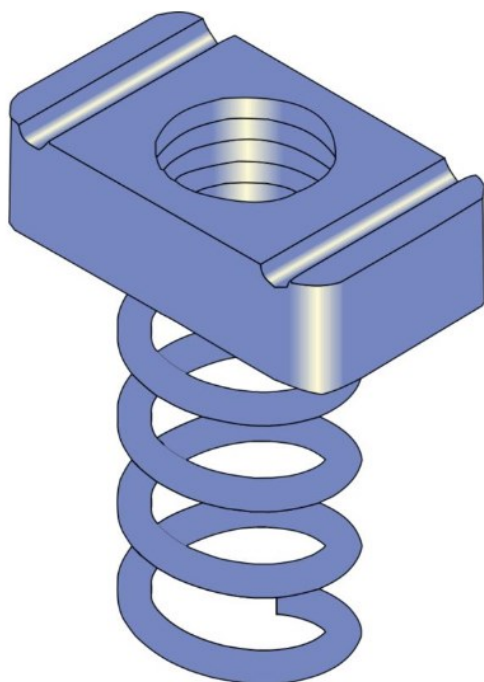
# Spring Nut



**Application:** To attach fittings to the open face of 41mm Channel.

**Finish:** Zinc Plated

**Features:** Nut is moulded with integral spring and seats into channel notches.



PART No.	Rod DIA	Finish
P1006	M6	Zinc
P1007	M8	Zinc
P1008	M10	Zinc
P1008H	M10	Gal
P1010	M12	Zinc
P1010H	M12	Gal
P1012	M16	Zinc
P1012H	M16	Gal