

Saddle—Light Duty



Designed for Fire Protection applications for securing Steel Pipe.

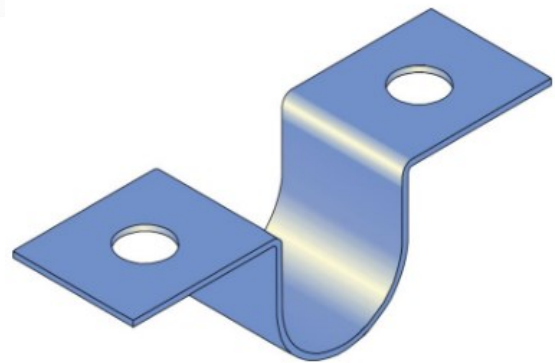
Size Range: 25nb - 65nb

Material: Carbon Steel

Finish: Galvanised

Shallow Saddle

PART No.	Pipe DIA
CLS25	25nb
CLS32	32nb
CLS40	40nb
CLS50	50nb
CLS65	65nb



Deep Saddle

PART No.	Pipe DIA
CDS25	25nb
CDS32	32nb
CDS40	40nb
CDS50	50nb

