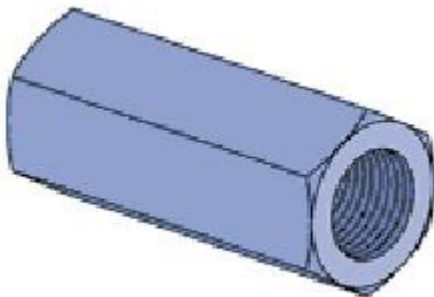


Rod Coupler



Rod Couplers are threaded fasteners used to join two male threads, most commonly threaded rod.

Size Range: M6—M20

Material: Steel

Finish: Available in Zinc and Gal Finish

PART No.	Size	Length (mm)	Finish
RC6	M6	20	Zinc
RC8	M8	20	Zinc
RC10	M10	30	Zinc
RC10G	M10	40	Gal
RC12	M12	40	Zinc
RC12G	M12	40	Gal
RC16	M16	50	Zinc
RC20	M20	50	Zinc
RC20G	M20	50	Gal