



Rest easy- we'll fix it overnight. Enjoy a new workspace the next day.

With our Occupied Workplace Logistics (OWL) program, we'll come in and help revamp your space after the day is done and associates have gone home.

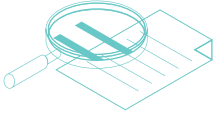
Let us take the hassle out of replacing worn out floors and finishes in a busy work environment. Our team of experts will evaluate your current needs and create a project plan that works for your business. We do this all with minimal disruption to your workplace and associates.

We work with all key manufacturers of commercial flooring. We'll help you figure out what works best for your space, how it can help tell your story and make your associates feel better.

Leave the heavy lifting to us. Our one source solution will replace your floors and paint your walls while keeping your office running with little downtime; the next day, you'll return to a refreshed space.

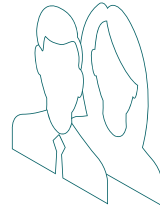
Occupied Workplace Logistics

OWL is our signature system that addresses planning, coordination, communication and installation requirements necessary when renovating an occupied work environment. Along with your facility (or project) manager, Continental Office Floors will oversee the process to update your facility revitalizing your space and maybe your employees.



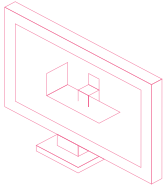
Product selection

Taking into account product selections that meet your facilities needs and support the special installation requirements of an occupied environment.



Planning & communication

We will provide clear communication of the process and how the project will progress.



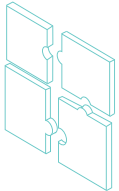
Furniture services

We will consult with you on the best way to handle the furniture in your facility and help you select new, if needed.



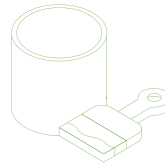
Need a lift?

Furniture lift installation offers a unique method of carpet installation that reduces downtime with less hassles to you and your employees.



Installation

Product selection and the specific requirements of your facility will dictate the process required to install new flooring.



What about the paint?

Do the walls look tired and dingy? As long as you are in your space already, let us put a new coat of paint on them.

We support:



Property Lifecycle

1. Acquisition

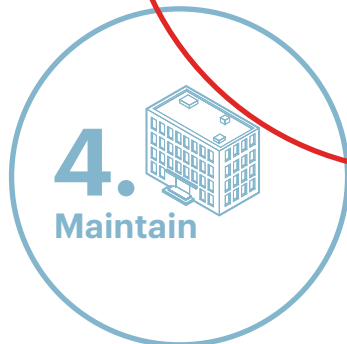
2. Design

3. Build

4. Maintain



Continental Office



Throughout the property's lifecycle, there is a continual need to work with many partners from groundbreaking to move in and other matters for years to come. No matter what stage, we're there to provide support.

