



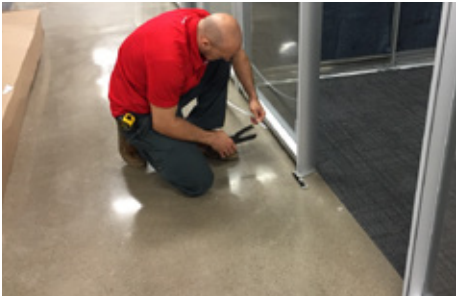
From beginning to end, and anywhere in between

Workplace services maximize your company's investment.

Buying furniture is just the first step. We offer a variety of services to help you throughout your workspace lifecycle and make the most of your investment.

We're creative problem-solvers with a dedicated team of experts who'll help you maximize your asset utilization within your environment. Our knowledgeable onsite and offsite support teams work with all manufacturers.

And, to ensure you get the best possible customer service, we leverage a broad network of providers throughout the US and Canada to find the right solutions to fit your needs.



It's in the journey...

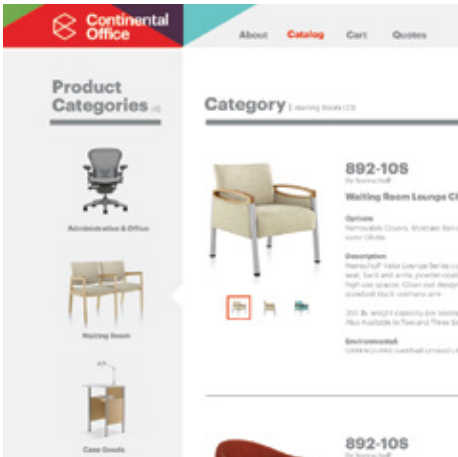
We challenge the status quo and strive to change the way you think about how your clients view work. But, the truth is, it's never a destination.

In fact, we're so deeply invested in your customer experience, we've created proprietary technology-enabled processes that allow you real-time access anytime to find the answers you need when you need them.

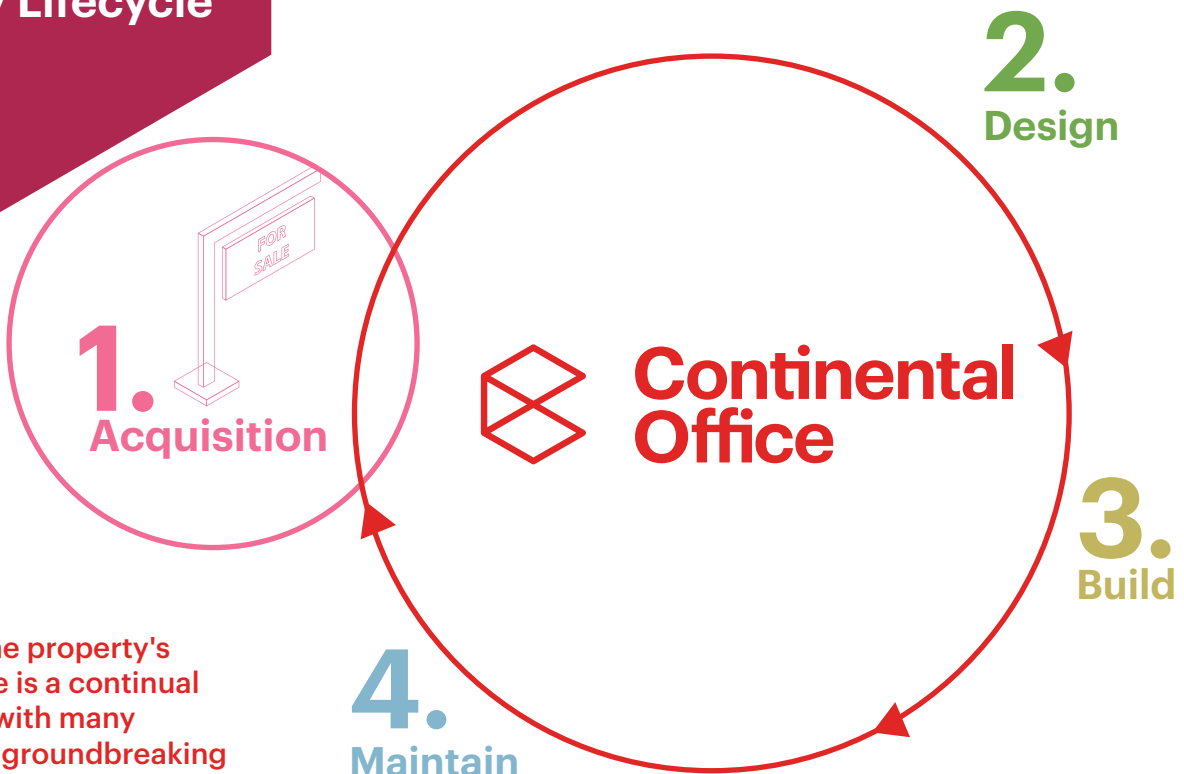
How we do it

With the largest offering of **manufacturer neutral services** in the region, Continental Office can provide workplace services for your facility needs not only in Columbus but also **across the nation**. From executing your daily move, add, change to managing your asset inventory and everything in between, our expertise can lower your costs while improving customer service.

- Asset Inventory Management (AIM)
- Design & Space Planning
- Installation
- Move & Project Management
- Move, Add, Change (MAC)
- Warranty & Repair
- Workplace Audits
- Refurbishment & Rentals
- Buyback, Recycle & Dispose
- Client Service Technologies



Property Lifecycle



Throughout the property's lifecycle, there is a continual need to work with many partners from groundbreaking to move in and other matters for years to come. No matter what stage, we're there to provide support.