



# Modern Workplace from Ideal

Strengthen collaboration, mobility and security with Microsoft 365.



Ideal – experts in platforms

# Work-from-anywhere' expectation

As modern workers, are we unreasonable? In our personal lives we're used to secure group chat applications, we easily create and share content and seamlessly move in real-time between our phone or laptop. We're used to having powerful tools, data and applications at our fingertips. So why shouldn't we expect the same in our work environment?

With over 85% of companies operating a virtual workplace and on average a quarter of employees working remotely (estimated to be 43% by 2023)<sup>1</sup>, it's not surprising that employees are looking for easy, interactive ways to collaborate without borders. Whether we work from an open plan office, shared space or library many of us are increasingly frustrated by the restrictive islands of communication.

With a workforce used to simplicity and mobility in our personal lives (and that's not just the new generation we're referring to here), companies must provide simple collaboration without compromising security – or risk losing out on top talent. The expectation from nearly all modern workers is to work the way they know best – and that seamless, secure connectivity to all devices of choice is increasingly becoming the standard.



Frictionless connectivity to teammates, partners, vendors, and customers in the office or anywhere else is essential.

<sup>1</sup> Reference: Forbes – The Rise of the Truly Virtual Workforce

# IT – the enabler

While today's workplace is a far more fluid, casual environment, the technology that the business relies on, may not be as modern. Many organisations have aging infrastructure that costs too much, is limiting, complex and time-consuming to maintain. Demand from the business continues to grow, threats advance and IT teams are expected to seamlessly scale, yet teams and budgets are stretched.

IT is under pressure to support a whole plethora of devices and deliver a completely reliable service. Simple and effective ways to fully protect the business from advanced threats and evidence compliance are a must. The expectation by users is that services will recover immediately with zero downtime. And for simple, standard requests, users can self-serve without talking to someone on the service desk.

As the modern workplace evolves, so must IT. It shouldn't be unreasonable to expect frictionless, secure connectivity to all devices of choice. IT has an opportunity to enable its workforce to help teams modernise, evolve and adapt at their own pace, but also to manage risk in a smart way.



A great digital workplace connects individuals and teams, drives alignment, and helps people realise their full potential.





# Strengthen collaboration, mobility and security

Fortunately there are ways to harness new workplace trends and deliver IT in a modern way. Modern Workplace from Ideal combines the best of Office 365, Windows 10 and cloud-ready security technologies into a single intelligent platform. Plus, our backup solution ensures your business remains fully protected, even beyond your Microsoft ecosystem.

Now you can accelerate your business with modern workplace solutions or build upon existing Microsoft investments to realise new trends and tools that promote cultures of sharing and real-time collaboration, wherever staff are and on whatever device.

The way we work is changing. With our integrated Microsoft 365 solution, your teams can be more productive, and work better together.

Reach your employees and overcome knowledge silos by embracing collaboration in Teams and Yammer. Safely share co-authored documents between people, projects and locations with secure cloud-based hosting. Increase mobile productivity from any device without jeopardising security and boost innovation with powerful AI tools and proactive analytics.

# Ideal's modern desktop components

**Ideal Proven Expertise** Our experts enable you to seamlessly scale services to meet business growth. We help you deliver a comprehensive digital workplace roadmap that helps teams modernise, evolve and adapt at their own pace and manage risk in a smart way.

## Office 365 Enterprise

Includes both Office 365 ProPlus (always the latest Office apps for your PC and Mac), plus a full suite of online services for email, file storage and collaboration, meetings, and more.

## Windows 10 Enterprise

Provide users in both large and midsize organisations with the most productive and secure version of Windows, and IT professionals with comprehensive deployment, device, and app management.

## Enterprise Mobility + Security (EMS)

Secure heterogenous devices on the move with Microsoft Intune to keep your devices safe. Unlock integrated Advanced Threat Protection to protect your data and your workforce and gain deep insight with Security and Compliance centre.

# The Workplace of the Future

## The top 8 benefits of Modern Workplace from Ideal

We deliver more than a single integrated platform. Our experts help you drive successful adoption and deliver your digital workplace roadmap.



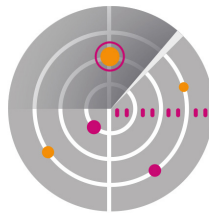
**Work better, together:** Empower your employees to share and collaborate in real-time with the best productivity tools and cloud-based storage wherever they are, on whatever device.



**Get the most from your existing investment:** Examine and build upon existing Microsoft investments to realise new trends and self-service tools that drive solutions to new IT challenges.



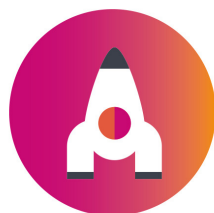
**Simplify IT:** Reduce complexity and increase agility by administering apps, services, data, devices and users—all from a unified, web-based admin centre.



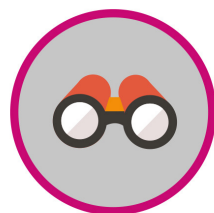
**Intelligent security built-in:** Advanced Threat Protection and endpoint security ensure identity, apps, data and devices are always protected and up to date.



**Drive down cost:** Easy to deploy and manage, you'll be able to realise immediate business benefits via fast adoption and reduced TCO.



**Boost innovation:** Benefit from powerful AI tools to create high-quality content and proactive analytics to generate actionable insights.



**Built-in compliance:** Easily assess your compliance risk, govern and protect your data and efficiently respond to regulatory requirements.

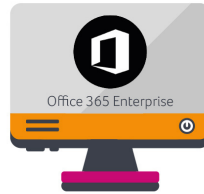


**Proven expertise:** Our experts enable you to seamlessly scale services to meet business growth. We help you deliver a comprehensive digital workplace roadmap that helps teams modernise, evolve and adapt at their own pace and manage risk in a smart way.

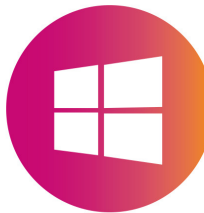
# The best of Office 365, Windows 10 and cloud-ready security technologies

## The 8 reasons why you should choose Modern Workplace from Ideal

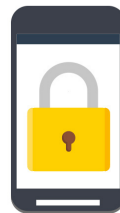
Modern Workplace from Ideal helps you simplify IT with a unified, web-based admin centre. With unprecedented oversight, intelligent security from the ground up; you can keep your sensitive data safe and your business compliant. And you'll be able to realise immediate business benefits with reduced TCO and rapid deployment.



**Office 365 Enterprise:** Includes both Office 365 ProPlus (always the latest Office apps for your PC and Mac), plus a full suite of online services for email, file storage and collaboration, meetings, and more.



**Windows 10 Enterprise:** Provide users in both large and midsize organisations with the most productive and secure version of Windows, and IT professionals with comprehensive deployment, device, and app management.



**Enterprise Mobility + Security (EMS):** Secure heterogeneous devices on the move with Microsoft Intune to keep your devices safe. Unlock integrated Advanced Threat Protection to protect your data and your workforce and gain deep insight with Security and Compliance centre.



**Data Protection:** Robust backups guarantee data availability in Exchange Online, SharePoint Online and OneDrive for Business. Additionally, we protect against accidental distribution with classification and encryption, even outside your organisation.





**Out-of-Box Device Experience:** Windows Autopilot provides a seamless out-of-box experience for your staff, complete with your organisation's customisations and applications.



**Modern Workplace Expertise:** Experienced platform experts plan and design the right solution for your business. With our profile-driven migration approach, we help you implement an integrated and secure configuration to transform your workplace.



**Continuous Adoption:** We help you realise the business value within your organisation with a digital workplace roadmap. Includes ongoing strategic and adoption support managed in quarterly reviews.



**Consolidated Billing:** Receive a single transparent invoice from a trusted supplier. No hidden charges, and no need for a credit card, you can grow and contract licenses in line with your business demands.

# Establish your digital workplace platform

Today, 86% of CEOs consider digital to be their number one priority<sup>2</sup>. It's no wonder: digitally mature companies perform better. Their employees are better engaged, products and services get to market faster and they're more profitable. But how does a typical organisation get from where they are today to where they need to be? How do you shift from the old ways of doing business to creating a digital workplace that empowers people to work at their highest levels and execute on new opportunities quickly and efficiently?

We can show you some simple, effective ways to meet the needs of both IT and the business — and position yourself as a strategic leader within your organisation by beginning with a highly secure and productive Microsoft platform. Get in touch today to book your consultation and discover how our solution:

- Offers greater protection for corporate and personal identity of all users in the organisation.
- Forms the foundation of a digital workplace, through improved productivity.
- Keeps you at the forefront of innovation and develops a platform for rapid adoption of new devices and innovation.

<sup>2</sup> Microsoft – Digital Workplace




# Help your teams work better, together

The modern workplace needs to securely accommodate the expanding distributed or virtual workplace and provide space for easy communication and collaboration – and a way to securely do their best work together.

For 10 years we've been designing, delivering and managing platform solutions for customers around the UK. We provide a full range of data centre solutions from server technology to software and platforms. Our certified, experienced, UK-based team of platform experts can help you build a use case and roadmap that's right for your business, as well as support full rollout across your enterprise.

Let us help you deliver a comprehensive digital workplace roadmap and get the most from your existing investment today.

A circular inset image showing two men in a modern office setting. They are sitting on a red sofa, facing each other across a small white table. One man is pointing at a laptop on the table, and the other is smiling and looking at the screen. They appear to be in a collaborative discussion.

The future of productivity is all about unleashing the potential of your teams. Now you can ensure security, connectivity and optimal performance no matter where they are.



Ideal – experts in platforms

[ideal.co.uk/modern-workplace](https://ideal.co.uk/modern-workplace)

---