

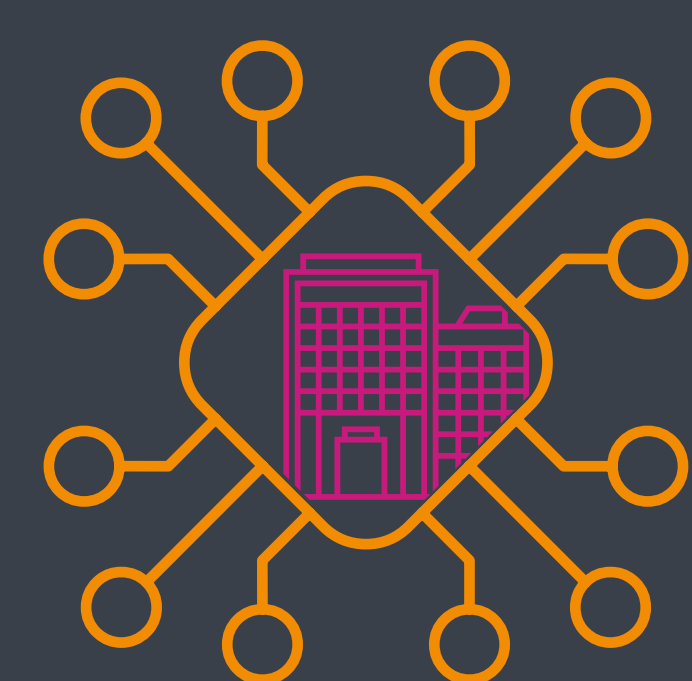
How to **Out-Perform** in a Challenging Construction Environment

As the UK construction sector stabilises after political uncertainty, and there's an uplift in new commercial projects¹; the future is certainly looking bright for contractors and developers. However, there are a number of challenges construction companies need to overcome to deliver game-changing construction for commercial properties:



Embracing digital technologies

from software-defined networks forming the backbone of sites, to robots and connected job sites – there's an incredible array of emerging technologies. But adoption is slow, and many are missing out on innovative approaches to driving down cost and improving project execution.



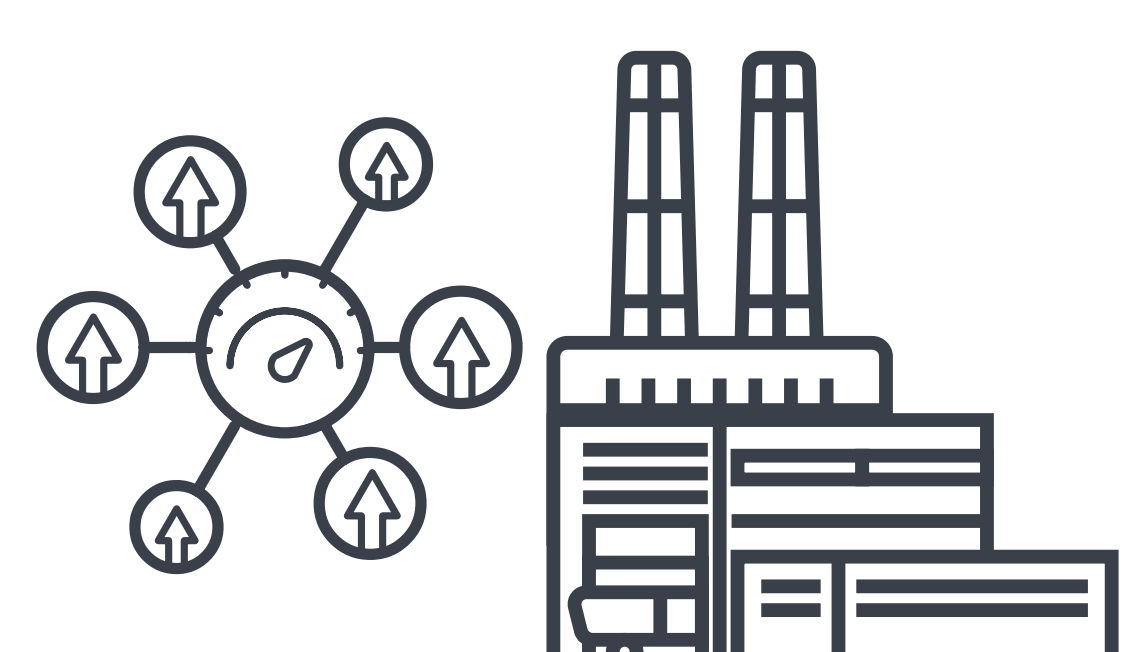
It's predicted that the industry will see more change in the next 10 years than we have seen in our lifetime.⁷
You need a technology partner you can trust.

Here are 5 reasons to choose an expert in construction networks:

1

HIGH PERFORMANCE

Our complex networks form the backbone of some of London's most impressive buildings including Battersea Power Station and 22 Bishopsgate.



2

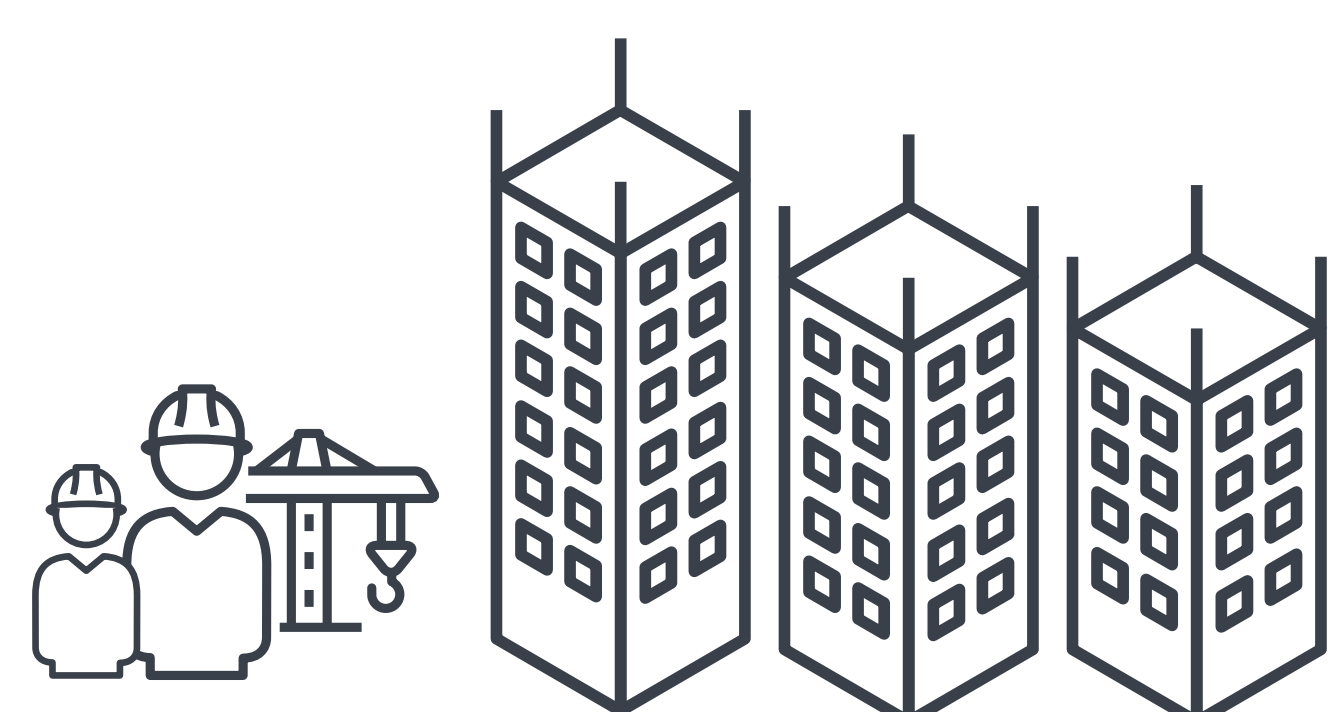
THE INNOVATION

We deliver new levels of security, speed and visibility at the same time as driving commercial value.

3

OUR TEAM

Our dedicated construction experts work consultatively offering expertise from pre-sales to post practical completion.



4

WE ARE COMMITTED

We invest heavily in industry accreditation to ensure we effectively manage complicated construction projects.

5

WE UNDERSTAND

To deliver on time, every time, you need an experienced network partner. One who understands the aggressive critical dates and tight financial constraints you face. You can trust us to get the job done.



With unmatched levels of expertise, we are the proven technology partner to deliver intelligent network infrastructure.

Contact one of our construction experts today.

www.ideal.co.uk/construction-services

CISCO
Partner