



FORREST INDUSTRIAL COATINGS

FORREST FIRMFOOT®

Slip Resistant Epoxy with Grit

Helps to increase traction on wet surfaces.

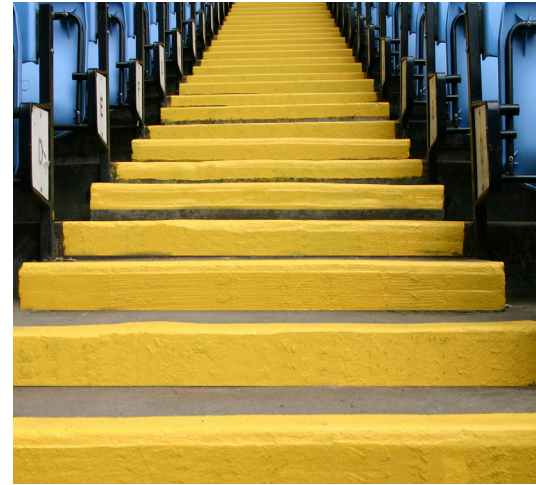
A single component high-performance epoxy with a special grit incorporated for enhanced slip resistance. Ideal for walkways, boats, trucks, trailers, steps, and ramps where a non-skid surface is desired for added safety.

TO LEARN MORE ABOUT HOW FORREST COATINGS CAN SOLVE YOUR COATING CHALLENGES, CONTACT US TODAY. INFO@FORRESTPAINT.COM OR 800-537-7201

Coatings for building safety



It is always recommended the user conduct tests to determine the suitability of the product for the intended use on appropriate substrates.





FIRMFOOT® high-performance epoxies with a special grit incorporated for enhanced slip resistance are ideal for walkways, boats, trucks, trailers, steps, and ramps where a non-skid surface is desired for added safety.

Use cases for FORREST

- Ramps
- Boat Decks
- Steps
- Walkways
- Trucks
- Trailers

Benefits of FORREST

- Single component
- Grit added
- Multiple substrates
- ASTM Tested
- Standard colors



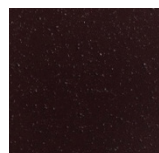
301 RUSSET RED



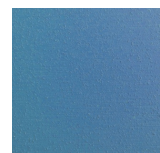
805 BUTTERNUT



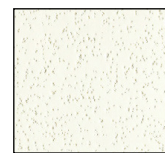
806 CHAMOIS



804 UMBER BROWN



401 BLUE



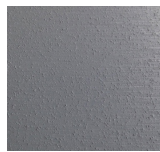
000 CLEAR



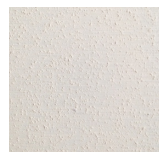
601 SAFETY ORANGE



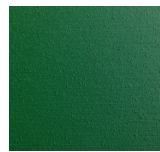
501 SAFETY YELLOW



902 SHIPSTONE GRAY



104 POLAR WHITE



702 SEQUOIA GREEN



201 BLACK

29E SERIES

29E series FIRMFOOT® is an epoxy ester coating with grit, specifically designed for foot traffic on most properly prepared substrates, such as steel, fiberglass, treated aluminum, concrete, and wood.

96M SERIES

96M series FIRMFOOT® is a water reducible and water clean-up epoxy ester coating with grit, specifically designed for foot traffic on most properly prepared substrates, such as steel, fiberglass, treated aluminum, concrete, and wood. Less than 200 g/l VOC's.

1A29E SERIES

1A29E series FIRMFOOT® is an epoxy ester coating with grit, specifically designed for foot traffic on most properly prepared substrates, such as steel, fiberglass, treated aluminum, concrete, and wood. Packaged in aerosol cans for easy application.

It is always recommended the user conduct tests to determine the suitability of the product for the intended use on appropriate substrates.

World Headquarters

1011 McKinley Street
Eugene, Oregon USA

Phone: 800-537-7201

Email: info@forrestpaint.com

FORRESTPAINT.COM

Spokane Service Center

3808 North Sullivan Road
Bldg N-17

Spokane Valley, Washington

Phone: 509-924-3785

Seattle Service Center

1741 South Central Ave
Kent, Washington USA

Phone: 253-854-6372

Portland Service Center

3335 NW St. Helens Rd
Portland, Oregon USA

Phone: 503-228-0207

