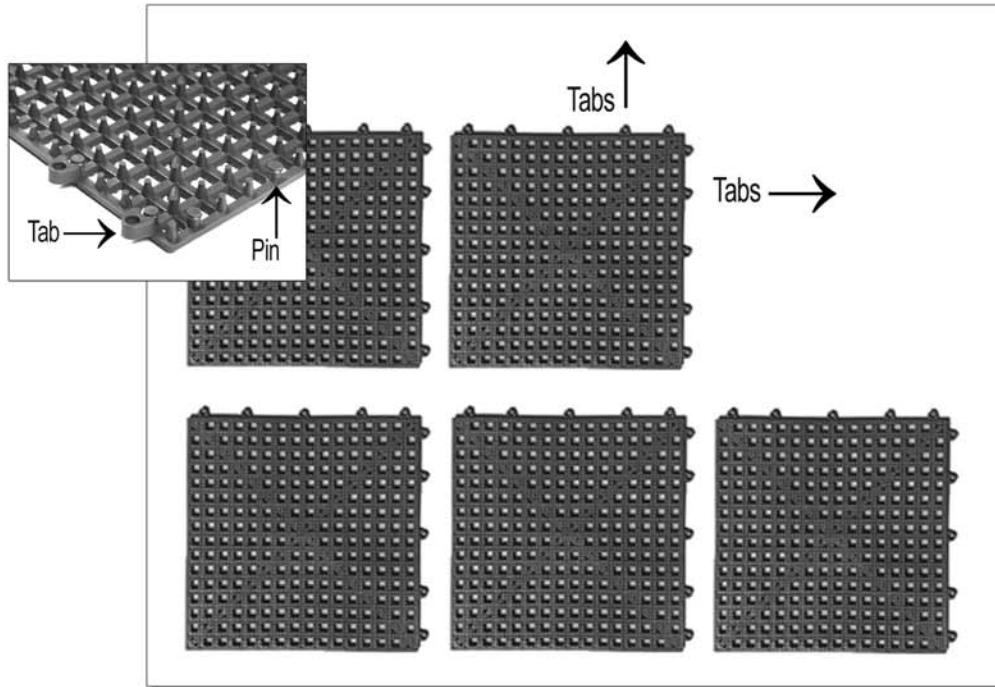


Dri-Dek® It's a Snap to Install.

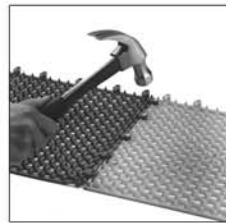


Size up the area you wish to cover. Layout the Dri-Dek Tiles™ in the desired configuration. Point the outer tabs of the Tiles in the same direction. Dri-Dek Sheets™ and Rolls™ will interlock in an identical manner. For large areas, install in independent sections approximately 10' x 10' to allow for ease of cleaning, maintenance and normal expansion and contraction from temperature variations.

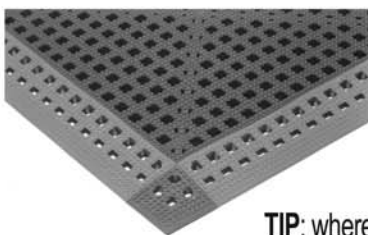
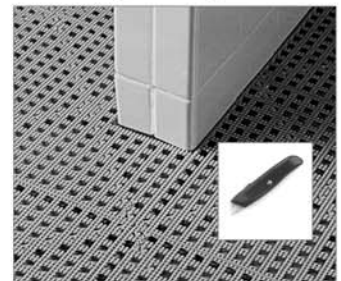


Snap the pins into the tabs along the entire section.

For larger installations, you may use a hammer to tap the pins into the tabs. This can be done from the bottom of the Tile or from the top of the Tile.



Trim for a wall-to-wall fit or around irregular shapes.



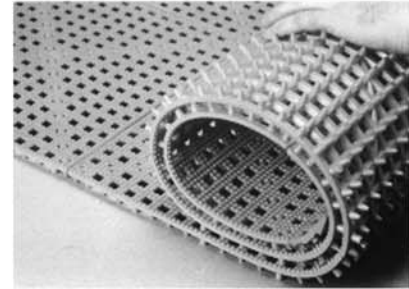
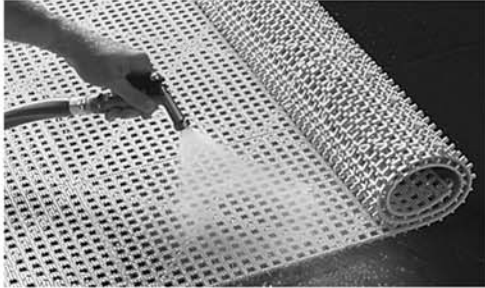
If your surface is not wall-to-wall use the 2" x 12" Edge™ and the 2" x 2" Corner™ to create a beveled border.

TIP: where the Edge tabs meet the Dri-Dek tabs, remove the tabs from the Edge. Where Edge tabs meet Edge tabs, remove one of the tabs so the Edges can be snapped together.

IMPORTANT NOTES: Exercise caution when using a hammer or any sharp edged tools. If the product is used as a flooring and is not wall-to-wall or installed in sufficient quantities, anchor securely by trimming to fit around table legs, walls, or heavy equipment. Or preferably, anchor to the subsurface with screws or bolts. Not recommended for use in small quantities on slippery or polished surfaces. Do not use this product where high-heeled shoes may be worn. Not intended for use as a running surface.

Dri-Dek® Cleaning and Maintenance Tips

To reach drained dirt simply roll back and sweep or rinse away with water.
To clean the surface, hose it off with water or brush with detergent and rinse with water.



For high use areas or in a barefoot environment, use a 2000-3000 psi high pressure washer on both the top surface and the bottom surface to remove any build-up of organic material. Frequency of cleaning is determined by useage. Proper maintenance will increase the performance and useful life of your surface.

Questions? Call 800-847-9341 M-F 8-5 est

- Five Year Warranty -

The manufacturer warrants that for 5 years from the date of purchase this product will be free from defects in material and workmanship. If the product is defective within that period, contact the seller and return it at your expense for replacement. This warranty excludes defects or damage due to improper installation, misuse, abuse, or neglect.

THE FOREGOING WARRANTY IS IN LIEU OF ALL OTHER WARRANTIES, EXPRESS OR IMPLIED, INCLUDING BUT NOT LIMITED TO THE IMPLIED WARRANTIES OF MERCHANTABILITY AND FITNESS FOR A PARTICULAR PURPOSE. IN NO EVENT SHALL KENDALL PRODUCTS OR RELATED PARTIES BE LIABLE FOR SPECIAL, INDIRECT, INCIDENTAL, OR CONSEQUENTIAL DAMAGES, WHETHER IN CONTRACT, TORT, OR NEGLIGENCE.

Kendall Products
2706 Horseshoe Drive South
Naples, Florida 34104