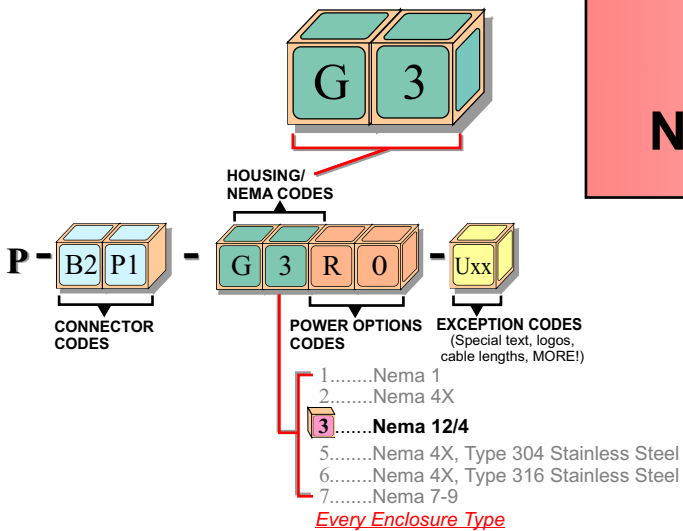


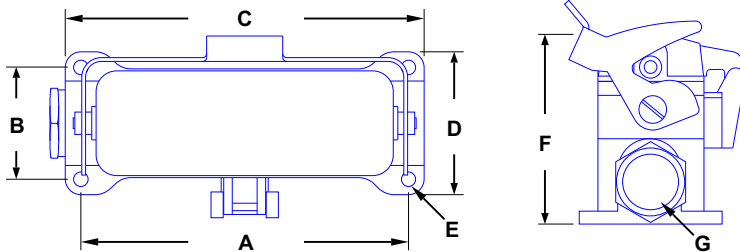
Surface Mount Housing Dimensions Nema Type 12/4 - IP65 Ratings



Mounting & Overall Dimensions (inches [mm])

Housing Code	Weight (oz)	A	B	C	D	E	F	G
A	7.5	2.76 [70]	1.57 [40]	3.2 [82]	2.0 [52]	.22 [5.5]	3.0 [76]	.75 [pg16]
E	10.3	4.12 [105]	1.77 [45]	4.6 [117]	2.2 [57]	.22 [5.5]	3.0 [76]	.75 [pg21]
G	11.9	5.2 [132]	1.77 [45]	5.7 [144]	2.2 [57]	.22 [5.5]	3.0 [76]	.75 [pg21]
L	45.2	4.15 [105]	4.15 [105]	5.6 [141]	4.7 [120]	.25 [6.4]	4.7 [119]	1.0 [pg29]

Drawings available at www.grace-eng.com



⚠️ INSTALLATION

GracePort® installation should be performed by a qualified technician and adhere to applicable regulatory codes. These devices are for mounting on the flat surface of enclosures having the same type environmental ratings.

All installations:

- 1) Drill four (4) mounting holes and secure GracePort® assembly.
- 2) Connect low voltage interface wiring according to documentation provided with unit.

On units configured for optional AC power:

- 1) Connect outlet device as per code. *Note: It is the responsibility of the installer to ensure adequate separation of high and low voltage circuits in the end-use product.*
- 2) Ensure that the metal housing is reliably grounded using grounding means provided.

Check with factory for connector codes that can be pulled through conduit opening

SPECIFICATIONS: ELECTRICAL

Low voltage (data), limited to 30 VDC
High voltage supply (for computer use only)
120 VAC, 15A (UL), 5A (CSA)
230-240 VAC, 16A (CE only)

SPECIFICATIONS: MECHANICAL

Housing: Cast alloy base, plastic cover
Gasket: NBR UL94
Insert Material: Acrylic UL94HB

APPROVALS   RoHS

UL RECOGNIZED: E207344 (Outdoor Use)
CSA: LR110845 (not for interrupting circuit)
CE: EN61010/EN60950 (Foreign Power Outlets)

