

CLEARWATER

2508 CC



Scan me for more info!



Innovative | Serious | Tough

Specifications

Length	25'
Beam	9'6"
Weight	5200 lbs
Draft	21 - 23"
Fuel Capacity	146 gal
Max HP	500
Transom Height	NA / Bracket
Hull Dead Rise	20°
Max Persons	8

Standard Features

Composites: 10-year hull warranty • Coosa composites construction • Full foam flotation • Non-skid deck

Electronics: Deluxe instrumentation panel with water-resistant switches and circuit breakers

Standard Components: 2 automatic bilge pumps • 3 livewells • Anchor locker • Battery compartment • Bolster seat • Bow/stern seating • Clear windscreen • Cockpit courtesy lights • Cockpit freshwater sink • Cockpit washdown pump • Convertible livewell/fishbox • Cushion bolsters • Full inner liner • High-speed baitwell pickup • Large insulated fish box with overboard drain • Lockable walk-in console with enclosed head • Navigation lights • Self-bailing deck • Stainless steel bow/stern eyes • Stainless steel pop-up cleats • Stainless steel rub rail insert • Stainless steel steering wheel • Stainless steel trolling rod holders • Trim tabs • Under gunnel rod holders • Under gunnel rod storage • Wide gunnel on deck

*All standard features and specs are subject to change without notice

NEW Optional Coffin Box



The new coffin box doubles as a lounge seat and fishbox

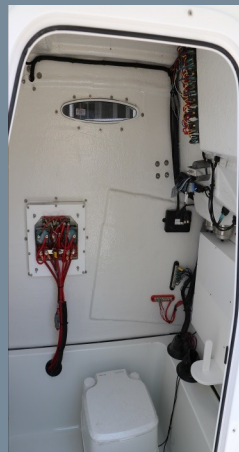
Three Livewells



Three livewells and a floor ice chest for plenty of space

Walk-In Console

Very large walk-in console and walk around deck for easy mobility and storage



Fresh Water Sink



The fresh water sink is located behind the helm for easy accessibility

For more information call us at 1-877-571-7181 or visit our website www.clearwater-boats.com